

Poverty Alleviation Fund (PAF) Program Implementation Status (as of 15 November 2009)

Poverty Alleviation Fund (PAF) is implementing targeted demand-driven community based program. It directly supported third pillar of Tenth Plan/ Poverty Reduction Strategy Paper-PRSP of the Government of Nepal (GoN) and supporting the social inclusion/ targeted program of the Three Year Interim Plan (Annex-I: PAF program at a glance). It aims to improve access to income-generation and infrastructures for groups that had tended to be excluded by reasons of gender, ethnicity and caste, as well as for the poorest groups in communities.

Presently PAF is implementing its program in 59 districts. Initially it selected six districts viz. Darchula, Mugu, Pyuthan, Kapilbastu, Ramechhap and Siraha for programme implementation. From the FY 2062/63 (2005/06 AD), 19 additional districts are selected (*Achham, Baitadi, Bajhang, Bajura, Dadeldhura, Dailekh, Dolpa, Doti, Humla, Jajarkot, Jumla, Kalikot, Mahottari, Rasuwa, Rautahat, Rolpa, Rukum, Sarlahi and Sindhuli*). Further, PAF initiated its program in additional 15 districts from FY 2065/066 (*Okhaldhunga, Bara, Khotang, Salyan, Saptari, Udaypur, Solukhumbu, Sindhupalchowk, Panchthar, Dhading, Taplejung, Parsa, Bardiya, Dhanusha and Terhathum*). With this, PAF now covers, as PAF regular program districts, all the 25 districts from Group-C and 15 districts from Group-B categorized as most deprived districts by CBS/NPC (Central Bureau of Statistics – National Planning Commission) based on 28 poverty related social-economic indicators (**Annex-XVI**). Besides working in these regular program districts, PAF is implementing innovative pocket programme in other 19 districts as well under the special innovative window programme to capture replicable innovative initiatives to reach to the poor. The current PAF program districts are shown in **Annex-II**.

Program Implementation through Community Organizations: Demand-Driven Community Proposal and Direct Funding

Till date 12,061 community organizations of poor (COs) are registered in PAF (4,632 in Initial 6 Districts, 7,644 in Additional 19 Districts and rest 385 are through Innovative Window Programme Districts). Accordingly, community proposals are also prepared with participatory planning process. Out of the total registrations, PAF made agreement with 11,298 COs (4,456 are in Initial 6 Districts, 6,473 in Additional 19 Districts and rest 369 in Innovative Window Programme Districts) and community are implementing the sub-projects (A district wise details on COs registration and agreement are shown in **Annex-V**). Based on community demand, several different activities related to Income Generation and Infrastructure sub-projects are proposed and included in the program implementation. Income generation activities are related to agriculture, livestock, cottage industries, trade and skill based services. Similarly, infrastructure are related to micro-irrigation, link road, culvert/bridge, rope way, electricity/micro-hydro, water mill, water supply, sanitation, school and health post building. Program activities, in general, being implemented by the community are listed in **Annex-III**.

The agreement made with 11,298 COs amounts to NRs. 5,746 M and it is in the process of disbursement to Community Accounts. Till date NRs 4,375 M is disbursed to community non-operating account and NRs 4,329 M is disbursed to community operating account. The community fund flow modality is shown in **Annex-IV** and details on CO agreement and disbursement status is shown in **Annex-V**.

In FY 2061/62 (2004/05), the agreements were made with 595 COs amounting to NRs. 240 M in the FY 2062/63 (2005/06), the agreement was made with 1,070 additional COs amounting to NRs 526M, in FY 2063/64 (2006/07), the agreement is made with 3,311 additional COs amounting to Rs. 1,347 M, in FY 2064/65 (2007/08), the agreement is made with 2,808 additional COs amounting to Rs. 1,491 M, in FY 2065/66 (2008/09), the agreement is made with 2,764 additional COs amounting to Rs. 1,574 M, and in this FY 2066/067 (2009/10), the agreement is made with 750 additional COs amounting to Rs. 570 M.

The community sub projects are in different stages of implementation. Second level of demand and proposals are also started receiving upon completion of first sub projects. Communities also start to build federations, network of COs and co-operatives. Communities have undertaken 11,088 Income Generation related sub-projects and 2,274 Infrastructure related sub-projects till date. A list of completed sub-projects and physical achievement of sub-projects are provided in **Annex-VI**.

The COs and agreement with COs consist of innovative pocket program in 10 additional districts. Details on innovative program is provided in **Annex-VII**.

Additionally, PAF considered financing 12 out of 20 winning innovative proposals of Nepal Development Market Place (NDM) -World Bank 2005. Agreements were made with those 12 POs that amounts NRs. 16 M to work in 25 VDC (Village Development Committee) of *Bajura, Dolakha, Kathmandu, Myagdi, Parsa, Saptari, and Syangja* districts serving about 8,999 poor households (**Annex-VII**). Till date, **NRs. 14.30 M** is disbursed. Further PAF monitored the World Bank financed remaining 8 NDM projects in Dang, Khotang and Tanahun districts.

Recently, PAF considered financing 25 winning innovative proposals of Nepal Development Market Place (NDM)-World Bank 2008. Agreements are made with those 25 POs (Partner Organizations) that amounts NRs. 34 M to work in 52 VDC of *Chitawan, Dhading, Dhanusa, Dolakha, Jhapa, Kalikot, Kanchanpur, Kathmandu, Kavrepalanchok, Khotang, Lalitpur, Morang, Mugu, Panchthar, Parbat, Sankhuwasabha, Sarlahi and Solukhumbhu* districts serving about 5,228 poor households (**Annex-VII**). Till date, **NRs. 25.42 M** is disbursed and implementation is in different stages.

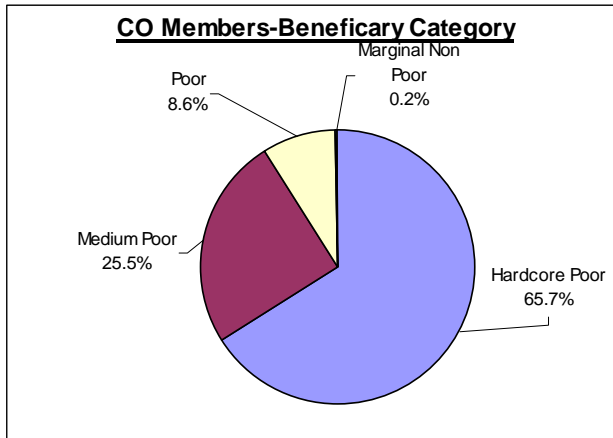
Facilitation and Community Support through Partner Organizations

Partner Organizations (POs) selected by PAF are facilitating Community Organisations of Poor (COs). The facilitation being carried out by POs are in organising COs, their capacity development, planning activities, carryout detailed feasibility, survey design & estimates, and proposal preparation during preparatory phase, and provide technical assistance and monitoring feedback support during implementation phase. As such, 242 Partner Organizations (POs) are working with communities (66 for Initial 6 Districts, 128 for Additional 19 Districts, 11 for Innovative Window program and 37 for Innovative NDM-World Bank Programme). Recently 169 POs are selected to facilitate in 15 new district (131 POs) and 6 old districts (38 additional POs). 13 POs are terminated due to their poor performance.

Till date POs facilitated in total 1023 VDCs (315 in Initial 6 Districts, 571 in Additional 19-Districts, 60 in Innovative Window Programme Districts and 77 in NDM-World Bank Programmes) and Community Organizations of Poor (COs) are working in those VDCs. Till date 431,979 households (HHs) are served (161,104 HHs in Initial 6 Districts, 256,332 HHs in Additional 19 Districts, and 14,543 in Innovative Window Program Districts). Additionally

14,227 HH are also benefitted through NDM-World Bank Programme. A detailed district wise PO, COs and coverage are shown in [Annex-VIII](#).

Reaching out to Excluded Poor Community Beneficiaries and Social Inclusion

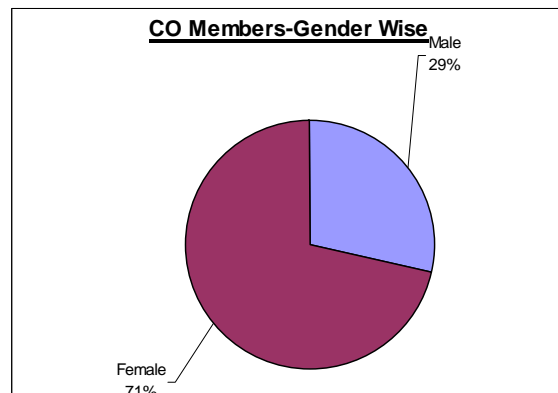
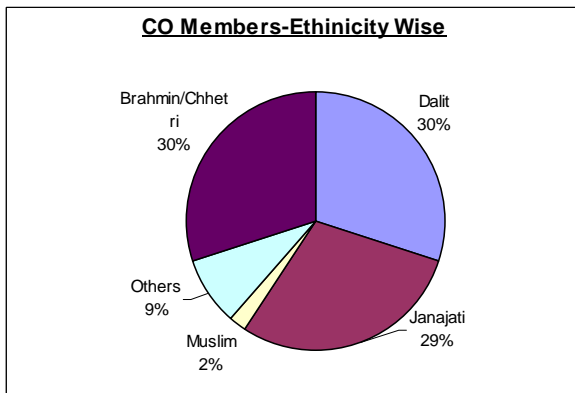


PAF has taken the strategy to support the idea that poor community should be organized themselves to prepare, implement and manage their program and they should be in the driving seat, with decision making authorities. A social inclusion strategy to reach out to the poor specifically poor women, dalit and janjati are taken ([Annex-IX](#)).

Participatory social assessment and community well-being ranking process identified the poor community members as primary beneficiaries at the settlement

level. In an average about 57% of the settlement households are identified as poor households. They are organized into community organization to plan, implement and manage the sub-projects. In total PAF covered 323,455 poor HHs as CO member beneficiary. Among beneficiaries members in Community Organizations of Poor (COs), 65.7% members falls under hardcore poor category (food sufficiency less than 3 months among criteria fix by community), 25.5% members falls under medium poor category (food sufficiency more than 3 months but less than 6 months among criteria set by the community), 8.6% members falls under poor category (food sufficiency more than 6 months but less than a year among criteria set by the community) and 0.2% members falls under marginal Non-poor Category.

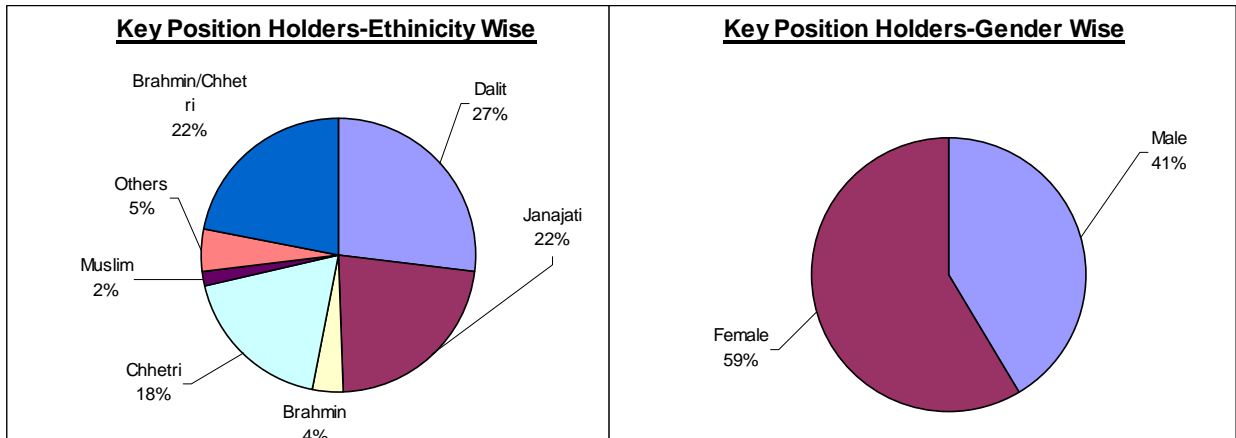
Likewise, CO member households constitutes 30% dalit, 29% janajati, 2% Muslim, 30%



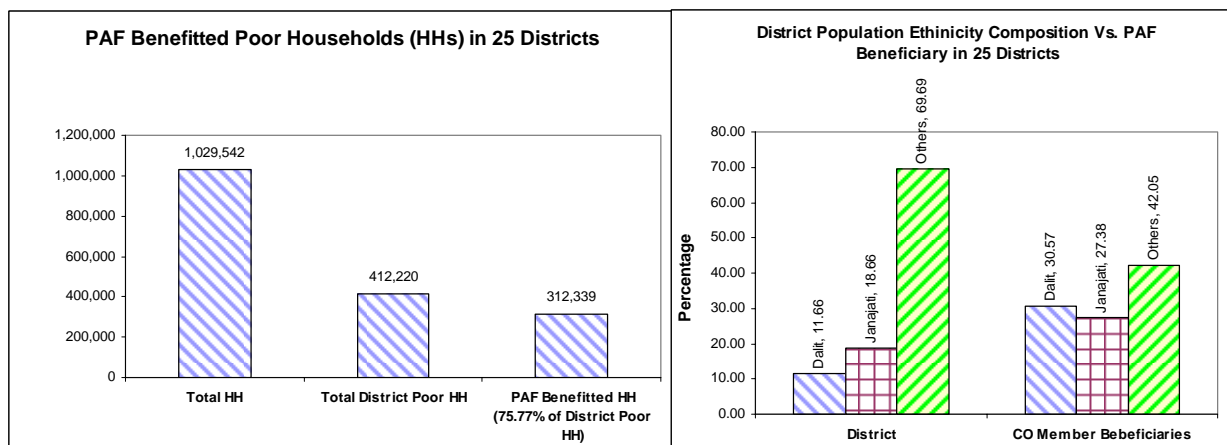
Brahmin/Chhetri and 9% Other ethnicity.

Gender wise, 71% are female members in Community Organizations (COs).

Similarly, the key position holders in the community organisation such as President, Treasurer, Secretary constitutes, 27% Dalit, 22% Janajati, and 2% Muslim and 22% Brahman/Chettri, and 5% other ethnicity. Gender wise, 59% are female key position holders in Community Organizations of Poor (COs).



When percentage beneficiary of PAF by ethnicity is compared with district percentage ethnicity composition as shown in the graph below it is clear that PAF is focusing on socially excluded group such as Dalit and Janajati. In an overall, PAF till now benefited 75% of poor households in 25 districts (312,339 Poor HHs out of 412,220 poor HHs in 25 districts). PAF is working in 70% of VDCs in 25 regular PAF districts (886 VDCs out of 1275).



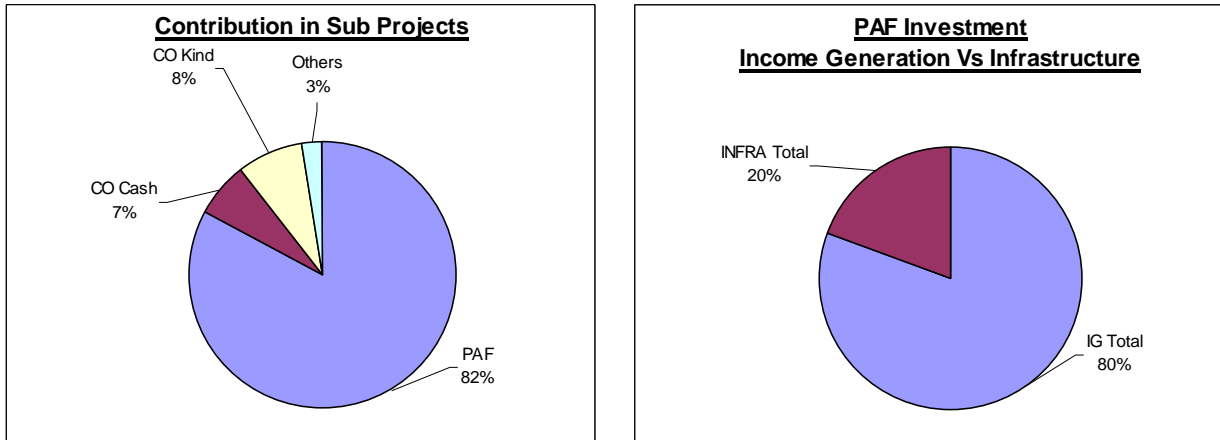
All five districts of the Karnali zone are covered by the program. Till date program reached 113 VDCs i.e. 84% of 134 VDCs in Karnali and benefited 41,191 poor households (Annex-X).

Program covered five districts in Tarai (Siraha, Mahottari, Sarlahi, Rautahat, Kapilbastu) and benefited 92,149 HHs covering 219 VDCs (i.e. 19% of poor HHs and 48% of VDCs). Out of 63 border VDCs in those five districts, PAF program covered 23 VDCs (i.e. 37%) and benefited 8,720 HHs (i.e. 17% of poor HHs in border VDCs) (Annex-XI). Further, innovative pocket program is running in Morang, Kanchanpur and Chitwan districts. It reached additional 6,049 poor households in 17 VDCs in those districts.

Program Cost Sharing

PAF is investing 82% (i.e. Rs. 5,745 M) of the total sub-project cost. Community sharing is 15% (7% in Cash— i.e. Rs. 468 M and 8% in Kind—i.e. Rs. 547 M) of the total sub-project costs whereas other organizations mainly VDC/DDC (Village Development Committee/ District Development Committee) are sharing 3% (i.e. Rs. 175 M) in total sub-project cost. In Income

Generating sub projects, community is sharing 9% in cash (Rs. 453 M) and 3% in kind (Rs. 166 M) whereas in Infrastructure sub projects, it is 1% in cash (Rs. 14 M) and 23% in kind (Rs. 380 M).



Out of the total PAF investment, 80% is in Income Generating sub-projects and 20% is in Infrastructure sub-projects. About 89% of the PAF investment in Income Generating Sub-projects are established at Revolving Fund at community level being managed by COs. The sub-project activities undertaken are shown in [Annex-III](#).

Collaboration in sub-project Implementation

The collaborative efforts are going on to supplement and complement with different programs running in the district to bring discernible impact in considerably less time. There are several examples of collaboration with line agencies, local governments and donor agencies to implement the program and sub-projects in the communities at district level. Some of the collaboration efforts at district are shown in the table provided in [Annex-XII](#).

Several MoU (Memorandum of Understanding) has also been signed with different organizations at central level to facilitate different task as well as to facilitate collaboration in implementation of sub-projects at community level.

- MoU with Rastriya Banijya Bank (RBB), as a PAF development partner, is renewed and made recently similar agreement with Nepal Bank Limited (NBL) that includes 5 districts (Dolpa, Jajarkot, Rasuwa, Rolpa and Rukum) where RBB branch does not exist and provide alternate in other districts for enabling efficient fund flow to the accounts of community organizations of the poor.
- MoU is signed between South Asia Foundation, CTEVT, Jiri Technical School and Himalyan Health and Education, Solukhumbu in order to utilize Madanjeet Singh Scholarship for ANM (Auxillary Nurse Midwife) in PAF districts
- MoU is signed with Alternate Energy Promotion Centre (AEPC) on August 10, 2007 for mutual collaboration in PAF and AEPC program area to enable poor access to micro-hydro and other alternative energy projects
- MoU is signed with WINROCK on October 27, 2007 for the implementation of ICT GDA project in Bajhang and Achham districts.

- MoU is signed with ROTARY Club and Kavre Health Training Institute for utilizing ROTARY ANM Scholarship and follow-up support program in PAF districts.
- MoU is signed with Winrock International's (WI) Renewable Energy Project Support Office (REPSO) Nepal on April 21, 2008 to promote Jatropha oil based pump irrigation systems for improving income generation of poor farmers through increased agricultural productivity in Siraha district.
- MoU is signed between Department of National Parks and Wildlife Conservation (DNPWC) and PAF on May 2, 2008 in order to collaborate and enable to implement PAF program in protected areas.
- MoU is signed with Winrock International's (WI) for the rural ICT activity in Marku VDC of Achham District through Shanti Secondary School

An understanding was signed by PAF in a meeting at Ministry of Finance with Ministry of Local Development (MLD) to further enhance co-ordination with Local Bodies at district on April 1, 2008.

Further PAF is taking initiative to collaborate with Ministry of Education and Centre for Non-Formal Education; Department of Livestock and Department of Agriculture under the Ministry of Agriculture and Co-operatives. Similarly effort is going on to collaborate with Department of Irrigation; Leasehold Forestry and Livestock Programme-Department of Forest; Western Upland Poverty Alleviation Program (WUPAP), World Food Program (WFP); and USAID project Education for Income Generation.

Community Institutional Development

Community institutionalization process is also emerging in some of the pilot districts where community felt need to federate themselves for certain function. Multi-purpose co-operatives, co-operatives for single function and federation of COs are formed as per communities' felt need. Informal networks of COs are being formed in each VDC, in the process of institutionalization. The table in **Annex XIII** shows institutions formed and objectives of those institutions.

Outcomes

The recent study¹ finding shows that the Household (HH) consumption in PAF program area is increased by 23%. Improvement in consumption among beneficiaries of PAF program area is higher by 45% compared with non-participants (control district).

Households (HHs) with food sufficiency of less than 3 months and 4 to 6 months are decreased by 3.2% and 1.6% respectively, whereas HHs with food sufficiency 7 to 9 months and 10-12 months are increased by 1.3% and 3.5%.

Similarly, HH income in PAF Program Area is increased by 18%. The HH expenditure in Child Education has been increased by 54%. Under five child mortality is decreased by 58%.

¹ Central Department of Population Studies at Tribhuvan University (TU) carries out baseline survey (2006) and follow-on survey (2008/9) on a sample of about approximately 2000 households in about 150 villages (also the primary sampling units, PSU) from nine districts located across different geographic regions of the country.

The study also shows that discrimination faced by HH members are decreased by 7%, and discrimination faced by community members decreased by 15%. The women participation in social/development organization is increased by 45%.

A summary table with some of the key findings of follow-on impact survey are provided in [Annex-XIV](#). The WB evaluation based on same study data indicates that on an average, the net impact of PAF was about 7 percent point in the growth rate of per capita consumption.

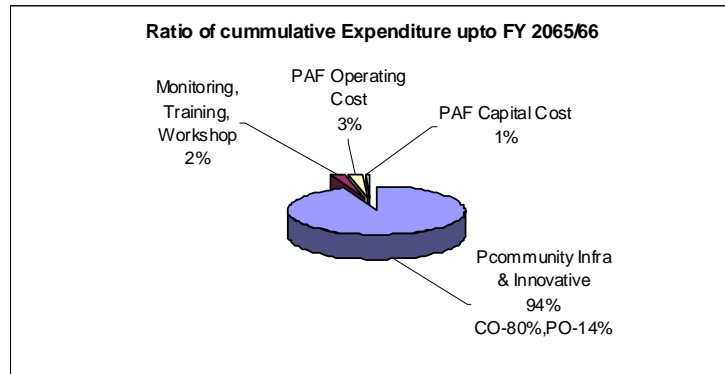
Budget Expenditure

The total expenditure in FY 060/61 (2003-04), FY 2061/62 (2004-05), FY 2062/63 (2005-06), FY 2063/64 (2006-07), FY 2064/65 (2007-08) and FY 2065/66 (2008-09) were NRs.5.78M, NRs. 247.32 M, NRs. 493.50 M, NRs 1,210.30 M, NRs. 1,875.48 M and 1,647.20 M respectively.

In FY- 2065/66 (2008/09), total PAF expenditure of NRs. 1,647.20 M which is 58.64% of allocated budget as compared to FY - 2064/65 (2007/08), where total expenditure is NRs 1,875,485,349 which is 95.17 % of the allocated budget.

Total expenditure of PAF till FY 2065/66 is NRs. 5,479,598,820.

Out of the total PAF expenditure of NRs. 5,480 M till FY 2065/66 (2009-09), 93.96% was in Program Implementation through CO & PO(CO-80% & PO-14%), 2.31% in Monitoring, Training, Studies and Other Program Support, 0.84 % in capital investment for PAF and 2.90% in PAF operation/ recurrent cost.



Out of the total expenditure, 96.96 % is from IDA (International Development Agency- the World Bank) grant, 2.35% is from IFAD (International Fund for Agriculture Development) grant and the rest 0.69 % from GoN (government of Nepal) source.

In this FY 2066/67 (2009-10), the expenditure till date is **NRs 368,958,083**. The details on Program Funding Status is shown in [Annex-XV](#). Currently the PAF Project II is funded by IDA Grant with US\$ 100 M and IFAD Grant of US\$ 4 M for four years till January 2012. IDA disbursement to this PAF project till date is **32.8 %** i.e. equivalent to about **US\$ 32.8M**.

IDA grant for PAF Project I of US\$ 40 M (Initial US\$ 15 M and Additional US\$ 25 M) has been made utilised by January 2009.

Lessons and Challenges

There is a high demand for the programme as the sub-projects originate at grass-root levels. Communities have demonstrated their keen interest to undertake the programme and make necessary contributions. The current challenge is to make a trade-off between rapid implementation and institution building enhancing the technical capability of the community organizations. In view of the wide varieties of activities undertaken within the sub-project, the challenges faced for sustainability of the sub-projects are:

- Linkage with market for sustaining income-generating activities.
- Providing appropriate technology support for different activities including linkages with existing service structure
- Availing Insurance Safety-Net particularly for livestock
- Exploring an alternative to livestock based activities for landless poor
- Building Community Capacity to Manage Revolving Fund and Operate the Sub-Projects
- Raise awareness of community through functional literacy

While working towards above challenges, it is inevitable to work with diversified groups of poor communities supporting each other and network for linkages and collaboration with other programmes and line agencies to support communities in different areas of strength of these programmes. Further, legal institutionalization of Community Organizations through coalition or formation of functional co-operatives and establishment of strong linkages with VDC/ DDC are also important for sustainability and long-term support to these community groups.

PAF is working with its exit strategy focusing on its strategic thrust to enable community to go to sustained path to get out of poverty within a stipulated 5-6 years of time.

Monitoring, Research and Development needs to be strengthened further to support the implementation including capacity building of main actors i.e. CO, PO, Local Bodies and PAF.

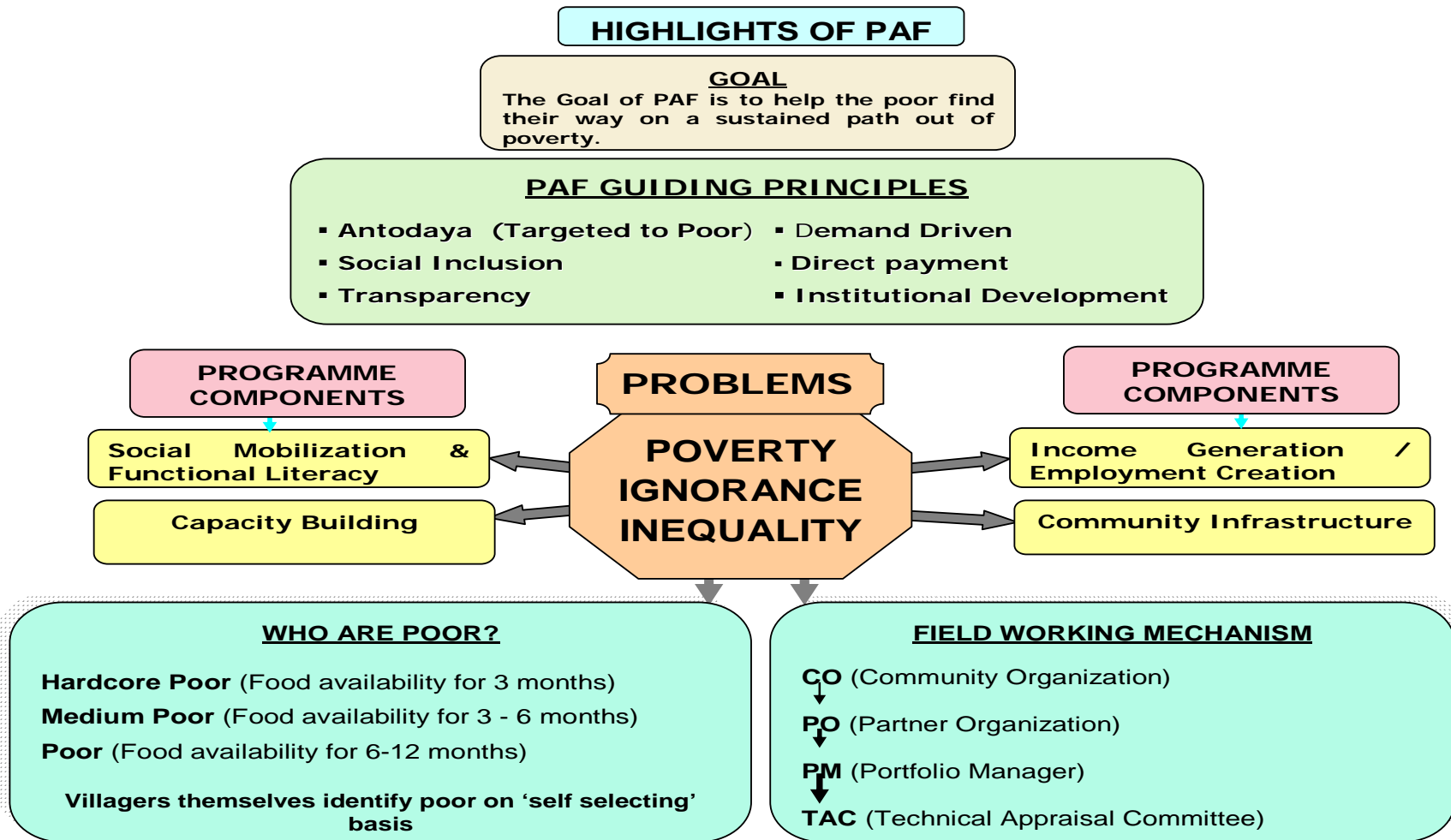
Based on lessons learned, PAF will take following strategies:

- Expansion of PAF program in new VDCs and districts
- Institutionalization of Community Organizations as co-operative or other forms of institution as per their decision and link with financial institution and markets where program is already in implementation
- Capacity Building of community organization, partner organization and PAF
- Co-ordination and collaboration with other agencies to bring discernible impact in considerably less time
- Strengthen monitoring evaluation based feedback and learnings
- Advocacy of PAF in order to spread its knowledge and working modalities

Future Program District Coverage Plan

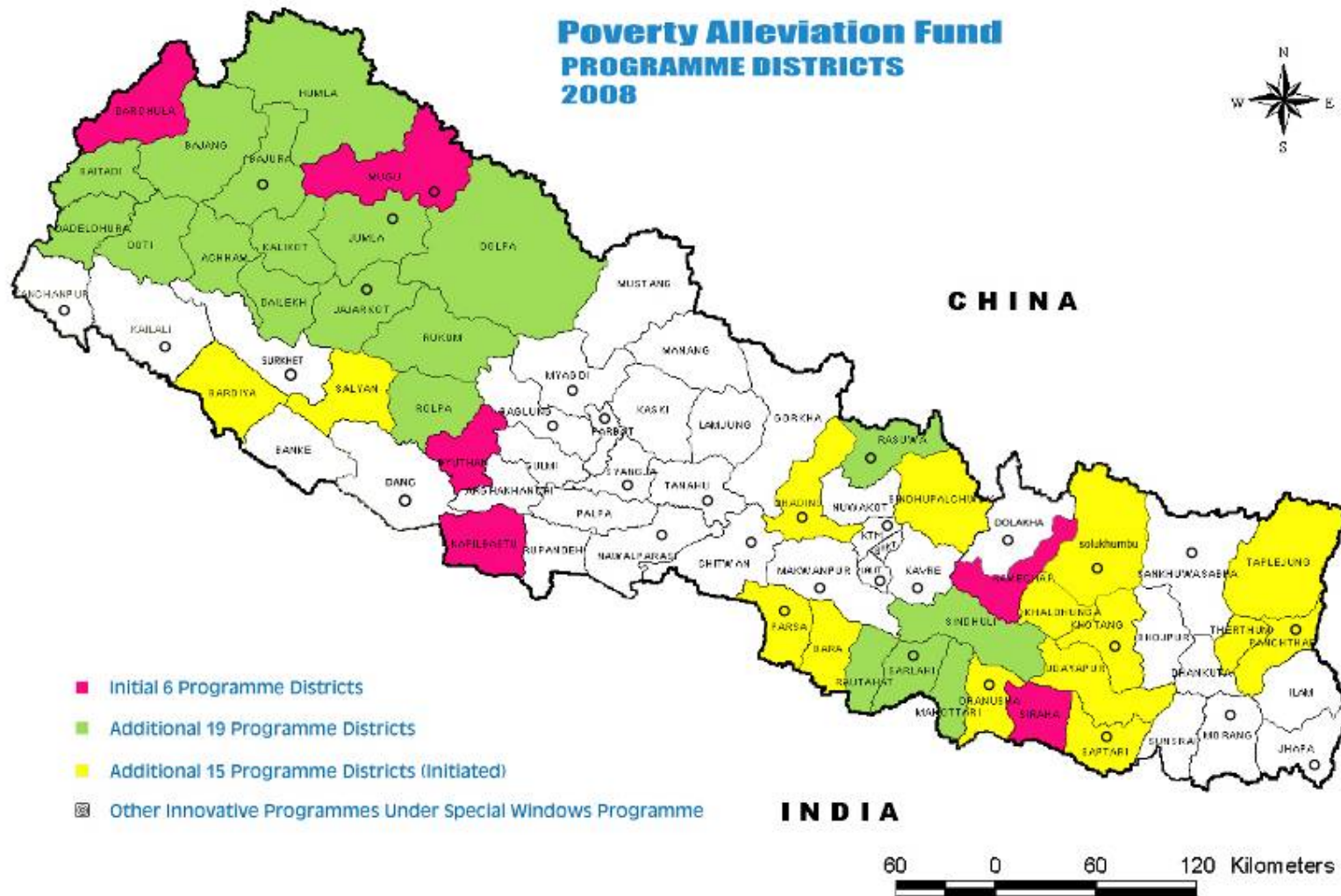
PAF has planned to cover all 75 districts in future. Program expansion in additional 15 districts is initiated in the Fiscal Year 2065/66 (2008/09) and Partner Organizations (POs) are identified in FY 2066/67. Program will be expanded in additional 15 districts in FY 2066/67 (2009/10) from the list of deprived districts categorized by CBS/NPC based on 28 poverty related socio-economic indicators (**Annex-XVI**). Remaining 20 districts will be covered through poverty pocket approach. The phasewise PAF program district coverage plan are shown in the map in **Annex-XVII**.

Annex I: PAF Program at a Glance



Poverty Alleviation Fund is created by the Government of Nepal under separate PAF Act as an autonomous institution to implement targeted program

ANNEX-II: PAF Programme Districts



Annex III: Sub Project Activities

INCOME GENERATION

Agriculture

- Agro Forestry
- Apple Farming
- Asparagus Farming
- Badam Farming
- Banana Farming
- Bee Keeping
- Cardamom Farming
- Cereal Crops Farming
- Dhaki Okhal
- Fishery
- Fruits Farming
- Ginger Farming
- Green House
- Herbal Nursery
- Herbs Farming
- Land Management
- Lokta Farming
- Maize Cultivation
- Mushroom Farming
- Nursery
- Off Season Veg Farming
- Orange Farming
- Power Treller (Tractor)
- Rice Farming
- Spray Machine
- Sugarcane
- Taar Bar
- Tree Contract
- Vegetable Farming

Livestock

- Animal Insurance
- Badel Raising
- Buffalo Raising
- Buffalo Shade
- Chicken Cage Construction
- Cow Raising
- Cow Shade
- Dairy Firm
- Donkey Raising
- Duck Raising
- Duck, Pigeon, Chicken Shade
- Fodder Management
- Goat Raising
- Goat Shade
- He Buffalo Raising
- Horse Raising
- Mule Raising
- Ox Raising
- Pari Raising
- Pasture Land Support
- Pig Raising
- Pig Shade
- Pigeon Keeping
- Pigeon Raising
- Poultry
- Rabbit Keeping
- Sheep Raising
- Veterinary Equipment
- Yak Raising

Manufacturing

- Agri Tools
- Bag Making
- Bread Udyog
- Candle Udhoyog
- Carpet
- Chiura Udyog
- Clay Utensils
- Cloth Udhoyog
- Dalmoth Udhoyag
- Dhaka Weaving
- Doko Namlo Rope
- Essence Making
- Farma
- Fertilizer Production
- Fiber Material Making
- Fruit Purify Centre
- Furniture/Carpentry
- Garment
- Ice Cream, Kulfi, Chaat
- Juice Production
- Madal
- Masala Udyog
- Metal Products Production
- Micro Enterprise/Cottage Industry
- Misc. IG
- Muda Making
- Nanglo Making
- Nepali Paper Udhoyog
- Noodles Making
- Pickle Udhoyog
- Potato Chips Making
- Pottery (Manufacture)
- Radipakhi Weaving
- Rope Making
- Shoe Making
- Soap Industry
- Stamp Making Shop
- Sweater Udyog
- Tapari
- Thanka
- Tile Making Industry
- Titaura
- Umbrella Udyog

Service

- Agrovet
- Auto Rickshaw
- Band Baaja
- Beauty Parlour/Saloon Service
- Bus/Truck Maintenance
- Cart Service
- Communication/PCO Service
- Computer Maintenance Centre
- Cycle Maintenance
- Dhalan Pharma
- Editing Classroom
- Goods Transportation
- Hotel
- House Wiring
- Improved Aran
- Laundry
- Lohari Giri
- Loud Speaker
- Masson Instruments

- Mechanical Workshop
- Mill (Kutani Pisani)
- Motorcycle Maintenance
- Painting
- Photo Studio
- Plumber Instruments
- Radio TV Maintenance
- Restaurant
- Rickshaw
- Rickshaw Maintenance
- Screen Print
- Sewing Machine
- Sheltering Business
- Solar Repairing & Maintenance Shop
- Tailoring
- Tea Shop
- Tent House
- Thela Gada
- Transportation Service
- Tripal
- Vehicle Maintenance
- Washing Machine
- Welding Shop

Trading

- Aggregate Business
- Agricultural Input Business
- Animal Business
- Bamboo Business
- Bhujjiya Shop
- Book Shop
- Chuna Business
- Cloth Business
- Cooperative Shop
- Dry Fish Business
- Egg Business
- Electric Shop
- Fancy Shop
- Fish Business
- Fruits And Vegetable Shop
- Fruits Shop
- Galla Business
- General Stores
- Gold & Silver Shop
- Herbs Business
- Jewellery Shop
- Kawadi Business
- Kerosene Shop
- Leather Business
- Manihara Business
- Meat Shop
- Medicine Shop
- Metal Business
- Milk Business
- Mobile Retail Shop
- Paan Shop
- Plastic Shop
- Pottery Shop
- Purse, Belt Shop
- Retail Business
- Rice Business
- Seeds Business
- Shoe Shop
- Stationary Shop
- Sweet Shop
- Thela Business
- Tobacco Business
- Utensil Shop
- Vegetable Shop
- Veterinary Shop
- Watch Shop
- Wood Business

COMMUNITY INFRASTRUCTURE

- Bio Diesel Expeller Machine
- Boring Pump
- Building
- Canal
- Dhikki Pump
- Ghatta
- Irrigation
- Irrigation Rehabilitation
- Milk Chilling Centre
- Plastic Pond
- Pond
- Pond Maintenance
- Pump Set/Motor
- Rice Mill
- Road
- Road Maintenance
- Solar System
- Water Pump
- Water Supply and Sanitation

CAPACITY BUILDING

- Aamchi Training
- Account And Store Mgt Training
- Account Keeping Training
- Agro Forestry Training
- Agrovet Training
- Animal And Market Dev Training
- Animal Health Training
- Animal Husbandry Training
- Animal Insurance Training
- Animal Raising Training
- Asparagus Management Training
- Asparagus Marketing Training
- Awareness Training
- Banana Farming Training
- Beauty Parlour Training
- Bee Keeping Training
- Buffalo Raising Training
- Candle Making Training
- Capacity Building Training
- Cardmom Farming Training
- Carpentry Training
- Carpet Making Training
- Cemented Ring Making Training
- Child Development Programme
- Child Literacy Class
- CO Management Training
- Communication Training
- Community Awareness Training
- Compost Fertilizer Management Training
- Computer Maintenance Training
- Computer Operator Training
- Cottage Industry Training
- Cow Raising Training
- Cycle Maintenance Training
- Dairy Technician Training
- Dalmoth Making Training
- Diseases Prevention Training
- Driving Training
- Editing Training
- Electronics Training
- Environment Conservation & Food Mgmt. Training
- Fertilizer Production Training
- First Aid Training
- Fish Business Training
- Fishery Training
- Forest Management Training
- Fruits Farming Training

- Fruits Purify & Mgmt. Training
- Furniture Training
- Gender Equality & Dev. Training
- Ghatta Mgmt. Training
- Ginger Cultivation Training
- Goat Raising Training
- House Wiring Training
- Improved Stove Training
- JTA Training
- Kitchen Gardening Training
- Leadership Training
- Literacy Class
- Market Management Training
- Masson Training
- Mechanical Training
- Medical Mgmt. Training
- Metal Work Training
- Micro Enterprise Training
- Milk Business Training
- Misc. Capacity Building
- Nanglo Making Training
- Noodles Making Training
- Nursery Management Training
- Off Season Veg Farming Training
- Organisation Management Training
- Painting Training
- Pasture Land Mgt. Training
- Photographer Training
- Pickle Making Training
- Pig Raising Training
- Plantation Training
- Plumber Training
- Pond Maintenance Training
- Poultry Training
- Power Troller Mgmt. Training
- Project Management Training
- Pump Operation Training
- Rabbit Keeping Training
- Radio TV Maintenance Training
- Radipakhi Weaving Training
- Refreshment Training
- Repair And Maintenance Training
- Retail Business Training

- Goldsmith Training
- Group Management and Leadership Training
- Health and Sanitation Training
- Herbal Nursery Management Training
- Horse Raising Training
- Hotel Mgmt. Training
- Rickshaw Maintenance Training
- Saving & Credit Mgmt. Training
- Seed Development Training
- Sewing Cutting Training
- Sheep Raising Training
- Shoe Making Training
- Skill Development Training
- Soap Making Training
- Solar Maintenance & Repairing Training
- Stamp Making Training
- Study Tour
- Sudeni Training
- Tailoring Training
- Tap Maintenance Training
- Tapari Training
- Toilet Construction Training
- Vegetable Farming Training
- Vegetable Storage Training
- Vehicle Maintenance Training
- Veterinary Training
- Water Supply Maintenance Training
- Women Health Training
- Women Skill Development Training
- Wood Craft Training

Social Service

- Birth Certificate And Citizenship Regd.
- First Aid Instruments
- Furniture For Community Building
- Health and Sanitation
- Help To Disable People
- Scholarship
- School Furniture
- Stretcher

NDM INNOVATIVE ACTIVITIES

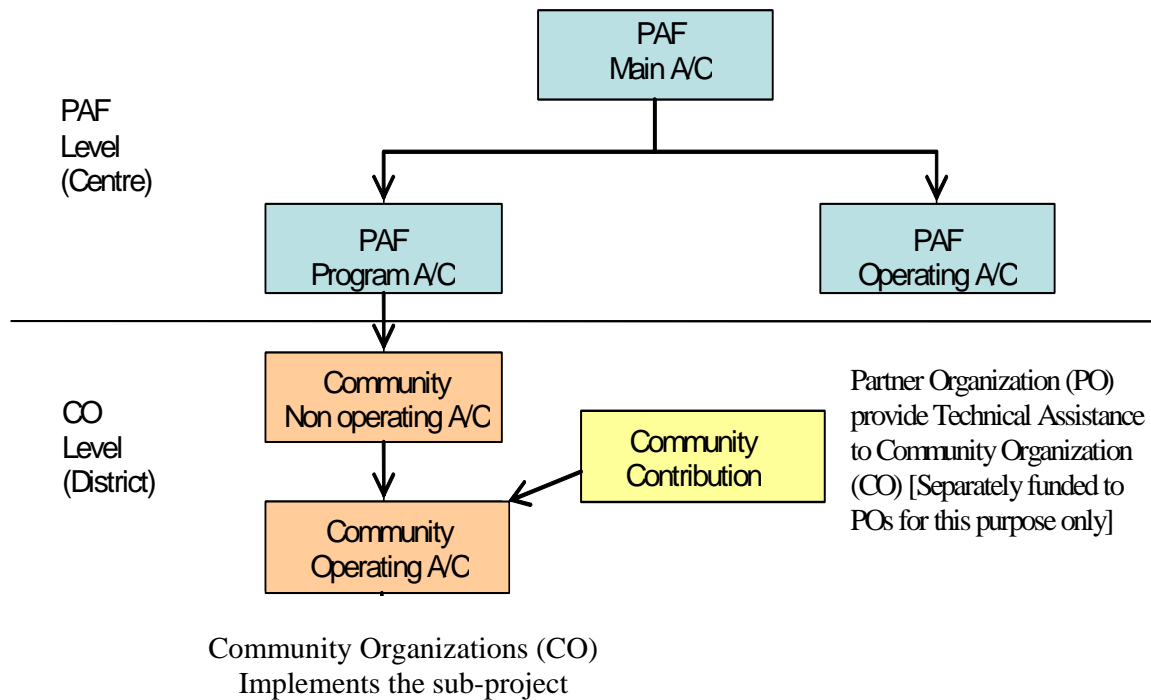
- Agro-Based Income Generation Project
- Benefiting Rural Areas through Wi-Fi Technology
- Briquette Production
- Cardamom Cultivation in Community Forest
- Fisheries for Livelihood of Women and Deprived Communities
- Healthy Women for Sustainable Development
- More Rice for Food Deficit people by using less inputs
- Orange and Coffee Production and Marketing Management
- Pigeon Keeping Project for Income Generating
- Pot-in-pot Evaporative Cooling Technology for Income Generation and Food Preservation
- Sustainable Safe Water Provision in Rural Parsa District
- Use of Local Resources for Sustainable Self-Independence

- "Light for All" Intermediate Technology for Long-Term Solution
- Allo Enterprise Resource Centre Under Women Cooperative
- Appropriate Utilization of Local Resources
- BLUE REVOLUTION
- Community-Based Tourism in Salpa-Arun Trek
- Himalayan Community Innovation Project
- Cows Urine, Source of Employment, Income and Organic Production
- Customary Business Promotion for Livelihood Improvement
- Economic Promotion & Community Pond-Protection Project
- Electric Rickshaw Redefining Transportation in Terai
- Ghatte Bijuli-Gaun Jhilimili
- Income Generating Agriculture for Livelihood Support
- Low-cost Organic farming: A New Way of Life
- Mushroom & Organic Vegetable Production for Poverty Reductions & Peace
- Pesticides/Insecticides Used Farming will be alone if our Organic goes from School to Home
- Pesticides/Insecticides Used Farming will be alone if our Organic goes from School to Home
- Promotion of Yak Through Tourism for Livelihood of People
- Rehabilitation of Displaced Single Women (Widows)
- Resham Koya Ko Mala (Silk Garland Production) Utpadan
- Riverbank Farming for Livelihood's Promotion in Terai
- Rural Bee Resource Centre for Employment of Women
- Soap Making for Income, Conservation and Hygiene
- Technology for Access, Access For Livelihood
- Use of Local Resources for Sustainable Self-Independence
- Using Common Salt to Treat Water for Drinking
- Waste Banana Stump Based Micro Enterprise

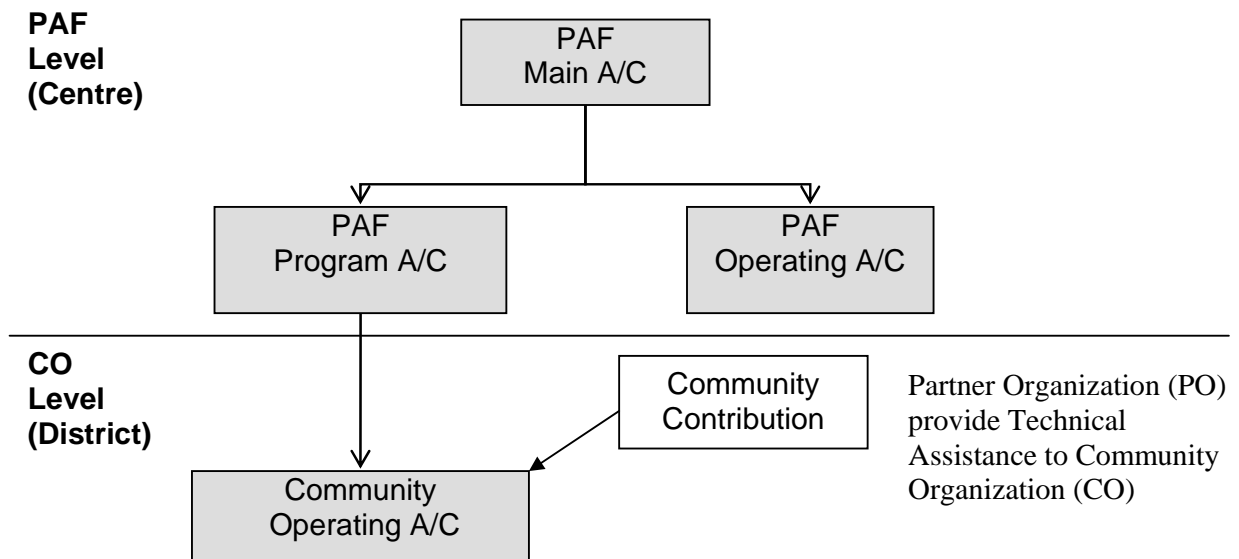
OTHER INNOVATIVE ACTIVITIES

- Micro-Hydro Power Project in collaboration with AEPC
- Vegetable Farming on Lease Land for Landless
- Uplift Chepang community people in Dhading district
- Creating and enbaling environment to the Dalit Community--"Mukta Kamayia"
- Lift Water Supply and enhanced livelihoods of Dalits, Ethnics and indigeneous people.
- Gaun besi ropeway programme for poverty alleviation
- Area Development in 11 VDCs: Integrating livelihood improvement of trival communities (Chepang and Tamang) through agro forestry, plastic water harvesting construction and link road construction
- Bankariya and Praja/Chepang improvement by livestock, agriculture, education and other income generating program support by locally available resources
- Targeted Vocational Education through Revolving Fund
- IG activities for poverty reduction--Livestock development, vegetable farming, etc.
- IG Programmes for poverty reduction--Making women starting business on agriculture trough Organic Farming
- Wire Bridge
- Irrigation Users' Group

Annex IV: Funds Flow Modality to Community for Sub-Project Implementation



From FY 2066/67 (2009/10), non operating community account is removed. Funding are being transferred directly to community operating accounts.



Annex V (1): CO registration, agreement for sub-project and disbursement status (cumulative to date)

District	CO Registered with PAF	Agreement			Disbursement					
		With CO	No.	Amount (NRs.)	Non Operating		Operating		Direct to Operating	
					Amount (NRs.)	Amount (NRs.)	Amount (NRs.)	Amount (NRs.)	Amount (NRs.)	Amount (NRs.)
Initial 6 Districts										
Darchula	857	788	996	384,140,992.11		294,219,011.17		283,297,788.24		9,029,506.00
Kapilbastu	703	702	713	355,345,735.02		341,442,019.02		332,319,411.41		-
Mugu	193	173	258	96,291,250.00		84,889,415.00		80,243,367.50		5,900,000.00
Pyuthan	947	918	1,049	512,463,782.87		370,937,936.35		352,156,587.15		69,558,196.89
Ramechhap	989	942	1,050	408,462,407.24		259,147,650.84		237,442,216.81		29,365,887.04
Siraha	943	933	954	366,932,140.08		331,406,591.78		315,034,933.82		7,211,993.00
Sub Total	4,632	4,456	5,020	2,123,636,307		1,682,042,624.16		1,600,494,304.93		121,065,582.93
19 Additional Districts										
Achham	468	466	545	285,576,610.00		201,175,455.00		187,714,599.00		5,692,672.00
Baitadi	552	343	404	193,558,649.83		146,198,776.21		130,642,871.24		-
Bajhang	313	298	389	194,162,763.24		94,092,799.35		89,929,729.55		-
Bajura	262	261	290	148,673,254.36		131,265,755.36		127,363,578.56		1,224,522.00
Dadeldhura	298	235	254	117,158,312.99		110,906,620.99		110,705,420.99		-
Dailekh	252	252	252	134,732,419.00		92,355,697.00		92,355,697.00		-
Dolpa	165	165	168	90,874,214.00		56,013,754.00		55,836,313.80		-
Doti	316	315	329	154,203,615.47		136,727,146.13		123,316,185.31		2,069,210.29
Humla	277	277	301	127,287,140.00		115,133,860.00		114,433,860.00		9,390,704.00
Jajarkot	293	238	262	174,715,562.53		115,300,621.15		108,692,826.70		6,610,026.62
Jumla	317	316	342	232,426,628.19		178,554,467.20		162,063,883.20		2,100,000.00
Kalikot	457	420	436	205,258,932.40		147,273,180.00		108,597,343.60		-
Mahottari	476	472	474	185,164,394.00		116,404,935.40		109,528,916.40		468,426.00
Rasuwa	258	214	224	91,207,888.97						-

District	CO Registered with PAF	Agreement			Disbursement				
		With CO	No.	Amount (NRs.)	Non Operating	Operating		Direct to Operating	
					Amount (NRs.)	Amount (NRs.)	Amount (NRs.)		
					90,443,460.80		80,031,960.20		
Rautahat	779	759	782	417,598,676.05	203,546,826.21		189,209,421.03	58,908,243.38	
Rolpa	98	98	98	47,733,820.00	31,194,774.00		31,194,774.00	-	
Rukum	246	132	133	53,462,591.50	41,254,151.00		36,058,021.00	-	
Sarlahi	559	559	559	226,434,058.00	226,656,433.40		219,996,918.00	-	
Sindhuli	658	653	763	377,010,794.47	315,048,831.52		299,804,213.34	-	
19 Dist. Tot.	7,044	6,473	7,005	3,457,240,325.00	2,549,547,544.72		2,377,476,532.92	86,463,804.29	
25 Dist. Total	11,676	10,929	12,025	5,580,876,632.32	4,231,590,168.88		3,977,970,837.85	207,529,387.22	
Innovative Programme Districts									
Baglung	1	1	1	722,165.00	722,165.00		722,165.00		
Chitawan	35	35	50	14,549,811.00	10,764,147.00		9,542,024.00		
Dhading	81	81	91	38,246,164.00	33,117,492.20		33,117,492.20	52,847.00	
Kanchanpur	106	105	105	32,714,642.00	32,714,642.00		29,215,022.00		
Kavrepalan	1	1	1	1,735,037.00	1,735,037.00		1,735,037.00		
Lalitpur	2	2	2	6,784,220.00	6,784,220.00		6,784,220.00		
Makwanpur	96	81	85	33,970,296.52	21,338,823.52		20,191,749.02	6,974,250.00	
Morang	61	61	61	32,087,754.87	32,087,754.87		32,087,754.47		
Nawalparasi	1	1	1	1,551,248.00	1,551,248.00		1,551,248.00		
Surkhet	1	1	1	3,015,982.00	3,015,982.00		2,020,708.00		
Innovative Tot.	385	369	398	165,377,320.39	143,831,511.59		136,967,419.69	7,027,097.00	
Total =	12,061	11,298	12,423	5,746,253,952.71	4,375,421,680.47		4,114,938,257.54	214,556,484.22	

Note: Additionally, agreements are made with 37 NDM sub-projects through POs that amounts NRs 49,505,922 (NRs 16,549,491.00 NDM2005, NRs. 32,956,431 NDM2008). Out of this 42,690,515.00 is disbursed till date.

Annex V (2): CO registration, agreement for sub-project and disbursement status (Only FY 2009-10 to date)

District	CO Registered with PAF	Agreement			Disbursement					
		With CO	No.	Amount (NRs.)	Non Operating		Operating		Direct to Operating	
						Amount (NRs.)		Amount (NRs.)		Amount (NRs.)
Initial 6 Districts										
Darchula	72	39	84	60,161,149.00		-		21,387,598.20		9,029,506.00
Kapilbastu	-	-	-	-		-		941,699.00		-
Mugu	7	-	1	-		-		-		5,900,000.00
Pyuthan	110	104	124	68,233,657.00		-		28,818,123.63		69,558,196.89
Ramechhap	40	39	76	46,139,743.00		-		284,790.00		29,365,887.04
Siraha	-	-	-	-		-		23,958,690.07		7,211,993.00
Sub Total	229	182	285	174,534,549.00		-		75,390,900.90		121,065,582.93
19 Additional Districts										
Achham	49	49	66	41,352,978.00		-		1,430,881.00		5,692,672.00
Baitadi	54	47	53	27,188,308.00		-		-		-
Bajhang	119	108	145	100,069,964.00		-		61,844.00		-
Bajura	19	19	19	10,921,626.00		-		-		1,224,522.00
Dadeldhura	0	0	0	-		-		-		-
Dailekh	0	0	0	-		-		-		-
Dolpa	46	46	49	33,825,850.00		-		-		-
Doti	0	0	0	-		-		5,019,382.00		2,069,210.29
Humla	0	0	5	4,331,178.00		-		-		9,390,704.00
Jajarkot	1	0	1	-		-		-		6,610,026.62
Jumla	15	15	23	21,265,455.00		-		23,024,444.20		2,100,000.00
Kalikot	89	53	62	30,588,730.00		-		-		-
Mahottari	10	10	10	4,389,220.00		-		1,374,348.00		468,426.00
Rasuwa	0	0	0	-		-		-		-

District	CO Registered with PAF	Agreement			Disbursement					
		With CO	No.	Amount (NRs.)	Non Operating		Operating		Direct to Operating	
						Amount (NRs.)		Amount (NRs.)		Amount (NRs.)
								841,911.00		
Rautahat	142	141	145	71,511,994.00		-		28,003,318.93		58,908,243.38
Rolpa	26	26	26	12,092,250.00		-		5,195,732.00		-
Rukum	41	13	13	6,966,500.00		-		-		-
Sarlahi	0	0	0	-		-		35,413,750.00		-
Sindhuli	34	31	54	28,540,149.00		-		17,394,305.50		-
19 Dist. Tot.	645	558	671	393,044,202.00	0	-	0	117,759,916.63		86,463,804.29
25 Dist. Total	874	740	956	567,578,751.00	0	-	0	193,150,817.53		207,529,387.22
Innovative Programme Districts										
Baglung	0	0	0	-		-		361,165.00		
Chitawan	9	9	9	3,785,664.00		-		126,787.00		
Dhading	0	0	0	-		-		7,613,740.20		52,847.00
Kanchanpur	0	0	0	-		-		-		
Kavrepalan	0	0	0	-		-		-		
Lalitpur	0	0	0	-		-		-		
Makwanpur	6	0	1	3,500,000.00		-		1,583,126.00		6,974,250.00
Morang	0	0	0	-		-		-		
Nawalparasi	0	0	0	-		-		-		
Surkhet	0	0	0	-		-		-		
Innovative Tot.	15	9	10	7,285,664.00	0	-	0	9,684,818.20		7,027,097.00
Total =	889	749	966	574,864,415.00	0	-	0	202,835,635.73		214,556,484.22

Annex VI: Completed Sub Projects (1)

District	No
<u>Income Genetation</u>	
Registered As	19 District
Achham	247
Baitadi	221
Bajhang	112
Bajura	198
Dadeldhura	232
Dailekh	192
Dolpa	115
Doti	258
Humla	248
Jajarkot	57
Jumla	176
Kalikot	173
Mahottari	221
Rasuwa	183
Rautahat	258
Rolpa	49
Rukum	78
Sarlahi	523
Sindhuli	382
	3,923
Registered As	6 District
Darchula	537
Kapilbastu	583
Mugu	119
Pyuthan	480
Ramechhap	590
Siraha	697
	3,006
Registered As	Innovative
Chitawan	20
Dhading	56
Kanchanpur	75
Kavrepalanchok	1
Makwanpur	20
Morang	61
	233
Income Genetation Total	7,162

<u>Infrastructure</u>	
Registered As	19 District
Achham	21
Baitadi	50
Bajhang	62
Bajura	25
Dadeldhura	1
Doti	3
Humla	18
Jajarkot	6
Jumla	72
Rasuwa	8
Rautahat	10
Sindhuli	34
	310
Registered As	6 District
Darchula	187
Kapilbastu	367
Mugu	75
Pyuthan	84
Ramechhap	92
Siraha	235
	1,040
Registered As	Innovative
Baglung	1
Chitawan	4
Dhading	2
Kavrepalanchok	1
Lalitpur	2
Makwanpur	20
Morang	45
Nawalparasi	1
	76
Infrastructure Total	1,426
Total Investment	<u>8,588</u>

No of Completed Infrastructures by Types

Activity	No
Boring Pump	61
Bridge	17
Building	146
Building Maintenance	2
Canal	1
Chilling Vat Set	4
Culvert	61
Dhikki Pump	360
Drainage	3
Dumping Site	107
Electricity Line Extension	27
Fencing	4
Ghatta	143
Hume Pipe	6
Hydro Power	52
Improved Stove	2050
Irrigation	2097
Irrigation Rehabilitation	7
Milk Chilling Centre	2
Plastic Pond	37
Pond	14
Pond Maintenance	4
Pump Set/Motor	121
Rice Mill	20
River Training	3
Road	87
Road Maintenance	8
School Boundary Wall	95
School Maintenance	12
Solar System	544
Toilet	2613
Water Pump	70
Water Supply	1535
Water Supply Maintenance	70

Annex VI: Sub-Project Physical Achievement (2)

SN	Activities	No. of Beneficiary HH
A	Income Generating Activities	34,649
	Agriculture & Others	21235
	Livestock	241434
	Manufacturing & Others	9677
	Service Sector	11669
	Social Service	3700
	Trading	42423
B	Community Infrastructure	117,857
	-	496
	Bio Diesel Expler Machine	19
	Boring Pump	416
	Bridge	4697
	Building	21628
	Building Maintenance	55
	Canal	51
	Chilling Vat Set	4
	Culvert	4931
	Dhikki Pump	709
	Dumping Site	107
	Electricity Line Extension	3175
	Fencing	24
	Ghatta	1025
	Hume Pipe	270
	Hydro Power	8022
	Improved Stove	2565
	Irrigation	13463
	Irrigation Rehabilitation	859
	IWM Pico Micro Hydro	32
	Milk Chilling Centre	377
	Plastic Pond	393
	Pond	335
	Pond Maintenance	220
	Pump Set/Motor	351
	Rice Mill	31
	River Training	104
	Road	21488
	Road Maintenance	198
	School Boundary Wall	353
	School Maintenance	654
	Solar System	3478
	Toilet	3768
	Water Pump	69
	Water Supply	23148
	Water Supply Maintenance	342
C	Capacity Building	316,498

Annex-VII (1): PAF Innovative Sub-projects(1)

SNo.	District	Name Of PO	Sub Project Theme	No. Of Cos.	No. Of Sub Project			Total Ben. HH	PAF Investment (Agreement Amount Rs.)		PAF Disbursement Amount (NRs.)			Project Status		
					Total	IG	Infra		PO	CO	PO	CO		C	M	N
												NOA	OA			
1	Baglung	Marshyangdi Khola Micro Hydro Project Users Committee	Micro-Hydro Power Project in collaboration with AEPC	1	1		1		722,165.00			722,165.00	722,165.00	1		
2	Chitwan	Multi - dimensional Agriculture For Dev. MADE Nepal	Vegetable Farming on Lease Land for Landless	35	50	38	18	1,278	2,547,490.00	14,549,811.00	2,019,958.00	10,276,257.00	9,415,237.00	24	17	9
3	Dhading	Forum For Community Upliftment System (FOCUS Nepal)	Uplift Chepang community people in Dhading district	81	91	81	10	2,991	5,315,810.00	38,246,164.00	4,972,198.54	33,170,339.20	33,170,339.20	66	25	
4	Kanchanpur	Nepal National Social Welfare Association (NNSWA)	Creating and enbaling environment to the Dalit Community-- "Mukta Kamayia"	106	105	105		2,461	4,774,722.00	32,714,642.00	4,121,092.00	32,714,642.00	29,215,022.00	75	29	1
5	Kavrepalanchok	Santi Jana Adarsha Sewa Club (SJASC)*	Lift Water Supply and enhanced livelihoods of Dalits, Ethnic and indigeneous people.	1	1	1	1	125	444,900.00	1,735,037.00	444,900.00	1,735,037.00	1,735,037.00	1		
6	Lalitpur	Nepal Water Conservation Foundation	Gaun besi ropeway programme for poverty alleviation		0				1,382,500.00		1,382,500.00					
7	Lalitpur	Shree Sangrakshan Rajjumarga	Gaun besi ropeway programme for poverty alleviation	2	2		2	516	3,211,475.00	6,784,220.00	3,034,440.00	6,784,220.00	6,784,220.00	2		
8	Makwanpur	Manohari Development Institute Nepal (MDI-Nepal)	Area Development in 11 VDCs: Integrating livelihood improvement of trival communities (Chepang and Tamang) through	77	66	35	31	2,793	5,011,220.00	27,172,981.52	2,062,700.00	14,881,808.52	13,273,617.52	39	26	1

SNo.	District	Name Of PO	Sub Project Theme	No. Of Cos.	No. Of Sub Project			Total Ben. HH	PAF Investment (Agreement Amount Rs.)		PAF Disbursement Amount (NRs.)			Project Status		
					Total	IG	Infra		PO	CO	PO	CO		C	M	N
												NOA	OA			
			agro forestry, plastic water harvesting construction and link road construction													
9	Makwanpur	Women, Childrend And Environment Dev. Center	Bankariya and Praja/Chepang improvement by livestock, agriculture, education and other income generating program support by locally available resources	19	19	19	567	1,322,790.00	6,797,315.00	1,305,190.00	6,457,015.00	5,335,005.50	1	18		
10	Morang	Madan Memorial Academy Nepal	Targeted Vocational Education through Revolving Fund		0			7,839,085.00		6,967,868.00						
11	Morang	Multi Puropose Development Management Services,Nep	IG activities for poverty reduction-- Livestock development, vegetable farming, etc.	28	28	28	861	2,383,460.00	10,759,341.00	1,840,180.00	10,759,341.00	10,759,341.00	28			
12	Morang	Women Professional Agriculture Group	IG Programmes for poverty reduction-- Making women starting business on agriculture trough Organic Fariming	33	33	33	17	1449	2,410,470.00	21,328,413.87	2,101,227.00	21,328,413.87	21,328,413.87	33		
13	Nawalparasi	Jaladevi Community Organisation	Wire Bridge	1	1		1	705		1,551,248.00		1,551,248.00	1,551,248.00	1		
14	Surkhet	Bheri jal Sinchai Upabhokta Samiti	Irrigation Users' Group	1	1		1	655		3,015,982.00		3,015,982.00	3,015,982.00		1	
		TOTAL		385	398	340	110	14543	36,643,922.00	165,377,320.39	30,252,253.54	143,396,468.59	136,305,628.09	271	116	11

Note: C: Completed, M: Middle Stage; N: Not started

Annex-VII (2): NDM 2005 Innovative Sub-projects(2)

NDM 2005 Innovative Sub-Projects

S.No.	Name of PO	District	Sub-Project	Agreement Date	Total Project Cost (NRs.)	Project Status
1	District Agriculture Development Office, Morang	---	More Rice for Food Deficit people by using less inputs	06-Jul-05	1,250,000.00	C
2	District Coffee Producers Association	Syangja	Orange and Coffee Production and Marketing Management	06-Jul-05	1,397,440.00	C
3	Environment And Public Health Organization	Parsa	Sustainable Safe Water Provision in Rural Parsa District	06-Jul-05	1,400,000.00	M
4	FECOFUN, Shesh Narayan Range Post Working Committee	Kathmandu	Briquette Production	06-Jul-05	900,000.00	M
5	Fewa Matsya Byawasayi Samitee	---	Fisheries for Livelihood of Women and Deprived Communities	06-Jul-05	1,050,000.00	M
6	GIFT – NDM	Bajura	Use of Local Resources for Sustainable Self-Independence	06-Jul-05	1,400,000.00	C
7	Global Multiple Cooperative Organization	Saptari	Pigeon Keeping Project for Income Generating	06-Jul-05	1,396,997.00	C
8	Himanchal Higher Secondary School	Myagdi	Benefiting Rural Areas through Wi-Fi Technology	06-Jul-05	1,387,000.00	C
9	Multidis. Inst. For Livelihood Enhan. & ..(MILAN)	Myagdi	Healthy Women for Sustainable Development	06-Jul-05	1,133,750.00	C
10	Nucleus For Empowerment Through Skill Transfer	Syangja	Agro-Based Income Generation Project	06-Jul-05	1,343,229.00	C
11	Salt Trading Corporation Limited	Kathmandu	Pot-in-pot Evaporative Cooling Technology for Income Generation and Food Preservation	06-Jul-05	1,400,000.00	M
12	Suspa Educational Development Committee	Dolakha	Cardamom Cultivation in Community Forest	06-Jul-05	700,000.00	C
				Total	14,758,416.00	

Note: C: Completed, M: Middle Stage; N: Not started

Annex-VII (3): NDM 2008 Innovative Sub-projects (3)

NDM 2008 Innovative Sub-Projects

S.No.	Name Of PO	District	Sub-Project	Agreement Date	Total Project Cost (NRs.)	Project Status
1	Center For Agriculture Technology & Training (CATT)	Kavrepalanchok	Mushroom & Organic Vegetable Production for Poverty Reductions & Peace	01-Jul-08	1,500,000.00	M
2	Center For Renewable Energy (CRE)	Morang	"Light for All" Intermediate Technology for Long-Term Solution	02-Jul-08	1,500,000.00	M
3	Converge Design Consultancy	Lalitpur	Low-cost Organic farming: A New Way of Life	29-Jun-08	1,500,000.00	M
4	Dapcha Sericulture Development Program	Kavrepalanchok	Resham Koya Ko Mala (Silk Garland Production) Utpadan	30-Jun-08	1,467,000.00	M
5	Environment Camps For Conservation Awareness (ECCA)	---	Using Common Salt to Treat Water for Drinking	01-Jul-08	1,500,000.00	M
6	FOCUS Nepal	Dhading	Economic Promotion & Community Pond-Protection Project	30-Jun-08	1,496,700.00	M
7	Gramin Urja Tatha Prabidhi Sewa Kendra P.Ltd(RETSC)	---	Ghatte Bijuli-Gaun Jhilimili	02-Jul-08	1,500,000.00	M
8	GRID Nepal	Chitawan	Technology for Access, Access For Livelihood	01-Jul-08	1,500,000.00	M
9	Hill Development And Conservation Group, Nepal	Solukhumbu	Community-Based Tourism in Salpa-Arun Trek	30-Jun-08	1,500,000.00	M
10	Himali Community Support Group_NDM	Mugu	Himalayan Community Innovation Project	18-Nov-08	1,475,000.00	M
11	Hoste Hainse	---	Pesticides/Insecticides Used Farming will be alone if our Organic goes from School to Home	01-Jul-08	1,500,000.00	M
12	Inteegrated Community Development Movement,(ICDM)	Dolakha	Promotion of Yak Through Tourism for Livelihood of People	02-Jul-08	1,450,000.00	M
13	Janaki Women Awareness Society (JWAS)	Dhanusa	Riverbank Farming for Livelihood's Promotion in Terai	01-Jul-08	1,099,231.00	M
14	Karnali Rin Tatha Rin Sahakhari Sanstan	Jhapa	Appropriate Utilization of Local Resources	30-Jun-08	1,500,000.00	M
15	Kathmandu University	Morang	Electric Rickshaw Redefining Transportation in Terai	01-Jul-08	600,000.00	M

NDM 2008 Innovative Sub-Projects

S.No.	Name Of PO	District	Sub-Project	Agreement Date	Total Project Cost (NRs.)	Project Status
16	Kaushila Foundation For Peace & Innovative Initiat	Lalitpur	BLUE REVOLUTION	29-Jun-08	1,141,800.00	M
17	Khotang Development Forum(KDF)	Khotang	Rural Bee Resource Centre for Employment of Women	30-Jun-08	1,495,000.00	M
18	NESDO Nepal	Parbat	Customary Business Promotion for Livelihood Improvement	01-Jul-08	1,500,000.00	M
19	Research And Development Nepal	Sankhuwasabha	Allo Enterprise Resource Centre Under Women Cooperative	30-Jun-08	1,500,000.00	C
20	Rural Service Society-NDM	Sarlahi	Cows Urine, Source of Employment, Income and Organic Production	01-Jul-08	1,000,000.00	M
21	Sana Kishan Sahakari Sanstha Ltd..	Morang	Waste Banana Stump Based Micro Enterprise	30-Jun-08	1,320,000.00	M
22	SUPPORT Foundation	Kanchanpur	Income Generating Agriculture for Livelihood Support	30-Jun-08	1,497,000.00	M
23	Sustainable & Equitable Development Academy (NDM)	Kalikot	Soap Making for Income, Conservation and Hygiene	30-Jun-08	984,000.00	M
24	Tanak Nath Sewa Samanj	Panchthar	Pesticides/Insecticides Used Farming will be alone if our Organic goes from School to Home	01-Jul-08	1,407,700.00	M
25	Women For Human Rights (WHR) Single Women Group	Kathmandu	Rehabilitation of Displaced Single Women (Widows)	01-Jul-08	1,498,000.00	M
				Total	34,431,431.00	

Note: C: Completed, M: Middle Stage; N: Not started

Annex-VIII (1): POs, COs and Coverage (cumulative to date)

District	No. of Working POs	Total VDC + Municipality in District	PO Committed No. of VDC	CO Working VDC	Sub Proj. No.		Beneficiary HH	
					IG	Infra	CO Member HH	Total Beneficiary HH
Initial 6 Districts								
Darchula	10	41	41	41	745	259	16,459	29,244
Kapilbastu	10	78	60	57	700	384	19,557	29,372
Mugu	6	24	24	22	172	102	5,440	11,169
Pyuthan	12	49	49	48	838	220	26,719	34,173
Ramechhap	11	55	55	51	928	157	23,312	31,031
Siraha	17	108	86	58	916	256	22,597	26,115
6 Dist. Tot	66	355	315	277	4,299	1,378	114,084	161,104
19 Additional Districts								
Achham	8	75	43	34	485	59	15,121	26,402
Baitadi	7	63	36	35	332	72	11,977	14,699
Bajhang	3	47	18	19	233	156	7,387	18,258
Bajura	4	27	27	20	261	29	8,173	10,415
Dadeldhura	9	21	21	18	235	19	6,857	7,836
Dailekh	5	56	25	25	252		9,817	9,817
Dolpa	3	23	18	18	168		4,964	5,020
Doti	5	51	31	26	315	14	10,087	12,636
Humla	5	27	27	24	279	22	6,499	7,695
Jajarkot	8	30	26	26	250	12	8,906	18,750
Jumla	7	30	30	21	323	82	11,999	13,324
Kalikot	6	30	30	28	420	16	12,289	13,461
Mahottari	12	77	23	22	474		12,065	11,824
Rasuwa	7	18	18	15	216	9	6,272	6,884
Rautahat	9	97	60	44	759	188	21,377	26,903
Rolpa	1	51	4	4	98		2,928	2,919
Rukum	3	43	16	14	133		3,984	4,023
Sarlahi	16	100	67	38	559		16,553	16,441
Sindhuli	10	54	51	33	656	107	21,000	29,025
19 Dist. Tot	128	920	571	464	6,448	785	198,255	256,332
25 Dist. Tot	194	1,275	886	741	10,747	2,163	312,339	417,436
Innovative Programme Districts								
Baglung	0	60	0	1		1	13	142
Chitawan	1	38	7	6	38	18	895	1,278
Dhading	1	50	6	6	81	10	2,394	2,991
Kanchanpur	1	20	20	8	105	1	2,416	2,461
Kavrepalanchok	1	90	1	1	1		11	125
Lalitpur	2	42	4	2		2	416	516
Makwanpur	2	44	18	18	54	31	2,650	3,360
Morang	3	65	4	3	61	45	2,301	2,310
Nawalparasi	0	74	0	1		1	11	705
Surkhet	0	48	0	1		1	9	655
Innovative Total	11	531	60	47	340	110	11,116	14,543
Sub Total	205	2,747	946	788	11,087	2,273	323,455	431,979
Innovative Programme Districts								
NDM-2005	12		25	25	10	2		8,999
NDM-2008	25		52	52	17	8		5,228
NDM Total	37	0	77	77	27	10	0	14,227
Total =	242	2,747	1,023	865	11,114	2,283	323,455	446,206

Note: 13 POs worked in 25 districts were dropped due to poor performance and inability to work.

Annex-VIII (2): POs, COs and Coverage (Only FY 2009/10 to date)

District	No. of Agreement with POs	Total VDC + Municipality in District	PO Committed No. of VDC	CO Working VDC		Sub Proj. No.		Beneficiary HH	
				Total	New VDC	IG	Infra	CO Member HH	Total Beneficiary HH
Initial 6 Districts									
Darchula	12	41	41	41	0	48	36	711	3,422
Kapilbastu	12	78	60	57	0	0	0		0
Mugu	5	24	19	22	0	1	0		0
Pyuthan	11	49	47	48	2	88	36	390	4,240
Ramechhap	7	55	47	51	2	35	41		4,082
Siraha	16	108	81	58	0	0	0		0
6 Dist. Tot	63	355	295		4	172	113	1,101	11,744
19 Additional Districts									
Achham	8	75	43	34	2	63	2	540	7,226
Baitadi	6	63	30	35	4	52	1	246	1732
Bajhang	3	47	18	19	0	76	69	2,761	9330
Bajura	4	27	27	20	0	19	0		583
Dadeldhura	8	21	21	18	0	0	0		0
Dailekh	5	56	25	25	0	0	0		0
Dolpa	3	23	18	18	6	49	0	1,250	1308
Doti	6	51	31	26	0	0	0		0
Humla	9	27	27	24	0	2	3		233
Jajarkot	7	30	20	26	0	0	1		82
Jumla	7	30	30	21	1	23	0		861
Kalikot	6	30	30	28	6	53	9		1808
Mahottari	9	77	21	22	0	10	0	199	199
Rasuwa	6	18	15	15	0	0	0		0
Rautahat	9	97	46	44	7	141	19		5,078
Rolpa	1	51	4	4	0	26	0	755	755
Rukum	3	43	16	14	2	13	0	435	438
Sarlahi	16	100	67	38	0	0	0		0
Sindhuli	10	54	40	33	1	34	20	938	1,846
19 Dist. Tot	126	920	529	464	29	561	124	7,124	31,479
25 Dist. Tot	189	1,275	824	464	33	733	237	8,225	43,223
Innovative Programme Districts									
Baglung		60		1	0	0	0		0
Chitawan	1	38	7	6	1	9	6	243	240
Dhading	1	50	6	6	0	0	0		0
Kanchanpur	1	20	8	8	0	0	0		0
Kavrepalanchok		90		1	0	0	0		0
Lalitpur		42		2	0	0	0		0
Makwanpur	1	44	11	18	0	0	1		380
Morang	2	65	3	3	0	0	0		0
Nawalparasi		74		1	0	0	0		0
Surkhet		48		1	0	0	0		0
Innovative Total	6	531	35	47	1	9	7	243	620
Sub Total	195	1,806	859	511	34	742	244	8,468	43,843
Innovative Programme Districts									
NDM-2005									
NDM-2008									
NDM Total	0	0	0	0	0	0	0	0	0
Total =	195	1,806	859	511	34	742	244	8,468	43,843

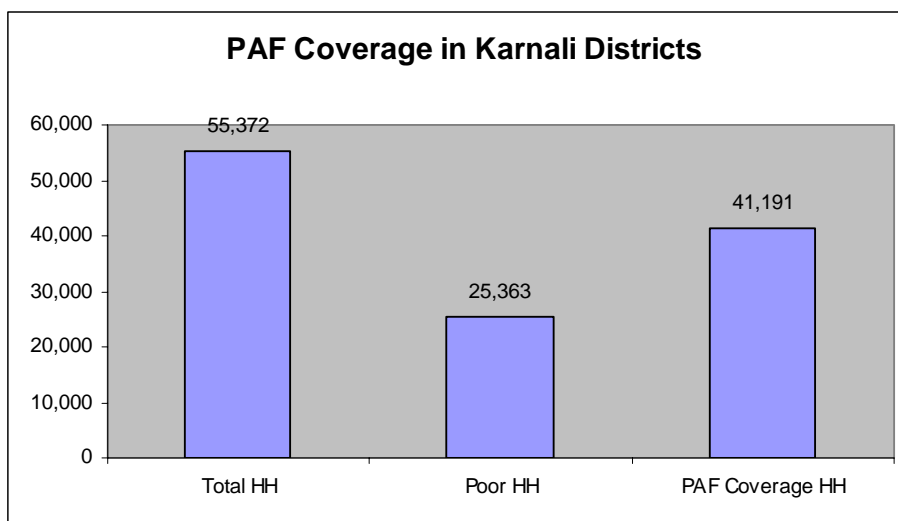
Annex- IX: Social Inclusion Strategy Reaching the Poor

<u>Targeting Sequence</u>	<u>Key Actor</u>	<u>Tools/Methods</u>
Districts ↓	PAF Management	District Level Indicators (CBS/NPC)
VDCs ↓	PAF Management Portfolio Manager	VDC Prioritization DDC-Level Stakeholders' Consultation
Wards ↓	Partner Organization (PO)	VDC-Level Interaction
Settlements ↓	Partner Organization (PO) Community	Ward-Level Interaction Settlement-Level Sensitization Settlement Social Mapping Social Assessment/ Wellbeing Ranking
Community ↓	Community Community Org. (CO)	Identification of Target Households Formation of COs Registration of COs
Target Beneficiaries	Community Org. (CO)	Project Development Link with District DDC plan Community Action Planning

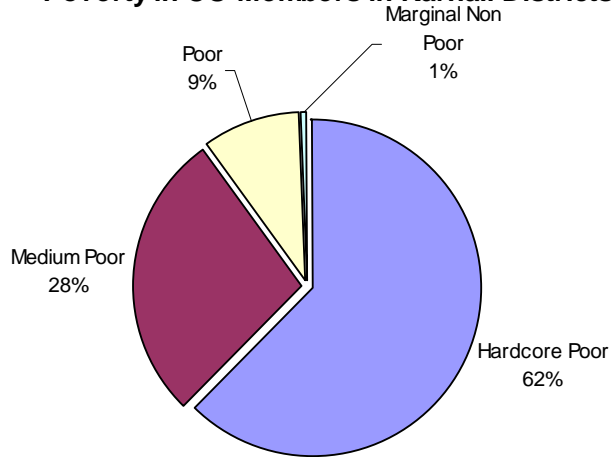
Annex X: PAF program in Karnali Districts

District	No. Of PO	Karnali VDC		CO Registration Nos	CO Agreement Nos	Karnali Households (HH)			Agreement Amount (Rs.)
		Total VDC	PAF Coverage VDC			Total HH	Poor HH	CO Member Beneficiary HH	
Dolpa	5	23	18	165	165	3,714	2,309	4,964	90,874,214.00
Humla	5	27	24	277	277	6,173	2,885	6,499	127,287,140.00
Jumla	7	30	21	317	316	8,677	5,454	11,999	232,426,628.19
Kalikot	6	30	28	457	420	9,899	10,503	12,289	205,258,932.40
Mugu	6	24	22	193	173	5,740	4,212	5,440	96,291,250.00
Total	29	134	113	1409	1351	34203	25,363	41,191	752,138,164.59
		100%	84%			100%		120%	

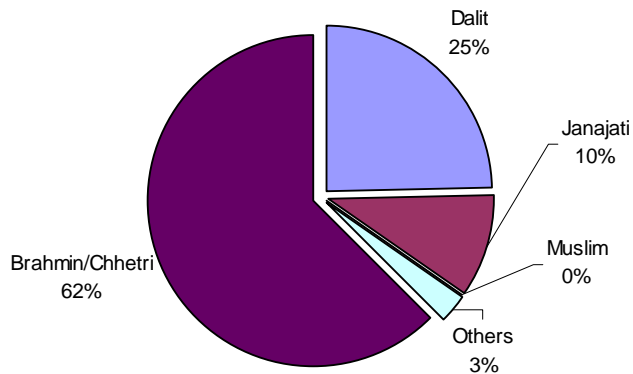
District	Total PAF Agreement Amount (Rs.)	IG No.	IG Agreement Amount (Rs.)	Infra No.	Infrastructure Agreement Amount (Rs.)
Dolpa	90,874,214.00	168	90,874,214.00	0	0
Humla	127,287,140.00	279	116,820,494.00	22	10,466,646.00
Jumla	232,426,628.19	323	202,872,452.00	82	29,554,176.19
Kalikot	205,258,932.40	420	190,533,694.20	16	14,725,238.20
Mugu	96,291,250.00	172	39,230,324.00	102	57,060,926.00
Total	752,138,164.59	1,362	640,331,178.20	222	111,806,986.39
	100%		85%		15%



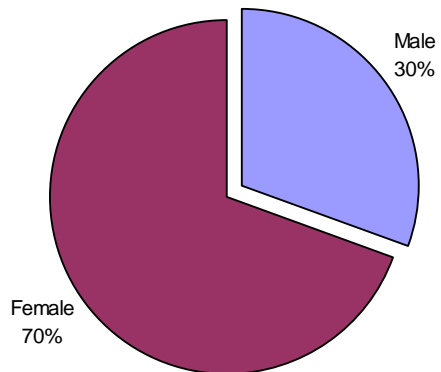
Poverty in CO Members in Karnali Districts



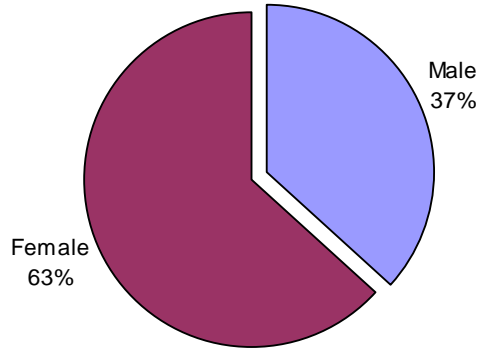
Ethnicity Wise CO Members In Karnali Districts



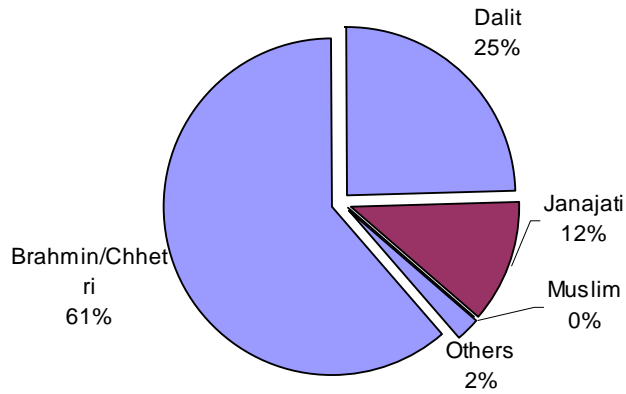
Gender Wise CO Members In Karnali Districts



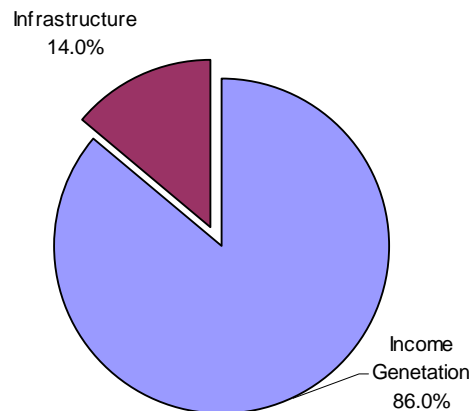
Gender Wise CO Key Position Holders In Karnali Districts



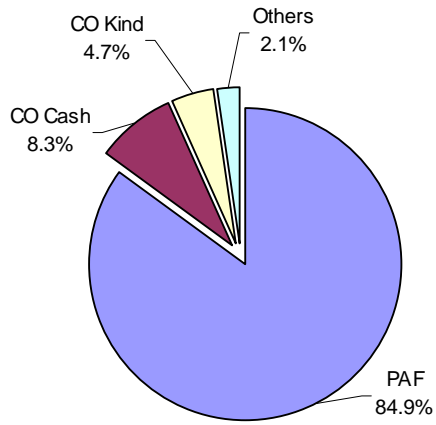
Ethnicity Wise CO Key Position Holders In Karnali Districts



PAF Investment In Karnali Districts Income Generation Vs. Infrastructure



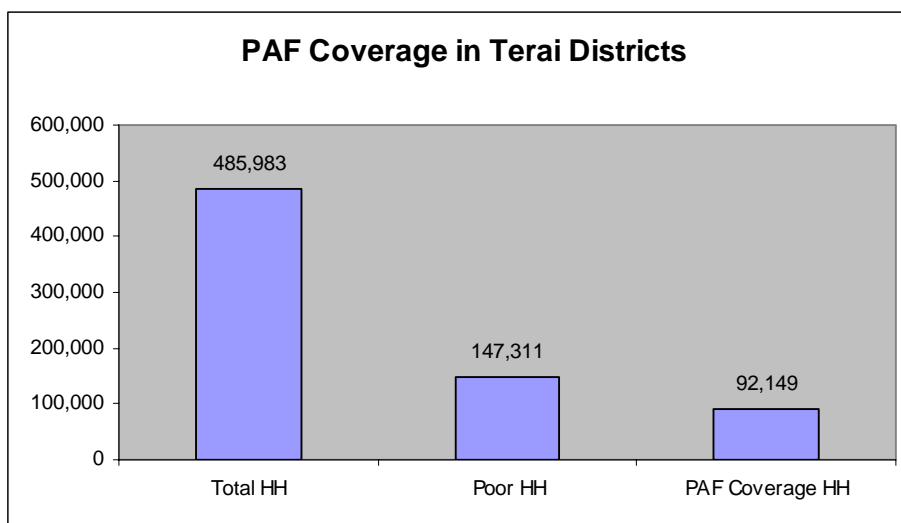
Contribution in Sub Projects In Karnali Districts



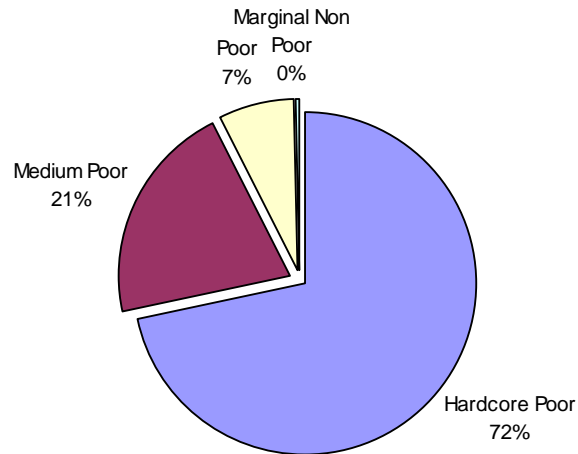
Annex XI (1) : PAF Program in Terai Districts

District	No. of PO	Terai VDC		CO Redg. No.	CO Agreement No.	Terai Households (HH)			Total Agreement PAF Amount (Rs.)
		Total VDC	PAF Coverage VDC			Total HH	Poor HH	CO Member Beneficiary HH	
Mahottari	12	77	22	476	472	113,651	33,072	12,065	185,164,394.00
Rautahat	9	97	44	779	759	88,209	26,639	21,377	417,598,676.05
Sarlahi	16	100	38	559	559	111,137	29,340	16,553	226,434,058.00
Kapilbastu	10	78	57	703	702	72,916	29,239	19,557	355,345,735.02
Siraha	17	108	58	943	933	100,070	29,020	22,597	366,932,140.08
Total	64	460	219	3,460	3,425	485,983	147,311	92,149	1,551,475,003.15
		100%	48%			100%		19%	

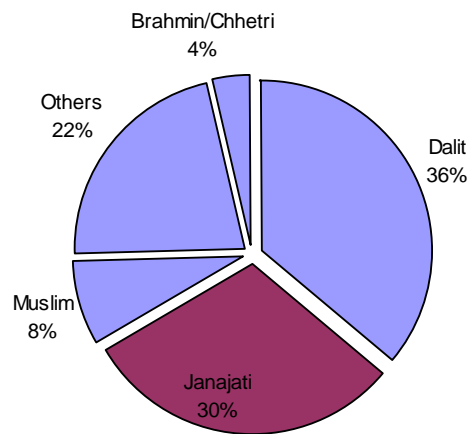
District	Total PAF Agreement Amount (Rs.)	IG No.	IG Agreement Amount (Rs.)	Infra No.	Infrastructure Agreement Amount (Rs.)
Mahottari	185,164,394.00	474	185,164,394.00		0.00
Rautahat	417,598,676.05	759	396,085,797.75	188	21,512,878.30
Sarlahi	226,434,058.00	559	226,434,058.00		
Kapilbastu	355,345,735.02	700	251,730,803.71	384	103,614,931.31
Siraha	366,932,140.08	916	324,373,705.58	256	42,558,434.50
Total	1,551,475,003.15	3,408	1,383,788,759	828	167,686,244.11
	100%		89%		11%



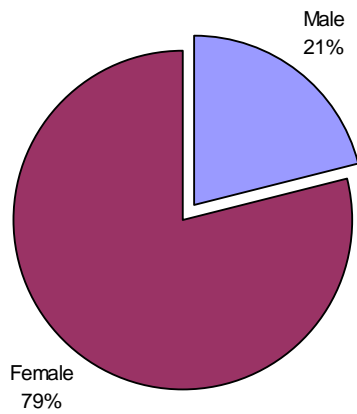
Poverty in CO Members In Terai Districts



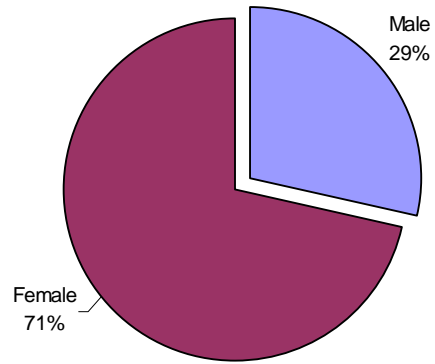
Ethnicity Wise CO Members In Terai Districts



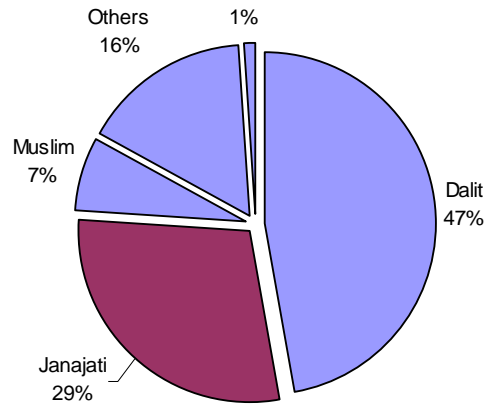
Gender Wise CO Members In Terai Districts



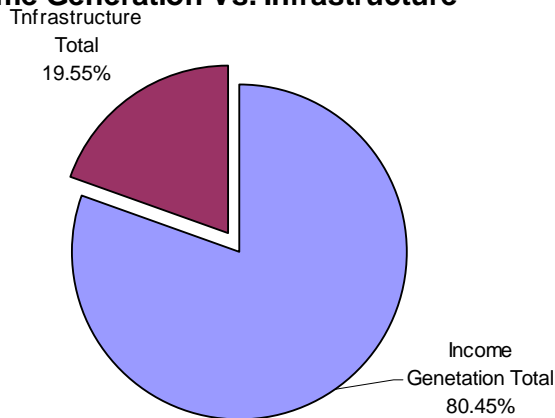
Gender Wise CO Key Position Holders In Terai Districts



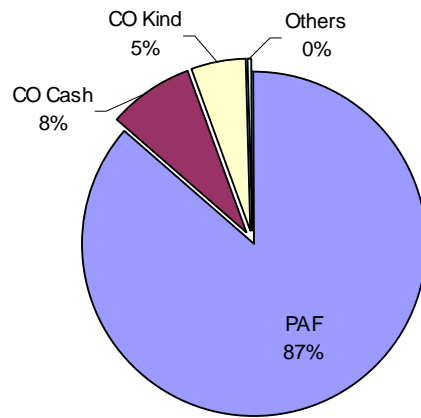
Ethnicity Wise CO Key Position Holders In Terai Districts



**PAF Investment In Terai Districts
Income Generation Vs. Infrastructure**



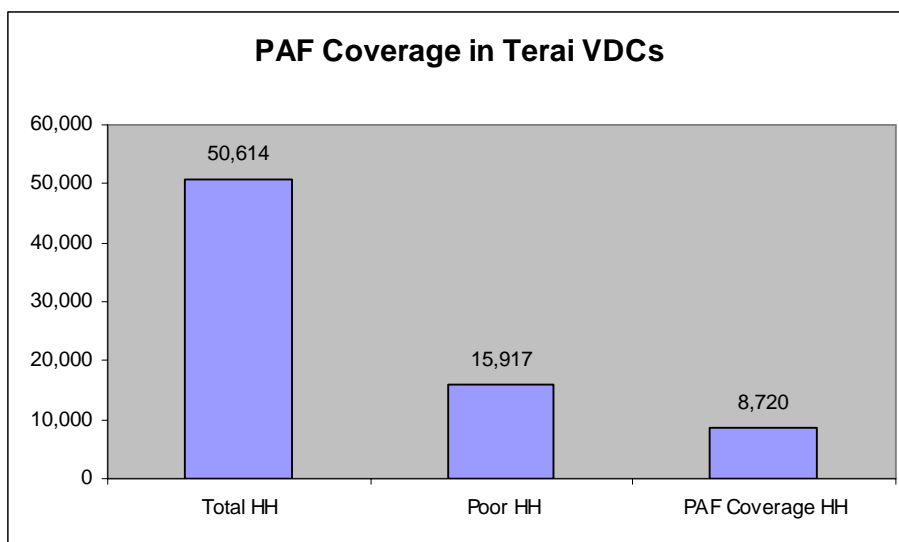
Contribution in Sub Projects In Terai Districts



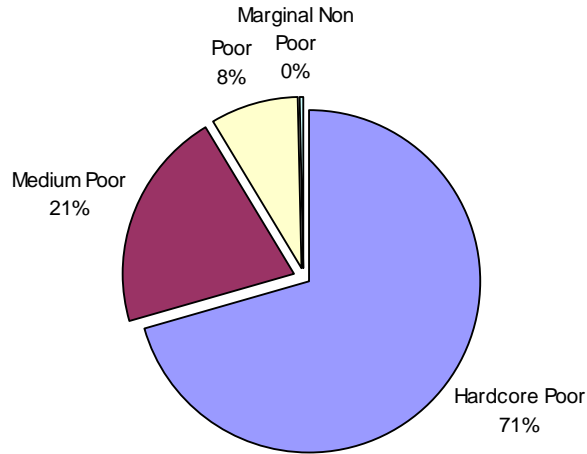
Annex XI (2) : PAF program in Terai Border VDC

District	No. of PO	Terai Border VDC		CO Redg. No.	CO Agreement No.	Terai Border VDC Households (HH)			Total Agreement PAF Amount (Rs.)
		Total VDC	PAF Coverage VDC			Total HH	Poor HH	CO Member Beneficiary HH	
Kapilbastu	5	18	12	128	130	13,826	5,544	3,695	67,042,678.63
Mahottari	3	8	3	67	67	7,486	2,178	1,400	23,638,333.00
Rautahat	2	6	3	72	68	4,058	1,226	2,036	34,066,396.35
Sarlahi	1	17	2	26	26	13,528	3,571	750	11,262,889.00
Siraha	2	14	3	35	34	11,716	3,398	839	11,705,550.00
Total	13	63	23	328	325	50,614	15,917	8,720	147,715,846.98
		100%	37%			100%		17%	

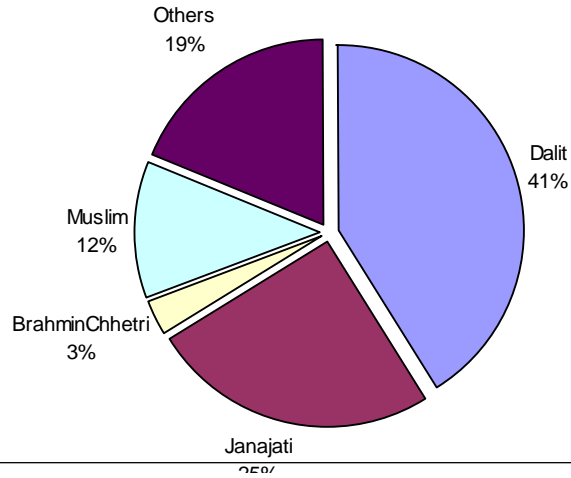
District	Total PAF Agreement Amount (Rs.)	IG No.	IG Agreement Amount (Rs.)	Infra No.	Infrastructure Agreement Amount (Rs.)
Kapilbastu	67,042,678.63	126	49,315,304.63	69	17,727,374.00
Mahottari	23,638,333.00	67	23,638,333.00		0.00
Rautahat	34,066,396.35	67	33,869,540.00	2	196,856.35
Sarlahi	11,262,889.00	26	11,262,889.00		0.00
Siraha	11,705,550.00	34	11,700,750.00	1	4,800.00
Total	147,715,846.98	320	129,786,816.63	72	17,929,030.35
	100%		88%		12%



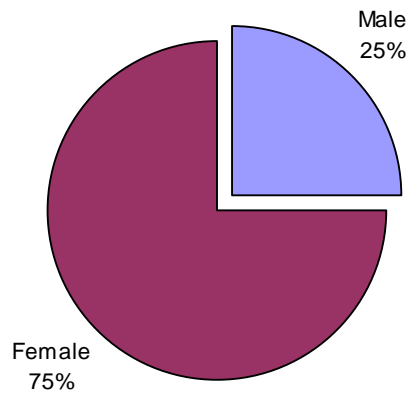
Poverty in CO Members In Terai Border VDCs



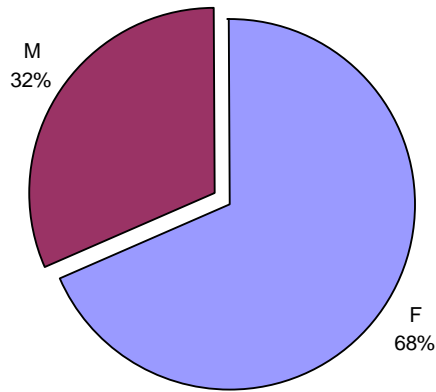
Ethnicity Wise CO Members in Terai Border VDCs



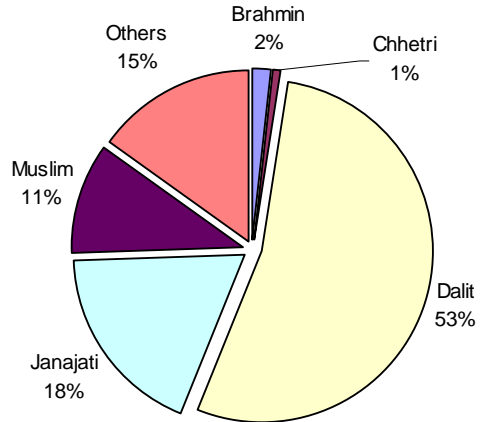
Gender Wise CO Members In Terai Border VDCs



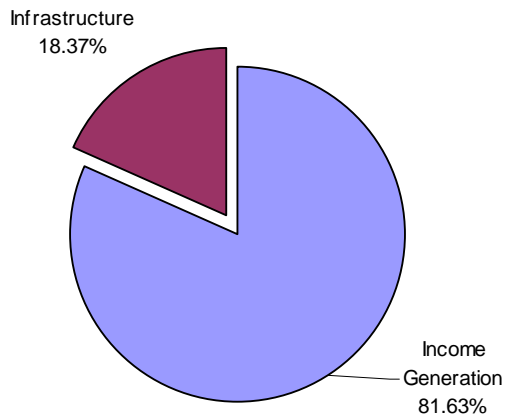
Gender Wise CO Key Position Holders in Terai Border VDCs



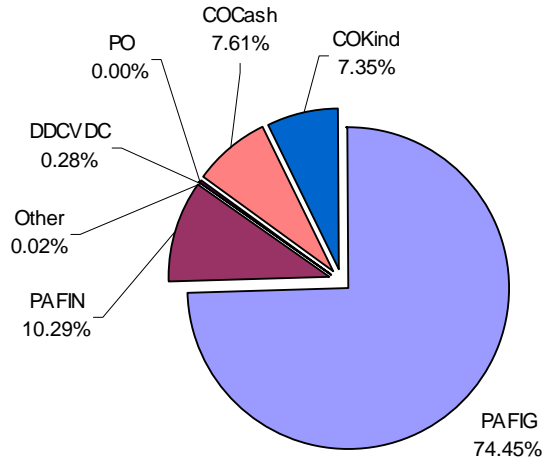
Poverty in CO Key Position Holders In Terai Border VDCs



PAF Investment In Terai VDC Income Generation Vs. Infrastructure



Contribution in Sub Projects In Terai VDC



Annex XII: Collaboration at Districts

District	Collaborating with	Jointly Supported Activities/ Sub projects
Kapilvasatu	District Education Office (DEO)	School Building at Dharampaniya VDC
	DDC	Wooden Bridge at Maharaganj VDC
	UNICEF	Construction of rooms for Child Class at Niglehawa VDC
	VDCS	Almost all VDCs has contributed for road, culverts and bridge sub-projects
	NEA	Rural electrification at Dharamganj VDC, Niglehawa VDC
	BPC/APPSP	Lift Irrigation project at Dhakhaquadi VDC
Pyuthan	BPC/ LFP	Lift Irrigation project at Ramdi VDC
	BPC/VDC	Lift Irrigation project at Ramdi VDC
	BPC/VDC	Lift Irrigation project at Gothibang VDC
	REDP/DDC/VDC	Micro-hydro project at Rajawara VDC
	VDC/ DDC	Link Road at Tusara VDC
	VDC	Link Road at Majkot VDC
Mugu	DEO	Bal Bikash Bhawan at Bijuwar
	DFID/CSP, VDC	Tirpa Gad Micro-hydro at Rugha VDCs
	DDC/RCIW, SNV	Brushu Sinchai - Kotdanda
	DAO	Apple farming in Rugha VDCS
	PCP/UNDP	Jhyari khola MHP- Pina
	DFDP, DDC	Sera lekh Drinking Water Supply- Seri VDC
	VDCs	In all infrastructures projects (water supply, micro-hydro, irrigation, buildings sub-projects VDCs has made cash contribution
Baitadi	REDP/UNDP, DDC, VDC	Patharkot MHP 17kw- Shikharpur
	REDP/UNDP, DDC, VDC	Irana Gad MHP 15 kw- Ganjari VDC
	VDCs	Shrebhawar DWSS. Chaukham VDCs
Siraha	DAO, Siraha	SRI extension in PAF supported COs in all DADO program VDCs. Pilot project of Onion Farming in Bhabanipur VDC
	NEA, VDCS	Electricity Extension for Irrigation in Phulkahakati, Padariya VDCs.
	District Veterinary Office	Technical assistance to all PAF COs in Dhodna VDC
	Dabour Nepal/ANSAB	Asparagus farming and marketing
	WINROCK	Bio- Diesel demonstration
	DADO	Collaboration for all district agriculture programme
Darchula	DDC/ VDC	Drinking water supply project at Ranishikar, Eyarkut, Khandeshwori, Shankarpur, Lali VDC
	REDP	Micro-hydro project at Gokuleshowr VDC
	CARE	Micro-hydro project at Byans VDC
	VDC	School Building at Dhap, Gokuleswar, Khar, Rithachupata VDC
Dadeldhura	REDP	Railgad MHP 15kw Kailpalmandu VDCs
Humla	AEPC, GEF, Nepal Trust and VDC	Syada MHP 26 kW- Syada
Bajhang	Winrock Nepal	Establishment of VSAT internet center, Hemantawada, luyata VDCs
Jumla	AEPC, VDCs	Micro-hydro -11kW at Talium VDC, Micro-hydro 22kW at Patarsi VDC

District	Collaborating with	Jointly Supported Activities/ Sub projects
	District Agriculture Office/ Veterinary Office	Livestock and Agricultural Training
Rasuwa	District Agriculture Office	Japanese Trout Fish Farming at Gatlyang VDC
	DDC/VDC, German NRN	Phalagu Khola Bagatetear Irrigation at Laharepauwa VDC
Dhading	Room to Read, DDC, VDC	Construction of School Building at Pida VDC
Baglung	AEPC	Micro-hydro scheme 17 kW at Amarbhumi VDC
Achham	WINROCK	Information Center (V- Sat) at Bailpata VDC
	DDC/ VDC/ REDP	Micro- Hydro project at Thandi & Kaskot VDC
Morang	Cottage & Small Industry Office	3 Month House Wearing Training for Community Members, Tankisunwari & Baujanathpur VDC
Bajura	DDC/VDC/REDP	Mycro- Hydro at Kalli VDC
Jajarkot	AEPC	Mycro- Hydro at Khalanga VDC
	VDC	Birendra Ma. Bi. school Building at Bhagawati VDC
Mahottari	Action Aid	Women Empowerment programme at Balawa & Sarpali VDC
Ramechhap	MEDP	Capacity building of CO at Ramechhap, Sukajor, Funarpani & Manthali VDC
	District Veterinary Office	Vaccination and fodder plant distriburtion at Okhreni VDC
	District Education Office	Informal Education programme at Ramapur VDC
	District Health Office	Support for Health Kid-box for different CO of Different VDC
Kavre	DDC/ VDC/ CIAM	Lift Drinking Water project at Jamdi VDC
Sindhuli	DDC, VDC, Forest User Groups, DEO, Constituent Assembly members , WDO, DLSSO	To construct a mechanized bridge in Tandi VDC, DDC Sindhuli, Tandi VDC, Belshrot VDC of Udaypur district and a few constituent assembly members of Sindhuli and Udayapur districts provided Rs 3284609 out of it's total cost Rs 6784609. Likewise, to construct a drinking water subproject in Pipamadi, VDC provided Rs 500000 To support a school building in Mahendrajhayadi DEO, Sindhuli provided Rs 266055. DLSSO Sindhuli has been providing vaccination and other trainings related to livestock in many PAF program VDCs in Sindhuli. WDO, Sindhuli conducted non formal education training classes in 20 COs
Doti	AEPC/DDC/VDC	Micro-Hydro at Toleni VDC and Daud VDC
	Dipayal Silgadhi Nagarpalika & Samuhik Abhiyan	School Building construction at D.S.N.P-5

Annex XIII: Community Institutional Development

List of CO Federations in Districts

S.N.	District	No of CO Federation	Specific Objectives/Activities
	Accham	18	Five federations have been formed for Pasu Bima Programme, 2 for ICT (<i>Information and communication technologies</i>) at Bayalpata, 2 for construction of micro hydro sub projects, 5 for school buildings and 4 for solar school systems at various VDCs.
1	Bajhang	1	Seven COs from Hemantawada and Luyata VDC have been federated to run a Seti Saipal V-SAT Center at Chainpur to promote capacity building, entrepreneurs' skill and knowledge at local level.
	Dadeldhura	10	Four CO federations have been formed for the construction of school buildings, Three for implementation of drinking water supply sub projects, Two for construction of suspended bridges and One for building child development center.
2	Darchula	14	11 CO federations have been formed to implement micro hydro sub project and three CO federations to implement electric line extension schemes at various VDCs.
3	Doti	5	Five CO federations have been formed in six VDCs for building and maintaining schools, for constructing a health post building and to run a drinking water supply scheme.
4	Kalikot	2	Two CO federations have been formed to implement a micro hydro sub project at Phoi mahadev VDC and a pico hydro sub project at Chilkhaya VDC for rural electrification.
5	Kapilvastu	1	357 buffalo raising farmers of 5 VDCs namely Ganeshpur, Biddhyanagar, Bhagamanpur, Sirshihawa and Ramnagar have been federated and formed Shivam Dugdha Utpadak CO for collecting milk and operating chilling centre and cattle insurance scheme for members.
6	Mugu	3	Two federated COs have been formed for constructing and operating micro hydro scheme for rural electrification and one for micro irrigation.
7	Pyuthan	44	41 CO federations has been formed for implementation of different infrastructure sub projects like link road, drinking water, irrigation, micro hydro, school building in various VDCs. Two CO federations have been formed to operate community livestock Insurance program in Tusara and Bangesal VDC. One CO federation has been formed for the establishment of Vegetable Collection Centre at Lung VDC.
8	Rautahat	9	9 CO federations have been formed in 9 VDCs for livestock management and insurance policy
9	Sindhuli	12	To implement infrastructure schemes like rural road, irrigation, drinking water, mechanized bridge etc.
10	Siraha	9	One federated CO for operating a chilling centre at Bishnupurkalti VDC and another one to run breeding centre at Dhodhana and Bhadaiya VDC Five CO federations have been formed to construct culverts in various VDCs Two CO federations have been formed in Mukshar VDC to construct to construct Agriculture roads

List of Cooperatives formed through CO's initiatives in Districts

S.N.	District	No of Cooperatives	Specific Objectives/Activities
1	Accham	35	To manage all COs within the VDC.
2	Darchula	9	Six cooperatives have been established in 6 VDCs to provide saving and credit services to CO members Three cooperatives established to provide electricity extension and distribution service by leasing agreement with NEA.
3	Kapilvastu	1	A multipurpose cooperative has been established to run agro vet service and milk collection & marketing center
4	Mugu	1	Rara Bahuudesiya cooperative has been established with the joint efforts of 11 COs of three VDCs namely Pina, Karkiwada and Shreenagar to provide agro-vet services to its members, to establish hatchery and make available chicks in district for its members To run dairy at district headquarter collecting milk from its members.
5	Pyuthan	2	Two cooperatives have been established at Arkha and Rajbara VDC to manage revolving fund & saving credit fund, provide micro finance services to its members and for institutional development and sustainability of CO efforts.
6	Rautahat	2	A cooperative has been formed in Bishanpurwar Manpur VDC to establish and operate milk chilling center for marketing milk products produced by the members. A cooperative has been established at Santapur Dostiya VDC to provide saving and credit service for agricultural and livestock management
7	Siraha	1	Three COs in Muskar VDC are in process to register Cooperative to run saving credit and provide technical services to its member
8	Chitwan	1	Eight different COs in Khaireni VDC have teamed up to form a multi-purpose cooperative. 90 per cent of the cooperatives members are women. They are carrying cooperative farming in lease-land, marketing of vegetable products and saving credits, among others.

Annex XIV: Summary Results of Follow-on Impact Survey

Selected Indicators	Programme area			Control area			% Difference
	2006	2009	Difference	2006	2009	Difference	
1. Consumption and income							
Nominal HH consumption per capita (Rs.)	15,087	17,796	2,709	13,684	15,549	1,865	45.3
HH consumption only for those who received money 2 yrs ago	17,801	21,961	4,160				23.4
Nominal HH income per capita (Rs.)	13,578	15,119	1,541	13,435	14,212	777	98.3
HH income only for those who received money 2 yrs ago	11,517	13,675	2,158				18.7
Bi-variate regression result							
Effect of PAF activities (in month) on consumption	b = 0.074 (p = 0.002); N = 258						
Effect of PAF activities (in month) on income	b = 0.135 (p = 0.004); N = 257						
2. Employment: Average Hours of Work in a Week (hours)	29.9	35.4	5.5	31.1	39.6	8.5	-35.3
3. Migration and remittance							
Migration rate (%)	14.0	15.0	1.0	19.0	18.1	-0.9	-211.1
Remittance sent during last 12 months (%)	39.0	41.1	2.1	28.0	35.4	7.4	-71.6
4. Health and nutrition							
% Women below 18.5 BMI	27.6	22.2	-5.4	15.4	12.5	-2.9	86.2
Under five mortality (per 1000)	10.0	4.3	-5.8	9.0	-	-	-
5. Current schooling							
Ever attended school (%)	51.8	53.0	1.2	57.6	63.8	6.2	-80.6
Currently attending school (%)	60.5	62.9	2.4	58.3	67.5	9.2	-73.9
6. Social environment							
Discrimination faced by HH members (%)	7.6	7.0	-0.6	7.3	7.8	0.5	-220.0
Discrimination faced by community members (%)	15.2	12.8	-2.4	13.1	24.0	10.9	-122.0
Community dispute during last 12 month (%)	13.9	7.4	-6.5	7.3	10.2	2.9	-324.1
7. Women empowerment							
Women participation in social/ development organization (%)	10.9	15.9	5.0	10.7	12.7	2.0	150.0
Collective decision in HH matter (all member)	33.5	16.4	-17.1	50.9	5.9	-45.0	-62.0
Freedom of mobility (%)	55.0	61.3	6.3	52.8	66.6	13.8	-54.3

Annex XV: Progress and Expenditure in FY 2066/67 (2009-10 Only)

Program Physical Implementation Status - FY-2066/67(2009/10)			
Description	Yearly Target	Physical Progress	Progress %
Income Generation Sub Projects	2947	733	24.87%
Infrastructure Sub Projects	770	237	30.78%
Innovative Sub-Projects	206	16	7.77%
Total Sub-Projects	3923	986	25.13%
Partner Organization	400	223	55%
Beneficiary HHs	1,50,000	43,843	29%

Program Funding Status of FY-2066/67 (2009/10)			
Descriptions	Target	Progress	
	Yearly Budget in'000' Rs.	Expenditure from Srawan to Kartik 66 In '000' Rs.	% Expenditure in Yearly Budget
Block Grant to COs			
Income Generation Sub Projects	1,294,183.00	154,517.00	11.94%
Infrastructure Sub Projects	489,258.00	53,065.00	10.85%
Innovative Sub-Projects	77,604.00	6,974.00	8.99%
Total Sub-Projects Block Grants (A)	1,861,045.00	214,556.00	11.53%
Partner Organization	491,298.00	113,028.00	23.00%
Consultancy Service	194,585.00	6,045.00	3.10%
Goods & Equipment, Vehicle And Furniture	35,633.00	1,434.00	4.02%
Training, Workshop, Seminar	35,000.00	4,901.00	14.00%
Incremental Operating Expenses	106,156.00	28,994.00	27.31%
Sub Total (B)	862,672.00	154,402.00	17.90%
Grand Total (A+B)	2,723,717.00	368,958.00	13.55%

Annex XVI: Ranking of Districts based on Composite Index of 28 Socio-Economic Indicators)

Overall Composite Index

National Value: 0.47269

Group A		
District	Rank	Composite Index
Kathmandu	1	1.00000
Bhaktapur	2	0.94228
Lalitpur	3	0.87434
Chitawan	4	0.71278
Kaski	5	0.70404
Kavre	6	0.64372
Palpa	7	0.61285
Rupandehi	8	0.60565
Syangja	9	0.60197
Tanahu	10	0.58173
Jhapa	11	0.55714
Ilam	12	0.55623
Dhankuta	13	0.55584
Mustang	14	0.55201
Makwanpur	15	0.54841
Baglung	16	0.53291
Parbat	17	0.52436
Kanchanpur	18	0.52062
Sankhuwasabha	19	0.50255
Manang	20	0.49750
Kailali	21	0.49575
Dang	22	0.49242
Sunsari	23	0.49167
Banke	24	0.49080
Gorkha	25	0.48985

Group B		
District	Rank	Composite Index
Nuwakot	26	0.47767
Arghakanchi	27	0.46901
Lamjung	28	0.46694
Morang	29	0.46646
Nawalparasi	30	0.46289
Surkhet	31	0.46244
Bhojpur	32	0.45165
Gulmi	33	0.44916
Myagdi	34	0.44585
Dolakha	35	0.43765
Terhathum	36	0.43174
Dhanusa	37	0.41438
Bardiya	38	0.40130
Parsa	39	0.39876
Taplejung	40	0.38708
Dhading	41	0.38682
Panchthar	42	0.38532
Sindhupalchoke	43	0.37532
Solukhumbu	44	0.36443
Udayapur	45	0.36209
Saptari	46	0.35705
Salyan	47	0.35475
Khotang	48	0.35223
Bara	49	0.35200
Okhaldhunga	50	0.34404

Group C		
District	Rank	Composite Index
Sindhuli	51	0.34369
Sarlahi	52	0.33555
Rautahat	53	0.31535
Pyuthan	54	0.31502
Kapilbastu	55	0.31194
Ramechhap	56	0.30545
Baitadi	57	0.29367
Rukum	58	0.28686
Rasuwa	59	0.28023
Darchula	60	0.27206
Mahotari	61	0.26799
Jajarkot	62	0.26047
Doti	63	0.24781
Siraha	64	0.23094
Dadeldhura	65	0.22553
Rolpa	66	0.21651
Dailekh	67	0.21272
Jumla	68	0.20902
Kalikot	69	0.15247
Dolpa	70	0.13668
Bajura	71	0.11027
Achham	72	0.10632
Bajhang	73	0.05931
Humla	74	0.00414
Mugu	75	0.00000

Source: District Level Indicators of Nepal for Monitoring Overall Development (Based on Selected Socio-Economic Indicators), National Planning Commission Secretariat, Central Bureau of Statistics, 2003

Annex XVII: Phase wise PAF Programme District Coverage

