

Poverty Alleviation Fund (PAF) Program Implementation Status

(as of 15 July 2008)

Poverty Alleviation Fund (PAF) is implementing targeted demand-driven community based program directly supporting the third pillar of Tenth Plan/ Poverty Reduction Strategy Paper-PRSP of the Government of Nepal (GoN), i.e. targeted program (Annex-I: PAF program at a glance). Presently PAF is implementing its program in 59 districts. Initially it selected six districts viz. Darchula, Mugu, Pyuthan, Kapilbastu, Ramechhap and Siraha for programme implementation. From the FY 2062/63 (2005/06 AD), 19 additional districts are selected (Achham, Baitadi, Bajhang, Bajura, Dadeldhura, Dailekh, Dolpa, Doti, Humla, Jajarkot, Jumla, Kalikot, Mahottari, Rasuwa, Rautahat, Rolpa, Rukum, Sarlahi and Sindhuli). Further, PAF initiated its program in additional 15 districts from FY 2064/065 (Okhaldhunga, Bara, Khotang, Salyan, Saptari, Udaypur, Solukhumbu, Sindhupalchowk, Panchthar, Dhading, Taplejung, Parsa, Bardiya, Dhanusha and Terhathum). With this, PAF now covers, as PAF regular program districts, all the 25 districts from Group-C and 15 districts from Group-B categorized as most deprived districts by CBS/NPC based on 28 poverty related social-economic indicators (Annex-XIV). Besides working in these regular program districts, PAF is implementing innovative pocket programme in other 19 districts as well under the special innovative window programme to capture replicable innovative initiatives to reach to the poor. The current PAF program districts are shown in Annex-II.

Program Implementation through Community Organizations: Demand-Driven Community Proposal and Direct Funding

Till date 8,423 community organizations of poor (COs) are registered in PAF (3,169 in Initial 6 Districts, 4,947 in Additional 19 Districts and rest 307 are through Innovative Window Programme Districts). Accordingly, community proposals are also prepared with participatory planning process. Out of the total registrations, PAF made agreement with 7,784 COs (3,060 are in Initial 6 Districts, 4,455 in Additional 19 Districts and rest 269 in Innovative Window Programme Districts) and community are implementing the sub-projects (A district wise details on COs registration and agreement are shown in Annex-V). Based on community demand, several different activities related to Income Generation and Infrastructure sub-projects are proposed and included in the program implementation. Income generation activities are related to agriculture, livestock, cottage industries, trade and skill based services. Similarly, infrastructure are related to micro-irrigation, link road, culvert/bridge, rope way, electricity/micro-hydro, water mill, water supply, sanitation, school and health post building. Program activities, in general, being implemented by the community are listed in Annex-III.

The agreement made with 7,784 COs amounts to NRs. 3604 M and it is in the process of disbursement to Community Accounts. Till date NRs 3,114 M is disbursed to community non-operating account and NRs 2,487 M is disbursed to community operating account. The community fund flow modality is shown in Annex-IV and details on CO agreement and disbursement status is shown in Annex-V.

In FY 2061/62 (2004/05), the agreements were made with 595 COs amounting to NRs. 240 M in the FY 2062/63 (2005/06), the agreement was made with 1,070 additional COs amounting to NRs 526M, in FY 2063/64 (2006/07), the agreement is made with 3,311 additional COs amounting to Rs. 1,347M and in this FY 2064/65 (2007/08), the agreement is made with 2,808 additional COs amounting to Rs. 1,491 M.

The community sub projects are in different stages of implementation. Second level of demand and proposals are also started receiving upon completion of first sub projects. Communities also start to build network of COs and co-operatives. Communities have undertaken 7,621 Income Generation related sub-projects and 1,484 Infrastructure related sub-projects till date. A list of completed sub-projects and physical achievement of sub-projects are provided in Annex-VI.

The COs and agreement with COs consist of innovative pocket program in 10 additional districts. Details on innovative program is provided in Annex-VII.

Additionally, PAF considered financing 12 out of 20 winning innovative proposals of Nepal Development Market Place (NDM) -World Bank 2005. Agreements are made with those 12 POs that amounts NRs. 16M to work in 25 VDC of Bajura, Dolakha, Kathmandu, Myagdi, Parsa, Saptari, and Syangja districts serving about 8,999 poor households (Annex-VII). Till date, NRs. 14 M is disbursed. Further PAF monitored the World Bank financed remaining 8 NDM projects in Dang, Khotang and Tanahun districts.

Recently, PAF considered financing 25 winning innovative proposals of Nepal Development Market Place (NDM)-World Bank 2008. Agreements are made with those 24 POs that amounts NRs. 32 M to work in 52 VDC of Chitawan, Dhading, Dhanusa, Dolakha, Jhapa, Kalikot, Kanchanpur, Kathmandu, Kavrepalanchok, Khotang, Lalitpur, Morang, Panchthar, Parbat, Sankhuwasabha, and Sarlahi districts serving about 3,972 poor households (Annex-VII). Till date, NRs. 14 M is disbursed and implementation is in different stages.

Facilitation and Community Support through Partner Organizations

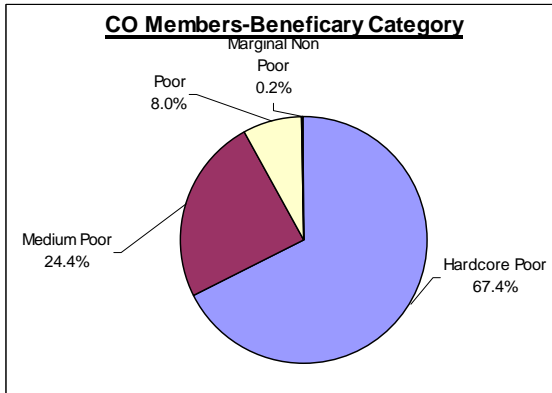
Partner Organizations (POs) selected by PAF are facilitating Community Organisations of Poor (COs). The facilitation being carried out by POs are in organising COs, their capacity development, planning activities, carryout detailed feasibility, survey design & estimates, and proposal preparation during preparatory phase, and provide technical assistance and monitoring feedback support during implementation phase. As such, 245 Partner Organizations (POs) are working with communities (67 for Initial 6 Districts, 129 for Additional 19 Districts, 12 for Innovative Window program and 37 for Innovative NDM-World Bank Programme). 12 POs are terminated due to their poor performance. Till date POs facilitated in total 865 VDCs (281 in Initial 6 Districts, 447 in Additional 19- Districts, 60 in Innovative Window Programme Districts and 77 in NDM-World Bank Programmes) and Community Organizations of Poor (COs) are working in those VDCs. Till date 296,013 households (HHs) are served (106,599 HHs in Initial 6 Districts, 165,196 HHs in Additional 19 Districts, 11,247 in Innovative Window Program Districts and 12,971 in NDM-World Bank Programme). A detailed district wise PO, COs and coverage are shown in Annex-VIII.

Reaching out to Excluded Poor Community Beneficiaries and Social Inclusion

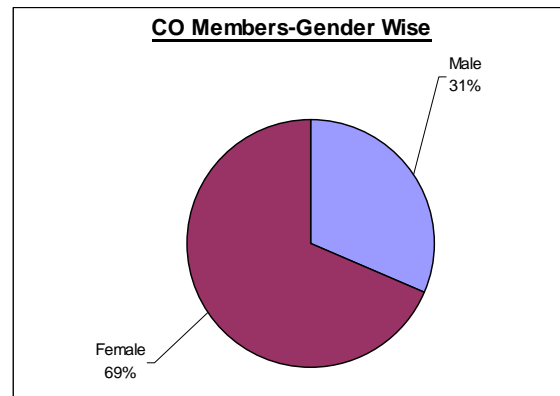
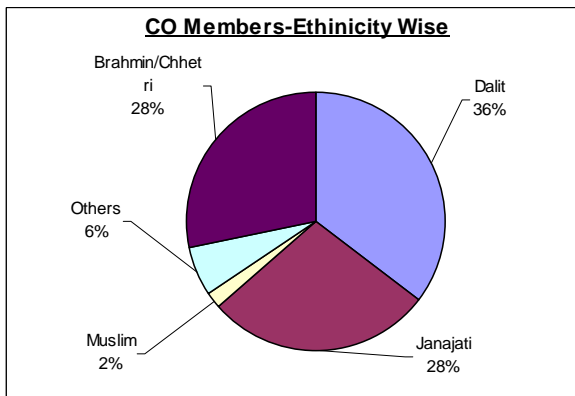
PAF has taken the strategy to support the idea that poor community should be organized themselves to prepare, implement and manage their program and they should be in the driving seat, with decision making authorities. A social inclusion strategy to reach out to the poor specifically poor women, dalit and janjati are taken (Annex-IX).

Participatory social assessment and community well- being ranking process identified the poor community members as primary beneficiaries at the settlement level. In an average about 58% of

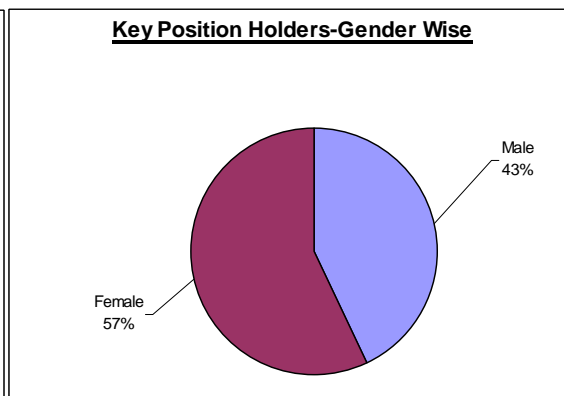
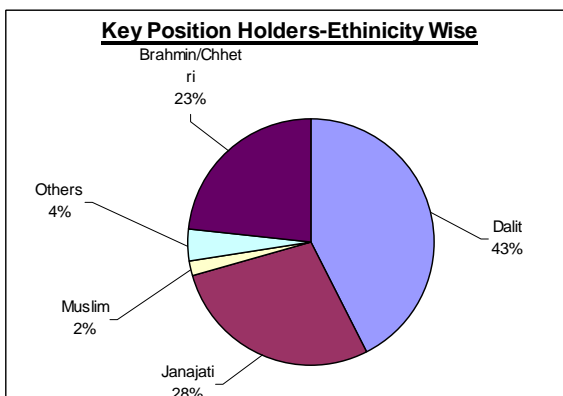
the settlement households are identified as poor households. They are organized into community organization to plan, implement and manage the sub-projects. Among beneficiaries members in Community Organizations of Poor (COs), 67.4% members falls under hardcore poor category (food sufficiency less than 3 months among criteria fix by community), 24.4% members falls under medium poor category (food sufficiency more than 3 months but less than 6 months among criteria set by the community), 8.0% members falls under poor category (food sufficiency more than 6 months but less than a year among criteria set by the community) and 0.2% members falls under marginal Non-poor Category.



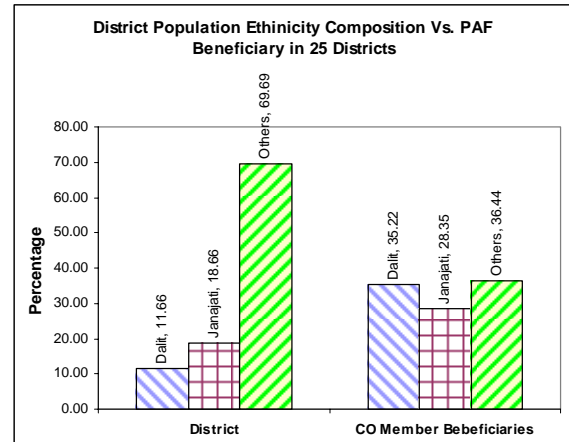
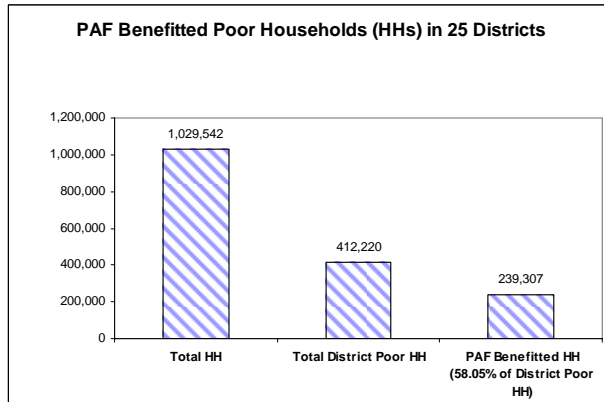
Likewise, CO member households constitutes 36% dalit, 28% janajati, 2% Muslim, 28% Brahmin/Chhetri and 6% Other ethnicity. Gender wise, 69% are female members in Community Organizations (COs).



Similarly, the key position holders in the community organisation such as President, Treasurer, Secretary constitutes, 43% Dalit, 28% Janajati, and 2% Muslim and 23% Brahman/Chettri, and 4% other ethnicity. Gender wise, 57% are female key position holders in Community Organizations of Poor (COs).



When percentage beneficiary of PAF by ethnicity is compared with district percentage ethnicity composition as shown in the graph below it is clear that PAF is focusing on socially excluded group such as Dalit and Janajati. In an overall, PAF till now benefited 58% of poor households in 25 districts (239,307 Poor HHs out of 412,220 poor HHs in 25 districts). PAF is working in 57% of VDCs in 25 regular PAF districts (728 VDCs out of 1275).

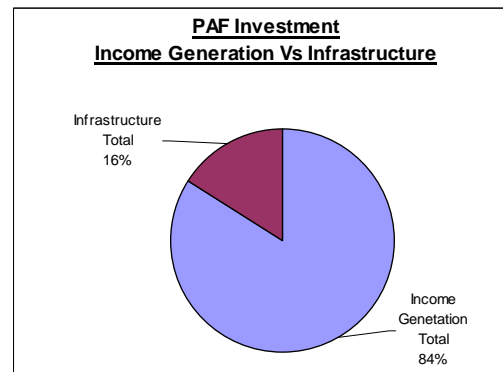
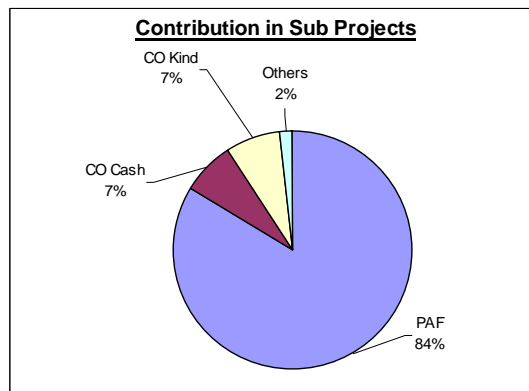


All five districts of the Karnali zone are covered by the program. Till date program reached 98 VDCs i.e. 73% of 134 VDCs in Karnali and benefited 35,800 poor households (Annex-X).

Program covered five districts in Tarai (Siraha, Mahottari, Sarlahi, Rautahat, Kapilbastu) and benefited 66,479 HHs covering 198 VDCs (i.e. 46 % of poor HHs and 43% of VDCs). Out of 59 border VDCs in those five districts, PAF program covered 17 VDCs (i.e. 29%) and benefited 6,674 HHs (i.e. 24% of HHs in border VDCs) (Annex-XI). Further, innovative pocket program is running in Morang, Kanchanpur and Chitwan districts. It reached additional 5000 poor households in 16 VDCs in those districts.

Program Cost Sharing

PAF is investing 84% of the total sub-project cost. Community sharing is 14% (7% in Cash and 7% in Kind) of the total sub-project costs whereas other organizations mainly VDC/DDC are sharing 2% in total sub-project cost. In Income Generating sub projects, community is sharing 9% in cash and 4% in kind whereas in Infrastructure sub projects, it is 1% in cash and 23% in kind.



Out of the total PAF investment, 84% is in Income Generating sub-projects and 16% is in Infrastructure sub-projects. The sub-project activities undertaken are shown in Annex-III.

Community Institutional Development

Community institutionalization process is also emerging in some of the pilot districts where community felt need to federate themselves for certain function. Multi-purpose co-operatives, co-operatives for single function and federation of COs are formed as per communities felt need. The following table shows institutions formed and objectives of those institutions.

District	Type Institutions Formed (Federations/Cooperative)	Specific objectives/activities
Mugu	Cooperative: One cooperative has been registered in Shrawan 2064, in Joint efforts of 11 COs members of three VDCs, namely Shreenagar, Karkiwada, Pina	To provide agro-vet services to its members To establish hatchery and make available chicks in district for its members To run dairy at district headquarter collecting milk from its members.
Siraha	Federation 6 COs in Bishnupurkalti VDC has been federated to run a chilling Center COs in Dhodhana and Bhadaiya VDCs Cooperative 3Cos in Muskar VDC is in process to register cooperative.	To establish & run Chilling Center for marketing of milk products from its member To run Breeding Center To run saving credit and provide technical services to its members
Kapilvastu	Cooperative: One cooperative has been registered in joint efforts of COs at Dhankauli and Rajpur VDCs. Federation 357 buffalo raising farmers of five VDCs namely Ganeshpur, Biddhyanagar, Bhagamanpur, Sirshihawa and Ramnagar have been federated and formed. Shivam Dugdha Utpadak Community Organization	Multipurpose cooperative, it is in process to run agro-vet services and collection & marketing of milks from its members Collection, Chilling and produce milk product as well as marketing. (Plant and Machinery of Chilling Center is under installation) To run community insurance scheme for its members.

Collaboration in sub-project Implementation at districts

The collaborative efforts are going on to supplement and complement with different program running in the district to bring discernible impact in considerably less time. There are several examples of collaboration with line agencies, local governments and donor agencies to implement the program and sub-projects in the communities at district level. Some of the collaboration efforts are shown in the table provided in Annex-XII.

Several MoU has also been signed with different organizations at central level to facilitate different task as well as to facilitate collaboration in implementation of sub-projects at community level.

- MoU with Rastriya Banijya Bank (RBB), as a PAF development partner, is renewed and made arrangements with Nepal Bank Limited in 5 districts (Dolpa, Jajarkot, Rasuwa, Rolpa and Rukum) where RBB branch do not exists for enabling efficient fund flow to the accounts of community organizations of the poor.
- MoU is signed between South Asia Foundation, CTEVT and Dhulikhel Hospital in order to utilize Madanjeet Singh Scholarship for ANM in PAF pilot districts
- MoU is signed with Alternate Energy Promotion Centre (AEPC) on August 10, 2007 for mutual collaboration in PAF and AEPC program area to enable poor access to micro-hydro and other alternative energy projects
- MoU is signed with WINROCK on October 27, 2007 for the implementation of ICT GDA project in Bajhang and Achham districts.
- MoU is signed with ROTARY Club and Kavre Health Training Institute for utilizing ROTARY ANM Scholarship and follow-up support program in PAF districts.
- MoU is signed with Winrock International's (WI) Renewable Energy Project Support Office (REPSO) Nepal on April 21, 2008 to promote Jatropha oil based pump irrigation systems for improving income generation of poor farmers through increased agricultural productivity in Siraha district.
- MoU is signed between Department of National Parks and Wildlife Conservation (DNPWC) and PAF on May 2, 2008 in order to collaborate and enable to implement PAF program in protected areas.

An understanding is signed by PAF in a meeting at Ministry of Finance with Ministry of Local Development (MLD) to further enhance co-ordination with Local Bodies at district on April 1, 2008.

Further PAF is taking initiative to collaborate with Ministry of Education and Centre for Non-Formal Education; Department of Livestock and Department of Agriculture under the Ministry of Agriculture and Co-operatives. Similarly effort is going on to collaborate with Department of Irrigation; Leasehold Forestry and Livestock Programme-Department of Forest; World Food Program (WFP); and USAID project Education for Income Generation.

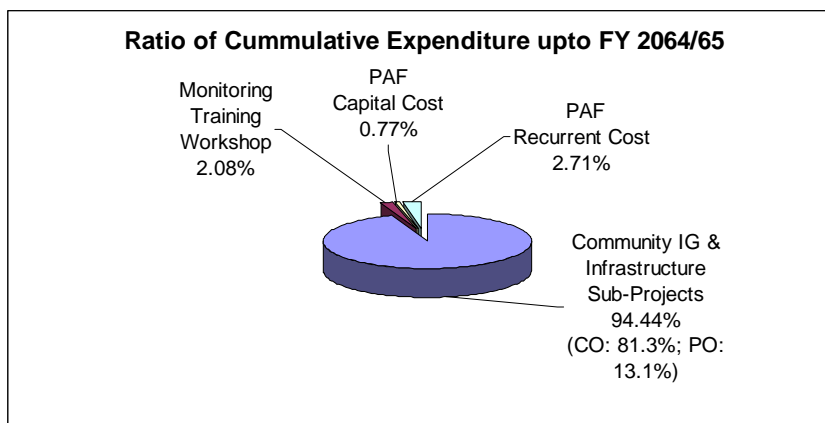
Budget Expenditure

The total expenditure in FY 2060/61 (2003-04), FY 2061/62 (2004-05), FY 2062/63 (2005-06) and FY 2063/64 (2006-07) and FY 2064/65 (2007-08) were NRs.5,781,379, NRs. 247,322,606, NRs. 493,505,927, NRs 1,210,296,385 and 1,875,484,714.14 respectively. Last FY 2064/65 (2007-08), the expenditure is NRs 1,875,484,714.14 which is 95.17% of total budget of NRs 1,970,723,000.00 (Annex XIII).

Total expenditure of PAF till FY 2064/65 is NRs. 3,832,391,010.82.

Out of the total PAF expenditure of NRs. 3,832 M till FY 2064/65 (2007-08), 94.44% was in Program Implementation

through CO & PO (CO: 81.3%, PO: 13.1%), 2.08% in Monitoring, Training, Studies and Other Program Support, 0.77% in capital investment for PAF and 2.71% in PAF operation/ recurrent cost. Out of total expenditure 97.03% was from World Bank IDA Grant and rest 2.97% from GoN Source.



Currently the PAF Project is funded by IDA Grant with US\$ 40.0 M for four years till January 2009. This constitutes initial US\$ 15.0 M and additional US\$ 25.0 M. IDA disbursement to this PAF project till date is 75% i.e. equivalent to about US\$ 31.37M (equivalent to about US\$ 14.68 M out of initial US\$ 15 M and equivalent to about US\$ 16.69 M out of US\$ 25 M).

IDA grant for PAF Project II of US\$ 100.0 M has been made effective on January 31, 2008. Likewise, IFAD grant for PAF II of US\$ 4 M is effective from July 31, 2008.

Lessons and Challenges

There is a high demand for the programme as the sub-projects originate at grass-root levels. Communities have demonstrated their keen interest to undertake the programme and make necessary contributions. The current challenge is to make a trade-off between rapid implementation and institution building enhancing the technical capability of the community organizations. In view of the wide varieties of activities undertaken within the sub-project, the challenges faced for sustainability of the sub-projects are:

- Linkage with market for sustaining income-generating activities.
- Providing appropriate technology support for different activities including linkages with existing service structure
- Availing Insurance Safety-Net particularly for livestock
- Exploring an alternative to livestock based activities for landless poor
- Building Community Capacity to Manage Revolving Fund and Operate the Sub-Projects
- Raise awareness of community through functional literacy

While working towards above challenges, it is inevitable to work with diversified groups of poor

communities supporting each other and network for linkages and collaboration with other programmes and line agencies to support communities in different areas of strength of these programmes. Further, legal institutionalization of Community Organizations through coalition or formation of functional co-operatives and establishment of strong linkages with VDC/ DDC are also important for sustainability and long-term support to these community groups.

PAF is working with its exit strategy focusing on its strategic thrust to enable community to go to sustained path to get out of poverty within a stipulated 5-6 years of time.

Monitoring, Research and Development needs to be strengthened further to support the implementation including capacity building of main actors i.e. CO, PO, Local Bodies and PAF.

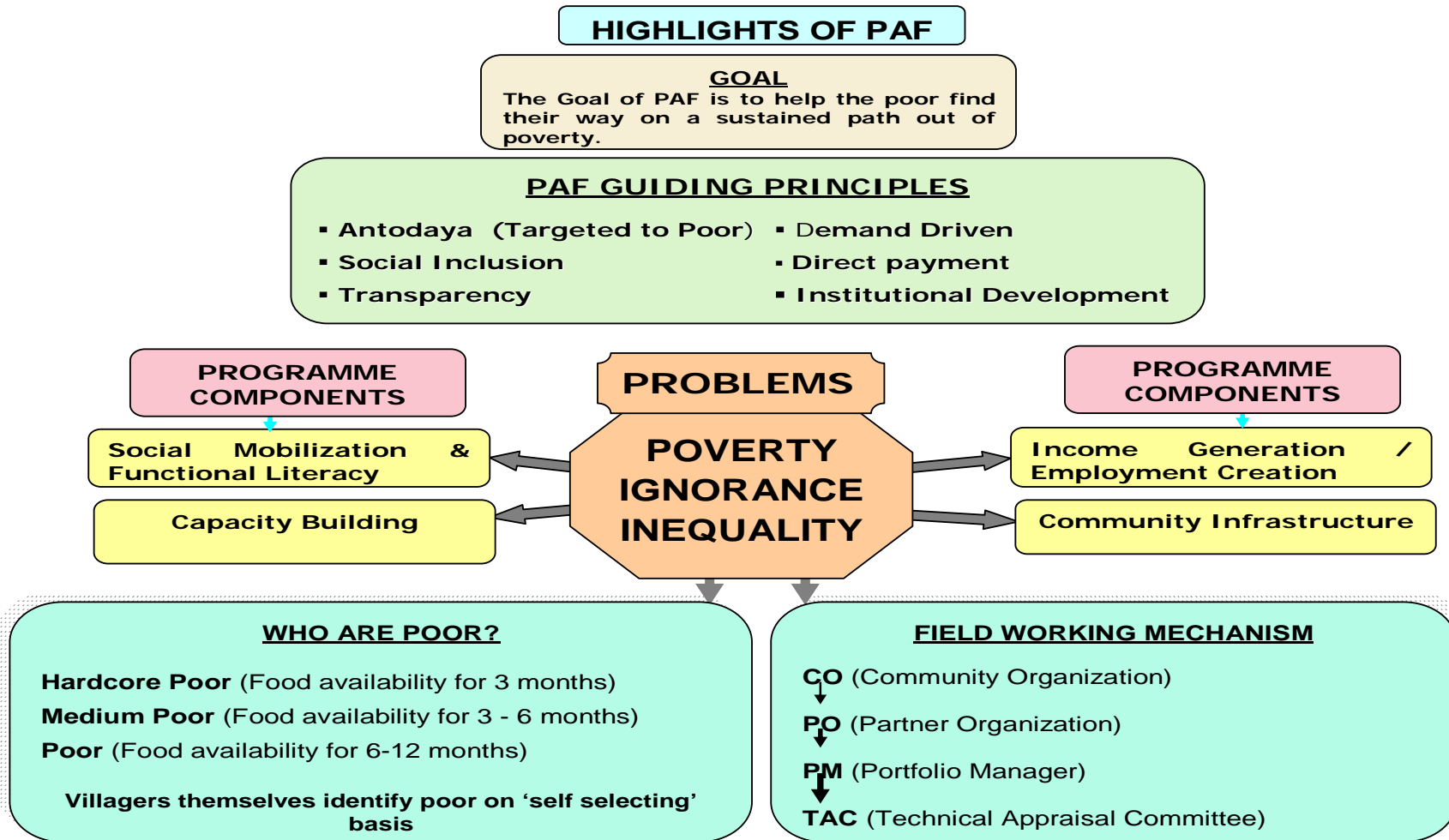
Based on lessons learned, PAF will take following strategies:

- Expansion of PAF program in new VDCs and districts
- Institutionalization of Community Organizations as co-operative or other forms of institution as per their decision and link with financial institution and markets where program is already in implementation
- Capacity Building of community organization, partner organization and PAF
- Co-ordination and collaboration with other agencies to bring discernible impact in considerably less time
- Strengthen monitoring evaluation based feedback and learnings
- Advocacy of PAF in order to spread its knowledge and working modalities

Future Program District Coverage Plan

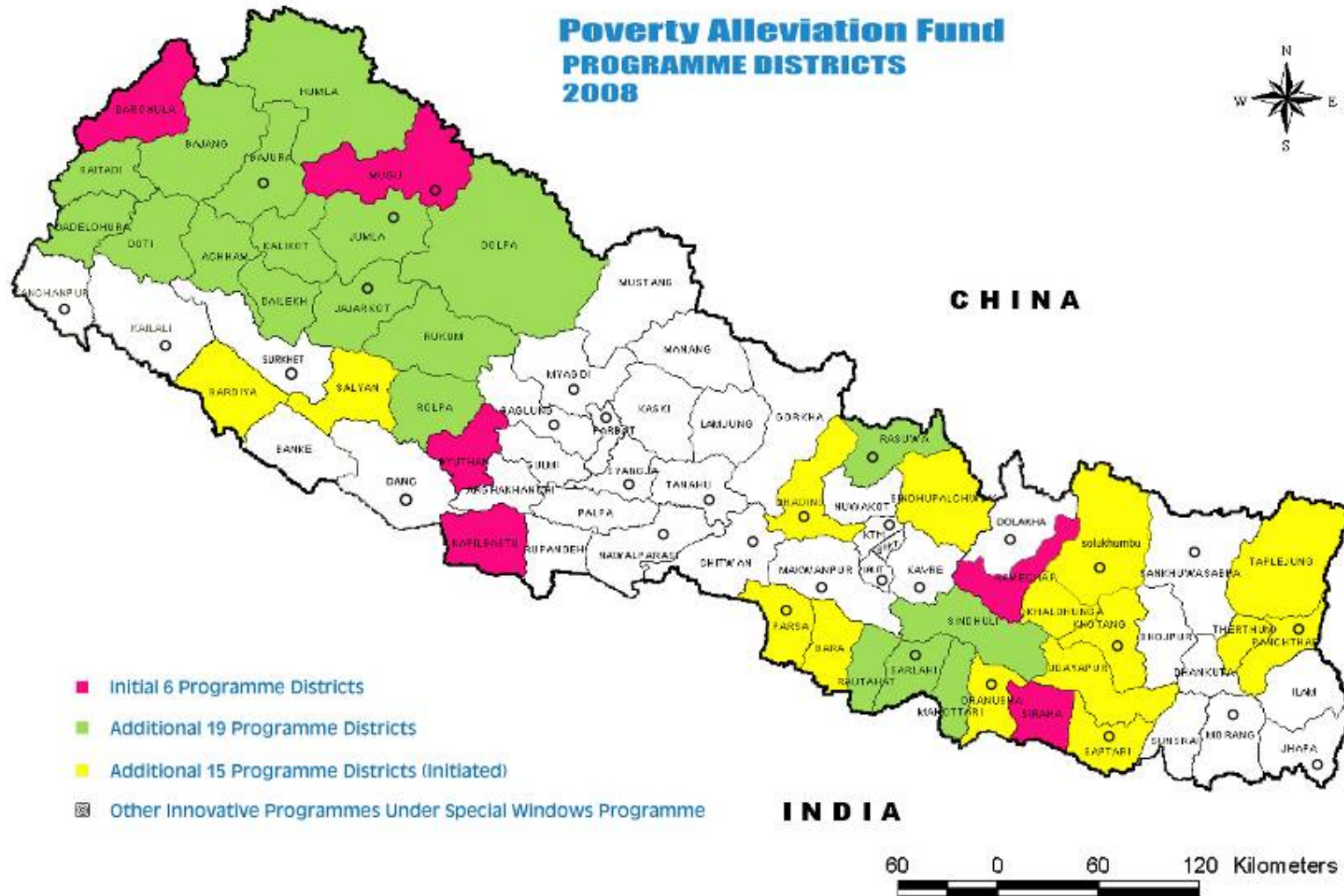
PAF has planned to cover all 75 districts in future. Program expansion in additional 15 districts is initiated in the Fiscal Year 2064/65 (2007/08) and identification of Partner Organization (POs) is ongoing. Program will be expanded in additional 15 districts in FY 2065/66 (2008/09) from the list of deprived districts categorized by CBS/NPC based on 28 poverty related socio-economic indicators (Annex-XIV). Remaining 20 districts will be covered through poverty pocket approach. The phasewise PAF program district coverage plan are shown in the map in Annex-XV.

Annex I: PAF Program at a Glance



Poverty Alleviation Fund is created by the Government of Nepal under separate PAF Act as an autonomous institution to implement targeted program

ANNEX-II: PAF Programme Districts



Annex III: Sub Project Activities

INCOME GENERATION

Agriculture

- Agro Forestry
- Apple Farming
- Asparagus Farming
- Badam Farming
- Banana Farming
- Bee Keeping
- Cardamom Farming
- Cereal Crops Farming
- Dhaki Okhal
- Fishery
- Fruits Farming
- Ginger Farming
- Green House
- Herbal Nursery
- Herbs Farming
- Land Management
- Lokta Farming
- Maize Cultivation
- Mushroom Farming
- Nursery
- Off Season Veg Farming
- Orange Farming
- Power Treller (Tractor)
- Rice Farming
- Spray Machine
- Sugarcane
- Taar Bar
- Tree Contract
- Vegetable Farming

Livestock

- Animal Insurance
- Badel Raising
- Buffalo Raising
- Buffalo Shade
- Chicken Cage Construction
- Cow Raising
- Cow Shade
- Dairy Firm
- Donkey Raising
- Duck Raising
- Duck, Pigeon, Chicken Shade
- Fodder Management
- Goat Raising
- Goat Shade
- He Buffalo Raising
- Horse Raising
- Mule Raising
- Ox Raising
- Pari Raising
- Pasture Land Support
- Pig Raising
- Pig Shade
- Pigeon Keeping
- Pigeon Raising
- Poultry
- Rabbit Keeping
- Sheep Raising
- Veterinary Equipment
- Yak Raising

Manufacturing

- Agri Tools
- Bag Making
- Bread Udyog
- Candle Udhoyog
- Carpet
- Chiura Udyog
- Clay Utensils
- Cloth Udhoyog
- Dalmoth Udhoyog
- Dhaka Weaving
- Doko Namlo Rope
- Essence Making
- Farma
- Fertilizer Production
- Fiber Material Making
- Fruit Purify Centre
- Furniture/Carpentry
- Garment
- Ice Cream, Kulfi, Chaat
- Juice Production
- Madal
- Masala Udyog
- Metal Products Production
- Micro Enterprise/Cottage Industry
- Misc. IG
- Muda Making
- Nanglo Making
- Nepali Paper Udhoyog
- Noodles Making
- Pickle Udhoyog
- Potato Chips Making
- Pottery (Manufacture)
- Radipakhi Weaving
- Rope Making
- Shoe Making
- Soap Industry
- Stamp Making Shop
- Sweater Udyog
- Tapari
- Thanka
- Tile Making Industry
- Titaura
- Umbrella Udyog

Service

- Agrovat
- Auto Rickshaw
- Band Baaja
- Beauty Parlour/Saloon Service
- Bus/Truck Maintenance
- Cart Service
- Communication/PCO Service
- Computer Maintenance Centre
- Cycle Maintenance
- Dhalan Pharma
- Editing Classroom
- Goods Transportation
- Hotel
- House Wiring
- Improved Aran
- Laundry
- Lohari Giri
- Loud Speaker
- Masson Instruments
- Mechanical Workshop
- Mill (Kutani Pisani)
- Motorcycle Maintenance
- Painting
- Photo Studio
- Plumber Instruments
- Radio TV Maintenance

- Restaurant
- Rickshaw
- Rickshaw Maintenance
- Screen Print
- Sewing Machine
- Sheltering Business
- Solar Repairing & Maintenance Shop
- Tailoring
- Tea Shop
- Tent House
- Thela Gada
- Transportation Service
- Tripal
- Vehicle Maintenance
- Washing Machine
- Welding Shop

Trading

- Aggregate Business
- Agricultural Input Business
- Animal Business
- Bamboo Business
- Bhujija Shop
- Book Shop
- Chuna Business
- Cloth Business
- Cooperative Shop
- Dry Fish Business
- Egg Business
- Electric Shop
- Fancy Shop
- Fish Business
- Fruits And Vegetable Shop
- Fruits Shop
- Galla Business
- General Stores
- Gold & Silver Shop
- Herbs Business
- Jewellery Shop
- Kawadi Business
- Kerosene Shop
- Leather Business
- Manihara Business
- Meat Shop
- Medicine Shop
- Metal Business
- Milk Business
- Mobile Retail Shop
- Paan Shop
- Plastic Shop
- Pottery Shop
- Purse, Belt Shop
- Retail Business
- Rice Business
- Seeds Business
- Shoe Shop
- Stationary Shop
- Sweet Shop
- Thela Business
- Tobacco Business
- Utensil Shop
- Vegetable Shop
- Veterinary Shop
- Watch Shop
- Wood Business

COMMUNITY INFRASTRUCTURE

- Bio Diesel Expeller Machine
- Boring Pump
- Building
- Canal
- Dhikki Pump
- Ghatta
- Irrigation
- Irrigation Rehabilitation
- Milk Chilling Centre
- Plastic Pond
- Pond
- Pond Maintenance
- Pump Set/Motor
- Rice Mill
- Road
- Road Maintenance
- Solar System
- Water Pump
- Water Supply

CAPACITY BUILDING

- Aamchi Training
- Account And Store Mgt Training
- Account Keeping Training
- Agro Forestry Training
- Agrovet Training
- Animal And Market Dev Training
- Animal Health Training
- Animal Husbandry Training
- Animal Insurance Training
- Animal Raising Training
- Asparagus Management Training
- Asparagus Marketing Training
- Awareness Training
- Banana Farming Training
- Beauty Parlour Training
- Bee Keeping Training
- Buffalo Raising Training
- Candle Making Training
- Capacity Building Training
- Cardmom Farming Training
- Carpentry Training
- Carpet Making Training
- Cemented Ring Making Training
- Child Development Programme
- Child Literacy Class
- CO Management Training
- Communication Training
- Community Awareness Training
- Compost Fertilizer Management Training
- Computer Maintenance Training
- Computer Operator Training
- Cottage Industry Training
- Cow Raising Training
- Cycle Maintenance Training
- Dairy Technician Training
- Dalmoth Making Training
- Diseases Prevention Training
- Driving Training
- Editing Training
- Electronics Training
- Environment Conservation & Food Mgmt. Training
- Fertilizer Production Training
- First Aid Training
- Fish Business Training
- Fishery Training
- Forest Management Training
- Fruits Farming Training
- Fruits Purify & Mgmt. Training

- Furniture Training
- Gender Equality & Dev. Training
- Ghatta Mgmt. Training
- Ginger Cultivation Training
- Goat Raising Training
- Goldsmith Training
- Group Management and Leadership Training
- Health and Sanitation Training
- Herbal Nursery Management Training
- Horse Raising Training
- Hotel Mgmt. Training
- House Wiring Training
- Improved Stove Training
- JTA Training
- Kitchen Gardening Training
- Leadership Training
- Literacy Class
- Market Management Training
- Masson Training
- Mechanical Training
- Medical Mgmt. Training
- Metal Work Training
- Micro Enterprise Training
- Milk Business Training
- Misc. Capacity Building
- Nanglo Making Training
- Noodles Making Training
- Nursery Management Training
- Off Season Veg Farming Training
- Organisation Management Training
- Painting Training
- Pasture Land Mgt. Training
- Photographer Training
- Pickle Making Training
- Pig Raising Training
- Plantation Training
- Plumber Training
- Pond Maintenance Training
- Poultry Training
- Power Trelle Mgmt. Training
- Project Management Training
- Pump Operation Training
- Rabbit Keeping Training
- Radio TV Maintenance Training
- Radipakhi Weaving Training
- Refreshment Training
- Repair And Maintenance Training
- Retail Business Training
- Rickshaw Maintenance Training
- Saving & Credit Mgmt. Training
- Seed Development Training
- Sewing Cutting Training
- Sheep Raising Training
- Shoe Making Training
- Skill Development Training
- Soap Making Training
- Solar Maintenance & Repairing Training
- Stamp Making Training
- Study Tour
- Sudeni Training
- Tailoring Training
- Tap Maintenance Training
- Tapari Training
- Toilet Construction Training
- Vegetable Farming Training
- Vegetable Storage Training
- Vehicle Maintenance Training
- Veterinary Training
- Water Supply Maintenance Training
- Women Health Training
- Women Skill Development Training
- Wood Craft Training

Social Service

- Birth Certificate And Citizenship Regd.
- First Aid Instruments
- Furniture For Community Building
- Health and Sanitation
- Help To Disable People
- Scholarship
- School Furniture
- Stretcher

NDM INNOVATIVE ACTIVITIES

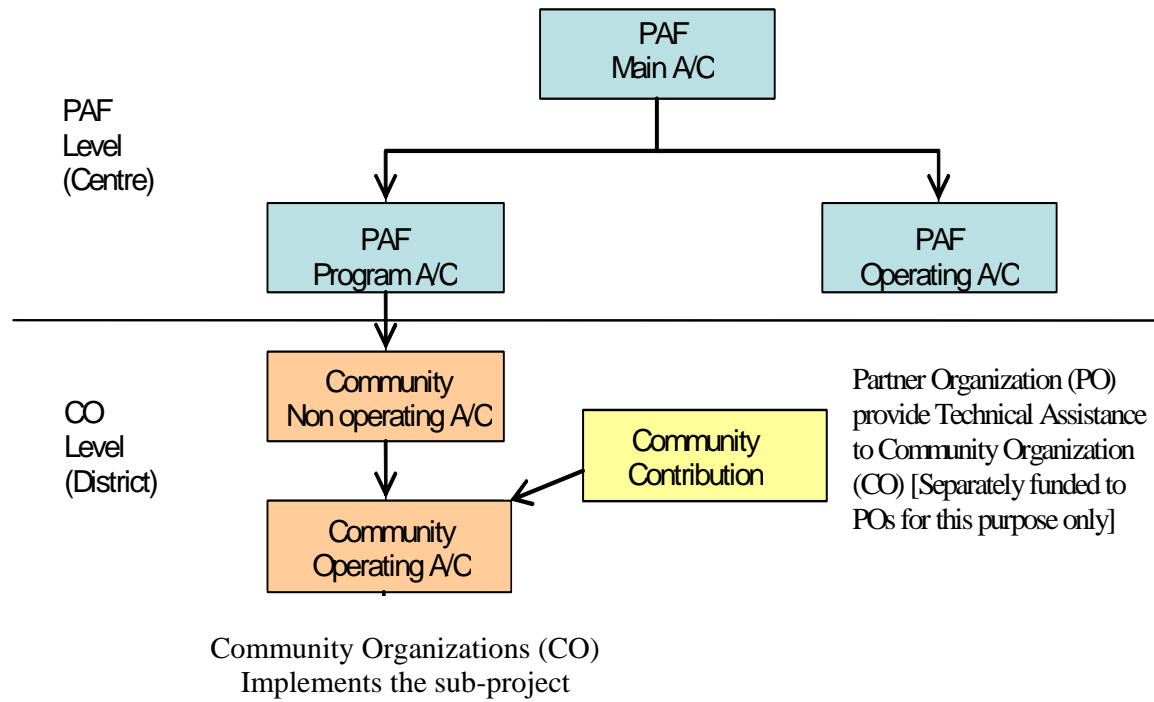
- Agro-Based Income Generation Project
- Benefiting Rural Areas through Wi-Fi Technology
- Briquette Production
- Cardamom Cultivation in Community Forest
- Fisheries for Livelihood of Women and Deprived Communities
- Healthy Women for Sustainable Development
- More Rice for Food Deficit people by using less inputs
- Orange and Coffee Production and Marketing Management
- Pigeon Keeping Project for Income Generating
- Pot-in-pot Evaporative Cooling Technology for Income Generation and Food Preservation
- Sustainable Safe Water Provision in Rural Parsa District
- Use of Local Resources for Sustainable Self-Independence

- "Light for All" Intermediate Technology for Long-Term Solution
- Allo Enterprise Resource Centre Under Women Cooperative
- Appropriate Utilization of Local Resources
- BLUE REVOLUTION
- Community-Based Tourism in Salpa-Arun Trek
- Cows Urine, Source of Employment, Income and Organic Production
- Customary Business Promotion for Livelihood Improvement
- Economic Promotion & Community Pond-Protection Project
- Electric Rickshaw Redefining Transportation in Terai
- Ghatte Bijuli-Gaun Jhilimili
- Income Generating Agriculture for Livelihood Support
- Low-cost Organic farming: A New Way of Life
- Mushroom & Organic Vegetable Production for Poverty Reductions & Peace
- Pesticides/Insecticides Used Farming will be alone if our Organic goes from School to Home
- Pesticides/Insecticides Used Farming will be alone if our Organic goes from School to Home
- Promotion of Yak Through Tourism for Livelihood of People
- Rehabilitation of Displaced Single Women (Widows)
- Resham Koya Ko Mala (Silk Garland Production) Utpadan
- Riverbank Farming for Livelihood's Promotion in Terai
- Rural Bee Resource Centre for Employment of Women
- Soap Making for Income, Conservation and Hygiene
- Technology for Access, Access For Livelihood
- Use of Local Resources for Sustainable Self-Independence
- Using Common Salt to Treat Water for Drinking
- Waste Banana Stump Based Micro Enterprise

OTHER INNOVATIVE ACTIVITIES

- Micro-Hydro Power Project in collaboration with AEPC
- Vegetable Farming on Lease Land for Landless
- Uplift Chepang community people in Dhading district
- Creating and enbaling environment to the Dalit Community--"Mukta Kamayia"
- Lift Water Supply and enhanced livelihoods of Dalits, Ethnics and indigeneous people.
- Gaun besi ropeway programme for poverty alleviation
- Area Development in 11 VDCs: Integrating livelihood improvement of trival communities (Chepang and Tamang) through agro forestry, plastic water harvesting construction and link road construction
- Bankariya and Praja/Chepang improvement by livestock, agriculture, education and other income generating program support by locally available resources
- Targeted Vocational Education through Revolving Fund
- IG activities for poverty reduction--Livestock development, vegetable farming, etc.
- IG Programmes for poverty reduction--Making women starting business on agriculture trough Organic Fariming
- Wire Bridge
- Irrigation Users' Group

Annex IV: Funds Flow Modality to Community for Sub-Project Implementation



Annex V: CO registration, agreement for sub-project and disbursement status

District	CO Registered w/ PAF (No.)	Agreement			Disbursement				
		With CO	No.	Amount (NRs.)	Non Operating		Operating		
					Sub Project No.	Amount (NRs.)	Sub Project No.	Amount (NRs.)	
Initial 6 Districts									
Darchula	558	550	643	221,247,463.81	615	198,911,307.34	572	175,398,327.20	
Kapilbastu	703	702	712	354,135,681.02	1,067	325,133,500.02	928	260,520,273.61	
Mugu	168	157	208	75,667,539.00	220	72,871,511.00	214	61,945,553.50	
Pyuthan	433	431	465	187,365,803.00	468	167,991,942.86	447	143,367,805.88	
Ramechhap	545	511	542	192,730,050.39	575	185,515,434.39	569	154,867,554.41	
Siraha	762	709	719	278,616,563.09	919	253,826,940.68	870	228,324,843.33	
6 Dist. Tot	3,169	3,060	3,289	1,309,763,100.31	3,864	1,204,250,636.29	3,600	1,024,424,357.93	
19 Additional Districts									
Achham	364	361	383	180,700,169.00	261	103,400,743.00	244	78,169,973.80	
Baitadi	462	235	274	122,650,673.14	259	105,822,318.80	258	101,101,294.19	
Bajhang	189	157	200	72,547,672.35	149	50,807,844.35	148	44,973,967.00	
Bajura	134	134	160	79,615,234.86	160	78,042,633.26	142	63,360,779.19	
Dadeldhura	222	215	216	94,146,715.99	215	75,068,385.99	192	66,846,174.00	
Dailekh	192	192	193	93,094,567.00	192	77,958,649.00	192	77,958,637.00	
Dolpa	119	119	119	57,048,364.00	117	55,905,427.60	117	47,188,277.00	
Doti	264	239	242	107,431,699.00	239	97,183,446.20	200	80,580,653.80	
Humla	259	253	271	109,974,720.00	304	114,189,828.00	271	100,964,380.00	
Jajarkot	226	205	226	147,830,154.97	209	112,132,214.03	192	83,417,804.03	
Jumla	225	221	233	156,912,235.00	276	141,660,611.00	222	80,894,747.00	
Kalikot	338	339	339	149,050,640.00	332	106,196,476.60	103	28,012,982.40	
Mahottari	382	373	375	142,055,220.00	329	109,803,930.40	278	77,113,245.90	
Rasuwa	232	204	214	85,999,678.97	205	77,046,063.00	175	62,760,203.30	
Rautahat	340	303	312	168,547,944.56	302	156,489,797.01	290	141,501,176.75	
Rolpa	49	49	49	24,524,580.00	20	11,535,250.00	20	8,026,710.00	
Rukum	199	104	105	40,616,196.50	105	37,170,404.00	81	28,745,929.00	
Sarlahi	363	364	364	135,933,013.00	364	107,655,619.80	186	53,684,403.30	
Sindhuli	388	388	431	204,775,429.02	397	176,013,006.49	329	133,635,661.32	
19 Dist. Tot.	4,947	4,455	4,706	2,173,454,907.36	4,435	1,794,082,648.53	3,640	1,358,936,998.98	
25 Dist. Total	8,116	7,515	7,995	3,483,218,007.67	8,299	2,998,333,284.82	7,240	2,383,361,356.91	
Innovative Programme Districts									
Baglung	1	1	1	722,165.00	1	722,165.00	1	361,000.00	
Chitawan	17	17	32	7,081,784.00	21	5,790,434.00	21	5,055,989.00	
Dhading	81	56	67	25,508,062.00	66	25,027,212.00	66	25,027,212.00	
Kanchanpur	80	79	79	25,626,092.00	79	25,626,092.00	77	21,435,826.00	
Kavrepalan	1	1	1	1,735,037.00	1	1,735,037.00	1	1,561,533.00	
Lalitpur	2	2	2	6,784,220.00	2	67,84,220.00	2	6,105,798.00	
Makwanpur	62	50	52	17,228,431.52	47	13,852,576.52	41	9,110,007.02	
Morang	61	61	61	32,087,754.87	61	32,087,754.87	61	32,087,754.47	
Nawalparasi	1	1	1	1,551,248.00	1	1,551,248.00	1	1,551,248.00	
Surkhet	1	1	1	3,015,982.00	1	3,015,982.00	1	2,020,708.00	
Innovative Tot.	307	269	297	121,340,776.39	280	109,408,501.39	272	104,317,075.49	
Total =	8,423	7,784	8,292	3,604,558,784.06	8,579	3,107,741,786.21	7,512	2,487,678,432.40	

Note: Additionally, agreements are made with 37 NDM sub-projects through POs that amounts NRs 49,505,922 (NRs 16,549,491.00 NDM2005, NRs. 32,956,431 NDM2008). Out of this NRs 28,450,527.50 is disbursed till date.

Annex VI: Completed Sub Projects (1)

<u>Income Genetation</u>		<u>Infrastructure</u>	
Registered As	Special	Registered As	Special
Achham	146	Achham	5
Baitadi	147	Bajura	10
Bajhang	3	Dadeldhura	1
Bajura	62	Humla	18
Dadeldhura	133	Jumla	33
Dailekh	115	Rasuwa	6
Dolpa	72	Sindhuli	2
Doti	162		75
Humla	179	Registered As	Regular
Jajarkot	41	Darchula	89
Jumla	49	Kapilbastu	263
Kalikot	40	Mugu	50
Mahottari	149	Pyuthan	8
Rasuwa	153	Ramechhap	17
Rautahat	247	Siraha	210
Rolpa	7		637
Rukum	66	Registered As	Innovative
Sarlahi	124	Chitawan	4
Sindhuli	234	Dhading	8
	2,129	Makwanpur	12
Registered As	Regular	Morang	45
Darchula	261	Nawalparasi	1
Kapilbastu	309		70
Mugu	82		
Pyuthan	162		
Ramechhap	212		
Siraha	458		
	1,484		
Registered As	Innovative		
Chitawan	11		
Dhading	56		
Kanchanpur	13		
Makwanpur	20		
Morang	61		
	161		
Income Genetation Total	3,774		

No of Completed Infrastructures by Types

Infrastructure-IG	No.	Infrastructure-Social	No.
Boring Pump	29	Bridge	7
Dhikki Pump	53	Building	56
Ghatta	36	Culvert	32
Infrastructure Design-IG	2	Drainage	3
Irrigation	1425	Dumping Site	60
Plastic Pond	17	Electricity Line	11
Pond	2	Hume Pipe	2
Pond Maintenance	2	Infrastructure Design-Social	15
Pump Set/Motor	33	Micro Hydro	15
Rice Mill	6	School Boundary Wall	2
Road	29	School Maintenance	6
Water Pump	54	Solar System	245
<u>Total of Infrastructure-IG</u>	<u>1688</u>	Toilet	1502
		Water Supply	961
		Water Supply Maintenance	1
		<u>Total of Infrastructure-Social</u>	<u>2918</u>

Annex VI: Sub-Project Physical Achievement (2)

SN	Activities	No. of HH
A	Income Generating Activities	217,260
	Agriculture & Others	20,576
	Livestock	152,891
	Manufacturing & Others	6,391
	Service Sector	7,213
	Social Service	5,086
	Trading	25,103
B	Infrastructure	69,332
i	Infrastructure-IG	28,450
	Boring Pump	386
	Canal	97
	Dhikki Pump	645
	Ghatta	724
	Infrastructure Design-IG	39
	Irrigation	8,263
	Irrigation Rehabilitation	166
	Milk Chilling Centre	357
	Plastic Pond	107
	Pond	85
	Pond Maintenance	169
	Pump Set/Motor	319
	Rice Mill	28
	Road	16,773
	Road Maintenance	223
	Water Pump	69
ii	Infrastructure-Social	40,882
	Bridge	3,416
	Building	7,754
	Culvert	6,816
	Dumping Site	107
	Electricity Line	2,210
	Fencing	24
	Hume Pipe	232
	Infrastructure Design-Social	424
	Micro Hydro	3,571
	River Training	104
	School Boundary Wall	202
	School Maintenance	404
	Solar System	657
	Toilet	3,425
	Water Supply	11,081
	Water Supply Maintenance	455
	Capacity Building	200,681

Annex-VII: PAF Innovative Sub-projects(1)

PAF Innovative Sub-Projects

SNo.	District	Name Of PO	Sub Project Theme	No. Of Cos.	No. Of Sub Project			Total Ben. HH	PAF Investment (Agreement Amount Rs.)	
					Total	IG	Infra		PO	CO
1	Baglung	Marshyangdi Khola Micro Hydro Project Users Committee	Micro-Hydro Power Project in collaboration with AEPC	1	1		1	142		722,165.00
2	Chitwan	Multi -dimensional Agriculture For Dev. MADE Nepal	Vegetable Farming on Lease Land for Landless	41	41	29	12	1,038	1,678,450.00	10,764,147.00
3	Dhading	Forum For Community Upliftment System (FOCUS Nepal	Uplift Chepang community people in Dhading district	65	65	57	8	1,940	3,669,480.00	24,373,731.00
4	Kanchanpur	Nepal National Social Welfare Association (NNSWA)	Creating and enbaling environment to the Dalit Community--"Mukta Kamayia"	105	105	105		2,461	3,435,010.00	32,714,642.00
5	Kavrepalanchok	Santi Jana Adarsha Sewa Club (SJASC)*	Lift Water Supply and enhanced livelihoods of Dalits, Ethnicns and indigeneous people.	1	2	1	1	125	444,900.00	1,735,037.00
6	Lalitpur	Nepal Water Conservation Foundation	Gaun besi ropeway programme for poverty alleviation		0				1,382,500.00	
7	Lalitpur	Shree Sangrakshan Rajjumarga	Gaun besi ropeway programme for poverty alleviation	2	2		2	516	3,211,475.00	6,784,220.00
8	Makwanpur	Manohari Development Institute Nepal (MDI-Nepal)	Area Development in 11 VDCs: Integrating livelihood improvement of trival communities (Chepang and Tamang) through agro forestry, plastic water harvesting construction and link road construction	40	40	21	19	1,105	2,399,000.00	11,736,156.52
9	Makwanpur	Women, Childrend And Environment Dev. Center	Bankariya and Praja/Chepang improvement by livestock, agriculture, education and other income generating program support by locally available resources	19	19	19		567	1,322,790.00	6,797,315.00
10	Morang	Madan Memorial Academy Nepal	Targeted Vocational Education through Revolving Fund		0				7,839,085.00	
11	Morang	Multi Puropose Development Management Services,Nep	IG activities for poverty reduction--Livestock development, vegetable farming, etc.	28	56	28	28	861	1,852,660.00	10,759,341.00
12	Morang	Women Professional Agriculture Group	IG Programmes for poverty reduction-- Making women starting business on agriculture trough Organic Farming	33	50	33	17	1449	1,794,170.00	21,328,413.87
13	Nawalparasi	Jaladevi Community Organisation	Wire Bridge	1	1		1	705		1,551,248.00
14	Surkhet	Bheri jal Sinchai Upabhokta Samiti	Irrigation Users' Group	1	1		1	655		3,015,982.00
		TOTAL		337	383	293	90	11564	29029520	132282398.4

Annex-VII: NDM 2005 Innovative Sub-projects(2)

NDM 2005 Innovative Sub-Projects

S.No.	Name of PO	District	Sub-Project	Agreement Date	Total Project Cost (Rs.)
1	District Agriculture Development Office, Morang	---	More Rice for Food Deficit people by using less inputs	06-Jul-05	1,250,000.00
2	District Coffee Producers Association	Syangja	Orange and Coffee Production and Marketing Management	06-Jul-05	1,397,440.00
3	Environment And Public Health Organization	Parsa	Sustainable Safe Water Provision in Rural Parsa District	06-Jul-05	1,400,000.00
4	FECOFUN, Shesh Narayan Range Post Working Committee	Kathmandu	Briquette Production	06-Jul-05	900,000.00
5	Fewa Matsya Byawasayi Samitee	---	Fisheries for Livelihood of Women and Deprived Communities	06-Jul-05	1,050,000.00
6	GIFT - NDM	Bajura	Use of Local Resources for Sustainable Self-Independence	06-Jul-05	1,400,000.00
7	Global Multiple Cooperative Organization	Saptari	Pigeon Keeping Project for Income Generating	06-Jul-05	1,396,997.00
8	Himanchal Higher Secondary School	Myagdi	Benefiting Rural Areas through Wi-Fi Technology	06-Jul-05	1,387,000.00
9	Multidis. Inst. For Livelihood Enhan. & ..(MILAN)	Myagdi	Healthy Women for Sustainable Development	06-Jul-05	1,133,750.00
10	Nucleus For Empowerment Through Skill Transfer	Syangja	Agro-Based Income Generation Project	06-Jul-05	1,343,229.00
11	Salt Trading Corporation Limited	Kathmandu	Pot-in-pot Evaporative Cooling Technology for Income Generation and Food Preservation	06-Jul-05	1,400,000.00
12	Suspa Educational Development Committee	Dolakha	Cardamom Cultivation in Community Forest	06-Jul-05	700,000.00
				Total	14,758,416.00

Annex-VII: NDM 2008 Innovative Sub-projects(3)

NDM 2008 Innovative Sub-Projects

S.No.	Name Of PO	District	Sub-Project	Agreement Date	Total Project Cost (Rs.)
1	Center For Agriculture Technology & Training (CATT)	Kavrepalanchok	Mushroom & Organic Vegetable Production for Poverty Reductions & Peace	01-Jul-08	1,500,000.00
2	Center For Renewable Energy (CRE)	Morang	"Light for All" Intermediate Technology for Long-Term Solution	02-Jul-08	1,500,000.00
3	Converge Design Consultancy	Lalitpur	Low-cost Organic farming: A New Way of Life	29-Jun-08	1,500,000.00
4	Dapcha Sericulture Development Program	Kavrepalanchok	Resham Koya Ko Mala (Silk Garland Production) Utpadan	30-Jun-08	1,467,000.00
5	Environment Camps For Conservation Awareness (ECCA)	---	Using Common Salt to Treat Water for Drinking	01-Jul-08	1,500,000.00
6	FOCUS Nepal	Dhading	Economic Promotion & Community Pond-Protection Project	30-Jun-08	1,496,700.00
7	Gramin Urja Tatha Prabidhi Sewa Kendra P.Ltd(RETSC)	---	Ghatte Bijuli-Gaun Jhilimili	02-Jul-08	1,500,000.00
8	GRID Nepal	Chitawan	Technology for Access, Access For Livelihood	01-Jul-08	1,500,000.00
9	Hill Development And Conservation Group, Nepal	Solukhumbu	Community-Based Tourism in Salpa-Arun Trek	30-Jun-08	1,500,000.00
10	Himali Community Support Group_NDM	Mugu	Himalayan Community Innovation Project	18-Nov-08	1,475,000.00
11	Hoste Hainse	---	Pesticides/Insecticides Used Farming will be alone if our Organic goes from School to Home	01-Jul-08	1,500,000.00
12	Inteegrated Community Development Movement,(ICDM)	Dolakha	Promotion of Yak Through Tourism for Livelihood of People	02-Jul-08	1,450,000.00
13	Janaki Women Awareness Society (JWAS)	Dhanusa	Riverbank Farming for Livelihood's Promotion in Terai	01-Jul-08	1,099,231.00
14	Karnali Rin Tatha Rin Sahakhari Sanstan	Jhapa	Appropriate Utilization of Local Resources	30-Jun-08	1,500,000.00

15	Kathmandu University	Morang	Electric Rickshaw Redefining Transportation in Terai	01-Jul-08	600,000.00
16	Kaushila Foundation For Peace & Innovative Initiat	Lalitpur	BLUE REVOLUTION	29-Jun-08	1,141,800.00
17	Khotang Development Forum(KDF)	Khotang	Rural Bee Resource Centre for Employment of Women	30-Jun-08	1,495,000.00
18	NESDO Nepal	Parbat	Customary Business Promotion for Livelihood Improvement	01-Jul-08	1,500,000.00
19	Research And Development Nepal	Sankhuwasabha	Allo Enterprise Resource Centre Under Women Cooperative	30-Jun-08	1,500,000.00
20	Rural Service Society-NDM	Sarlahi	Cows Urine, Source of Employment, Income and Organic Production	01-Jul-08	1,000,000.00
21	Sana Kishan Sahakari Sanstha Ltd..	Morang	Waste Banana Stump Based Micro Enterprise	30-Jun-08	1,320,000.00
22	SUPPORT Foundation	Kanchanpur	Income Generating Agriculture for Livelihood Support	30-Jun-08	1,497,000.00
23	Sustainable & Equitable Development Academy (NDM)	Kalikot	Soap Making for Income, Conservation and Hygiene	30-Jun-08	984,000.00
24	Tanak Nath Sewa Samanj	Panchthar	Pesticides/Insecticides Used Farming will be alone if our Organic goes from School to Home	01-Jul-08	1,407,700.00
25	Women For Human Rights (WHR) Single Women Group	Kathmandu	Rehabilitation of Displaced Single Women (Widows)	01-Jul-08	1,498,000.00
				Total	34,431,431.00

Annex-VIII: POs, COs and Coverage

District	No. of Working POs	Total VDC + Municipality in District	PO Committed No. of VDC	CO Working VDC	Sub Proj. No.		Beneficiary	
					IG	Infra	CO Member	Total Beneficiary
Initial 6 Districts								
Darchula	10	41	41	41	469	182	14,048	18,614
Kapilbastu	11	78	59	57	700	384	19,805	29,257
Mugu	6	24	22	22	134	90	6,810	9,232
Pyuthan	12	49	37	38	420	54	13,577	14,095
Ramechhap	11	55	50	41	503	74	13,436	15,055
Siraha	17	108	72	54	691	246	17,539	20,346
6 Dist. Tot	67	355	281	253	2,917	1,030	85,215	106,599
19 Additional Districts								
Achham	8	75	35	28	365	18	12,026	14,934
Baitadi	7	63	30	31	218	56	9,809	9,906
Bajhang	3	47	18	19	128	73	5,276	6,353
Bajura	4	27	20	20	134	26	5,119	6,196
Dadeldhura	9	21	18	16	215	1	6,394	6,275
Dailekh	5	56	25	25	193		7,345	7,345
Dolpa	3	23	12	12	119		3,714	3,712
Doti	5	51	26	21	239	3	7,818	7,899
Humla	5	27	24	22	253	18	6,490	6,526
Jajarkot	8	30	26	26	219	7	8,436	17,182
Jumla	7	30	21	20	220	76	8,894	9,116
Kalikot	6	30	22	22	339		9,923	9,882
Mahottari	12	77	23	22	375		9,664	9,331
Rasuwa	7	18	15	15	206	9	6,181	6,513
Rautahat	9	97	44	28	298	21	8,773	12,091
Rolpa	1	51	4	4	49		1,547	1,538
Rukum	3	43	12	12	105		3,158	3,171
Sarlahi	17	100	40	37	364		10,698	10,589
Sindhuli	10	54	32	24	384	47	14,107	16,637
19 Dist. Tot	129	920	447	404	4,423	355	145,372	165,196
25 Dist. Tot	196	1,275	728	657	7,340	1,385	230,587	271,795
Innovative Programme Districts								
Baglung	0	60	0	1		1	13	142
Chitawan	1	38	5	5	20	12	812	803
Dhading	1	50	6	6	57	10	1,919	2,270
Kanchanpur	1	20	20	8	79		1,893	1,956
Kavrepalanchok	1	90	1	1	1	1	11	125
Lalitpur	2	42	4	2		2	416	516
Makwanpur	2	44	18	14	36	16	1,335	1,765
Morang	3	65	4	3	61	45	2,301	2,310
Nawalparasi	0	74	0	1		1	11	705
Surkhet	0	48	0	1		1	9	655
Siraha	1		2					
Innovative Total	12	531	60	42	254	89	8,720	11,247
Innovative Programme Districts								
NDM-2005	12		25	25	10	2		8,999
NDM-2008	25		52	52	17	8		3,972
NDM Total	37	0	77	77	27	10	0	12,971
Total =	245	1,806	865	776	7,621	1,484	239,307	296,013

Note: 12 POs worked in 25 districts were dropped due to poor performance and inability to work.

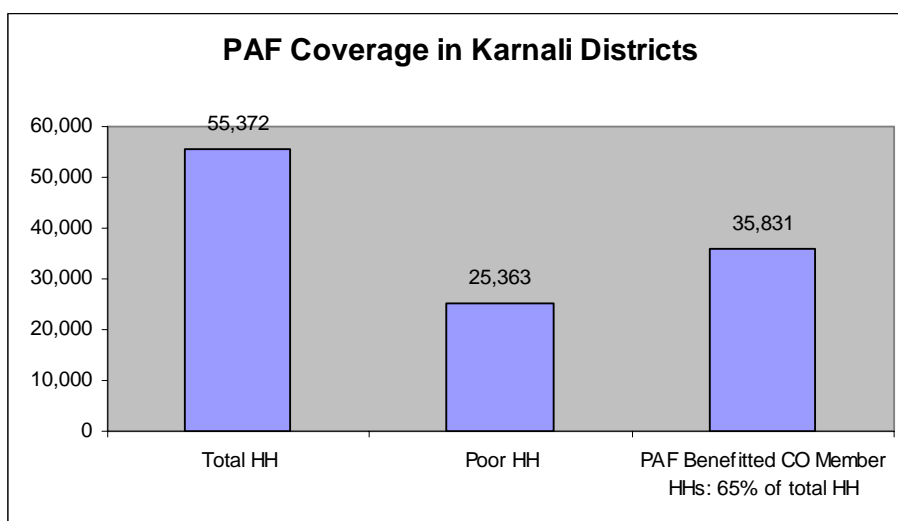
Annex- IX: Social Inclusion Strategy Reaching the Poor

<u>Targeting Sequence</u>	<u>Key Actor</u>	<u>Tools/Methods</u>
Districts	PAF Management	District Level Indicators (CBS/NPC)
↓		
VDCs	PAF Management Portfolio Manager	VDC Prioritization DDC-Level Stakeholders' Consultation
↓		
Wards	Partner Organization (PO)	VDC-Level Interaction
↓		
Settlements	Partner Organization (PO) Community	Ward-Level Interaction Settlement-Level Sensitization Settlement Social Mapping Social Assessment/ Wellbeing Ranking
↓		
Community	Community Community Org. (CO)	Identification of Target Households Formation of COs Registration of COs
↓		
Target Beneficiaries	Community Org. (CO)	Project Development Link with District DDC plan Community Action Planning

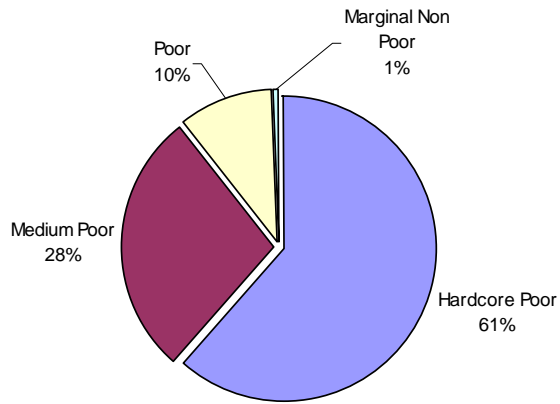
Annex X: PAF program in Karnali Districts

District	No. Of PO	VDC		CO Registration Nos	CO Agreement Nos	Households (HH)			Agreement Amount (Rs.)
		Total VDC	PAF Coverage VDC			Total HH	Poor HH	CO Member Beneficiary HH	
Dolpa	3	23	12	119	119	5,816	2308.9301	3,714	57,048,364.00
Humla	5	27	22	259	253	6,951	2884.7474	6,490	109,974,720.00
Jumla	7	30	20	225	221	15,856	5454.4128	8,894	156,912,235.00
Kalikot	6	30	22	338	339	18,490	10502.529	9,923	149,050,640.00
Mugu	6	24	22	168	157	8,259	4212.0056	6,810	75,667,539.00
Total	27	134	98	1109	1089	55,372	25362.625	35831	548,653,498.00
		100%	73%			100%		65%	

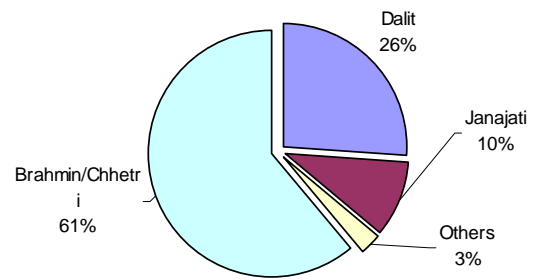
District	Total PAF Agreement Amount (Rs.)	IG No.	IG Agreement Amount (Rs.)	Infra No.	Infrastructure Agreement Amount (Rs.)
Dolpa	57,048,364.00	119	57,048,364.00	0	0
Humla	109,974,720.00	253	106,354,802.00	18	3,619,918.00
Jumla	156,912,235.00	220	132,902,322.00	76	24,009,913.00
Kalikot	149,050,640.00	339	149,050,640.00	0	0
Mugu	75,667,539.00	134	31,059,543.00	90	44,607,996.00
Total	548,653,498.00	1065	476,415,671.00	184	72,237,827.00
	100%		87%		13%



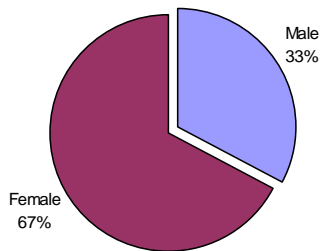
Poverty Wise CO Members in Karnali Districts



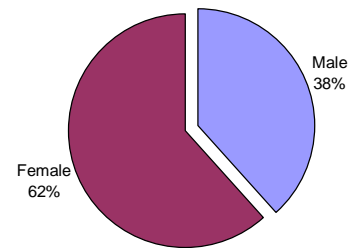
Ethnicity Wise CO Members In Karnali Districts



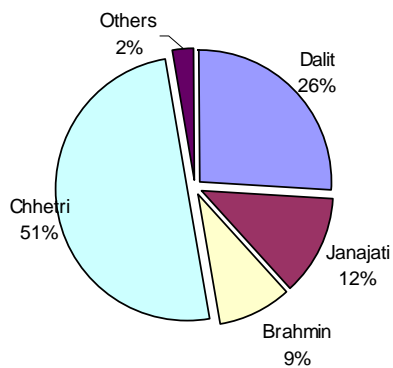
Gender Wise CO Members In Karnali



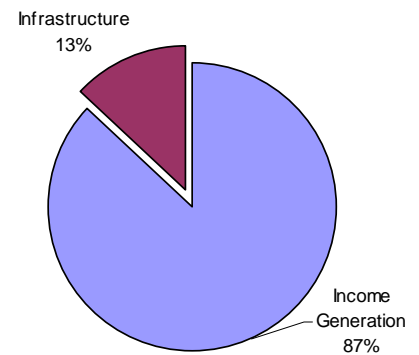
Gender Wise CO Key Position Holders In Karnali



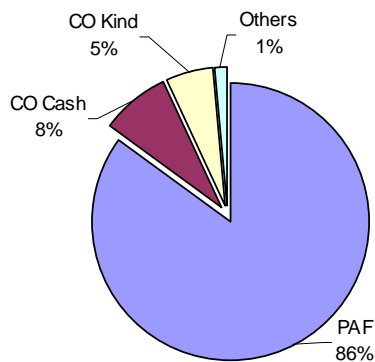
Ethnicity Wise CO Key Position Holders In Karnali Districts



PAF Investment In Karnali Districts Income Generation Vs. Infrastructure



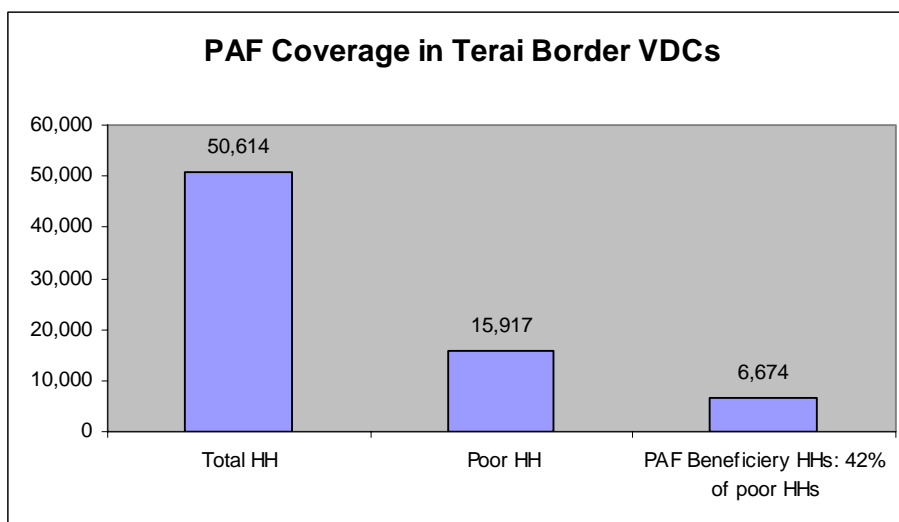
Contribution in Sub Projects In Karnali Districts



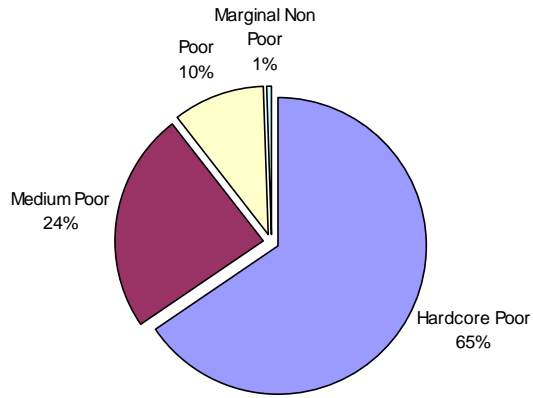
Annex XI: PAF program in Terai Border VDC

District	No. of PO	No Of Border VDC		CO Redg. No.	CO Agreement No.	Households (HH)			Total Agreement PAF Amount (Rs.)
		Total Border VDC	PAF Coverage Border VDC			Total HH in Border VDC	Poor HH in Border VDC	CO Member Beneficiary HH in Border VDCs	
Kapilbastu	6	18	6	128	127	13,826	17,697	3695	67,042,678.63
Mahottari	3	7	3	47	47	7,486	3,518	1008	16,037,998.00
Rautahat	2	5	3	24	19	4,058	974	686	9,809,170.00
Sarlahi	1	15	2	15	15	13,528	2,029	446	5,707,081.00
Siraha	2	14	3	35	34	11,716	4,101	839	11,705,550.00
TOTAL	14	59	17	249	242	50,614	28,319	6674	110,302,477.63
		100%	29%				100%	24%	

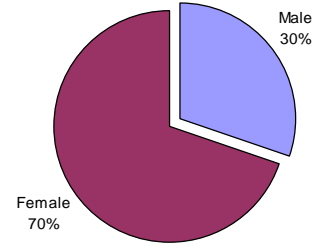
District	Agreement				
	Total Agreement PAF Amount (Rs.)	IG No.	IG Amount (Rs.)	Infra No.	Infra Amount (Rs.)
Kapilbastu	67,042,678.63	126	49,315,304.63	69	17,727,374.00
Mahottari	16,037,998.00	47	16,037,998.00		
Rautahat	9,809,170.00	19	9,809,170.00		
Sarlahi	5,707,081.00	15	5,707,081.00		
Siraha	11,705,550.00	34	11,700,750.00	1	4,800.00
TOTAL	110,302,477.63	241	92,570,303.63	70	17,732,174.00
	100%		84%		16%



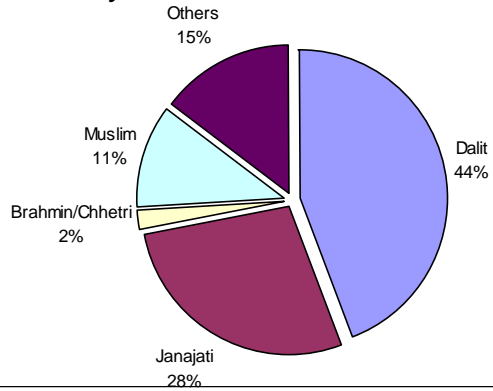
Poverty Wise CO Members In Terai Border VDCs



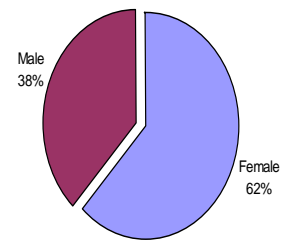
Gender Wise CO Members In Terai Border VDCs



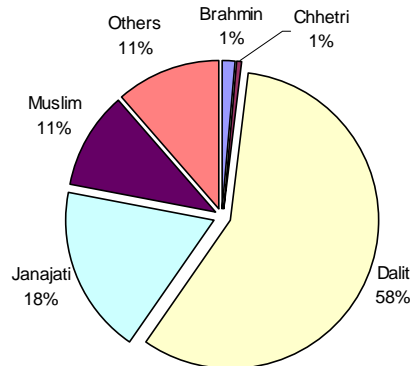
Ethnicity Wise CO Members in Terai Border VDCs



Gender Wise CO Key Position Holders in Terai Border VDCs



Poverty wise CO Key Position Holders In Terai Border VDCs



Annex XII: Collaboration at Districts

District	Collaborating with	Jointly Supported Activities/ Sub projects
Kapilvasatu	District Education Office (DEO)	School Building at Dharampaniya VDC
	DDC	Wooden Bridge at Maharajanj VDC
	UNICEF	Construction of rooms for Child Class at Niglehawa VDC
	VDCS	Almost all VDCs has contributed for road, culverts and bridge sub-projects
	NEA	Rural electrification at Dharamganj VDC, Niglehawa VDC
	BPC/APPSP	Lift Irrigation project at Dhakhaquadi VDC
	BPC/ LFP	Lift Irrigation project at Ramdi VDC
Pyuthan	BPC/VDC	Lift Irrigation project at Ramdi VDC
	BPC/VDC	Lift Irrigation project at Gothibang VDC
	REDP/DDC/VDC	Micro-hydro project at Rajawara VDC
	VDC/ DDC	Link Road at Tusara VDC
	VDC	Link Road at Majkot VDC
	DEO	Bal Bikash Bhawan at Bijuwar
	DFID/CSP, VDC	Tirpa Gad Micro-hydro at Rugha VDCs
Mugu	DDC/RCIW, SNV	Brushu Sinchai - Kotdanda
	DAO	Apple farming in Rugha VDCS
	PCP/UNDP	Jhyari khola MHP- Pina
	DFDP, DDC	Sera lekh Drinking Water Supply- Seri VDC
	VDCs	In all infrastructures projects (water supply, micro-hydro, irrigation, buildings sub-projects VDCs has made cash contribution
	Baitadi	REDP/UNDP, DDC, VDC
REDP/UNDP, DDC, VDC		Irana Gad MHP 15 kw- Ganjari VDC
VDCs		Shrebhawar DWSS. Chaukham VDCs
Siraha		SRI extension in PAF supported COs in all DADO program VDCs.
	DAO, Siraha	Pilot project of Onion Farming in Bhabanipur VDC
	NEA, VDCS	Electricity Extension for Irrigation in Phulkahakati, Padariya VDCs.
	District Veterinary Office	Technical assistance to all PAF COs in Dhodna VDC
	Dabour Nepal/ANSAB	Asparagus farming and marketing
	WINROCK	Bio- Diesel demonstration
DADO	Collaboration for all district agriculture programme	

District	Collaborating with	Jointly Supported Activities/ Sub projects
Darchula	DDC/ VDC	Drinking water supply project at Ranishikar, Eyarkut, Khandeshwori, Shankarapur, Lali VDC
	REDP	Micro-hydro project at Gokuleshowr VDC
	CARE	Micro-hydro project at Byans VDC
	VDC	School Building at Dhap, Gokuleshwar, Khar, Rithachupata VDC
Dadeldhura	REDP	Railgad MHP 15kw Kailpalmandu VDCs
Humla	AEPC, GEF, Nepal Trust and VDC	Syada MHP 26 kW- Syada
Bajhang	Winrock Nepal	Establishment of VSAT internet center, Hemantawada, Iyata VDCs
Jumla	AEPC, VDCs	Microhydro -11kW at Talium VDC, Micro-hydra 22kW at Patarsi VDC
	District Agriculture Office/ Veterinary Office	Livestock and Agricultural Training
Rasuwa	District Agriculture Office	Japanese Trout Fish Farming at Gatlyang VDC
	DDC/VDC, German NRN	Phalagu Khola Bagatetar Irrigation at Laharepauwa VDC
Dhading	Room to Read, DDC, VDC	Construction of School Building at Pida VDC
Baglung	AEPC	Micro-hydro scheme 17 kW at Amarbhumi VDC
Achham	WINROCK	Information Center (V- Sat) at Bailpata VDC
	DDC/ VDC/ REDP	Micro- Hydro project at Thandi & Kaskot VDC
Morang	Cottage & Small Industry Office	3 Month House Wearing Training for Community Members, Tankisunwari & Baujanathpur VDC
Bajura	DDC/VDC/REDP	Mycro- Hydro at Kalli VDC
Jajarkot	AEPC	Mycro- Hydro at Khalanga VDC
	VDC	Birendra Ma. Bi. school Building at Bhagawati VDC
Mahottari	Action Aid	Women Empowerment programme at Balawa & Sarpali VDC
Ramechhap	MEDP	Capacity building of CO at Ramechap, Sukajor, Funarpani & Manthali VDC
	District Vetenary Office	Vaccination and fodder plant distribution at Okhreni VDC
	District Education Office	Informal Education programme at Ramapur VDC
	District Health Office	Support for Health Kid-box for different CO of Different VDC
Kavre	DDC/ VDC/ CIAM	Lift Drinking Water project at Jamdi VDC
Doti	AEPC/DDC/VDC	Micro-Hydro at Toleni VDC and Daud VDC
	Dipayal Silgadhi Nagarpalika & Samuhik Abhiyan	School Building construction at D.S.N.P-5

Annex XIII: Progress and Expenditure in FY 2064/ 065 (2007-08)

Program Implementation Status - FY-2064/65(2007/08)

Based on Expenditure

Description	Yearly Target	Physical Progress	Progress %
Income Generation Sub Projects-25 Districts	2412	3285	136%
Infrastructure Sub Projects-25 Districts	950	374	39%
Innovative Districts	450	91	20%
Sub Total	3812	3750	98%
Partner Organization	235	384	163%
Grand Total	4047	4134	102%

Program Funding Status of FY-2064/65 (2007/08)

Block Grant to COs	Target	Progress	
Block Grant to COs	Yearly Budget in'000'	Expenditure In '000'	% Expenditure in Yearly Budget
Income Generation Sub Projects-25 Districts	850379	1274572	150%
Infrastructure Sub Projects-25 Districts	461407	230651	50%
Innovative Districts	111159	46452	42%
Total Sub Projects (A)	1422945	1551674	109%
Partner Organization	314589	246770	78%
Consultancy Service	102988	23747	23%
Goods & Equipment, Vehicle And Furniture	19335	5120	26%
Training, Workshop, Seminar	30818	7784	25%
Incremental Operating Expenses	80048	40389	50%
Sub Total (B)	547778	323810	59%
Grand Total (A+B)	1970723	1875485	95%

Annex XIV: Ranking of Districts based on Composite Index of 28 Socio-Economic Indicators)

Overall Composite Index

National Value: 0.47269

Group A		
District	Rank	Composite Index
Kathmandu	1	1.00000
Bhaktapur	2	0.94228
Lalitpur	3	0.87434
Chitawan	4	0.71278
Kaski	5	0.70404
Kavre	6	0.64372
Palpa	7	0.61285
Rupandehi	8	0.60565
Syangja	9	0.60197
Tanahu	10	0.58173
Jhapa	11	0.55714
Ilam	12	0.55623
Dhankuta	13	0.55584
Mustang	14	0.55201
Makwanpur	15	0.54841
Baglung	16	0.53291
Parbat	17	0.52436
Kanchanpur	18	0.52062
Sankhuwasabha	19	0.50255
Manang	20	0.49750
Kailali	21	0.49575
Dang	22	0.49242
Sunsari	23	0.49167
Banke	24	0.49080
Gorkha	25	0.48985

Group B		
District	Rank	Composite Index
Nuwakot	26	0.47767
Arghakanchi	27	0.46901
Lamjung	28	0.46694
Morang	29	0.46646
Nawalparasi	30	0.46289
Surkhet	31	0.46244
Bhojpur	32	0.45165
Gulmi	33	0.44916
Myagdi	34	0.44585
Dolakha	35	0.43765
Terhathum	36	0.43174
Dhanusa	37	0.41438
Bardiya	38	0.40130
Parsa	39	0.39876
Taplejung	40	0.38708
Dhading	41	0.38682
Panchthar	42	0.38532
Sindhupalchoke	43	0.37532
Solukhumbu	44	0.36443
Udayapur	45	0.36209
Saptari	46	0.35705
Salyan	47	0.35475
Khotang	48	0.35223
Bara	49	0.35200
Okhaldhunga	50	0.34404

Group C		
District	Rank	Composite Index
Sindhuli	51	0.34369
Sarlahi	52	0.33555
Rautahat	53	0.31535
Pyuthan	54	0.31502
Kapilbastu	55	0.31194
Ramechhap	56	0.30545
Baitadi	57	0.29367
Rukum	58	0.28686
Rasuwa	59	0.28023
Darchula	60	0.27206
Mahotari	61	0.26799
Jajarkot	62	0.26047
Doti	63	0.24781
Siraha	64	0.23094
Dadeldhura	65	0.22553
Rolpa	66	0.21651
Dailekh	67	0.21272
Jumla	68	0.20902
Kalikot	69	0.15247
Dolpa	70	0.13668
Bajura	71	0.11027
Achham	72	0.10632
Bajhang	73	0.05931
Humla	74	0.00414
Mugu	75	0.00000

Source: District Level Indicators of Nepal for Monitoring Overall Development (Based on Selected Socio-Economic Indicators), National Planning Commission Secretariat, Central Bureau of Statistics, 2003

Annex XV: Phase wise PAF Programme District Coverage

