

# **Poverty Alleviation Fund (PAF)**

## **Program Implementation Status**

**(as of 14 June 2007)**

Poverty Alleviation Fund (PAF) is implementing targeted demand-driven community based program directly supporting the third pillar of Tenth Plan/ Poverty Reduction Strategy Paper-PRSP of the Government of Nepal (GoN), i.e. targeted program. Presently PAF is implementing its program in 45 districts. Initially it selected six districts viz. Darchula, Mugu, Pyuthan, Kapilbastu, Ramechhap and Siraha for programme implementation. From the FY 2062/63 (2005/06 AD), 19 additional districts are selected as PAF special programme districts (Achham, Baitadi, Bajhang, Bajura, Dadeldhura, Dailekh, Dolpa, Doti, Humla, Jajarkot, Jumla, Kalikot, Mahottari, Rasuwa, Rautahat, Rolpa, Rukum, Sarlahi and Sindhuli). With this, PAF now covers all the 25 districts from Group-C categorized as most deprived districts by CBS/NPC based on 28 poverty related social-economic indicators. Besides working in these project districts, PAF is implementing innovative programme in other 20 districts as well under the special innovative window programme to capture replicable innovative initiatives to reach to the poor. The current PAF program districts are shown in *Annex-I*.

### **Demand-Driven Community Proposals and Direct Funding**

Till date 5058 community organizations (COs) are registered in PAF (1939 in Initial 6 Districts, 2826 in Additional 19 Districts and rest 293 are through Innovative Window Programme Districts). Accordingly, community proposals are also prepared with participatory planning process. Out of total registrations, PAF made agreement with 4918 COs (1948 are in Initial 6 Districts, 2683 in Additional 19 Districts and rest 287 in Innovative Window Programme Districts) and community are implementing the sub-project (The district wise details on CO registration and agreement are shown in Annex-IV). Based on community demand, several different activities related to Income Generation and Infrastructure sub-projects are proposed and included in the program implementation. Income generation activities are related to agriculture, livestock, cottage industries, trade and services. Similarly, infrastructure are related to micro-irrigation, link road, culvert/bridges, micro-hydro, water supply, sanitation, school and health post buildings. Program activities, in general, being implemented by the community are listed in Annex-II.

The agreement made with 4918 COs amounts to NRs. 2014303852.58 and it is in the process of disbursement to Community Accounts. Till date NRs 1,473,124,220.04 is disbursed to community non-operating account and NRs 991,824,969.25 is disbursed to community operating account. The community fund flow modality is shown in Annex-III and details on CO agreement and disbursement status is shown in Annex-IV.

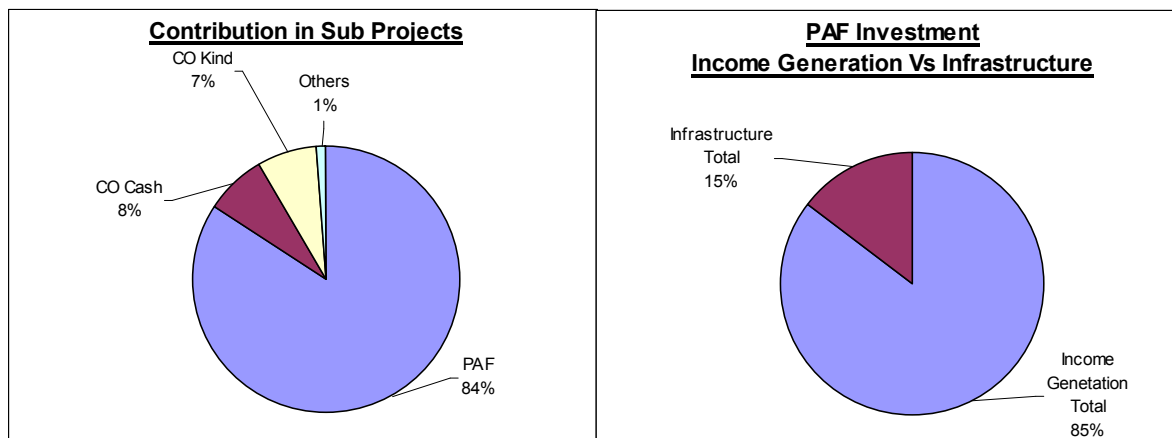
In FY 2061/62, the agreements were made with 595 COs amounting to NRs. 240,197,944 and out of this NRs. 199,652,928 was disbursed to community non-operating account and NRs. 64,098,744 is disbursed to community operating account. In the FY 2062/63, the agreement was made with 1070 additional COs amounting to NRs 526,156,592 out of which NRs. 383,883,292 was disbursed to community non-operating account of which NRs. 226,342,822 was disbursed to community operating account. In this FY 2063/64, till date the agreement is made with 2,187 additional COs amounting to 841,017,649 of which NRs.889,588,000.64 was disbursed to community Non Operating Account and NRs.701,383,402.02 was disbursed to operating account of COs.

The community sub projects are in different stages of implementation. Second level of demand and proposals are also started receiving upon completion of first sub projects. A list of completed sub projects are listed in Annex-V.

Additionally, PAF considered financing 12 out of 20 winning innovative proposals of Nepal Development Market Place (NDM)-World Bank. Agreements are made with those 12 POs that amounts NRs. 14,758,416 to work in 22 VDC of Bajura, Chitwan, Dolakha, Kailali, Kanchanpur, Kathmandu, Myagdi, Morang, Panchthar, Parsa, Saptari, and Syangja districts serving about 8,634 poor households. Till date, NRs. 14,298,492.00 is disbursed and implementation is in different stages. Further PAF is monitoring the World Bank financed NDM projects in Dang, Khotang and Tanahun districts.

## Community Cost Sharing

PAF is investing 84% of the total sub-project cost. Community sharing is 15% (8% in Cash and 7% in Kind) of the total sub-project costs whereas other organizations are sharing 1% in total sub-project cost. In Income Generating sub projects, community is sharing 9% in cash and 3% in kind whereas in Infrastructure sub projects, it is 1% in cash and 26% in kind.



Out of the total PAF investment, 85% is in Income Generating sub-projects and 15% is in Infrastructure sub-projects. The sub-project activities undertaken are shown in Annex-II.

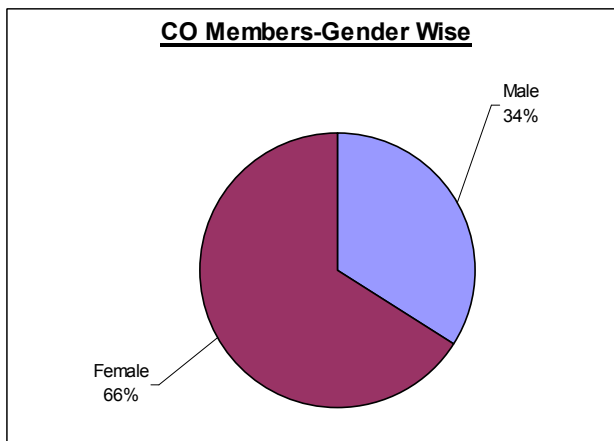
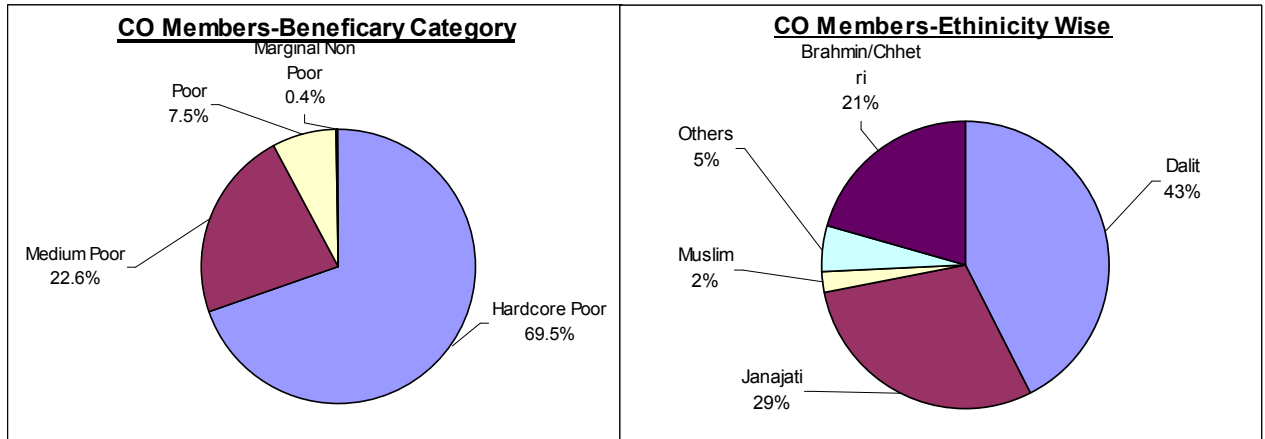
## Partner Organization Supporting Community

The objectives of PAF to select Partner Organizations (POs) are to facilitate Community Organisations (COs). The facilitation shall be in organising COs, their capacity development, planning activities, carryout detailed survey design & estimates, proposal submission, as well as technical assistance and monitoring during implementation. As such, 226 Partner Organizations (POs) are working with communities (76 for Initial 6 Districts, 125 for Additional 19 Districts, 13 for Innovative Window program and 12 for Innovative NDM-World Bank Programme). Till date POs facilitated in total 659 VDCs (236 in Initial 6 Districts, 345 in Additional 19- Districts, 56 in Innovative Window Programme Districts and 22 in NDM-World Bank Programmes) and Community Organizations (COs) are working in those VDCs. Till date 159,992 poor households in those VDCs are served. A detailed district wise PO, COs and coverage are shown in Annex-VI.

## Reach out to Excluded Poor Community Beneficiaries

PAF has taken the strategy to support the idea that poor community should be organized themselves to prepare, implement and manage their program and they should be in the driving seat, with decision making authorities. A social inclusion strategy to reach out to the poor specifically poor women, dalit and janjati are taken (Annex-VII). Participatory community well- being ranking process identified the poor community members as primary beneficiaries at the settlement level. They are organized into community organization to plan, implement and manage the sub-projects.

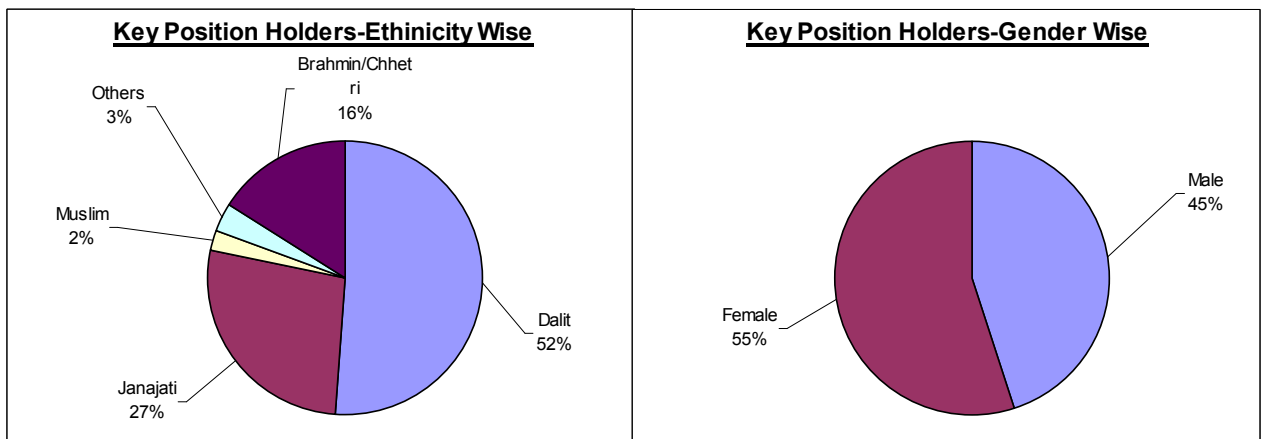
Among beneficiaries members in Community Organizations (COs), 69.5% members falls under hardcore poor category (food sufficiency less than 3 months among criteria fix by community), 22.6% members falls under medium poor category (food sufficiency more than 3 months but less than 6 months among criteria set by the community), 7.5% members falls under poor category (food sufficiency more than 6 months but less than a year among criteria set by the community) and 0.4% members falls under marginal Non-poor Category.



Likewise, CO member households constitutes 43% dalit, 29% janajati, 2% Muslim, 21% Brahmin/Chhetri and 5% others ethnicity. Gender wise, 66% are female members in Community Organizations (COs).

Similarly, the key position holders in the community organisation such as President, Treasurer, Secretary constitutes, 52% Dalit, 27% Janajati, and 2% Muslim and 16% Brahman/Chettri, and 3% other ethnicity. Gender wise, 55% are female key position holders in

Community Organizations (COs).



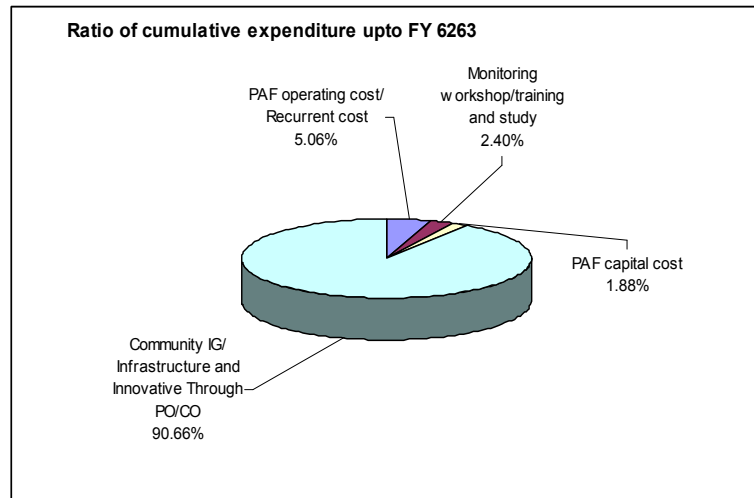
## Budget Expenditure

The total expenditure in FY 2060/61, FY 2061/62 and FY 2062/63 was NRs.5,781,379, NRs. 247,322,606 and NRs. 493,505,927 respectively.

Out of the total PAF expenditure of NRs. 74,66,09,912 till FY 2062/63, 90.66% was in Program Implementation through CO & PO ( CO 78.22% and PO 12.44%), 2.40 % in Monitoring, Training, Studies and Other Support, 1.88 % in capital investment for PAF, 5.06 % in PAF operation/ recurrent cost. Of the total expenditure 87% was from the World Bank IDA Grant and rest 13% from GoN source.

In this FY 2063/64, the expenditure till date is NRs 1,092,428,603.46 which is 87.11% of total budget of NRs 1,254,070,000.00. Total expenditure of PAF till date is NRs. 1,839,038,515.15.

Currently the PAF Project is funded by IDA Grant with US\$ 40.0 M for four years till January 2009 (This constitutes initial US\$ 15.0 M and additional US\$ 25.0 M).



## Lessons and Challenges

There is a high demand for the programme as the sub-projects originate at grass-root levels. Communities have demonstrated their keen interest to undertake the programme and make necessary contributions. The current challenge is to make a trade-off between rapid implementation and institution building enhancing the technical capability of the community organizations. In view of the wide varieties of activities undertaken within the sub-project, the challenges faced for sustainability of the sub-projects are:

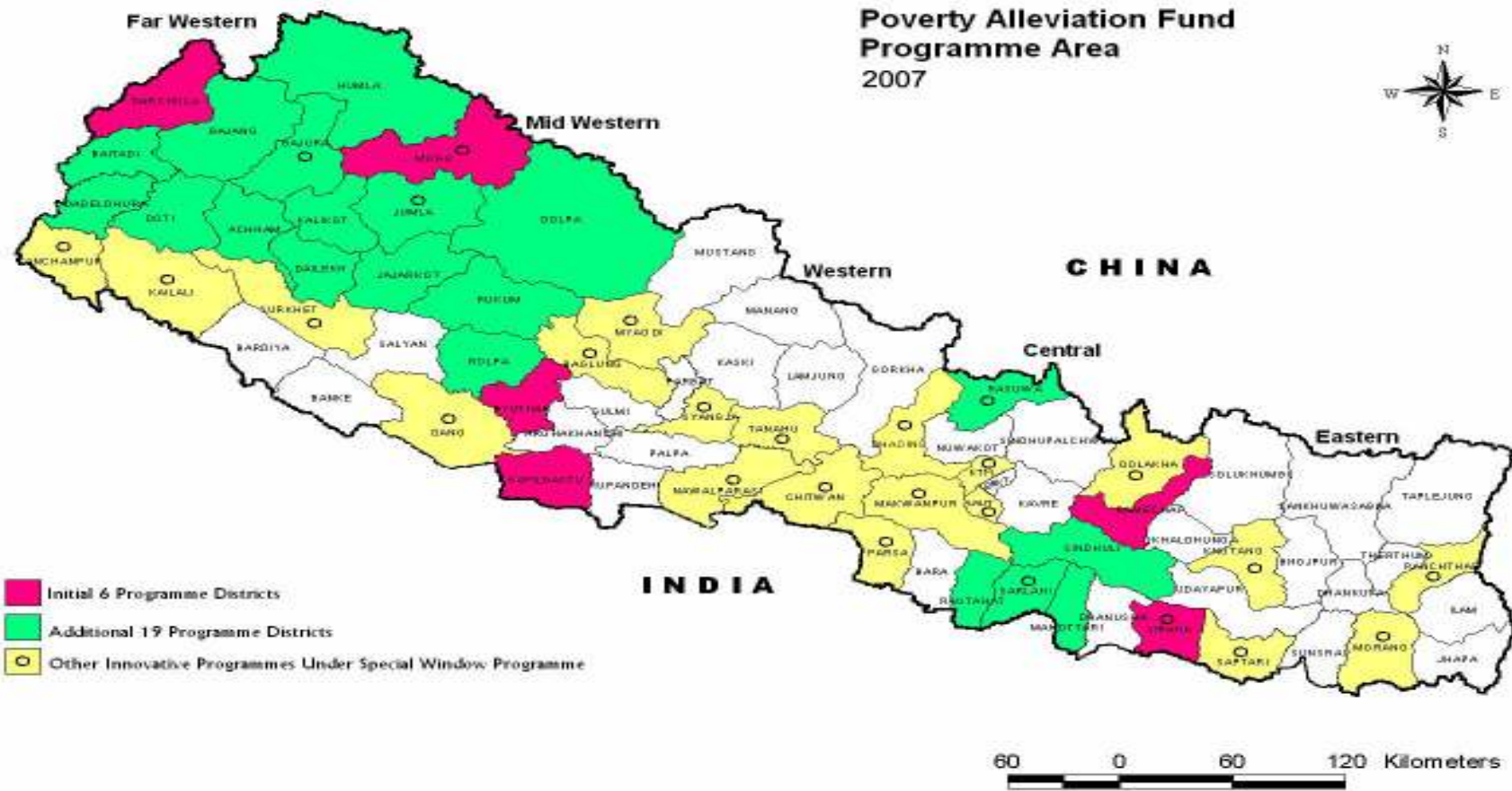
- Linkage with market for sustaining income-generating activities.
- Providing appropriate technology support for different activities including linkages with existing service structure
- Availing Insurance Safety-Net particularly for livestock
- Exploring an alternative to livestock based activities for landless poor
- Building Community Capacity to Manage Revolving Fund

It is inevitable to work with diversified groups of poor communities supporting each other and network for linkages and collaboration with other programmes and line agencies to support communities in different areas of strength of these programmes. Further, legal institutionalization of Community Organizations and establishment of strong linkages with VDC/ DDC are also important for sustainability and long-term support to these community groups.

Monitoring, Research and Development needs to be strengthened to support the implementation including capacity building of main actors i.e. CO, PO, Local Bodies and PAF.

PAF should work on its exit strategy focusing on its strategic thrust to enable community to go to sustained path to get out of poverty within a stipulated time.

# Annex I: PAF Programme Districts



## Annex II: Sub Project Activities

### *INCOME GENERATION ACTIVITIES*

#### **Agriculture Related**

Agro Forestry  
Apple Farming  
Asparagus Farming  
Badam Cultivation  
Banana Farming  
Bee Keeping  
Cereal Crops Farming  
Fertilizer Production  
Fishery  
Fruits Farming  
Ginger Cultivation  
Green House  
Herbs Farming  
Lokta Farming  
Maize Cultivation  
Milk Chilling Center  
Mushroom Farming  
Nursery  
Off Season Veg. Farming  
Seeds Business  
Sugarcane Cultivation  
Vegetable Farming

#### **Livestock Related**

Agri Tools  
Animal Insurance  
Animal Treatment Fund  
Badel Raising  
Bag  
Bread Udyog  
Buffalo Raising  
Candle Udhog  
Carpentary  
Carpentary Instruments  
Carpet  
Chiura Udyog  
Cloth Udhog  
Cottage Industry  
Cow Raising  
Dairy Firm  
Dalmoth Udhoyag  
Dhaka Bunai  
Doko Namlo Rope  
Duck Raising  
Essence  
Farma  
Fiber Material Making  
Fruit Purify Center  
Garment  
Goat Raising  
He Buffalo Raising  
Horse Raising  
Improved Stove Making  
Juice Production  
Madal Making

#### **Manufacturing/ Cottage Industries**

Metal Products Production

Muda  
Muel Raising  
Nanglo  
Nepali Paper Udhog  
Noodles Industry  
Ox Raising  
Pig Raising  
Pigeon Keeping  
Pikkle Udhog  
Potato Chips  
Pottery (Manufacture)  
Poultry  
Rabbit Keeping  
Radipakhi Bunai  
Rope Making  
Sheep Raising  
Shoe Making  
Soap Industry  
Sweater Udyog  
Sweet Shop  
Tapari  
Titaura  
Tyle Industry  
Umbrella Udyog  
Yak Raising

#### **Service Sector**

Band Baaja  
Bus Truck Maintenance  
Cart Service  
Communication Service  
Computer Maintenance Center  
Cycle Maintenance  
Dhalan Pharma  
Goods Transportation  
House Wiring  
Laundry  
Loud Speaker  
Mechanical Workshop  
Mill (Kutani Pisani)  
Motercycle Maintainance  
Painting  
PCO  
Photo Studio  
Plumber Instruments  
Radio TV Maintenance  
Resturant  
Rikshwa  
Rikshwa Maintainance  
Saloon  
Screen Print  
Sewing Machine  
Solar Repairing & Maintenance Shop  
Tailoring  
Tea Shop  
Tent House  
Thela Gada  
Transportation Service  
Tripal  
Vehical Maintenance

Washing Machine  
Welding Shop

### **Trading**

Aggregate  
Agricultural Input Business  
Agrovet  
Animal Business  
Bamboo Business  
Bhujjiya Shop  
Book Shop  
Cloth Business  
Cooperative Shop  
Dry Fish Business  
Egg Business  
Electric Shop  
Fancy Shop  
Fish Business  
Fruits And Vegetable Shop  
Fruits Shop  
Furniture Business  
General Stores  
Gold & Silver Shop  
Herbs Business  
Ice Crea, Kulfi, Chaat  
Jewelry Shop  
Kawadi Business  
Kerosene Shop  
Manihara Business  
Masala Udyog  
Masson Instruments  
Meat Shop  
Medicine Shop  
Metal Business  
Milk Business  
Paan Shop  
Pottery Shop  
Purse, Belt Shop  
Retail Business  
Rice Business  
Shoe Shop  
Stamp Making Shop  
Stationary  
Thela Business  
Utensial Shop  
Vegetable Shop  
Vetnary Shop  
Watch Shop  
Wood Business

### ***INFRASTRUCTURE ACTIVITIES***

#### **Infrastructure**

Boring Pump  
Bridge Construction  
Canal  
Culvert  
Dam  
Deep Boring  
Dhaki Okhal  
Dhikki Pump  
Electricity  
Ghatta  
Hand Pump  
Hume Pipe  
Irrigation  
Micro Hydro

Micro Irrigation  
Plastic Pond  
Pond  
Pond Maintenance  
Pump Set  
Rice Mill  
River Training Work  
Road  
Road Maintenance  
Solar System  
Suspension Bridge  
Water Harvest Tank  
Water Pump  
Well  
Wire Bridge  
Wooden Bridge

#### **Social Environmental Infrastructure**

Building Construction  
Building Maintenance  
Drain  
Dumping Site  
Health Post  
Improved Stove  
School Boundary Wall  
School Building/Room  
School Maintenance  
Toilet  
Tube Well  
Water Supply And Sanitation  
Water Supply Maintenance

#### **Social and Environmental Basic Service**

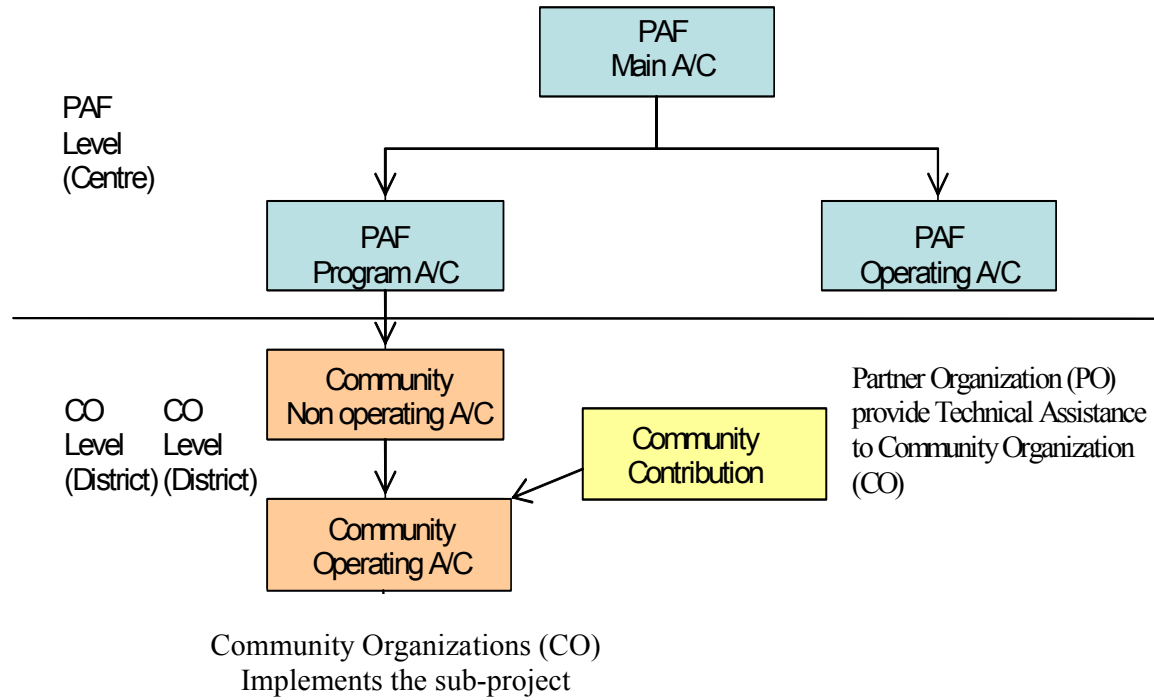
Birth Certificate and Citizenship Regd.  
First Aid Instruments  
Health And Sanitation  
School Furniture

### ***INNOVATIVE ACTIVITIES***

- Water supply cum Micro-irrigation and integrated agriculture in hills
- Improved Wire Bridge (Tar Pool)
- Support poor for inclusion in micro-hydro project through IG
- Support community effort to complete irrigation project for vegetable farming
- Micro-financing and subsidy scheme for Arsenic Filters to the community
- Pigeon keeping
- Fish cultivation in lake and rice fields
- Rice intensification
- Cardamom cultivation in community forest
- Briquette Production
- Integrated Approach in agro based IG
- Orange and Coffee production and marketing management
- Healthy women for sustainable development
- Introducing Wi-Fi Technology in rural areas
- Evaporative cooling technology for food preservation
- Use of local resources for sustainable self independence

## Annex III: Funds Flow Modality

---





## Annex IV: CO registration, agreement for sub-project and disbursement status

District	CO Registered w/ PAF (No.)	Agreement			Disbursement			
		With CO	No.	Amount (NRs.)	Non Operating		Operating	
					Sub Project No.	Amount (NRs.)	Sub Project No.	Amount (NRs.)
<b>Initial 6 Districts</b>								
Darchula	400	387	420	137,808,417.33	306	95,334,514.00	295	74,102,805.50
Kapilbastu	481	478	479	247,131,434.52	754	213,891,393.52	754	162,754,245.38
Mugu	139	126	142	46,257,830.00	139	41,036,767.00	135	35,326,613.50
Pyuthan	228	226	249	90,430,519.07	122	35,121,246.92	122	26,032,369.31
Ramechhap	251	248	251	75,631,421.29	285	73,771,081.29	285	59,601,429.90
Siraha	440	405	407	165,317,017.19	610	164,305,605.19	608	128,193,512.23
<b>Sub Total</b>	<b>1,939</b>	<b>1,870</b>	<b>1,948</b>	<b>762,576,639.40</b>	<b>306</b>	<b>95,334,514.00</b>	<b>295</b>	<b>74,102,805.50</b>
<b>Additional 19 Districts</b>								
Achham	227	225	237	82,486,011.00	125	37,832,241.00	122	22,291,905.40
Baitadi	184	116	118	54,313,402.72	116	52,677,074.44	70	19,968,931.85
Bajhang	52	52	62	19,209,116.35	62	19,209,116.35	61	13,447,578.00
Bajura	134	134	159	79,082,461.86	123	61,455,191.45	6	1,713,940.00
Dadeldhura	136	135	136	48,510,733.99	134	47,373,615.00	131	28,152,483.00
Dailekh	107	107	107	38,792,470.00	107	25,766,450.00	107	25,766,450.00
Dolpa	78	74	74	35,638,608.00	70	22,167,465.60	14	3,143,473.00
Doti	181	151	152	63,648,602.00	152	63,648,602.00	124	41,771,429.60
Humla	99	99	116	39,220,358.00	116	39,350,865.00	110	22,497,405.80
Jajarkot	206	139	139	79,533,355.15	103	54,438,030.24	96	39,581,869.25
Jumla	62	57	57	47,909,878.00	68	37,700,275.00	12	4,212,728.00
Kalikot	104	104	104	47,744,936.00	0	-	0	-
Mahottari	308	304	306	110,135,521.00	199	68,855,443.00	137	27,472,361.00
Rasuwa	184	152	162	60,254,676.47	147	40,028,656.45	96	28,757,858.02
Rautahat	258	258	258	133,468,041.75	248	93,051,556.15	245	85,176,343.15
Rolpa	7	7	7	2,763,900.00	7	1,658,340.00	7	1,658,340.00
Rukum	81	70	71	27,494,239.00	34	9,268,645.00	13	3,122,037.00
Sarlahi	159	159	159	57,426,782.00	28	10,632,130.00	28	9,028,892.00
Sindhuli	259	259	259	103,208,143.50	177	60,687,827.05	166	52,366,638.80
<b>Sub Total</b>	<b>2,826</b>	<b>2,602</b>	<b>2,683</b>	<b>1,130,841,236.79</b>	<b>125</b>	<b>37,832,241.00</b>	<b>122</b>	<b>22,291,905.40</b>
<b>Innovative Programme Districts</b>								
Baglung	1	1	1	722,165.00	1	722,165.00	1	361,000.00
Chitawan	12	9	11	2,795,860.00	12	3,782,420.00	12	2,347,000.00
Dhading	30	29	29	9,590,375.00	29	9,590,375.00	29	5,754,225.00
Jumla	37	37	37	24,126,786.00	37	24,126,786.00	37	14,476,071.00
Kanchanpur	78	76	76	24,573,692.00	76	24,573,692.00	73	20,027,532.00
Kavrepalan	1	1	1	1,735,037.00	1	1,735,037.00	0	-
Makwanpur	43	41	41	10,692,876.52	22	3,895,561.52	22	3,484,463.52
Morang	61	61	61	32,087,754.87	46	20,874,621.87	46	18,081,432.04
Nawalparasi	1	1	1	1,551,248.00	1	1,551,248.00	1	1,551,248.00
Rasuwa	1	1	1	2,181,450.00	1	2,181,450.00	1	2,181,450.00
Sarlahi	27	27	27	7,812,750.00	27	7,812,750.00	27	5,398,200.00
Surkhet	1	1	1	3,015,982.00	1	3,015,982.00	1	2,020,708.00
<b>Sub Total</b>	<b>293</b>	<b>285</b>	<b>287</b>	<b>120,885,976.39</b>	<b>254</b>	<b>103,862,088.39</b>	<b>250</b>	<b>75,683,329.56</b>
<b>Total =</b>	<b>5,058</b>	<b>4,757</b>	<b>4,918</b>	<b>2,014,303,852.58</b>	<b>4486</b>	<b>1,473,124,220.04</b>	<b>3994</b>	<b>991,824,969.25</b>

## Annex V: Completed Sub Projects

District	Activity Group	Activity	No
Darchula	Agriculture & Others	Fruits Farming	
		Herbal Nursery	199
		Herbs Farming	6
		Nursery	2
		Vegetable Farming	175
		<b>Total of Agriculture &amp; Others</b>	<b>382</b>
Darchula	Animal Husbandary	Animal Insurance	5
		Animal Treatment Fund	5
		Cow Raising	103
		Goat Raising	861
		Poultry	105
		Yak Raising	9
		<b>Total of Animal Husbandary</b>	<b>1088</b>
Darchula	Capacity Building	Aamchi Training	1
		Account And Store Mgt Training	2
		Account Keeping Training	11
		Animal Husbandary Training	5
		Capacity Building Training	23
		CO Management Training	1
		First Aid Training	9
		Forest Management Taining	7
		Gender Equality & Dev. Trg	2
		Goat Raising Training	3
		Herbal Nursery Management	5
		Improved Stove Training	3
		Leadership Training	2
		Pasture Land Mgt. Training	4
		Shoe Making Training	2
		Tailoring Training	2
		Vegetable Farming Training	10
		Wood Craft Training	1
		<b>Total of Capacity Building</b>	<b>93</b>
Darchula	Infrastructure-IG	Ghatta	1
		Irrigation	2
		<b>Total of Infrastructure-IG</b>	<b>3</b>
Darchula	Infrastructure-Social	Micro Irrigation	1
		School Maintenance	1
		Toilet	127
		Water Supply And Sanation	18
		Water Supply Maintenace	2
		Water Supply/Drinking Water	1
		<b>Total of Infrastructure-Social</b>	<b>150</b>
Darchula	Manufacturing & Others	Carpentary	1
		Carpet	46
		Potato Chips	1
		<b>Total of Manufacturing &amp; Others</b>	<b>48</b>
Darchula	Service Sector	Tailoring	15
		<b>Total of Service Sector</b>	<b>15</b>
Darchula	Social Service	Improved Stove	56

		Revolving Fund	1
Darchula	Social Service	Scholarship	1
		School Furniture	292
		<b>Total of Social Service</b>	<b>350</b>
Darchula	Trading	Metal Business	10
		Misc. IG	3
		<b>Total of Trading</b>	<b>13</b>
Kapilbastu	Agriculture & Others	Bee Keeping	1
		Boring Pump	14
		Cereal Crops Farming	9
		Dhikki Pump	467
		Fishery	13516
		Fruits Farming	
		Off Season Veg. Farming	6
		Spray Machine	1
		Vegetable Farming	588
		<b>Total of Agriculture &amp; Others</b>	<b>14602</b>
Kapilbastu	Animal Husbandary	Badel Raising	
		Buffalo Raising	779
		Cow Raising	8
		Duck Raising	157
		Goat Raising	2758
		Ox Raising	4
		Pig Raising	592
		Poultry	5443
		Sheep Raising	75
		<b>Total of Animal Husbandary</b>	<b>9816</b>
Kapilbastu	Capacity Building	Agrovet Training	5
		Animal And Market Dev Training	1
		Animal Husbandary Training	55
		Awareness Training	4
		Bee Keeping Training	1
		Buffalo Raising Training	34
		Capacity Building Training	10
		Carpentary Training	1
		Cemented Ring Making Training	1
		Child Development Programme	4
		Child Literacy Class	11
		Commuity Awareness Training	1
		Computer Training	13
		Driving Training	2
		Electronics Training	3
		Fish Business Training	3
		Fishery Training	10
		Goat Raising Training	34
		House Wiring Training	4
		Literacy Class	50
		Market Management Training	1
		Masson Training	4
		Mechanical Training	1
		Micro Enterprise Training	3
		Noodles Making Training	1

		Painting Training	2
		Pig Raising Training	17
		Pikkle Making Training	1
Kapilbastu	Capacity Building	Poultry Training	14
		Radio TV Maintenance Training	1
		Repair And Maintenance Training	13
		Sewing Cutting Training	5
		Skill Development Training	1
		Tailoring Training	14
		Tap Maintenance Training	2
		Tapari Training	1
		Vegetable Farming Training	153
		Vetnery Training	11
		<b>Total of Capacity Building</b>	<b>492</b>
Kapilbastu	Infrastructure-IG	Culvert	13
		Deep Boaring	16
		Ghatta	1
		Pump Set	1
		Road	6
		Road And Culvert	1
		<b>Total of Infrastructure-IG</b>	<b>38</b>
Kapilbastu	Infrastructure-Social	Building Construction	1
		Dumping Site	56
		Electricity	7
		Hand Pump	381
		Hume Pipe	2
		Road And Well	1
		School Building/Room	1
		School Maintenance	1
		Toilet	589
		<b>Total of Infrastructure-Social</b>	<b>1039</b>
Kapilbastu	Manufacturing & Others	Agri Tools	2
		Bag	1
		Carpentary Instruments	1
		Chiura Udyog	1
		Dalmoth Udhoyag	
		Essence	1
		Furniture Business	14
		Madal	
		Metal Products Production	2
		Pikkle Udhoyog	1
		Potato Chips	1
		Rope Making	1
		Shoe Making	1
		Sweet Shop	1
		Tapari	12
		Tyle Industry	1
		<b>Total of Manufacturing &amp; Others</b>	<b>40</b>
Kapilbastu	Service Sector	Agrovet	4
		Band Baaja	2
		Bicycle And Motorcycle	3
		Cart Service	24

		Cycle Maintenance	27
		Dhalan Pharma	2
Kapilbastu	Service Sector	Goods Transportation	2
		Hotel	1
		Laundry	1
		Loud Speaker	1
		Masson Instruments	1
		Painting	1
		Photo Studio	1
		Plumber Instruments	2
		Radio TV Maintenance	5
		Resturant	
		Rikshwa	66
		Saloon	11
		Sewing Machine	8
		Tailoring	30
		Tea Shop	6
		Vehical Maintenance	2
		Washing Machine	1
		Welding Shop	1
		<b>Total of Service Sector</b>	<b>202</b>
Kapilbastu	Social Service	Improved Stove	59
		School Furniture	1
		<b>Total of Social Service</b>	<b>60</b>
Kapilbastu	Trading	Agricultural Input Business	14
		Animal Business	12
		Bhujiya Shop	2
		Cloth Business	1
		Electric Shop	4
		Fancy Shop	13
		Fish Business	5
		Fruits And Vegetable Shop	1
		Fruits Shop	2
		Galla	28
		Ice Crea, Kulfi, Chaat	1
		Kawadi Business	2
		Kerosene Shop	1
		Lohari Giri	1
		Manihara Business	10
		Masala Udyog	1
		Medicine Shop	1
		Metal Business	1
		Noodles Business	1
		Paan Shop	1
		Pottery Shop	
		Retail Business	356
		Shoe Shop	1
		Thela Business	1
		Tobacco Business	1
		Vegetable Shop	8
		<b>Total of Trading</b>	<b>469</b>
Makwanpur	Infrastructure-IG	Irrigation	5

		<b>Total of Infrastructure-IG</b>	<b>5</b>
Makwanpur	Infrastructure-Social	Water Supply And Sanation	7
		<b>Total of Infrastructure-Social</b>	<b>7</b>
Morang	Agriculture & Others	Agro Forestry	2
		Bee Keeping	1
		Boring Pump	1
		Fertilizer Production	12
		Spray Machine	3
		Vegetable Farming	314
		<b>Total of Agriculture &amp; Others</b>	<b>333</b>
Morang	Animal Husbandary	Animal Treatment Fund	1
		Buffalo Raising	42
		Cow Raising	207
		Fooder	7
		Goat Raising	987
		Goat Shade	24
		Ox Raising	273
		Pig Raising	620
		Pig Shade	23
		Poultry	580
		<b>Total of Animal Husbandary</b>	<b>2764</b>
Morang	Capacity Building	Agro Forestry Training	7
		Animal Health Training	10
		Animal Husbandary Training	16
		Awareness Training	6
		Capacity Building Training	65
		Electronics Training	11
		Fertilizer Prod'n Training	13
		Literacy Class	3
		Metal Work Training	1
		Sewing Cutting Training	1
		Skill Development Training	10
		Study Tour	1
		Vegetable Farming Training	3
		<b>Total of Capacity Building</b>	<b>147</b>
Morang	Infrastructure-IG	Deep Boaring	1
		Duck, Pegin, Chicken Shade	16
		Motor	1
		Pump Set	2
		<b>Total of Infrastructure-IG</b>	<b>20</b>
Morang	Infrastructure-Social	Building Construction	6
		Drain	3
		School Building/Room	20
		Toilet	168
		Tube Well	79
		<b>Total of Infrastructure-Social</b>	<b>276</b>
Morang	Manufacturing & Others	Dalmoth Udhoyag	7
		<b>Total of Manufacturing &amp; Others</b>	<b>7</b>
Morang	Service Sector	Cycle Maintenance	2
		Help To Disable People	4
		Hotel	3
		Motercycle Maintainance	8

		Radio TV Maintenance	5
Morang	Service Sector	Rikshwa	35
		Rikshwa Maintainance	2
		Saloon	2
		Sewing Machine	5
		Sheltering Business	1
		Tailoring	2
		Tea Shop	4
		<b>Total of Service Sector</b>	<b>73</b>
Morang	Social Service	Improved Stove	6
		School Furniture	40
		Tripal	1
		<b>Total of Social Service</b>	<b>47</b>
Morang	Trading	Animal Business	1
		Bamboo Business	10
		Cloth Business	1
		Electric Shop	1
		Fish Business	1
		Manihara Business	6
		Meat Shop	2
		Medicine Shop	9
		Metal Business	1
		Milk Business	1
		Paan Shop	2
		Retail Business	68
		Vegetable Shop	18
		<b>Total of Trading</b>	<b>121</b>
Mugu	Agriculture & Others	Badam Farming	1
		Bee Keeping	11
		Dhaki Okhal	19
		Green House	9
		Vegetable Farming	99
		<b>Total of Agriculture &amp; Others</b>	<b>139</b>
Mugu	Animal Husbandary	Buffalo Raising	79
		Goat Raising	2499
		Goat Shade	19
		Poultry	2010
		Sheep Raising	40
		Yak Raising	60
		<b>Total of Animal Husbandary</b>	<b>4707</b>
Mugu	Capacity Building	Account Keeping Training	1
		Animal Husbandary Training	6
		Animal Raising Training	6
		Bee Keeping Training	1
		Buffalo Raising Training	8
		Capacity Building Training	72
		Goat Raising Training	18
		Micro Enterprise Training	13
		Plumber Training	3
		Poultry Training	4
		Pump Operation Training	1
		Repair And Maintenance Training	1

		Retail Business Training	1
		Vegetable Farming Training	9
		<b>Total of Capacity Building</b>	<b>144</b>
Mugu	Infrastructure-IG	Ghatta	1
		Irrigation	664
		Road	1
		Water Harvest Tank	7
		Wooden Bridge	2
		<b>Total of Infrastructure-IG</b>	<b>675</b>
Mugu	Infrastructure-Social	Electricity	1
		Micro Hydro	4
		School Building/Room	1
		Water Supply And Mico Irrigation	1
		Water Supply And Sanation	2
		Water Supply/Drinking Water	7
		<b>Total of Infrastructure-Social</b>	<b>16</b>
Mugu	Manufacturing & Others	Carpet	11
		Furniture Business	1
		Potato Chips	1
		<b>Total of Manufacturing &amp; Others</b>	<b>13</b>
Mugu	Service Sector	Agrovet	1
		Tailoring	15
		<b>Total of Service Sector</b>	<b>16</b>
Mugu	Social Service	Improved Stove	133
		<b>Total of Social Service</b>	<b>133</b>
Mugu	Trading	Metal Business	1
		Micro Enterprise	4
		Retail Business	11
		<b>Total of Trading</b>	<b>16</b>
Nawalparasi	Infrastructure-Social	Wire Bridge	1
		<b>Total of Infrastructure-Social</b>	<b>1</b>
Pyuthan	Animal Husbandary	Buffalo Raising	9
		Goat Raising	137
		Ox Raising	8
		Pig Raising	54
		<b>Total of Animal Husbandary</b>	<b>208</b>
Pyuthan	Capacity Building	Animal Husbandary Training	3
		Goat Raising Training	3
		Literacy Class	1
		Plumber Training	1
		Repair And Maintenance Training	1
		Sudeni Training	3
		Toilet Construction Training	2
		Water Supply Maintenance Training	1
		<b>Total of Capacity Building</b>	<b>15</b>
Pyuthan	Infrastructure-IG	Road	1
		<b>Total of Infrastructure-IG</b>	<b>1</b>
Pyuthan	Infrastructure-Social	School Maintenance	1
		Toilet	40
		Water Supply And Sanation	1
		Water Supply Maintenace	1
		Water Supply/Drinking Water	1



		<b>Total of Infrastructure-Social</b>	<b>44</b>
Pyuthan	Service Sector	Tailoring	7
		<b>Total of Service Sector</b>	<b>7</b>
Pyuthan	Social Service	Improved Stove	5
		Scholarship	2
		<b>Total of Social Service</b>	<b>7</b>
Pyuthan	Trading	Animal Business	1
		<b>Total of Trading</b>	<b>1</b>
Ramechhap	Agriculture & Others	Bee Keeping	8
		Herbs Farming	1
		Juice Production	1
		Nursery	1
		Vegetable Farming	52
		<b>Total of Agriculture &amp; Others</b>	<b>63</b>
Ramechhap	Animal Husbandary	Animal Insurance	89
		Buffalo Raising	54
		Fooder	3026
		Goat Raising	686
		Pig Raising	137
		Pig Shade	10
		Poultry	868
		Rabbit Keeping	150
		<b>Total of Animal Husbandary</b>	<b>5020</b>
Ramechhap	Capacity Building	Animal Husbandary Training	18
		Animal Raising Training	3
		Capacity Building Training	1
		Goat Raising Training	2
		Herbal Nursery Management	1
		Pig Raising Training	1
		Vegetable Farming Training	1
		<b>Total of Capacity Building</b>	<b>27</b>
Ramechhap	Infrastructure-IG	Pond	1
		<b>Total of Infrastructure-IG</b>	<b>1</b>
Ramechhap	Infrastructure-Social	Building Construction	7
		Toilet	101
		<b>Total of Infrastructure-Social</b>	<b>108</b>
Ramechhap	Manufacturing & Others	Dalmoth Udhoyag	7
		Fiber Material Making	5
		Furniture Business	7
		Metal Products Production	1
		<b>Total of Manufacturing &amp; Others</b>	<b>20</b>
Ramechhap	Service Sector	Hotel	3
		Photo Studio	1
		Radio TV Maintenance	1
		Tailoring	6
		<b>Total of Service Sector</b>	<b>11</b>
Ramechhap	Trading	Animal Business	6
		Cloth Business	2
		Electric Shop	1
Ramechhap	Trading	Metal Business	2
		Retail Business	38
		Shoe Shop	2

		Vegetable Shop	1
		Wood Business	1
		<b>Total of Trading</b>	<b>53</b>
Rasuwa	Animal Husbandary	Buffalo Raising	52
		<b>Total of Animal Husbandary</b>	<b>52</b>
Rasuwa	Capacity Building	Account Keeping Training	
		<b>Total of Capacity Building</b>	
		<b>Total of Monitoring and Evaluation</b>	
Rautahat	Agriculture & Others	Agro Forestry	60
		Dhikki Pump	312
		Fertilizer Production	1
		Sugarcane	1
		Vegetable Farming	317
		<b>Total of Agriculture &amp; Others</b>	<b>691</b>
Rautahat	Animal Husbandary	Animal Treatment Fund	62
		Buffalo Raising	512
		Buffalo Shade	489
		Cow Raising	63
		Cow Shade	55
		Goat Raising	379
		Goat Shade	132
		He Bufallo Raising	3
		Ox Raising	190
		Pig Raising	94
		Pig Shade	53
		Poultry	2
		<b>Total of Animal Husbandary</b>	<b>2034</b>
Rautahat	Capacity Building	Agrovet Training	1
		Animal Raising Training	217
		Beauty Parlor Training	2
		Market Management Training	180
		Vegetable Farming Training	31
		<b>Total of Capacity Building</b>	<b>431</b>
Rautahat	Infrastructure-IG	Pump Set	4
		<b>Total of Infrastructure-IG</b>	<b>4</b>
Rautahat	Manufacturing & Others	Agri Tools	1
		Furniture Business	7
		<b>Total of Manufacturing &amp; Others</b>	<b>8</b>
		<b>Total of Monitoring and Evaluation</b>	
Rautahat	Service Sector	Agrovet	1
		Bicycle And Motorcycle	2
		Cart Service	19
		Cycle Maintenance	4
		Hotel	1
		Plumber Instruments	1
		Rikshwa	4
		Saloon	1
		Sewing Machine	2
		Tailoring	2
Rautahat	Service Sector	Welding Shop	1
		<b>Total of Service Sector</b>	<b>38</b>

Rautahat	Trading	Animal Business	68
		Bamboo Business	2
		Bhujiya Shop	7
		Cloth Business	11
		Fancy Shop	19
		Fish Business	1
		Kawadi Business	4
		Meat Shop	2
		Medicine Shop	1
		Metal Business	1
		Pottery Shop	2
		Retail Business	307
		Rice Business	23
		Stationary	1
		Thela Business	1
		Tobacco Business	2
		<b>Total of Trading</b>	<b>452</b>
Sindhuli	Agriculture & Others	Agro Forestry	600
		Bee Keeping	
		Dairy Firm	2
		Ginger Farming	3
		Vegetable Farming	8
		<b>Total of Agriculture &amp; Others</b>	<b>613</b>
Sindhuli	Animal Husbandary	Animal Treatment Fund	
		Buffalo Raising	293
		Cow Raising	37
		Goat Raising	3589
		He Bufallo Raising	27
		Ox Raising	323
		Pig Raising	110
		<b>Total of Animal Husbandary</b>	<b>4379</b>
Sindhuli	Capacity Building	Animal Health Training	3
		Animal Health Worker Training	1
		Animal Husbandary Training	4
		Animal Raising Training	44
		Awareness Training	12
		Child Literacy Class	1
		CO Management Training	4
		Market Management Training	1
		Micro Enterprise Training	45
		Saving & Credit Mgmt. Trg.	68
		Skill Development Training	4
		Study Tour	1
		<b>Total of Capacity Building</b>	<b>188</b>
Sindhuli	Infrastructure-IG	Ghatta	3
		Rice Mill	1
		<b>Total of Infrastructure-IG</b>	<b>4</b>
Sindhuli	Manufacturing & Others	Agri Tools	1
		<b>Total of Manufacturing &amp; Others</b>	<b>1</b>
Sindhuli	Service Sector	Cart Service	21
Sindhuli	Service Sector	Goods Transportation	
		Hotel	3

		Photo Studio	1
		Radio TV Maintenance	2
		Sewing Machine	1
		Tailoring	5
		Thela Gada	3
		Transportation Service	1
		<b>Total of Service Sector</b>	<b>37</b>
Sindhuli	Trading	Book Shop	37
		Cloth Business	1
		Medicine Shop	1
		Metal Business	2
		Micro Enterprise	8
		Retail Business	83
		<b>Total of Trading</b>	<b>132</b>
Siraha	Agriculture & Others	Asparagus Farming	12
		Boring Pump	14
		Dhikki Pump	52
		Fishery	1
		Fruits Farming	3
		Herbs Farming	2
		Tree Contract	1
		Vegetable Farming	211
		<b>Total of Agriculture &amp; Others</b>	<b>296</b>
Siraha	Animal Husbandary	Animal Insurance	2
		Animal Treatment Fund	27
		Buffalo Raising	943
		Buffalo Shade	3
		Cow Raising	545
		Fooder	3
		Goat Raising	4570
		He Bufallo Raising	14
		Ox Raising	226
		Pasture Land	3
		Pasture Land Support	1
		Pegion Raising	5
		Pig Raising	408
		Pigeon Keeping	60
		Poultry	2325
		<b>Total of Animal Husbandary</b>	<b>9135</b>
Siraha	Capacity Building	Account And Store Mgt Training	28
		Account Keeping Training	2
		Agro Forestry Training	2
		Animal And Market Dev Training	3
		Animal Health Training	10
		Animal Husbandary Training	67
		Animal Raising Training	116
		Asparagus Managemet Training	2
		Asparagus Marketing Training	2
		Buffalo Raising Training	2
		Capacity Building Training	18
		Carpentary Training	1
		Child Literacy Class	36

Siraha	Capacity Building	CO Management Training	42
		Community Awareness Training	3
		Cycle Maintenance Training	1
		Driving Training	2
		Fertilizer Prodn Training	8
		Gender Equality & Dev. Trg	47
		Goat Raising Training	26
		Group Mgmt. And Leadership Trg.	171
		Health And Sanitation Training	19
		JTA Training	120
		Leadership Training	7
		Literacy Class	202
		Market Management Training	9
		Nanglo Making Training	1
		Nursery Management Training	8
		Off Season Veg Farming Training	8
		Organisation Management Training	5
		Pasture Land Mgt. Training	6
		Pig Raising Training	3
		Plantation Training	1
		Retail Business Training	2
		Rikshwa Maintenance Training	1
		Saving & Credit Mgmt. Trg.	80
		Skill Development Training	1
		Study Tour	11
		Tapari Training	1
		Vegetable Farming Training	25
		Vegetable Storage Training	7
		Vetnery Training	1
		Women Health Training	2
		Women Skill Development Training	1
		<b>Total of Capacity Building</b>	<b>1110</b>
Siraha	Infrastructure-IG	Culvert	1
		Infrastructure Design-IG	2
		Irrigation	1
		Rice Mill	3
		Road	4
		Water Pump	4
		Well	2
		<b>Total of Infrastructure-IG</b>	<b>17</b>
Siraha	Infrastructure-Social	Electricity	2
		Hand Pump	39
		Infrastructure Design-Social	14
		Road Estimate Cost	7
		School Building/Room	1
		Toilet	1
		Tube Well	11
		<b>Total of Infrastructure-Social</b>	<b>75</b>
Siraha	Manufacturing & Others	Carpentary	8
		Doko Namlo Rope	5
		Furniture Business	10
		Metal Products Production	2

		Muda	1
		Nanglo	2
Siraha	Manufacturing & Others	Sweet Shop	2
		Tapari	4
		Titaura	1
		<b>Total of Manufacturing &amp; Others</b>	<b>35</b>
Siraha	Service Sector	Band Baaja	1
		Bicycle And Motorcycle	6
		Bus Truck Maintenance	1
		Cart Service	5
		Cycle Maintenance	8
		Hotel	4
		Motorcycle Maintainance	1
		Plumber Instruments	5
		Radio TV Maintenance	1
		Rikshwa	224
		Rikshwa Maintainance	1
		Saloon	1
		Screen Print	1
		Sewing Machine	10
		Sheltering Business	1
		Tailoring	29
		Tea Shop	2
		<b>Total of Service Sector</b>	<b>301</b>
Siraha	Social Service	Birth Certificate And Citizenship	2
		Health And Sanitation	44
		Revolving Fund	6
		Scholarship	5
		<b>Total of Social Service</b>	<b>57</b>
Siraha	Trading	Aggregate	13
		Agricultural Input Business	1
		Animal Business	180
		Bamboo Business	3
		Cloth Business	6
		Egg Business	100
		Fancy Shop	3
		Fish Business	3
		Fruits And Vegetable Shop	5
		Fruits Shop	1
		Herbs Business	1
		Jewelry Shop	10
		Manihara Business	6
		Masala Udyog	1
		Meat Shop	1
		Medicine Shop	2
		Micro Enterprise	16
		Paan Shop	1
		Retail Business	634
		Rice Business	28
		Shoe Shop	1
		Thela Business	2
		Tobacco Business	1

		Vegetable Shop	11
Siraha		Wood Business	5
		<b>Total of Trading</b>	<b>1035</b>

## Annex-VI: POs, COs and Coverage

District	No. of Working Pos	Total VDC + Municipality in District	PO Committed No. of VDC	CO Working VDC	Sub Proj. No.		Beneficiary	
					IG	Infra	CO Member	Total Beneficiary
<b>Initial 6 Districts</b>								
Darchula	14	41	41	41	311	117	8,518	12,466
Kapilbastu	11	78	47	47	476	374	13,365	22,840
Mugu	6	21	19	21	101	57	3,941	5,263
Pyuthan	12	49	30	30	220	38	6,730	7,447
Ramechhap	13	55	42	37	248	38	6,620	6,621
Siraha	20	108	57	46	401	224	10,464	11,687
<b>Sub Total =</b>	<b>76</b>	<b>352</b>	<b>236</b>	<b>222</b>	<b>1,757</b>	<b>848</b>	<b>49,638</b>	<b>66,324</b>
<b>19 Additional Districts</b>								
Achham	7	75	27	27	228	9	6,683	7,485
Baitadi	7	63	30	30	112	6	4,249	4,050
Bajhang	3	47	18	11	38	24	1,265	2,315
Bajura	4	27	20	20	134	25	4,274	6,211
Dadeldhura	8	21	16	16	135	1	3,756	3,714
Dailekh	5	56	10	10	107		3,705	3,705
Dolpa	3	19	9	9	74		2,330	2,320
Doti	5	51	21	21	151	1	4,816	4,856
Humla	5	27	11	10	98	18	2,310	2,774
Jajarkot	8	30	26	26	139		5,114	5,261
Jumla	7	30	14	15	56	29	2,202	2,198
Kalikot	6	30	4	18	104		3,747	3,747
Mahottari	12	77	23	22	306	1	7,800	7,508
Rasuwa	7	18	14	14	155	8	4,245	4,456
Rautahat	9	97	27	24	258		7,382	7,376
Rolpa	1	51	4	1	7		210	210
Rukum	4	43	12	10	71		2,133	2,170
Sarlahi	15	100	35	36	159		4,767	4,633
Sindhuli	9	54	24	24	254	5	8,800	8,307
<b>Sub Total =</b>	<b>125</b>	<b>916</b>	<b>345</b>	<b>344</b>	<b>2,586</b>	<b>127</b>	<b>79,788</b>	<b>83,296</b>
<b>Innovative Programme Districts</b>								
Baglung		60	0	1		1	13	142
Nawalparasi		74	0	1		1	11	705
Rasuwa		18	0	1		1	11	384
Surkhet		48	0	1		1	9	655
Chitawan	1	38	5	4	9	2	203	250
Dhading	1	50	5	5	29		835	784
Jumla	1	30	5	2	37	33	1,344	1,344
Kanchanpur	1	20	20	8	76		1,808	1,871
Kavrepalanchok	1	90	0	1	1	1	11	125
Lalitpur	1	42	1					
Makwanpur	2	44	10	14	29	12	1,038	1,068
Morang	3	65	3	3	61	45	2,301	2,310
Sarlahi	1	100	5	5	27			
Siraha	1	108	2				665	734
<b>Sub Total =</b>	<b>13</b>	<b>787</b>	<b>56</b>	<b>46</b>	<b>269</b>	<b>97</b>	<b>8,249</b>	<b>10,372</b>
<b>NDM</b>	<b>12</b>		<b>22</b>					
<b>Total =</b>	<b>226</b>	<b>2,055</b>	<b>659</b>	<b>612</b>	<b>4,612</b>	<b>1,072</b>	<b>137,675</b>	<b>159,992</b>



## Annex VII: Social Inclusion Strategy Reaching the Poor

<u>Targeting Sequence</u>	<u>Key Actor</u>	<u>Tools/Methods</u>
<b>Districts</b> ↓	PAF Management	Development Indicators (CBS)
<b>VDCs</b> ↓	Service Agency Portfolio Manager	VDC Prioritization District-Level Stakeholders' Consultation
<b>Wards</b> ↓	Partner Organization (PO)	VDC-Level Interaction
<b>Settlements</b> ↓	Partner Organization (PO)	Ward-Level Interaction Settlement-Level Sensitization Settlement Social Mapping Social Assessment/ Wellbeing Ranking
<b>Community Organizations</b> ↓	Community Org. (CO)	Identification of Target Households Formation of COs Registration of COs
<b>Target Beneficiaries</b>	Community Org. (CO)	Project Development Community Action Plan