

## **Poverty Alleviation Fund (PAF) Program Implementation Status**

**(as of 16 July 2010 and FY 2009/10)**

Poverty Alleviation Fund (PAF) is implementing targeted demand-driven community based program. It directly supported third pillar of Tenth Plan/ Poverty Reduction Strategy Paper-PRSP of the Government of Nepal (GoN) and supporting the social inclusion/ targeted program of the Three Year Interim Plan (Annex-I: PAF program at a glance). It aims to improve access to income-generation and infrastructures for groups that had tended to be excluded by reasons of gender, ethnicity and caste, as well as for the poorest groups in communities.

Presently PAF is implementing its program in 59 districts. Initially it selected six districts viz. Darchula, Mugu, Pyuthan, Kapilbastu, Ramechhap and Siraha for programme implementation. In the FY 2062/63 (2005/06 AD), 19 additional districts were selected (*Achham, Baitadi, Bajhang, Bajura, Dadeldhura, Dailekh, Dolpa, Doti, Humla, Jajarkot, Jumla, Kalikot, Mahottari, Rasuwa, Rautahat, Rolpa, Rukum, Sarlahi and Sindhuli*). Further, PAF initiated its program in additional 15 districts from FY 2065/066 (*Okhaldhunga, Bara, Khotang, Salyan, Saptari, Udaypur, Solukhumbu, Sindhupalchowk, Panchthar, Dhanding, Taplejung, Parsa, Bardiya, Dhanusha and Terhathum*). With this, PAF now covers, as PAF regular program districts, all the 25 districts from Group-C and 15 districts from Group-B categorized as most deprived districts by CBS/NPC (Central Bureau of Statistics – National Planning Commission) based on 28 poverty related social-economic indicators (**Annex-XVII**). Besides working in these regular program districts, PAF is implementing innovative pocket programme in other 19 districts as well under the special innovative window programme to capture replicable innovative initiatives to reach to the poor. The current PAF program districts are shown in **Annex-II**.

### **Program Implementation through Community Organizations: Demand-Driven Community Proposal and Direct Funding**

As of this report period 14,827 community organizations (COs) of poor are registered in PAF (5,521 in Initial 6 Districts, 8,696 in Additional 19 Districts, 172 in Additional 15 Districts and rest 438 are through Innovative Window Programme Districts). Accordingly, community proposals are also prepared with participatory planning process. Out of the total registrations, PAF made agreement with 14,006 COs (5,248 are in Initial 6 Districts, 8,239 in Additional 19 Districts, 96 in Additional 15 Districts and rest 423 in Innovative Window Programme Districts) and community are implementing the sub-projects (A district wise details on COs registration and agreement are shown in **Annex-V**). Based on community demand, several different activities related to Income Generation (IG) and Infrastructure sub-projects are proposed and included in the program implementation. Income generation activities are related to agriculture, livestock, cottage industries, trade and skill based services. Similarly, infrastructure are related to micro-irrigation, link road, culvert/bridge, rope way, electricity/micro-hydro, water mill, water supply, sanitation, school and health post building. Program activities, in general, being implemented by the community are listed in **Annex-III**.

The agreement made with 14,006 COs amounts to NRs. 7,630 M and it is in the process of disbursement to Community Accounts. Till date NRs **6,149 M** is disbursed to community operating account. The community fund flow modality is shown in **Annex-IV** and details on CO agreement and disbursement status is shown in **Annex-V**.

In FY 2061/62 (2004/05), the agreements were made with 595 COs amounting to NRs. 240 M in the FY 2062/63 (2005/06), the agreement was made with 1,070 additional COs amounting to NRs 526M, in FY 2063/64 (2006/07), the agreement is made with 3,311 additional COs amounting to Rs. 1,347 M, in FY 2064/65 (2007/08), the agreement is made with 2,808 additional COs amounting to Rs. 1,491 M, in FY 2065/66 (2008/09), the agreement is made with 2,764 additional COs amounting to Rs. 1,574 M, and in this FY 2066/067 (2009/10), the agreement is made with 3,458 additional COs amounting to Rs. 2,452 M (**Annex-V(2)**).

The community sub projects are in different stages of implementation. Second level of demand and proposals are also started receiving upon completion of first sub projects. Communities also start to build federations, network of COs and co-operatives. Communities have undertaken 13,810 Income Generation related sub-projects and 2,740 Infrastructure related sub-projects till date. A list of completed sub-projects and physical achievement of sub-projects are provided in **Annex-VI**.

The COs and agreement with COs consist of innovative pocket program in 10 additional districts. Details on innovative program is provided in **Annex-VII**.

Additionally, PAF considered financing 12 out of 20 winning innovative proposals of Nepal Development Market Place (NDM) -World Bank 2005. Agreements were made with those 12 POs that amounts NRs. 16 M to work in 25 Village Development Committee (VDC) of *Bajura, Dolakha, Kathmandu, Myagdi, Parsa, Saptari, and Syangja* districts serving about 8,999 poor households (**Annex-VII**). Till date, **NRs. 14.30 M** is disbursed. Further PAF monitored the World Bank financed remaining 8 NDM projects in Dang, Khotang and Tanahun districts.

PAF considered financing 25 winning innovative proposals of Nepal Development Market Place (NDM)-World Bank 2008. Agreements are made with those 25 Partner Organizations (POs) that amounts NRs. 34 M to work in 52 VDC of *Chitawan, Dhading, Dhanusa, Dolakha, Jhapa, Kalikot, Kanchanpur, Kathmandu, Kavrepalanchok, Khotang, Lalitpur, Morang, Mugu, Panchthar, Parbat, Sankhuwasabha, Sarlahi and Solukhumbu* districts serving about 5,228 poor households (**Annex-VII**). Till date, **NRs. 31.83 M** is disbursed and implementation is in different stages.

In overall, PAF achieved both physical and financial target of the program for the FY 2066/67. The district wise program progress status against the target for the FY 2066/67 is shown in **Annex-XV(2)**.

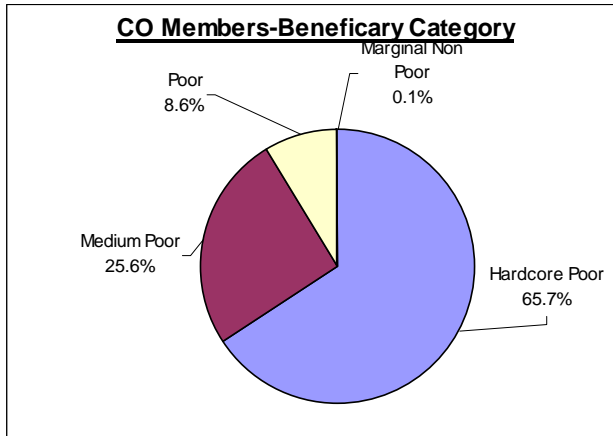
## **Facilitation and Community Support through Partner Organizations**

Partner Organizations (POs) selected by PAF are facilitating Community Organisations (COs) of Poor. The facilitation being carried out by POs are in organising COs, their capacity development, planning activities, carryout detailed feasibility, survey design & estimates, and proposal preparation during preparatory phase, and provide technical assistance and monitoring feedback support during implementation phase. As such, 372 Partner Organizations (POs) are working with communities (71 for Initial 6 Districts, 160 for Additional 19 Districts, 130 for 15 B1 Districts, 11 for Innovative Window program). Further, 37 POs have worked for Innovative NDM-World Bank Programme. 14 POs are terminated due to their poor performance, so far.

Till date POs facilitated in total 1,578 VDCs (328 in Initial 6 Districts, 733 in Additional 19-Districts, 457 in 15 B1 Districts, 60 in Innovative Window Programme Districts) and Community Organizations of Poor (COs) are working in those VDCs. Till date 543,263 households (HHs) are

served (194,481 HHs in Initial 6 Districts, 28,230 HHs in Additional 19 Districts, 3,033 in Additional 15 B1 Districts and 17,519 in Innovative Window Program Districts). Additionally 14,227 HH are also benefitted through NDM-World Bank Programme in 77 additional VDCs. A detailed district wise PO, COs and coverage are shown in **Annex-VIII**.

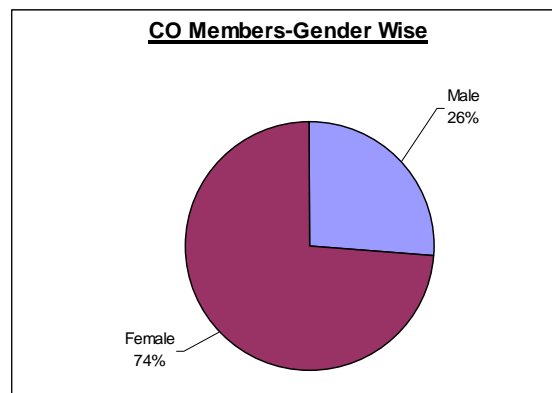
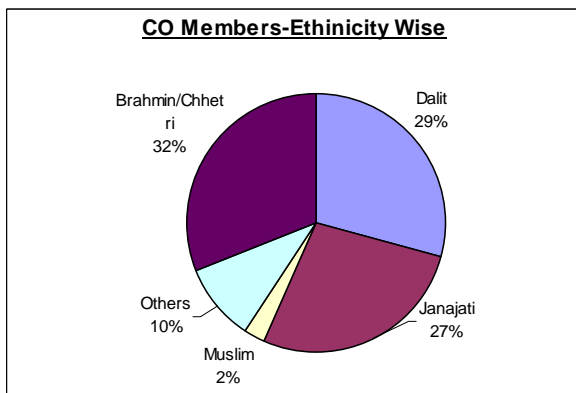
## Reaching out to Excluded Poor Community Beneficiaries and Social Inclusion



PAF has taken the strategy to support the idea that poor community should be organized themselves to prepare, implement and manage their program and they should be in the driving seat, with decision making authorities. A social inclusion strategy to reach out to the poor specifically poor women, dalit and janjati are taken (**Annex-IX**). Districts are being selected from the bottom as categorized by the CBS/ NPC based on composite index of 28 different poverty related social economic indicators (**Annex-XVII**). PAF now reached 40 districts from the bottom.

Within the districts, VDCs are prioritized based on similar poverty related 17 social economic indicators in 5 category (**Annex-XVII**) where more weightage is given to vulnerable community specific indicators (**Annex-XVII-1**). The PAF program are intervened in sequence based on the set priority with minor adjustment based on discussion at DDC level. Within the VDC, stakeholder meeting at VDCs level maps settlements and prioritize based on poverty and settlement with more socially excluded groups such as *dalits* and *janajati*.

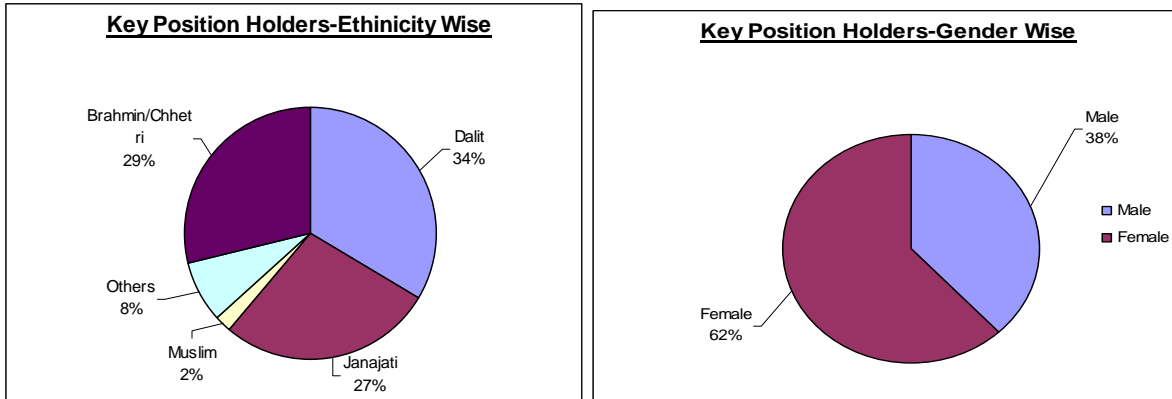
Participatory social assessment and community well-being ranking process identified the poor community members as primary beneficiaries at the settlement level. In an average about 57% of the settlement households are identified as poor households. They are organized into community organization to plan, implement and manage the sub-projects. In total PAF covered 400,818 poor HHs as CO member beneficiary. Among beneficiaries members in Community Organizations of Poor (COs), 65.7% members falls under hardcore poor category (food sufficiency less than 3 months among criteria fix by community), 25.6% members falls under medium poor category (food sufficiency more than 3 months but less than 6 months among criteria set by the community), 8.6% members falls under poor category (food sufficiency more than 6 months but less than a year among criteria set by the community) and 0.1% members falls under marginal



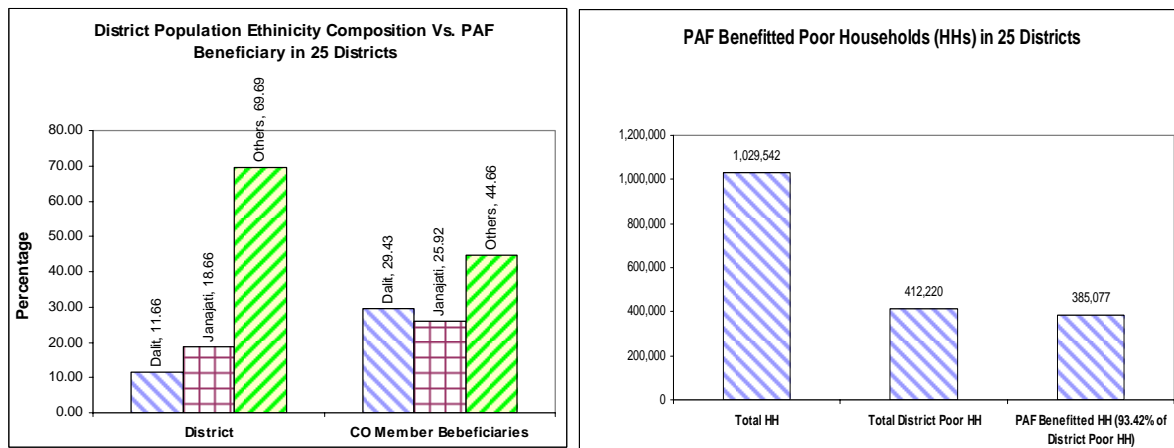
Non-poor Category.

Likewise, CO member households constitutes 29% dalit, 27% janajati, 2% Muslim, 32% Brahmin/Chhetri and 10% Other ethnicity. Gender wise, 74% are female members in COs.

Similarly, the key position holders in the community organisation such as President, Treasurer, Secretary constitutes, 34% Dalit, 27% Janajati, and 2% Muslim and 29% Brahman/Chettri, and 8% other ethnicity. Gender wise, 62% are female key position holders in COs.



When percentage beneficiary of PAF by ethnicity is compared with district percentage ethnicity composition as shown in the graph below it is clear that PAF is focusing on socially excluded group such as Dalit and Janajati. In an overall, PAF till now benefited 93.42% of poor households in 25 districts (385,077 Poor HHs out of 412,220 poor HHs in 25 districts). PAF is working in 83% of VDCs in 25 regular PAF districts (1,061 VDCs out of 1,275) and 48% VDCs in 15 additional PAF regular districts (457 out of 941 VDCs).



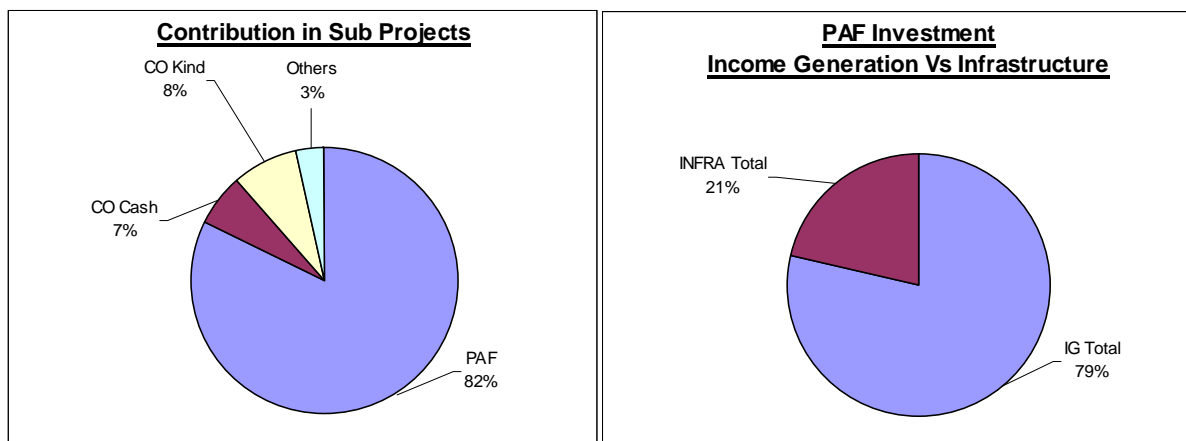
All five districts of the Karnali zone are covered by the program. Till date program reached 129 VDCs i.e. 96% of 134 VDCs in Karnali and benefited 50,924 poor households (**Annex-X**).

Program covered Ten (10) districts in Terai (Mahottari, Rautahat, Sarlahi, Kapilbastu, Siraha, Bara, Bardiya, Dhanusa, Parsa, Saptari) and benefitted 122,394 HHs covering 307 VDCs (i.e. 13% of poor HHs and 34% of VDCs). Out of 62 border VDCs of Kapilbastu, Mahottari, Rautahat, Sarlahi and Siraha among above Terai districts, PAF program covered 44 VDCs (i.e. 71%) and benefitted 14,287 HHs (i.e. 28% of poor HHs in border VDCs) (**Annex-XI**)

Further, innovative pocket program is running in Morang, Kanchanpur and Chitwan districts. It reached additional 6,913 poor households in 18 VDCs in those districts.

### Program Cost Sharing

PAF is investing 82% (i.e. Rs. 7,630 M) of the total sub-project cost. Community sharing is 15% (7% in Cash— i.e. Rs. 609 M and 8% in Kind—i.e. Rs. 750 M) of the total sub-project costs whereas other collaborating organizations mainly VDC/DDC (Village Development Committee/District Development Committee) are sharing 3% (i.e. Rs. 302 M) in total sub-project cost. In Income Generating sub projects, community is sharing 9% in cash (Rs. 589 M) and 3% in kind (Rs. 206 M) whereas in Infrastructure sub projects, it is 1% in cash (Rs. 20 M) and 22% in kind (Rs. 544 M). Apart from community contribution, DDC/VDC are sharing 3% of the cost and other collaborating partners are sharing 9% of the cost in infrastructure sub-projects.



Out of the total PAF investment, 79% is in Income Generating sub-projects and 21% is in Infrastructure sub-projects. About 88% of the PAF investment in Income Generating Sub-projects are established at Revolving Fund at community level being managed by COs. The sub-project activities undertaken are shown in **Annex-III**.

### Collaboration in sub-project Implementation

The collaborative efforts are going on to supplement and complement with different program running in the district to bring discernible impact in considerably less time. There are several examples of collaboration with line agencies, local governments and donor agencies to implement the program and sub-projects in the communities at district level. Some of the collaboration efforts at district are shown in the table provided in **Annex-XII**.

Several Memorandum of Understanding (MoU) has also been signed with different organizations at central level to facilitate different task as well as to facilitate collaboration in implementation of sub-projects at community level.

- MoU with Rastriya Banijya Bank (RBB), as a PAF development partner, is renewed and made recently similar agreement with Nepal Bank Limited (NBL) that includes 5 districts (Dolpa, Jajarkot, Rasuwa, Rolpa and Rukum) where RBB branch do not exists and provide alternate in other districts for enabling efficient fund flow to the accounts of community organizations of the poor.
- MoU is signed between South Asia Foundation, CTEVT, Jiri Technical School and Himalyan Health and Education, Solukhumbu in order to utilize Madanjeet Singh Scholarship for ANM (Auxillary Nurse Midwife) in PAF districts
- MoU is signed with Alternate Energy Promotion Centre (AEPC) on August 10, 2007 for mutual collaboration in PAF and AEPC program area to enable poor access to micro-hydro and other alternative energy projects
- MoU is signed with WINROCK on October 27, 2007 for the implementation of ICT GDA project in Bajhang and Achham districts.
- MoU is signed with ROTARY Club and Kavre Health Training Institute for utilizing ROTARY ANM Scholarship and follow-up support program in PAF districts.
- MoU is signed with Winrock International's (WI) Renewable Energy Project Support Office (REPSO) Nepal on April 21, 2008 to promote Jatropa oil based pump irrigation systems for improving income generation of poor farmers through increased agricultural productivity in Siraha district.
- MoU is signed between Department of National Parks and Wildlife Conservation (DNPWC) and PAF on May 2, 2008 in order to collaborate and enable to implement PAF program in protected areas.
- MoU is signed with Winrock International's (WI) for the rural ICT activity in Marku VDC of Achham District through Shanti Secondary School

An understanding was signed by PAF in a meeting at Ministry of Finance with Ministry of Local Development (MLD) to enhance co-ordination with Local Bodies at district on April 1, 2008.

Further PAF is taking initiative to collaborate with Ministry of Education and Centre for Non-Formal Education; Department of Livestock and Department of Agriculture under the Ministry of Agriculture and Co-operatives. Similarly effort is going on to collaborate with Department of Irrigation; Leasehold Forestry and Livestock Programme-Department of Forest; Western Upland Poverty Alleviation Program (WUPAP), World Food Program (WFP); and USAID project Education for Income Generation.

A national level co-ordination workshop was carried out in order to implement the program more effectively in co-ordination with the government line agencies.

## **Community Institutional Development**

Community institutionalization process is also emerging in some of the districts where community felt need to federate themselves for certain function. Multi-purpose co-operatives, co-operatives for single function and federation of COs are formed as per communities' felt need. Informal networks of COs are being formed in each VDC, in the process of institutionalization. The table in **Annex XIII** shows institutions formed and objectives of those institutions.

## Outcomes

The recent study<sup>1</sup> finding shows that the Household (HH) consumption in PAF program area is increased by 23%. Improvement in consumption among beneficiaries of PAF program area is higher by 45% compared with non-participants (control district).

Households (HHs) with food sufficiency of less than 3 months and 4 to 6 months are decreased by 3.2% and 1.6% respectively, whereas HHs with food sufficiency 7 to 9 months and 10-12 months are increased by 1.3% and 3.5%.

Similarly, HH income in PAF Program Area is increased by 19%. The HH expenditure in Child Education has been increased by 54%. Under five child mortality is decreased by 58%.

The study also shows that discrimination faced by HH members are decreased by 7%, and discrimination faced by community members decreased by 15%. The women participation in social/development organization is increased by 45%.

A summary table with some of the key findings of follow-on impact survey are provided in [Annex-XIV](#). The WB evaluation based on same study data indicates that on an average, the net impact of PAF was about 7 percent point in the growth rate of per capita consumption.

Recently, another follow-on survey focusing on 19 additional district are being carried out.

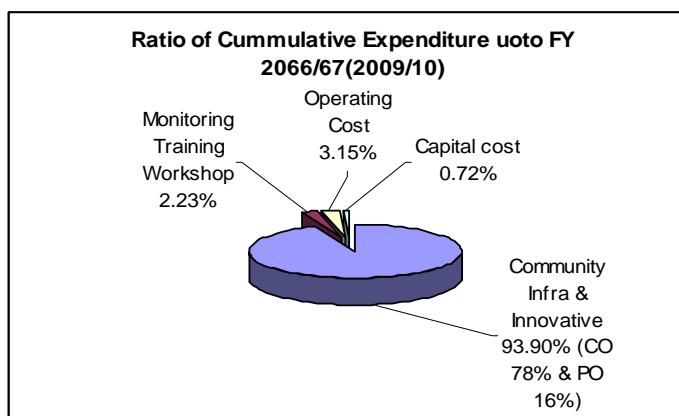
## Budget Expenditure

The total expenditure in FY 060/61 (2003-04), FY 2061/62 (2004-05), FY 2062/63 (2005-06), FY 2063/64 (2006-07), FY 2064/65 (2007-08), FY 2065/66 (2008-09) and FY 2066/67 (2009-10) were NRs.5.78M, NRs. 247.32 M, NRs. 493.50 M, NRs 1,210.30 M, NRs. 1,875.48 M, 1,647.20 M and 2,481.5 M respectively.

In FY- 2066/67 (2009/10), total PAF expenditure of NRs. 2,481.5 M which is 91.09% of allocated budget.

Total expenditure of PAF till FY 2066/67 is NRs. 7,960 M.

Out of the total PAF expenditure of NRs. 7,960.65 M till FY 2066/67 (2009-10), 93.90% was in Program Implementation through CO & PO(CO-78% & PO-16%), 2.23% in Monitoring, Training, Studies and Other Program Support, 0.72 % in capital investment for PAF and 3.15% in PAF operation/ recurrent cost.



<sup>1</sup> Central Department of Population Studies at Tribhuvan University (TU) carries out baseline survey (2006) and follow-on survey (2008/9) on a sample of about approximately 2000 households in about 150 villages (also the primary sampling units, PSU) from nine districts located across different geographic regions of the country.

Out of the total expenditure of FY 2066/67(2009/10), 96.52 % is from IDA (International Development Agency- the World Bank) grant, 2.80% is from IFAD (International Fund for Agriculture Development) grant and the rest 0.69 % from GoN (government of Nepal) source. The details on Program Implementation and Funding Status of FY 2066/67 is shown in **Annex-XV**.

Currently the PAF Project II is funded by IDA Grant with US\$ 100 M and IFAD Grant of US\$ 4 M for four years till January 2012. IDA disbursement to this PAF project till date is **58.29 %** (as advance) i.e. equivalent to about **US\$ 58.29M**. IFAD disbursement to PAF till date is **US\$ 7.5M**. The PAF II physical progress status against the performance indicators are shown in **Annex-XVI**.

IDA grant for PAF Project I of US\$ 40 M (Initial US\$ 15 M and Additional US\$ 25 M) has been made utilised by January 2009.

## **Lessons and Challenges**

There is a high demand for the programme as the sub-projects originate at grass-root levels. Communities have demonstrated their keen interest to undertake the programme and make necessary contributions. The current challenge is to make a trade-off between rapid implementation and institution building enhancing the technical capability of the community organizations. In view of the wide varieties of activities undertaken within the sub-project, the challenges faced for sustainability of the sub-projects are:

- Linkage with market for sustaining income-generating activities.
- Providing appropriate technology support for different activities including linkages with existing service structure
- Availing Insurance Safety-Net particularly for livestock
- Exploring an alternative to livestock based activities for landless poor
- Building Community Capacity to Manage Revolving Fund and Operate the Sub-Projects
- Raise awareness of community through functional literacy
- Raise awareness on health and hygiene

While working towards above challenges, it is inevitable to work with diversified groups of poor communities supporting each other and network for linkages and collaboration with other programmes and line agencies to support communities in different areas of strength of these programmes. Further, legal institutionalization of Community Organizations through coalition or formation of functional co-operatives and establishment of strong linkages with VDC/ DDC are also important for sustainability and long-term support to these community groups.

PAF is working with its exit strategy focusing on its strategic thrust to enable community to go to sustained path to get out of poverty within a stipulated 5-6 years of time. In this line, PAF need to work on pocket area development approach as well building on the potential strength of the area.

Monitoring, Research and Development needs to be strengthened further to support the implementation including capacity building of main actors i.e. CO, PO, Local Bodies and PAF.

Based on lessons learned, PAF will take following strategies:

- Expansion of PAF program in new VDCs and districts

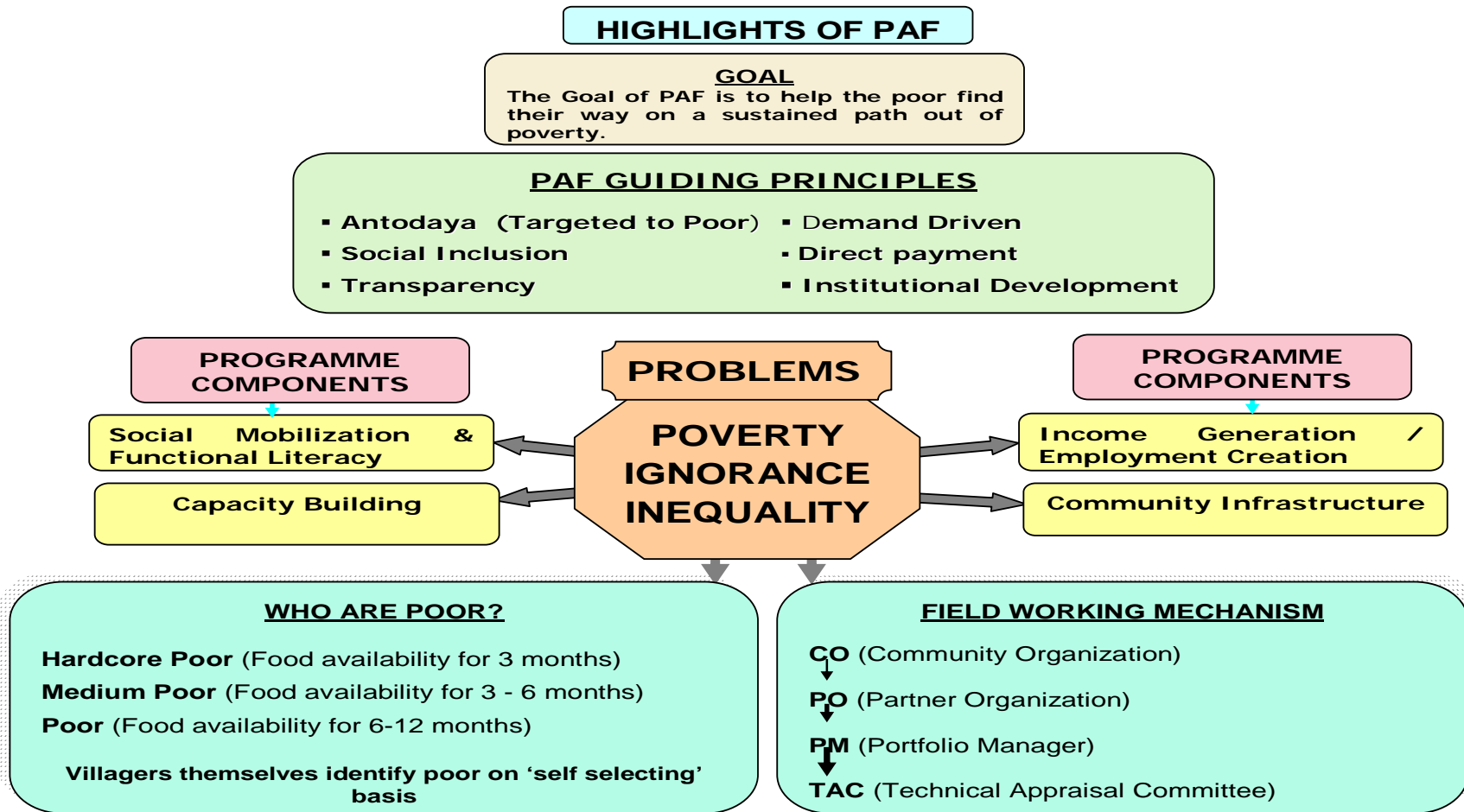


- Institutionalization of Community Organizations as co-operative or other forms of institution as per their decision and link with financial institution and markets where program is already in implementation
- Capacity Building of community organization, partner organization and PAF
- Co-ordination and collaboration with other agencies to bring discernible impact in considerably less time
- Strengthen monitoring evaluation based feedback and learning
- Advocacy of PAF in order to spread its knowledge and working modalities

### **Future Program District Coverage Plan**

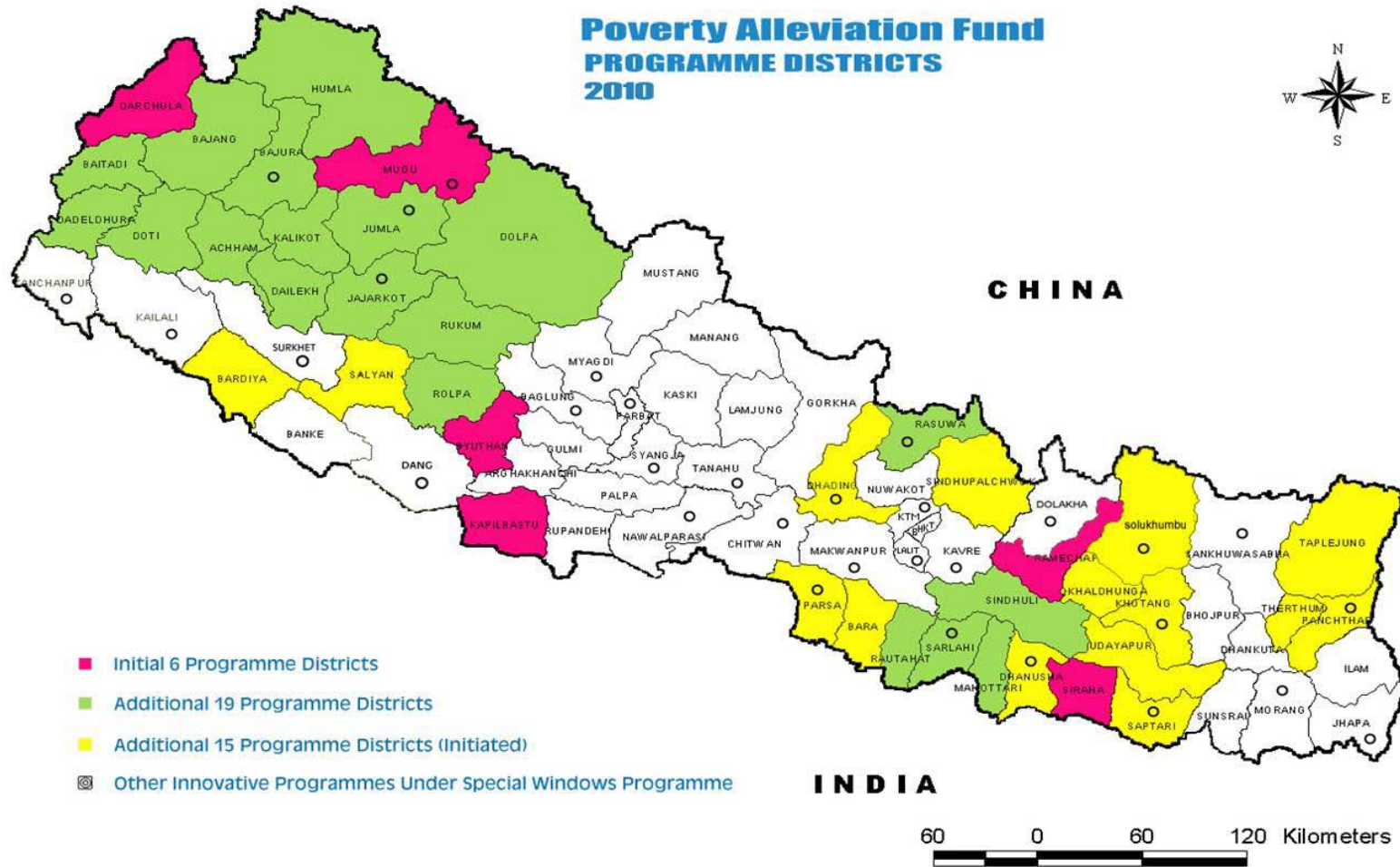
PAF has planned to cover all 75 districts in future. Program expansion in additional 15 districts is initiated in the Fiscal Year 2065/66 (2008/09) and Partner Organizations (POs) are identified in FY 2066/67. Program will be expanded in additional 15 districts in FY 2067/68 (2010/11) from the list of deprived districts categorized by CBS/NPC based on 28 poverty related socio-economic indicators (**Annex-XVII**) and remaining 20 districts will also be covered through poverty pocket approach. The phasewise PAF program district coverage plan are shown in the map in **Annex-XVIII**.

## Annex I: PAF Program at a Glance



Poverty Alleviation Fund is created by the Government of Nepal under separate PAF Act as an autonomous institution to implement targeted program

## ANNEX-II: PAF Programme Districts



## Annex III: Sub Project Activities

### INCOME GENERATION

#### Agriculture

- Agro Forestry
- Apple Farming
- Asparagus Farming
- Badam Farming
- Banana Farming
- Bee Keeping
- Cardamom Farming
- Cereal Crops Farming
- Dhaki Okhal
- Fishery
- Fruits Farming
- Ginger Farming
- Green House
- Herbal Nursery
- Herbs Farming
- Land Management
- Lokta Farming
- Maize Cultivation
- Mushroom Farming
- Nursery
- Off Season Veg Farming
- Orange Farming
- Power Treller (Tractor)
- Rice Farming
- Spray Machine
- Sugarcane
- Taar Bar
- Tree Contract
- Vegetable Farming

#### Livestock

- Animal Insurance
- Badel Raising
- Buffalo Raising
- Buffalo Shade
- Chicken Cage Construction
- Cow Raising
- Cow Shade
- Dairy Firm
- Donkey Raising
- Duck Raising
- Duck, Pigeon, Chicken Shade
- Fodder Management
- Goat Raising
- Goat Shade
- He Buffalo Raising
- Horse Raising
- Mule Raising
- Ox Raising
- Pari Raising
- Pasture Land Support
- Pig Raising
- Pig Shade
- Pigeon Keeping
- Pigeon Raising
- Poultry
- Rabbit Keeping
- Sheep Raising
- Veterinary Equipment
- Yak Raising

#### Manufacturing

- Agri Tools
- Bag Making
- Bread Udyog
- Briquette Making
- Candle Udhoyog
- Carpet
- Chiura Udyog
- Clay Utensils
- Cloth Udhoyog
- Dalmoth Udhoyog
- Dhaka Weaving
- Doko Namlo Rope
- Essence Making
- Farma
- Fertilizer Production
- Fiber Material Making
- Fruit Purify Centre
- Furniture/Carpentry
- Garment
- Ice Cream, Kulfi, Chaat
- Juice Production
- Madal
- Masala Udyog
- Metal Products Production
- Micro Enterprise/Cottage Industry
- Misc. IG
- Muda Making
- Nanglo Making
- Nepali Paper Udhoyog
- Noodles Making
- Pickle Udhoyog
- Potato Chips Making
- Pottery (Manufacture)
- Radipakhi Weaving
- Rope Making
- Shoe Making
- Soap Industry
- Stamp Making Shop
- Sweater Udyog
- Tapari
- Thanka
- Tile Making Industry
- Titaura
- Umbrella Udyog

#### Service

- Agrovat
- Auto Rickshaw
- Band Baaja
- Beauty Parlour/Saloon Service
- Bus/Truck Maintenance
- Cart Service
- Communication/PCO Service
- Computer Maintenance Centre
- Cycle Maintenance
- Dhalan Pharma
- Editing Classroom
- Goods Transportation
- Hotel
- House Wiring
- Improved Aran
- Laundry
- Lohari Giri
- Loud Speaker

- Masson Instruments
- Mechanical Workshop
- Mill (Kutani Pisani)
- Motorcycle Maintenance
- Painting
- Photo Studio
- Plumber Instruments
- Radio TV Maintenance
- Restaurant
- Rickshaw
- Rickshaw Maintenance
- Screen Print
- Sewing Machine
- Sheltering Business
- Solar Repairing & Maintenance Shop
- Tailoring
- Tea Shop
- Tent House
- Thela Gada
- Transportation Service
- Tripal
- Vehicle Maintenance
- Washing Machine
- Welding Shop

### **Trading**

- Aggregate Business
- Agricultural Input Business
- Animal Business
- Bamboo Business
- Bhujija Shop
- Book Shop
- Chuna Business
- Cloth Business
- Cooperative Shop
- Dry Fish Business
- Egg Business
- Electric Shop
- Fancy Shop
- Fish Business
- Fruits And Vegetable Shop
- Fruits Shop
- Galla Business
- General Stores
- Gold & Silver Shop
- Herbs Business
- Jewellery Shop
- Kawadi Business
- Kerosene Shop
- Leather Business
- Manihara Business
- Meat Shop
- Medicine Shop
- Metal Business
- Milk Business
- Mobile Retail Shop
- Paan Shop
- Plastic Shop
- Pottery Shop
- Purse, Belt Shop
- Retail Business
- Rice Business
- Seeds Business
- Shoe Shop
- Stationary Shop
- Sweet Shop
- Thela Business
- Tobacco Business
- Utensil Shop
- Vegetable Shop
- Veterinary Shop
- Watch Shop

- Wood Business

### **COMMUNITY INFRASTRUCTURE**

- Bio Diesel Expeller Machine
- Boring Pump
- Building
- Canal
- Dhikki Pump
- Ghatta
- Irrigation
- Irrigation Rehabilitation
- Milk Chilling Centre
- Plastic Pond
- Pond
- Pond Maintenance
- Pump Set/Motor
- Rice Mill
- Road
- Road Maintenance
- Solar System
- Water Pump
- Water Supply and Sanitation

### **CAPACITY BUILDING**

- Aamchi Training
- Account And Store Mgt Training
- Account Keeping Training
- Agro Forestry Training
- Agroviet Training
- Animal And Market Dev Training
- Animal Health Training
- Animal Husbandry Training
- Animal Insurance Training
- Animal Raising Training
- Asparagus Management Training
- Asparagus Marketing Training
- Awareness Training
- Banana Farming Training
- Beauty Parlour Training
- Bee Keeping Training
- Buffalo Raising Training
- Candle Making Training
- Capacity Building Training
- Cardmom Farming Training
- Carpentry Training
- Carpet Making Training
- Cemented Ring Making Training
- Child Development Programme
- Child Literacy Class
- CO Management Training
- Communication Training
- Community Awareness Training
- Compost Fertilizer Management Training
- Computer Maintenance Training
- Computer Operator Training
- Cottage Industry Training
- Cow Raising Training
- Cycle Maintenance Training
- Dairy Technician Training
- Dalmoth Making Training
- Diseases Prevention Training
- Driving Training
- Editing Training
- Electronics Training
- Environment Conservation & Food Mgmt. Training
- Fertilizer Production Training
- First Aid Training
- Fish Business Training
- Fishery Training
- Forest Management Training

- Fruits Farming Training
- Fruits Purify & Mgmt. Training
- Furniture Training
- Gender Equality & Dev. Training
- Ghatta Mgmt. Training
- Ginger Cultivation Training
- Goat Raising Training
- House Wiring Training
- Improved Stove Training
- JTA Training
- Kitchen Gardening Training
- Leadership Training
- Literacy Class
- Market Management Training
- Masson Training
- Mechanical Training
- Medical Mgmt. Training
- Metal Work Training
- Micro Enterprise Training
- Milk Business Training
- Misc. Capacity Building
- Nanglo Making Training
- Noodles Making Training
- Nursery Management Training
- Off Season Veg Farming Training
- Organisation Management Training
- Painting Training
- Pasture Land Mgt. Training
- Photographer Training
- Pickle Making Training
- Pig Raising Training
- Plantation Training
- Plumber Training
- Pond Maintenance Training
- Poultry Training
- Power Troller Mgmt. Training
- Project Management Training
- Pump Operation Training
- Rabbit Keeping Training
- Radio TV Maintenance Training
- Radipakhi Weaving Training
- Refreshment Training
- Repair And Maintenance Training
- Retail Business Training

- Goldsmith Training
- Group Management and Leadership Training
- Health and Sanitation Training
- Herbal Nursery Management Training
- Horse Raising Training
- Hotel Mgmt. Training

- Rickshaw Maintenance Training
- Saving & Credit Mgmt. Training
- Seed Development Training
- Sewing Cutting Training
- Sheep Raising Training
- Shoe Making Training
- Skill Development Training
- Soap Making Training
- Solar Maintenance & Repairing Training
- Stamp Making Training
- Study Tour
- Sudeni Training
- Tailoring Training
- Tap Maintenance Training
- Tapari Training
- Toilet Construction Training
- Vegetable Farming Training
- Vegetable Storage Training
- Vehicle Maintenance Training
- Veterinary Training
- Water Supply Maintenance Training
- Women Health Training
- Women Skill Development Training
- Wood Craft Training

#### **Social Service**

- Birth Certificate And Citizenship Regd.
- First Aid Instruments
- Furniture For Community Building
- Health and Sanitation
- Help To Disable People
- Scholarship
- School Furniture
- Stretcher

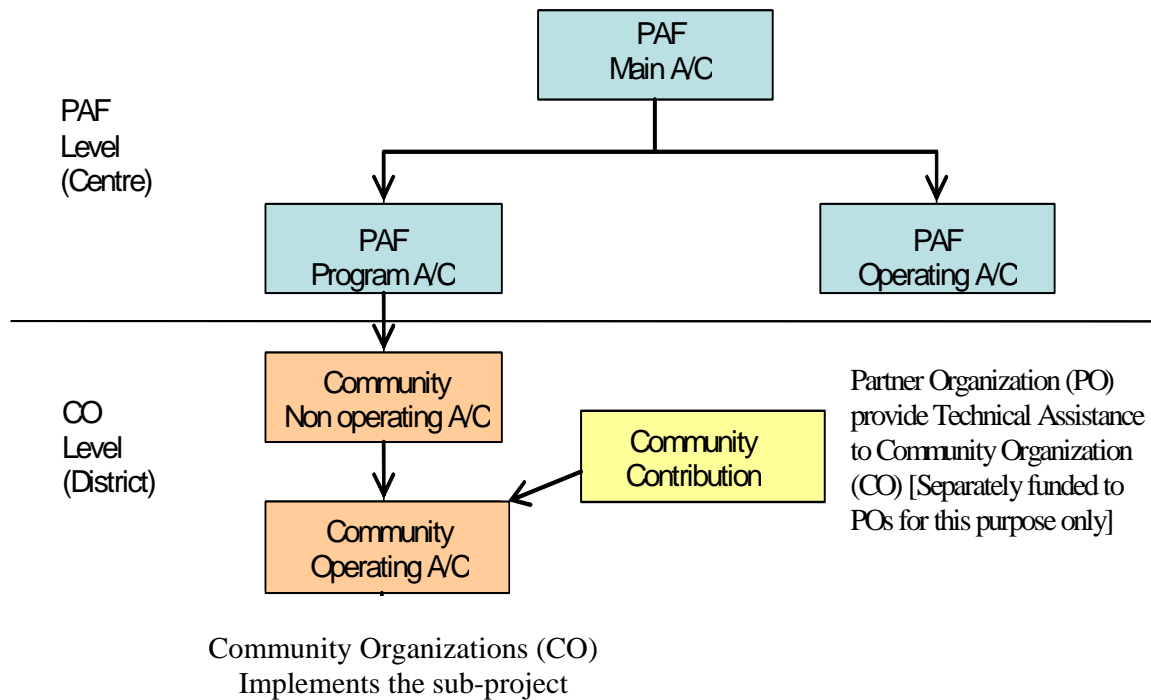
### ***NDM INNOVATIVE ACTIVITIES***

- Agro-Based Income Generation Project
- Benefiting Rural Areas through Wi-Fi Technology
- Briquette Production
- Cardamom Cultivation in Community Forest
- Fisheries for Livelihood of Women and Deprived Communities
- Healthy Women for Sustainable Development
- More Rice for Food Deficit people by using less inputs
- Orange and Coffee Production and Marketing Management
- Pigeon Keeping Project for Income Generating
- Pot-in-pot Evaporative Cooling Technology for Income Generation and Food Preservation
- Sustainable Safe Water Provision in Rural Parsa District
- Use of Local Resources for Sustainable Self-Independence
  
- "Light for All" Intermediate Technology for Long-Term Solution
- Allo Enterprise Resource Centre Under Women Cooperative
- Appropriate Utilization of Local Resources
- BLUE REVOLUTION
- Community-Based Tourism in Salpa-Arun Trek
- Himalayan Community Innovation Project
- Cows Urine, Source of Employment, Income and Organic Production
- Customary Business Promotion for Livelihood Improvement
- Economic Promotion & Community Pond-Protection Project
- Electric Rickshaw Redefining Transportation in Terai
- Ghatte Bijuli-Gaun Jhilimili
- Income Generating Agriculture for Livelihood Support
- Low-cost Organic farming: A New Way of Life
- Mushroom & Organic Vegetable Production for Poverty Reductions & Peace
- Pesticides/Insecticides Used Farming will be alone if our Organic goes from School to Home
- Pesticides/Insecticides Used Farming will be alone if our Organic goes from School to Home
- Promotion of Yak Through Tourism for Livelihood of People
- Rehabilitation of Displaced Single Women (Widows)
- Resham Koya Ko Mala (Silk Garland Production) Utpadan
- Riverbank Farming for Livelihood's Promotion in Terai
- Rural Bee Resource Centre for Employment of Women
- Soap Making for Income, Conservation and Hygiene
- Technology for Access, Access For Livelihood
- Use of Local Resources for Sustainable Self-Independence
- Using Common Salt to Treat Water for Drinking
- Waste Banana Stump Based Micro Enterprise

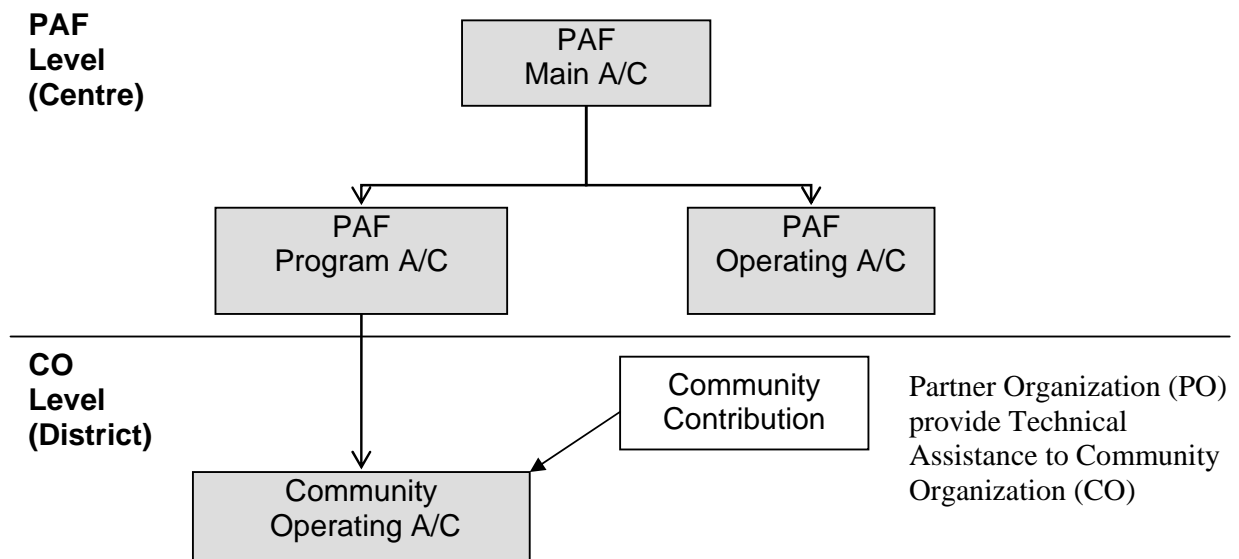
### ***OTHER INNOVATIVE ACTIVITIES***

- Micro-Hydro Power Project in collaboration with AEPC
- Vegetable Farming on Lease Land for Landless
- Uplift Chepang community people in Dhading district
- Creating and enbaling environment to the Dalit Community--"Mukta Kamayia"
- Lift Water Supply and enhanced livelihoods of Dalits, Ethnics and indigeneous people.
- Gaun besi ropeway programme for poverty alleviation
- Area Development in 11 VDCs: Integrating livelihood improvement of trival communities (Chepang and Tamang) through agro forestry, plastic water harvesting construction and link road construction
- Bankariya and Praja/Chepang improvement by livestock, agriculture, education and other income generating program support by locally available resources
- Targeted Vocational Education through Revolving Fund
- IG activities for poverty reduction--Livestock development, vegetable farming, etc.
- IG Programmes for poverty reduction--Making women starting business on agriculture trough Organic Farming
- Wire Bridge
- Irrigation Users' Group

## Annex IV: Funds Flow Modality to Community for Sub-Project Implementation



From FY 2066/67 (2009/10), non operating community account is removed. Funding are being transferred directly to community operating accounts.





## Annex V (1): CO registration, agreement for sub-project and disbursement status (cumulative)

District	CO Registered w/ PAF (No.)	Agreement			Disbursement		
		With CO	No.	Amount (NRs.)	Main to NOA (Deducting Refund amount)	NOA to OA	Direct OA
					Amount (NRs.)	Amount (NRs.)	Amount (NRs.)
<b>Initial 6 Districts</b>							
Darchula	885	867	1,223	556,218,213.61	293,930,857.17	292,024,488.82	118,447,304.60
Kapilbastu	828	810	853	473,099,922.79	341,318,845.01	339,141,857.41	79,175,959.41
Mugu	247	220	312	122,363,380.00	82,265,967.50	81,933,152.50	25,035,212.00
Pyuthan	1,115	972	1,129	550,945,775.87	370,808,960.15	363,839,974.15	133,377,127.46
Ramechhap	1,152	1,095	1,226	485,581,945.24	258,353,329.09	256,092,499.09	140,508,535.40
Siraha	1,294	1,284	1,307	502,217,832.68	329,741,345.78	321,750,019.92	91,428,004.80
<b>Sub Total</b>	<b>5,521</b>	<b>5,248</b>	<b>6,050</b>	<b>2,690,427,070</b>	<b>1,676,419,304.70</b>	<b>1,654,781,991.89</b>	<b>587,972,143.67</b>
<b>19 Additional Districts</b>							
Achham	485	466	548	292,496,156.00	201,174,345.00	199,409,696.00	35,516,211.00
Baitadi	583	443	536	258,887,714.83	145,158,765.69	140,434,749.24	66,390,968.58
Bajhang	313	298	389	194,162,763.24	94,092,798.55	94,092,798.55	55,154,411.13
Bajura	396	383	443	250,351,248.87	131,265,755.36	131,265,754.76	90,246,862.53
Dadeldhura	378	369	406	208,651,294.99	110,705,420.99	110,705,420.99	53,101,393.00
Dailekh	380	380	392	215,986,608.29	92,355,697.00	92,355,697.00	90,431,125.37
Dolpa	165	165	170	96,214,283.42	56,013,754.00	56,013,753.80	34,873,920.29
Doti	418	408	429	212,021,849.47	136,727,146.13	134,402,360.31	49,430,740.64
Humla	329	329	362	167,666,577.00	115,133,860.00	115,133,860.00	40,175,348.40
Jajarkot	359	294	322	231,999,496.76	115,300,621.15	108,692,826.70	18,776,299.02
Jumla	465	462	500	376,064,629.39	175,168,155.20	170,184,574.20	88,345,674.72
Kalikot	554	507	528	262,142,636.27	146,833,118.00	139,955,721.00	39,890,794.34
Mahottari	546	533	540	229,763,084.00	115,109,257.40	112,854,387.40	54,092,191.00
Rasuwa	258	257	271	123,313,145.31	90,443,460.80	90,443,460.40	817,887.96
Rautahat	1,002	944	981	532,522,389.77	203,546,826.21	198,433,164.14	195,327,460.67
Rolpa	98	98	98	47,733,820.00	31,194,774.00	31,194,774.00	11,702,146.00
Rukum	280	220	230	113,817,346.98	39,585,555.00	38,904,155.00	23,509,685.18
Sarlahi	912	912	912	398,940,129.00	226,618,683.40	226,396,307.20	143,348,227.60
Sindhuli	775	771	925	473,552,009.97	315,030,156.27	310,787,463.84	108,815,606.87
<b>19 District Total</b>	<b>8,696</b>	<b>8,239</b>	<b>8,982</b>	<b>4,686,287,183.56</b>	<b>2,541,458,150.15</b>	<b>2,501,660,924.53</b>	<b>1,199,946,954.30</b>
<b>15 Additional District</b>							
Bara	41						
Dhading	16	16	17	7,209,134.00			
Parsa	78	73	73	32,815,414.00			18,351,560.60
Salyan	15	7	10	7,717,850.00			4,609,100.00
Solukhumb	22						
<b>15 District Total</b>	<b>172</b>	<b>96</b>	<b>100</b>	<b>47,742,398</b>			<b>22,960,660.60</b>
<b>40 District Total</b>	<b>14,389</b>	<b>13,583</b>	<b>15,132</b>	<b>7,424,456,652</b>	<b>4,217,877,454.85</b>	<b>4,156,442,916.42</b>	<b>1,810,879,758.57</b>
<b>Innovative Programme Districts</b>							
Baglung	1	1	1	722,165.00	722,165.00	722,165.00	-

District	CO Registered w/ PAF (No.)	Agreement			Disbursement		
		With CO	No.	Amount (NRs.)	Main to NOA (Deducting Refund amount)	NOA to OA	Direct OA
					Amount (NRs.)	Amount (NRs.)	Amount (NRs.)
Chitawan	40	40	67	16,983,321.00	10,764,147.00	10,554,555.00	4,613,163.00
Dhading	81	81	103	46,770,758.00	33,117,492.20	33,117,492.20	15,432,722.80
Kanchanpur	121	120	120	38,314,742.00	32,638,942.00	32,295,442.00	3,237,600.00
Kavrepalan	1	1	1	1,735,037.00	1,735,037.00	1,735,037.00	-
Lalitpur	2	2	2	6,934,220.00	6,784,220.00	6,784,220.00	-
Makwanpur	111	98	105	41,947,303.52	20,216,814.02	20,191,749.02	16,435,839.00
Morang	79	78	78	48,165,609.87	32,087,754.87	32,087,754.47	-
Nawalparasi	1	1	1	1,551,248.00	1,551,248.00	1,551,248.00	-
Surkhet	1	1	1	3,015,982.00	2,020,708.00	2,020,708.00	-
<b>Innovative District Total</b>	<b>438</b>	<b>423</b>	<b>479</b>	<b>206,140,386.39</b>	<b>141,638,528.09</b>	<b>141,060,370.69</b>	<b>39,719,324.80</b>
<b>Total =</b>	<b>14,827</b>	<b>14,006</b>	<b>15,611</b>	<b>7,630,597,038</b>	<b>4,359,515,982.94</b>	<b>4,297,503,287.11</b>	<b>1,850,599,083.37</b>

Note: (1) Additionally, agreements are made with 37 NDM sub-projects through POs that amounts NRs 49,505,922 (NRs 16,549,491.00 NDM2005, NRs. 32,956,431 NDM2008). Out of this 46,125,292.95 is disbursed till date.  
(2) In the course of closing the NOA NRs. 15,905,697.53 has been refunded back to PAF account.

## Annex V (2): CO registration, agreement for sub-project and disbursement status (FY 66/67)

District	CO Registered w/ PAF (No.)	Agreement			Disbursement		
		With CO	No.	Amount (NRs.)	NOA Refund to PAF A/c	NOA to OA	Direct OA
					Amount (NRs.)	Amount (NRs.)	Amount (NRs.)
<b>Initial 6 Districts</b>							
Darchula	100	118	311	232,238,371	(288,154.00)	30,114,298.78	118,447,304.60
Kapilbastu	125	108	140	117,754,188	(123,174.01)	7,764,145.00	79,175,959.41
Mugu	61	47	55	26,072,130	(2,623,447.50)	1,689,785.00	25,035,212.00
Pyuthan	278	158	204	106,715,650	(128,976.20)	40,501,510.63	133,377,127.46
Ramechhap	203	192	252	123,259,281	(794,321.75)	18,935,072.28	140,508,535.40
Siraha	351	351	353	135,285,693	(1,665,246.00)	30,673,776.17	91,428,004.80
<b>6 District Total</b>	<b>1,118</b>	<b>974</b>	<b>1,315</b>	<b>741,325,312</b>	<b>(5,623,319.46)</b>	<b>129,678,587.86</b>	<b>587,972,143.67</b>
<b>19 Additional Districts</b>							
Achham	66	49	69	48,272,524	(1,110.00)	13,125,978.00	35,516,211.00
Baitadi	85	147	185	92,517,373	(1,040,010.52)	9,791,878.00	66,390,968.58
Bajhang	119	108	145	100,069,964	(0.80)	4,224,913.00	55,154,411.13
Bajura	153	141	172	112,599,621		3,902,176.20	90,246,862.53
Dadeldhura	80	134	152	91,492,982	(201,200.00)	-	53,101,393.00
Dailekh	128	128	140	81,254,189		-	90,431,125.37
Dolpa	46	46	51	39,165,919		177,440.00	34,873,920.29
Doti	102	93	100	57,818,234		16,105,557.00	49,430,740.64
Humla	52	52	66	44,710,615		700,000.00	40,175,348.40
Jajarkot	67	56	61	57,283,934		-	18,776,299.02
Jumla	163	161	181	164,903,456	(3,386,312.00)	31,145,135.20	88,345,674.72
Kalikot	186	140	154	87,472,434	(440,062.00)	31,358,377.40	39,890,794.34
Mahottari	80	71	76	48,987,910	(1,295,678.00)	4,699,819.00	54,092,191.00
Rasuwa	0	43	47	32,105,256		11,253,411.20	817,887.96
Rautahat	365	326	344	186,435,708		37,227,062.04	195,327,460.67
Rolpa	26	26	26	12,092,250		5,195,732.00	11,702,146.00
Rukum	75	101	110	67,321,255	(1,668,596.00)	2,846,134.00	23,509,685.18
Sarlahi	353	353	353	172,506,071	(37,750.00)	41,813,139.20	143,348,227.60
Sindhuli	151	150	216	118,081,365	(18,675.25)	28,377,556.00	108,815,606.87
<b>19 District Total</b>	<b>2,297</b>	<b>2,325</b>	<b>2,648</b>	<b>1,615,091,061</b>	<b>(8,089,394.57)</b>	<b>241,944,308.24</b>	<b>1,199,946,954.30</b>
<b>15 Additional Districts</b>							
Bara	41	0	0	0			
Dhading	16	16	17	7,209,134			
Parsa	78	73	73	32,815,414			18,351,560.60
Salyan	15	7	10	7,717,850			4,609,100.00
Solukhumbu	22	0	0	0			

District	CO Registered w/ PAF (No.)	Agreement			Disbursement		
					NOA Refund to PAF A/c	NOA to OA	Direct OA
		With CO	No.	Amount (NRs.)	Amount (NRs.)	Amount (NRs.)	Amount (NRs.)
<b>15 District Total</b>	172	96	100	47,742,398	-	-	22,960,660.60
<b>40 District Total</b>	3,587	3,395	4,063	2,404,158,771	(13,712,714.03)	371,622,896.10	1,810,879,758.57
<b>Innovative Programme Districts</b>							
Baglung	0	0	0	0		361,165.00	-
Chitawan	14	14	26	6,219,174		1,139,318.00	4,613,163.00
Dhading	0	0	12	8,524,594		7,613,740.20	15,432,722.80
Kanchanpur	15	15	15	5,600,100	(75,700.00)	3,080,420.00	3,237,600.00
Kavrepalan	0	0	0	0		-	-
Lalitpur	0	0	0	150,000		-	-
Makwanpur	21	17	21	11,477,007	(1,122,009.50)	1,583,126.00	16,435,839.00
Morang	18	17	17	16,077,855		-	-
Nawalparasi	0	0	0	0		-	-
Surkhet	0	0	0	0	(995,274.00)	-	-
<b>Innovative District Total</b>	<b>68</b>	<b>63</b>	<b>91</b>	<b>48,048,730</b>	<b>(2,192,983.50)</b>	<b>13,777,769.20</b>	<b>39,719,324.80</b>
<b>Total =</b>	<b>3,655</b>	<b>3,458</b>	<b>4,154</b>	<b>2,452,207,501</b>	<b>(15,905,697.53)</b>	<b>385,400,665.30</b>	<b>1,850,599,083.37</b>

## Annex VI (1): Completed Sub Projects

### Income Genetation

<b>Registered As</b>	19 District
Achham	247
Baitadi	258
Bajhang	112
Bajura	208
Dadeldhura	233
Dailekh	252
Dolpa	162
Doti	285
Humla	250
Jajarkot	70
Jumla	176
Kalikot	266
Mahottari	295
Rasuwa	191
Rautahat	329
Rolpa	72
Rukum	90
Sarlahi	557
Sindhuli	586
	<b>4,639</b>
<b>Registered As</b>	6 District
Darchula	600
Kapilbastu	633
Mugu	158
Pyuthan	608
Ramechhap	799
Siraha	737
	<b>3,535</b>
<b>Registered As</b>	Innovative
Chitawan	23
Dhading	81
Kanchanpur	101
Kavrepalanchok	1
Makwanpur	26
Morang	61
	<b>293</b>
<b>Income Genetation Total</b>	<b>8,467</b>

### Infrastructure

<b>Registered As</b>	19 District
Achham	45
Baitadi	51
Bajhang	62
Bajura	27
Dadeldhura	10
Doti	3
Humla	22
Jajarkot	2
Jumla	74
Rasuwa	8
Rautahat	40
Sindhuli	45
	<b>389</b>
<b>Registered As</b>	6 District
Darchula	194
Kapilbastu	367
Mugu	90
Pyuthan	142
Ramechhap	109
Siraha	236
	<b>1,138</b>
<b>Registered As</b>	Innovative
Baglung	1
Chitawan	21
Dhading	2
Kavrepalanchok	1
Makwanpur	30
Morang	45
Nawalparasi	1
	<b>101</b>
<b>Infrastructure Total</b>	<b>1,628</b>
<b>Total Investment</b>	<b><u>10,095</u></b>

## No of Completed Infrastructures by Types

<b>Activity</b>	<b>No</b>
Boring Pump	65
Bridge	20
Building	186
Building Maintenance	2
Canal	3
Chilling Vat Set	3
Culvert	61
Dhikki Pump	621
Drainage	4
Drinking Water + Irrigation	18
Dumping Site	107
Electricity Line Extension	30
Fencing	3
Ghatta	179
Hume Pipe	5
Improved Stove	1921
Infra Technical Assistance-IG	25
Infra Technical Assistance-Social	4
Infrastructure Design-IG	14
Infrastructure Design-Social	15
Irrigation	2259
Irrigation Rehabilitation	8
Micro Hydro Power	66
Milk Chilling Centre	3
Plastic Pond	30
Pond	12
Pond Maintenance	4
Pump Set/Motor	110
Rice Mill	20
River Training	3
Road	98
Road Maintenance	8
School Boundary Wall	4
School Maintenance	10
Solar System	590
Toilet	2712
Water Pump	68
Water Supply	1649
Water Supply Maintenance	6
<b><u>Total of Community Infrastructure</u></b>	<b><u>10946</u></b>

## Annex VI (2): Sub-Project Physical Achievement

SN	Activities	No. of Beneficiary HH
<b>A</b>	<b>Income Generating Activities</b>	<b>34,649</b>
	Agriculture & Others	42140
	Livestock	305745
	Manufacturing & Others	11196
	Service Sector	17206
	Social Service	4703
	Trading	54481
<b>B</b>	<b>Community Infrastructure</b>	<b>132,789</b>
	Bio Diesel Expller Machine	20
	Boring Pump	433
	Bridge	9555
	Building	36991
	Building Maintenance	55
	Canal	99
	Chilling Vat Set	390
	Culvert	5809
	Dhikki Pump	618
	Drainage	105
	Drinking Water + Irrigation	555
	Dumping Site	107
	Electricity Line Extension	3635
	Fencing	24
	Ghatta	1244
	Hume Pipe	270
	Improved Stove	2145
	Irrigation	17512
	Irrigation Rehabilitation	859
	IWM Pico Micro Hydro	32
	Lab Test Equipment & Inst.	2
	Micro Hydro Power	15208
	Milk Chilling Centre	729
	Plastic Pond	393
	Pond	312
	Pond Maintenance	220
	Pump Set/Motor	480
	Rice Mill	36
	River Training	165
	Road	25400
	Road Maintenance	198
	School Boundary Wall	531
	School Maintenance	651
	Solar System	3805
	Toilet	4201
	Water Pump	78
	Water Supply	32084
	Water Supply Maintenance	342
<b>C</b>	<b>Capacity Building</b>	<b>415,471</b>

## Annex-VII (1): PAF Innovative Sub-projects

SNo.	District	Name Of PO	Sub Project Theme	No. Of Cos.	No. Of Sub Project			Total Ben. HH	PAF Investment (Agreement Amount Rs.)		PAF Disbursement Amount (Rs.)			Project Status		
					Total	IG	Infra		PO	CO	PO	CO		C	M	N
												NOA	OA			
1	Baglung	Marshyangdi Khola Micro Hydro Project Users Committee	Micro-Hydro Power Project in collaboration with AEPC	1	1	1	142		722,165.00		722,165.00	722,165.00	1	0		
2	Chitwan	Multi - dimensional Agriculture For Dev. MADE Nepal	Vegetable Farming on Lease Land for Landless	40	67	45	28	1,744	3,206,280.00	16,983,321.00	2,019,958.00	10,276,257.00	9,415,237.00	50	17	
3	Dhading	Forum For Community Upliftment System (FOCUS Nepal)	Uplift Chepang community people in Dhading district	81	103	81	22	3,774	7,731,810.00	46,770,758.00	4,972,198.54	33,170,339.20	33,170,339.20	91	12	
4	Kanchanpur	Nepal National Social Welfare Association (NNSWA)	Creating and enbaling environment to the Dalit Community-- "Mukta Kamayia"	121	120	120		2,799	7,601,820.00	38,314,742.00	4,121,092.00	32,714,642.00	29,215,022.00	101	18	1
5	Kavrepalanchok	Santi Jana Adarsha Sewa Club (SJASC)*	Lift Water Supply and enhanced livelihoods of Dalits, Ethnic and indigeneous people.	1	1	1	1	125	444,900.00	1,735,037.00	444,900.00	1,735,037.00	1,735,037.00	1	0	
6	Lalitpur	Nepal Water Conservation Foundation	Gaun besi ropeway programme for poverty alleviation						1,382,500.00		1,382,500.00				0	
7	Lalitpur	Shree Sangrakshan Rajjumarga	Gaun besi ropeway programme for poverty alleviation	2	2		2	516	3,211,475.00	6,934,220.00	3,034,440.00	6,784,220.00	6,784,220.00	2	0	
8	Makwanpur	Manohari Development Institute Nepal (MDI-Nepal)	Area Development in 11 VDCs: Integrating livelihood improvement of trival communities (Chepang and	92	86	47	39	3,359	5,011,220.00	35,149,988.52	2,062,700.00	14,881,808.52	13,273,617.52	64	18	4



SNo.	District	Name Of PO	Sub Project Theme	No. Of Cos.	No. Of Sub Project			Total Ben. HH	PAF Investment (Agreement Amount Rs.)		PAF Disbursement Amount (Rs.)			Project Status		
					Total	IG	Infra		PO	CO	PO	CO		C	M	N
												NOA	OA			
			Tamang) through agro forestry, plastic water harvesting construction and link road construction													
9	Makwanpur	Women, Childrend And Environment Dev. Center	Bankariya and Praja/Chepang improvement by livestock, agriculture, education and other income generating program support by locally available resources	19	19	19	567	2,300,000.00	6,797,315.00	1,305,190.00	6,457,015.00	5,335,005.50	1	18		
10	Morang	Madan Memorial Academy Nepal	Targeted Vocational Education through Revolving Fund					7,839,085.00		6,967,868.00				0		
11	Morang	Multi Puropose Development Management Services,Nep	IG activities for poverty reduction-- Livestock development, vegetable farming, etc.	28	28	28	861	3,102,921.42	10,759,341.00	1,840,180.00	10,759,341.00	10,759,341.00	28	0		
12	Morang	Women Professional Agriculture Group	IG Programmes for poverty reduction-- Making women starting business on agriculture trough Organic Fariming	51	50	50	2272	3,338,974.30	37,406,268.87	2,101,227.00	21,328,413.87	21,328,413.87	33		17	
13	Nawalparasi	Jaladevi Community Organisation	Wire Bridge	1	1		705		1,551,248.00		1,551,248.00	1,551,248.00	1	0		
14	Surkhet	Bheri jal Sinchai Upabhokta Samiti	Irrigation Users' Group	1	1		655		3,015,982.00		3,015,982.00	3,015,982.00		1		
		TOTAL		438	479	391	17519	45,170,985.72	206,140,386.39	30,252,253.54	143,396,468.59	136,305,628.09	373	84	22	

Note: C: Completed, M: Middle Stage; N: Not started

## Annex-VII (2): NDM 2005 Innovative Sub-projects

S.No.	Name of PO	District	Sub-Project	Agreement Date	Total Project Cost (NRs.)	Project Status
1	District Agriculture Development Office, Morang	---	More Rice for Food Deficit people by using less inputs	06-Jul-05	1,250,000.00	C
2	District Coffee Producers Association	Syangja	Orange and Coffee Production and Marketing Management	06-Jul-05	1,397,440.00	C
3	Environment And Public Health Organization	Parsa	Sustainable Safe Water Provision in Rural Parsa District	06-Jul-05	1,400,000.00	M
4	FECOFUN, Shesh Narayan Range Post Working Committee	Kathmandu	Briquette Production	06-Jul-05	900,000.00	M
5	Fewa Matsya Byawasayi Samitee	---	Fisheries for Livelihood of Women and Deprived Communities	06-Jul-05	1,050,000.00	M
6	GIFT – NDM	Bajura	Use of Local Resources for Sustainable Self-Independence	06-Jul-05	1,400,000.00	C
7	Global Multiple Cooperative Organization	Saptari	Pigeon Keeping Project for Income Generating	06-Jul-05	1,396,997.00	C
8	Himanchal Higher Secondary School	Myagdi	Benefiting Rural Areas through Wi-Fi Technology	06-Jul-05	1,387,000.00	C
9	Multidis. Inst. For Livelihood Enhan. & ..(MILAN)	Myagdi	Healthy Women for Sustainable Development	06-Jul-05	1,133,750.00	C
10	Nucleus For Empowerment Through Skill Transfer	Syangja	Agro-Based Income Generation Project	06-Jul-05	1,343,229.00	C
11	Salt Trading Corporation Limited	Kathmandu	Pot-in-pot Evaporative Cooling Technology for Income Generation and Food Preservation	06-Jul-05	1,400,000.00	M
12	Suspa Educational Development Committee	Dolakha	Cardamom Cultivation in Community Forest	06-Jul-05	700,000.00	C
				Total	14,758,416.00	

Note: C: Completed, M: Middle Stage; N: Not started

## Annex-VII (3): NDM 2008 Innovative Sub-projects

S.No.	Name Of PO	District	Sub-Project	Agreement Date	Total Project Cost (NRs.)	Project Status
1	Center For Agriculture Technology & Training (CATT)	Kavrepalanchok	Mushroom & Organic Vegetable Production for Poverty Reductions & Peace	1-Jul-08	1,500,000.00	C
2	Center For Renewable Energy (CRE)	Morang	"Light for All" Intermediate Technology for Long-Term Solution	2-Jul-08	1,500,000.00	C
3	Converge Design Consultancy	Lalitpur	Low-cost Organic farming: A New Way of Life	29-Jun-08	1,500,000.00	C
4	Dapcha Sericulture Development Program	Kavrepalanchok	Resham Koya Ko Mala (Silk Garland Production) Utpadan	30-Jun-08	1,467,000.00	C
5	Environment Camps For Conservation Awareness (ECCA)	---	Using Common Salt to Treat Water for Drinking	1-Jul-08	1,500,000.00	C
6	FOCUS Nepal	Dhading	Economic Promotion & Community Pond-Protection Project	30-Jun-08	1,496,700.00	M
7	Gramin Urja Tatha Prabidhi Sewa Kendra P.Ltd(RETSC)	---	Ghatte Bijuli-Gaun Jhilimili	2-Jul-08	1,500,000.00	M
8	GRID Nepal	Chitawan	Technology for Access, Access For Livelihood	1-Jul-08	1,500,000.00	M
9	Hill Development And Conservation Group, Nepal	Solukhumbu	Community-Based Tourism in Salpa-Arun Trek	30-Jun-08	1,500,000.00	M
10	Himali Community Support Group_NDM	Mugu	Himalayan Community Innovation Project	18-Nov-08	1,475,000.00	M
11	Hoste Hainse	---	Pesticides/Insecticides Used Farming will be alone if our Organic goes from School to Home	1-Jul-08	1,500,000.00	C
12	Inteegrated Community Development Movement,(ICDM)	Dolakha	Promotion of Yak Through Tourism for Livelihood of People	2-Jul-08	1,450,000.00	M
13	Janaki Women Awareness Society (JWAS)	Dhanusa	Riverbank Farming for Livelihood's Promotion in Terai	1-Jul-08	1,099,231.00	C
14	Karnali Rin Tatha Rin Sahakhari Sanstan	Jhapa	Appropriate Utilization of Local Resources	30-Jun-08	1,500,000.00	C
15	Kathmandu University	Morang	Electric Rickshaw Redefining Transportation in Terai	1-Jul-08	600,000.00	C
16	Kaushila Foundation For Peace & Innovative Initiat	Lalitpur	BLUE REVOLUTION	29-Jun-08	1,141,800.00	M
17	Khotang Development Forum(KDF)	Khotang	Rural Bee Resource Centre for Employment of Women	30-Jun-08	1,495,000.00	C
18	NESDO Nepal	Parbat	Customary Business Promotion for Livelihood Improvement	1-Jul-08	1,500,000.00	M
19	Research And Development Nepal	Sankhuwasabha	Allo Enterprise Resource Centre Under Women Cooperative	30-Jun-08	1,500,000.00	C

S.No.	Name Of PO	District	Sub-Project	Agreement Date	Total Project Cost (NRs.)	Project Status
20	Rural Service Society-NDM	Sarlahi	Cows Urine, Source of Employment, Income and Organic Production	1-Jul-08	1,000,000.00	C
21	Sana Kishan Sahakari Sanstha Ltd..	Morang	Waste Banana Stump Based Micro Enterprise	30-Jun-08	1,320,000.00	M
22	SUPPORT Foundation	Kanchanpur	Income Generating Agriculture for Livelihood Support	30-Jun-08	1,497,000.00	C
23	Sustainable & Equitable Development Academy (NDM)	Kalikot	Soap Making for Income, Conservation and Hygiene	30-Jun-08	984,000.00	M
24	Tanak Nath Sewa Samanj	Panchthar	Pesticides/Insecticides Used Farming will be alone if our Organic goes from School to Home	1-Jul-08	1,407,700.00	C
25	Women For Human Rights (WHR) Single Women Group	Kathmandu	Rehabilitation of Displaced Single Women (Widows)	1-Jul-08	1,498,000.00	C
				Total	34,431,431.00	

Note: C: Completed, M: Middle Stage; N: Not started

## Annex-VIII (1): POs, COs and Coverage (cumulative to date)

District	No. of Working Pos	Total VDC + Municipality in District	PO Committed No. of VDC	CO Working VDC	Sub Proj. No.		Beneficiary HH	
					IG	Infra	CO Member HH	Total Beneficiary HH
<b>Initial 6 Districts</b>								
Darchula	10	41	41	41	851	380	17,833	39,174
Kapilbastu	15	78	71	60	804	420	22,701	34,633
Mugu	6	24	24	24	226	103	6,662	12,692
Pyuthan	12	49	50	49	892	246	30,679	36,390
Ramechhap	11	55	55	54	1,077	185	26,513	36,249
Siraha	17	108	87	71	1,267	258	30,609	35,343
<b>6 Dist. Tot</b>	<b>71</b>	<b>355</b>	<b>328</b>	<b>299</b>	<b>5,117</b>	<b>1,592</b>	<b>134,997</b>	<b>194,481</b>
<b>19 Additional Districts</b>								
Achham	16	75	67	34	486	62	15,121	27,373
Baitadi	14	63	63	36	437	99	14,866	18,771
Bajhang	10	47	47	19	234	155	7,387	18,258
Bajura	4	27	27	27	383	60	11,662	15,485
Dadeldhura	8	21	21	21	369	37	10,899	12,684
Dailekh	5	56	25	25	380	12	13,817	15,617
Dolpa	3	23	23	18	166	4	4,942	5,254
Doti	5	51	36	31	408	21	13,140	16,422
Humla	5	27	27	27	331	31	7,860	9,819
Jajarkot	8	30	26	26	300	22	10,709	21,391
Jumla	7	30	30	30	470	93	16,621	19,091
Kalikot	6	30	30	30	507	21	14,839	17,021
Mahottari	12	77	46	23	540		13,440	13,351
Rasuwa	7	18	18	15	259	13	7,572	8,426
Rautahat	9	97	73	48	943	202	27,003	36,884
Rolpa	5	51	21	4	98		2,928	2,919
Rukum	10	43	33	16	210	20	6,741	7,678
Sarlahi	16	100	67	66	912		26,462	26,335
Sindhuli	10	54	53	37	774	151	24,071	35,451
<b>19 Dist. Tot</b>	<b>160</b>	<b>920</b>	<b>733</b>	<b>533</b>	<b>8,207</b>	<b>1,003</b>	<b>250,080</b>	<b>328,230</b>
<b>25 Dist. Tot</b>	<b>231</b>	<b>1,275</b>	<b>1,061</b>	<b>832</b>	<b>13,324</b>	<b>2,595</b>	<b>385,077</b>	<b>522,711</b>
<b>15 Districts (B1)</b>								
Bara	13	99	45					
Bardiya	6	32	18					
Dhading	7	50	14	5	16	1	447	491
Dhanusha	14	102	51					
Khotang	7	76	38					
Okhaldhunga	7	56	27					
Panchthar	7	41	21					
Parsa	11	83	46	39	73		2,179	2,127
Salyan	6	47	27	7	6	4	194	415
Saptari	15	115	45					
Sindhupalchok	11	79	32					
Solukhumbu	3	34	14					
Taplejung	9	50	40					
Terhathum	4	32	16					
Udayapur	10	45	23					
<b>15 Dist. Tot</b>	<b>130</b>	<b>941</b>	<b>457</b>	<b>51</b>	<b>95</b>	<b>5</b>	<b>2,820</b>	<b>3,033</b>
<b>40 District Total</b>	<b>361</b>	<b>2,216</b>	<b>1,518</b>	<b>883</b>	<b>13,419</b>	<b>2,600</b>	<b>387,897</b>	<b>525,744</b>
<b>Innovative Programme Districts</b>								
Baglung	0	60	0	1		1	13	142
Chitawan	1	38	7	7	45	28	1,034	1,744
Dhading	1	50	6	6	81	22	2,394	3,774
Kanchanpur	1	20	20	8	120		2,755	2,799
Kavrepalanchok	1	90	1	1	1	1	11	125
Lalitpur	2	42	4	2		2	416	516

District	No. of Working Pos	Total VDC + Municipality in District	PO Committed No. of VDC	CO Working VDC	Sub Proj. No.		Beneficiary HH	
					IG	Infra	CO Member HH	Total Beneficiary HH
Makwanpur	2	44	18	18	66	39	3,154	3,926
Morang	3	65	4	3	78	45	3,124	3,133
Nawalparasi	0	74	0	1		1	11	705
Surkhet	0	48	0	1		1	9	655
<b>Innovative Total</b>	<b>11</b>	<b>531</b>	<b>60</b>	<b>48</b>	<b>391</b>	<b>140</b>	<b>12,921</b>	<b>17,519</b>
<b>Sub Total</b>	<b>372</b>	<b>2,747</b>	<b>1,578</b>	<b>931</b>	<b>13,810</b>	<b>2,740</b>	<b>400,818</b>	<b>543,263</b>
<b>Innovative Programme Districts</b>								
NDM-2005	12		25	25	10	2		8,999
NDM-2008	25		52	52	17	8		5,228
<b>NDM Total</b>	<b>37</b>	<b>0</b>	<b>77</b>	<b>77</b>	<b>27</b>	<b>10</b>	<b>0</b>	<b>14,227</b>
<b>Total =</b>	<b>409</b>	<b>2,747</b>	<b>1,655</b>	<b>1,008</b>	<b>13,837</b>	<b>2,750</b>	<b>400,818</b>	<b>557,490</b>

*Note: 14 POs worked in 25 districts were dropped due to poor performance and inability to work.*

## Annex-VIII (2): POs, COs and Coverage (Only FY 2009/10 to date)

District	No. of Agreement with POs	Total VDC + Municipality in District	PO Committed No. of VDC	CO Working VDC		Sub Proj. No.		Beneficiary HH	
				Total	New VDC	IG	Infra	CO Member HH	Total Beneficiary HH
<b>Initial 6 Districts</b>									
Darchula	10	41	41	41	0	154	157	1,917	13,352
Kapilbastu	15	78	71	60	3	104	36	3,075	5261
Mugu	6	24	24	24	2	55	1	1,089	1523
Pyuthan	12	49	50	49	3	142	62	4,194	6,457
Ramechhap	11	55	55	54	5	184	69	2,695	9,300
Siraha	17	108	87	71	13	351	2	8,012	9,228
<b>6 Dist. Tot</b>	<b>71</b>	<b>355</b>	<b>328</b>	<b>299</b>	<b>26</b>	<b>990</b>	<b>327</b>	<b>20,982</b>	<b>45,121</b>
<b>19 Additional Districts</b>									
Achham	16	75	67	34	2	64	5	540	8,197
Baitadi	14	63	63	36	5	157	28	1,700	5804
Bajhang	10	47	47	19	0	77	68	2,761	9330
Bajura	4	27	27	27	7	141	31	3,489	5,653
Dadeldhura	8	21	21	21	3	134	18	2,457	4848
Dailekh	5	56	25	25	0	128	12	3,965	5,800
Dolpa	3	23	23	18	6	47	4	1,271	1542
Doti	5	51	36	31	5	93	7	2,954	3786
Humla	5	27	27	27	3	54	12		2357
Jajarkot	8	30	26	26	0	50	11	1,639	2,723
Jumla	7	30	30	30	10	170	11	4,622	6628
Kalikot	6	30	30	30	8	140	14	1,158	5368
Mahottari	12	77	46	23	1	76	0	1,854	1726
Rasuwa	7	18	18	15	0	43	4	2,877	1542
Rautahat	9	97	73	48	11	325	33		15,059
Rolpa	5	51	21	4	0	26	0	755	755
Rukum	10	43	33	16	4	90	20	1,923	4093
Sarlahi	16	100	67	66	28	353	0	9,098	9,894
Sindhuli	10	54	53	37	5	152	64	3,934	8,272
<b>19 Dist. Tot</b>	<b>160</b>	<b>920</b>	<b>733</b>	<b>533</b>	<b>98</b>	<b>2,320</b>	<b>342</b>	<b>46,997</b>	<b>103,377</b>
<b>25 Dist. Tot</b>	<b>231</b>	<b>1,275</b>	<b>1,061</b>	<b>832</b>	<b>124</b>	<b>3,310</b>	<b>669</b>	<b>67,979</b>	<b>148,498</b>
<b>15 Districts (B1)</b>									
Bara	13	99	45						
Bardiya	6	32	18						
Dhading	7	50	14	5	5	16	1	447	491
Dhanusha	14	102	51						
Khotang	7	76	38						
Okhaldhunga	7	56	27						
Panchthar	7	41	21						
Parsa	11	83	46	39	39	73	0	2,179	2127
Salyan	6	47	27	7	7	6	4	194	415
Saptari	15	115	45						
Sindhupalchok	11	79	32						
Solukhumbu	3	34	14						
Taplejung	9	50	40						
Terhathum	4	32	16						
Udayapur	10	45	23		0	0	0	0	0
<b>15 Dist Tot</b>	<b>130</b>	<b>941</b>	<b>457</b>	<b>51</b>	<b>51</b>	<b>95</b>	<b>5</b>	<b>2820</b>	<b>3033</b>
<b>40 Dist Tot</b>	<b>361</b>	<b>2,216</b>	<b>1,518</b>	<b>883</b>	<b>175</b>	<b>3,405</b>	<b>674</b>	<b>70,799</b>	<b>151,531</b>
<b>Innovative Programme Districts</b>									
Baglung	0	60	0	1	0	0	0	0	0
Chitawan	1	38	7	7	2	16	16	382	706
Dhading	1	50	6	6	0	0	12		783
Kanchanpur	1	20	20	8	0	15	1	339	338

District	No. of Agreement with POs	Total VDC + Municipality in District	PO Committed No. of VDC	CO Working VDC		Sub Proj. No.		Beneficiary HH	
				Total	New VDC	IG	Infra	CO Member HH	Total Beneficiary HH
Kavrepalanchok	1	90	1	1	0	0	0		0
Lalitpur	2	42	4	2	0	0	0		0
Makwanpur	2	44	18	18	0	12	9	418	946
Morang	3	65	4	3	0	17	0	823	823
Nawalparasi	0	74	0	1	0	0	0	0	0
Surkhet	0	48	0	1	0	0	0	0	0
<b>Innovative Total</b>	<b>11</b>	<b>531</b>	<b>60</b>	<b>48</b>	<b>2</b>	<b>60</b>	<b>38</b>	<b>1,962</b>	<b>3,596</b>
<b>Total =</b>	<b>372</b>	<b>2,747</b>	<b>1,578</b>	<b>931</b>	<b>177</b>	<b>3,465</b>	<b>712</b>	<b>72,761</b>	<b>155,127</b>



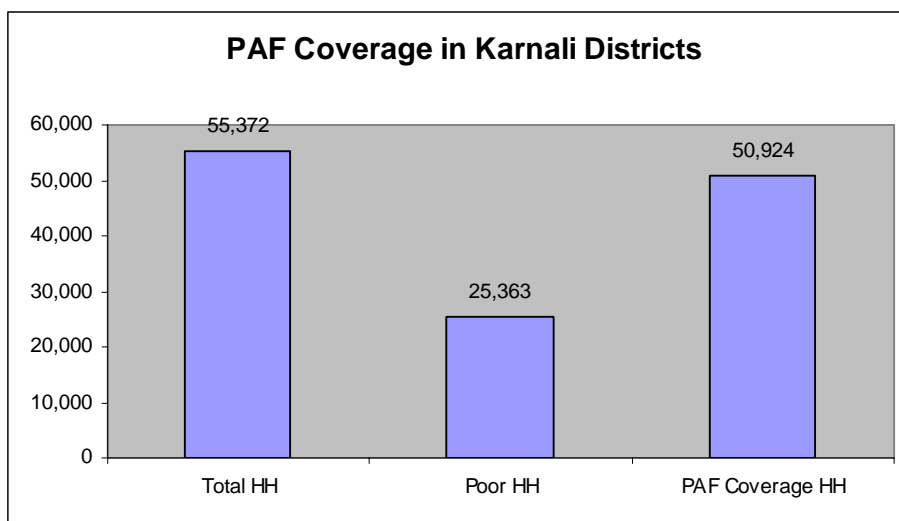
## Annex- IX: Social Inclusion Strategy Reaching the Poor

<u>Targeting Sequence</u>	<u>Key Actor</u>	<u>Tools/Methods</u>
<b>Districts</b> ↓	PAF Management	District Level Indicators (CBS/NPC)
<b>VDCs</b> ↓	PAF Management Portfolio Manager	VDC Prioritization DDC-Level Stakeholders' Consultation
<b>Wards</b> ↓	Partner Organization (PO)	VDC-Level Interaction
<b>Settlements</b> ↓	Partner Organization (PO) Community	Ward-Level Interaction Settlement-Level Sensitization Settlement Social Mapping Social Assessment/ Wellbeing Ranking
<b>Community</b> ↓	Community Community Org. (CO)	Identification of Target Households Formation of COs Registration of COs
<b>Target Beneficiaries</b>	Community Org. (CO)	Project Development Link with District DDC plan Community Action Planning

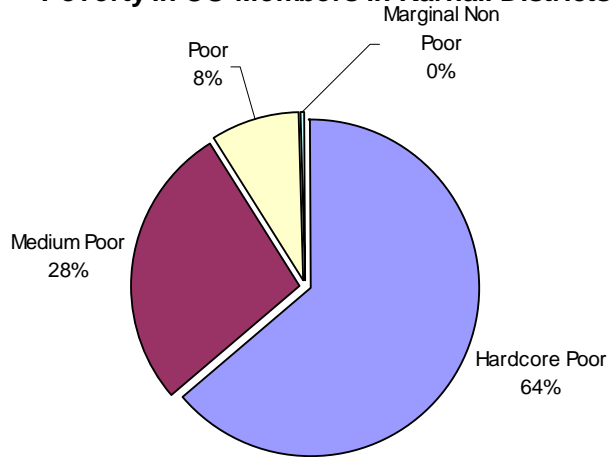
## Annex X: PAF program in Karnali Districts

District	No. Of PO	Karnali VDC		CO Registration Nos	CO Agreement Nos	Karnali Households (HH)			Agreement Amount (Rs.)
		Total VDC	PAF Coverage VDC			Total HH	Poor HH	CO Member Beneficiary HH	
Dolpa	3	23	18	165	165	5,816	2,309	4,942	96,214,283.42
Humla	5	27	27	329	329	6,951	2,885	7,860	167,666,577.00
Jumla	7	30	30	465	462	15,856	5,454	16,621	376,064,629.39
Kalikot	6	30	30	554	507	18,490	10,503	14,839	262,142,636.27
Mugu	6	24	24	247	220	8,259	4,212	6,662	122,363,380.00
<b>Total</b>	<b>27</b>	<b>134</b>	<b>129</b>	<b>1760</b>	<b>1683</b>	<b>55,372</b>	<b>25,363</b>	<b>50,924</b>	<b>1,024,451,506.08</b>
		100%	96%			100%		92%	

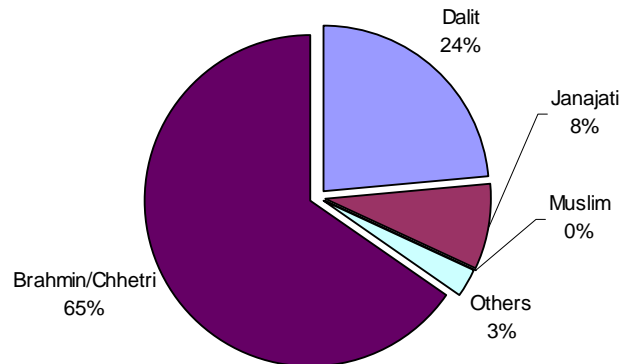
District	Total PAF Agreement Amount (Rs.)	IG No.	IG Agreement Amount (Rs.)	Infra No.	Infrastructure Agreement Amount (Rs.)
Dolpa	96,214,283.42	166	86,234,444.00	4	9,979,839.42
Humla	167,666,577.00	331	141,579,394.00	31	26,087,183.00
Jumla	376,064,629.39	470	338,714,553.00	93	37,350,076.39
Kalikot	262,142,636.27	507	239,489,237.20	21	22,653,399.07
Mugu	122,363,380.00	226	65,302,454.00	103	57,060,926.00
<b>Total</b>	<b>1,024,451,506.08</b>	<b>1,700</b>	<b>871,320,082.20</b>	<b>252</b>	<b>153,131,423.88</b>
	100%		85%		15%



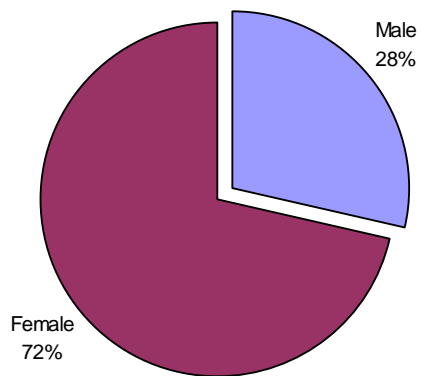
### Poverty in CO Members in Karnali Districts



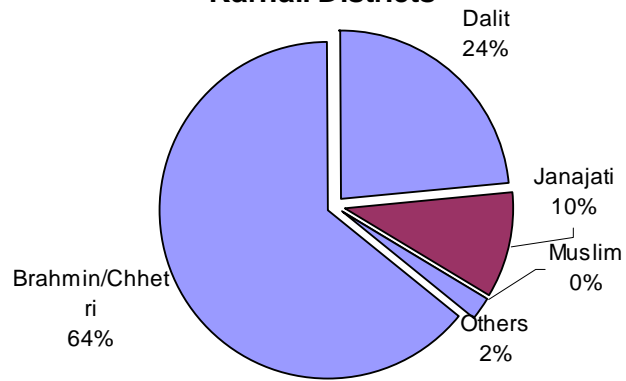
### Ethnicity Wise CO Members In Karnali Districts



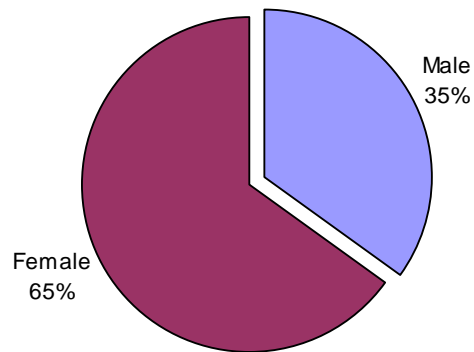
### Gender Wise CO Members In Karnali Districts



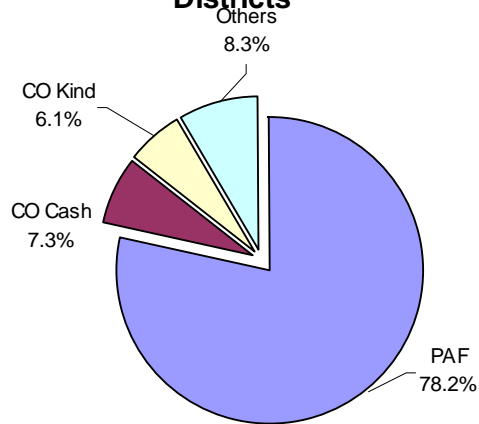
### Ethnicity Wise CO Key Position Holders In Karnali Districts



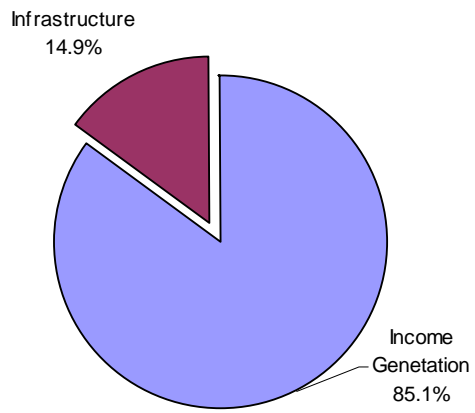
### Gender Wise CO Key Position Holders In Karnali Districts



### Contribution in Sub Projects In Karnali Districts



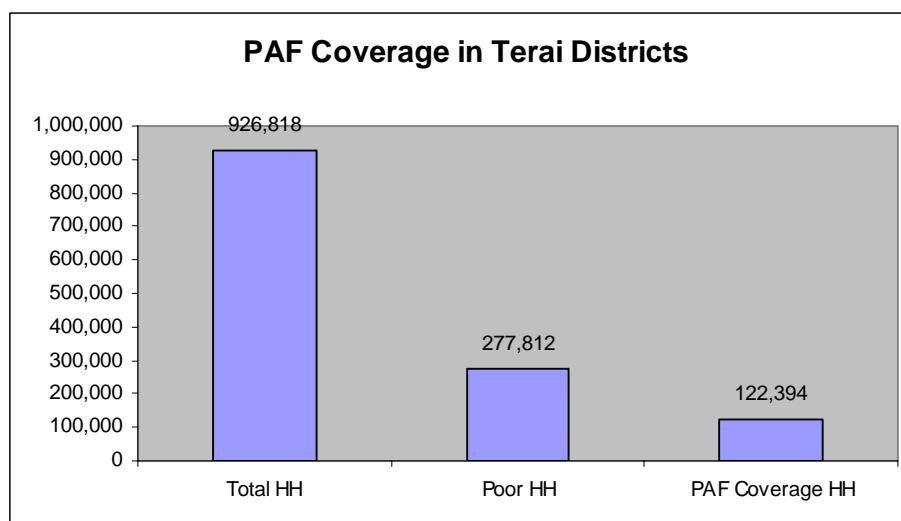
**PAF Investment In Karnali Districts  
Income Generation Vs. Infrastructure**



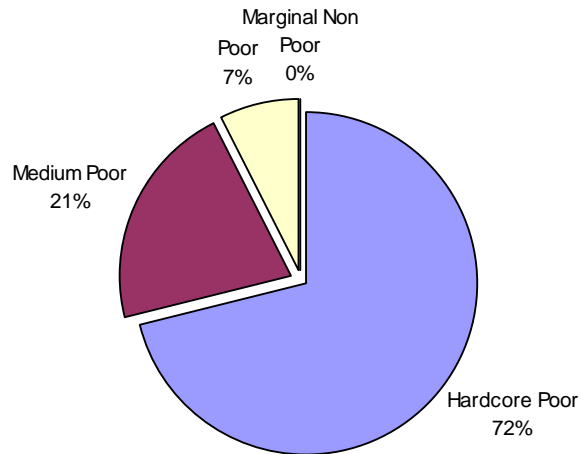
## Annex XI (1) : PAF Program in Terai Districts

District	No. of PO	Terai VDC		CO Redg. No.	CO Agreement No.	Terai Households (HH)			Total Agreement PAF Amount (Rs.)
		Total VDC	PAF Coverage VDC			Total HH	Poor HH	CO Member Beneficiary HH	
Mahottari	12	77	23	828	810	113,651	33,072	22,701	229,763,084.00
Rautahat	9	97	48	1,294	1,284	88,209	26,639	30,609	532,522,389.77
Sarlahi	16	100	66	546	533	111,137	29,340	13,440	398,940,129.00
Kapilbastu	15	78	60	1,002	944	72,916	29,239	27,003	473,099,922.79
Siraha	17	108	71	912	912	100,070	29,020	26,462	502,217,832.68
Bara	13	99		41		87,639	26,204		0.00
Bardiya	6	32				59,603	26,762		0.00
Dhanusha	14	102				117,371	31,573		0.00
Parsa	11	83	39	78	73	75,109	17,651	2,179	32,815,414.00
Saptari	15	115				101,114	28,312		0.00
<b>Total</b>	<b>128</b>	<b>891</b>	<b>307</b>	<b>4,701</b>	<b>4,556</b>	<b>926,818</b>	<b>277,812</b>	<b>122,394</b>	<b>2,169,358,772</b>
		100%	34%			100%		13%	

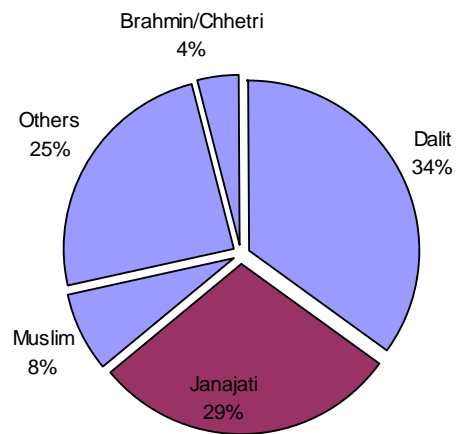
District	Total PAF Agreement Amount (Rs.)	IG No.	IG Agreement Amount (Rs.)	Infra No.	Infrastructure Agreement Amount (Rs.)
Mahottari	229,763,084.00	540	229,763,084.00		0.00
Rautahat	532,522,389.77	943	499,893,741.75	202	32,628,648.02
Sarlahi	398,940,129.00	912	398,940,129.00		
Kapilbastu	473,099,922.79	804	305,361,623.46	420	167,738,299.33
Siraha	502,217,832.68	1,267	455,084,260.58	258	47,133,572.10
Bara	0.00				
Bardiya	0.00				
Dhanusha	0.00				
Parsa	32,815,414.00	73	32,815,414.00		
Saptari	0.00				
<b>Total</b>	<b>2,169,358,772.24</b>	<b>4,539.00</b>	<b>1,921,858,252.79</b>	<b>880.00</b>	<b>247,500,519.45</b>
	100%		89%		11%



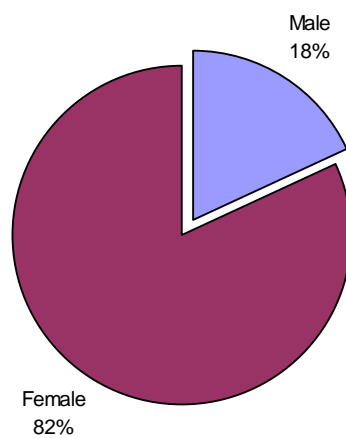
### Poverty in CO Members In Terai Districts



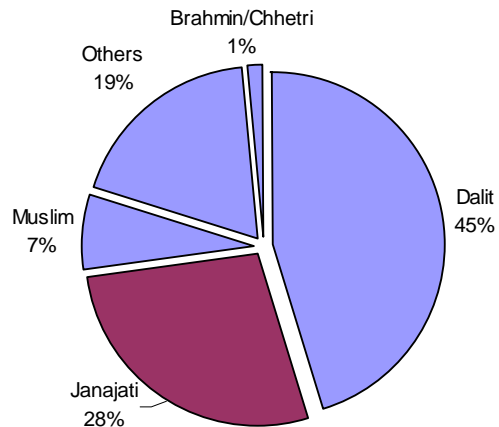
### Ethnicity Wise CO Members In Terai Districts



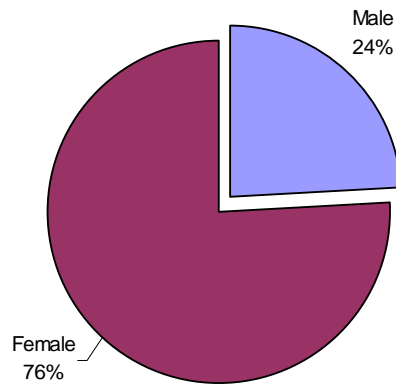
### Gender Wise CO Members In Terai Districts



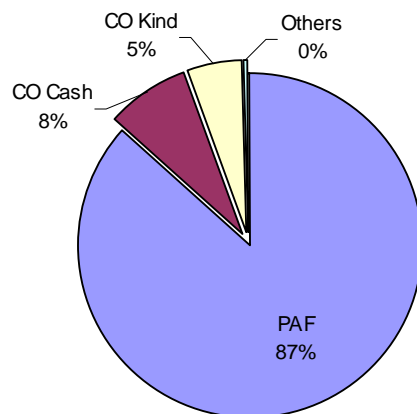
### Ethnicity Wise CO Key Position Holders In Terai Districts



### Gender Wise CO Key Position Holders In Terai Districts

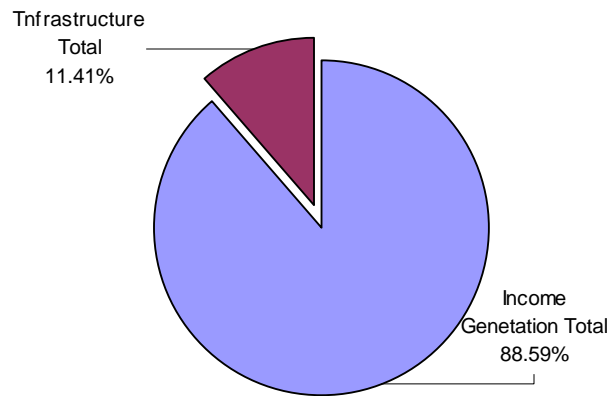


### Contribution in Sub Projects In Terai Districts





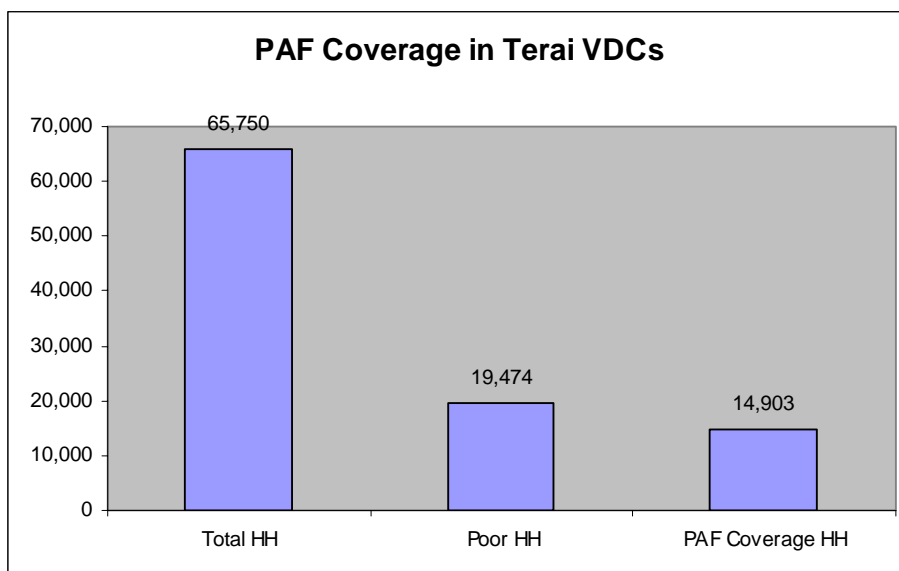
### PAF Investment In Terai Districts Income Generation Vs. Infrastructure



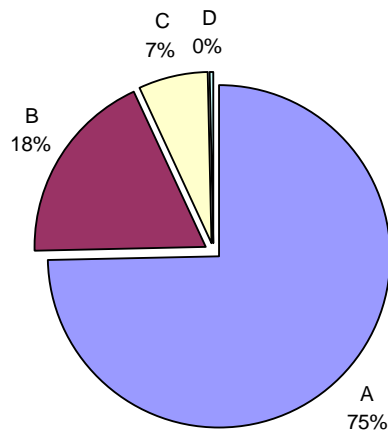
## Annex XI (2): PAF program in Terai Border VDC

District	No. of PO	Terai Border VDC		CO Redg. No.	CO Agreement No.	Terai Border VDC Households (HH)			Total Agreement PAF Amount (Rs.)
		Total VDC	PAF Coverage VDC			Total HH	Poor HH	CO Member Beneficiary HH	
Kapilbastu	6	18	13	155	155	13,826	21,430	4361	86,107,216.12
Mahottari	3	7	3	72	72	7,486	5,390	1510	27,100,193.00
Parsa	6	20	9	20	20	15,136	3,027	616	9,583,440.00
Rautahat	3	6	4	129	127	4,058	5,235	3669	67,492,411.18
Sarlahi	9	16	16	95	95	13,528	12,852	2607	45,960,540.00
Siraha	6	15	8	92	91	11,716	10,779	2140	33,079,992.00
<b>Total</b>	<b>33</b>	<b>82</b>	<b>53</b>	<b>563</b>	<b>560</b>	<b>65,750</b>	<b>58,713</b>	<b>14,903</b>	<b>269,323,792.30</b>
		100%	65%			100%		23%	

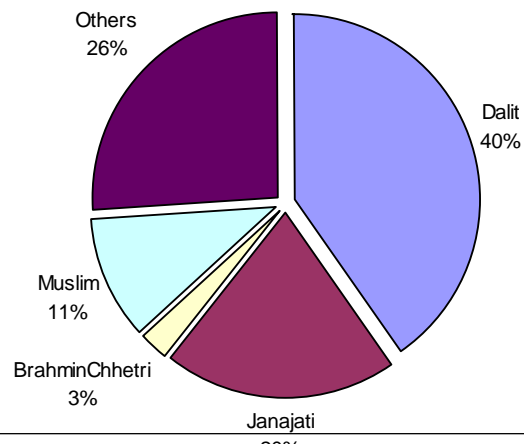
District	Total PAF Agreement Amount (Rs.)	IG No.	IG Agreement Amount (Rs.)	Infra No.	Infrastructure Agreement Amount (Rs.)
Kapilbastu	86,107,216.12	141	57,358,154.63	69	28,749,061.49
Mahottari	27,100,193.00	72	27,100,193.00		0.00
Parsa	9,583,440.00	20	9,583,440.00		0.00
Rautahat	67,492,411.18	123	65,325,664.00	5	2,166,747.18
Sarlahi	45,960,540.00	95	45,960,540.00		0.00
Siraha	33,079,992.00	91	33,075,192.00	1	4,800.00
<b>Total</b>	<b>269,323,792.30</b>	<b>542</b>	<b>16,780,645.00</b>	<b>75</b>	<b>30,920,608.67</b>
	100%		0.06		0.11



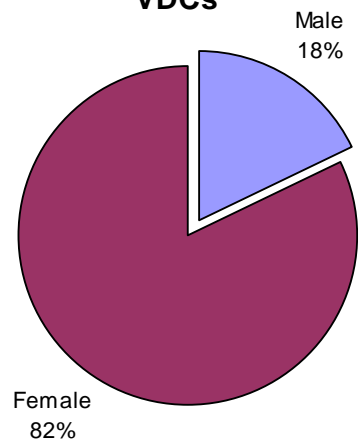
### Poverty in CO Members In Terai Border VDCs



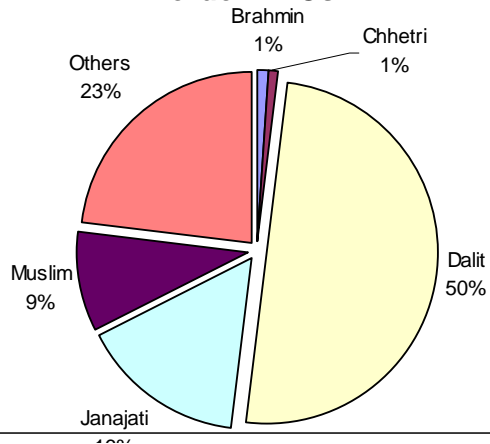
### Ethnicity Wise CO Members in Terai Border VDCs



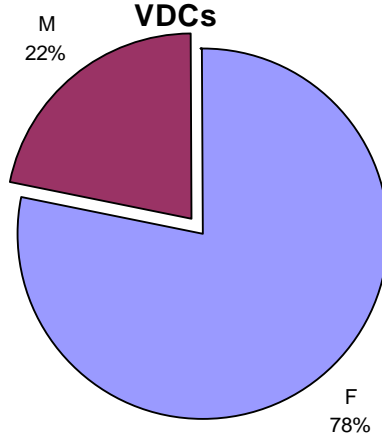
### Gender Wise CO Members In Terai Border VDCs



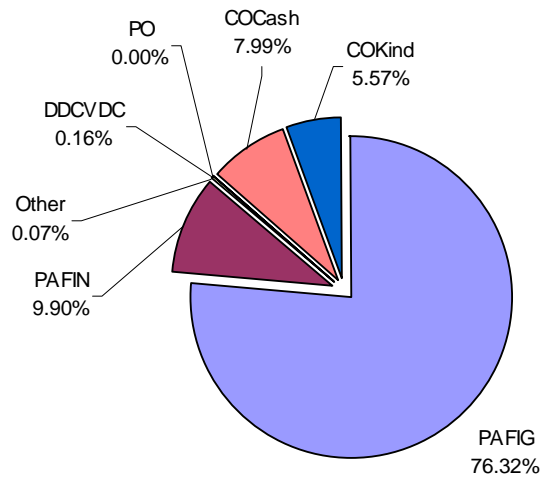
**Poverty in CO Key Position Holders In Terai Border VDCs**



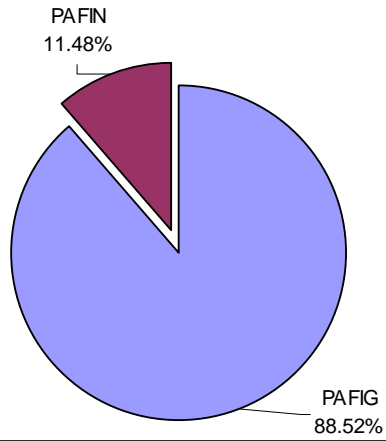
**Gender Wise CO Key Position Holders in Terai Border VDCs**



**Contribution in Sub Projects In Terai VDC**



### PAF Investment In Terai VDC Income Generation Vs. Infrastructure



## Annex XII: Collaboration at Districts

District	Collaborating with	Jointly Supported Activities/ Sub projects
Kapilbastu	District Education Office (DEO)	School Building at Dharampaniya VDC
	DDC	Wooden Bridge at Maharajanj VDC
	UNICEF	Construction of rooms for Child Class at Niglehawa VDC
	VDCS	Almost all VDCs has contributed for road, culverts and bridge sub-projects
	NEA	Rural electrification at Dharamganj VDC, Niglehawa VDC
Pyuthan	BPC/APPSP	Lift Irrigation project at Dhakhaquadi VDC
	BPC/ LFP	Lift Irrigation project at Ramdi VDC
	BPC/VDC	Lift Irrigation project at Ramdi VDC
	BPC/VDC	Lift Irrigation project at Gothibang VDC
	REDP/DDC/VDC	Micro-hydro project at Rajawara VDC
	VDC/ DDC	Link Road at Tusara VDC
	VDC	Link Road at Majkot VDC
	DEO	Bal Bikash Bhawan at Bijuwar
Mugu	DFID/CSP, VDC	Tirpa Gad Micro-hydro at Rugha VDCs
	DDC/RCIW, SNV	Brushu Sinchai - Kotdanda
	DAO	Apple farming in Rugha VDCS
	PCP/UNDP	Jhyari khola MHP- Pina
	DFDP, DDC	Sera lekh Drinking Water Supply- Seri VDC
	VDCs	In all infrastructures projects (water supply, micro-hydro, irrigation, buildings sub-projects VDCs has made cash contribution
Baitadi	REDP/UNDP, DDC, VDC	Patharkot MHP 17kw- Shikharpur
	REDP/UNDP, DDC, VDC	Irana Gad MHP 15 kw- Ganjari VDC
	VDCs	Shrebhawar DWSS. Chaukham VDCs
Siraha	DAO, Siraha	SRI extension in PAF supported COs in all DADO program VDCs.  Pilot project of Onion Farming in Bhabanipur VDC
	NEA, VDCS	Electricity Extension for Irrigation in Phulkahakati, Padariya VDCs.
	District Veterinary Office	Technical assistance to all PAF COs in Dhodna VDC
	Dabour Nepal/ANSAB	Asparagus farming and marketing
	WINROCK	Bio- Diesel demonstration
	DADO	Collaboration for all district agriculture programme
Darchula	DDC/ VDC	Drinking water supply project at Ranishikar, Eyarkut, Khandeshwori, Shankarpur, Lali VDC
	REDP	Micro-hydro project at Gokuleshowr VDC
	CARE	Micro-hydro project at Byans VDC
	VDC	School Building at Dhap, Gokuleswar, Khar, Rithachupata VDC
Dadeldhura	REDP	Railgad MHP 15kw Kailpalmandu VDCs
	Sustainable Soil Management Programme(SSMP)	<ul style="list-style-type: none"> <li>Technology support off season vegetables in Manilek and Belapur VDC</li> </ul>
	District Livestock Dev Office	<ul style="list-style-type: none"> <li>fodder plant distribution in Manilek, Koteli, Bhageswor and Belapur VDC.</li> <li>He-goat for breeding and shed construction for demonstration purpose for managed goat</li> </ul>

District	Collaborating with	Jointly Supported Activities/ Sub projects
		keeping in Manilek, Jogbudha, and Bhageshwor VDC.
	District Forestry Dev Office	<ul style="list-style-type: none"> <li>Fruit tree saplings of Rittha and Lapsi in Belapur VDC.</li> </ul>
	District Cottage and Small Industry Dev. Committee and PAF	<ul style="list-style-type: none"> <li>Technical Skill Support for the CO members for 3 month cutting and suing training to enhance skill in Bhadrapur VDCs.</li> </ul>
	REDC, DDC, VDCs and PAF	<ul style="list-style-type: none"> <li>This is joint programme for Micro hydro 15 watt power Projects in Kailpalmandu VDC</li> </ul>
	District Level PAF Monitoring and Supervision Committee Formed at DDC Office	<ul style="list-style-type: none"> <li>PAF programmes are jointly monitored by Team of Gov. Chiefs, Political Leaders, DDC, Journalists, NGO federation and others. It is done one time per year.</li> </ul>
Humla	AEPC, GEF, Nepal Trust and VDC	Syada MHP 26 kW- Syada
Bajhang	Winrock Nepal	Establishment of VSAT internet center, Hemantawada, luyata VDCs
Jumla	AEPC, VDCs	Micro-hydro -11kW at Talium VDC, Micro-hydro 22kW at Patarsi VDC
	District Agriculture Office/ Veterinary Office	Livestock and Agricultural Training
Rasuwa	District Agriculture Office	Japanese Trout Fish Farming at Gatlyang VDC
	DDC/VDC, German NRN	Phalagu Khola Bagatetear Irrigation at Laharepauwa VDC
Dhading	Room to Read, DDC, VDC	Construction of School Building at Pida VDC
Baglung	AEPC	Micro-hydro scheme 17 kW at Amarbhumi VDC
Achham	WINROCK	Information Center ( V- Sat) at Bailpata VDC
	DDC/ VDC/ REDP	Micro- Hydro project at Thandi & Kaskot VDC
Morang	Cottage & Small Industry Office	3 Month House Wearing Training for Community Members, Tankisunwari & Baujanathpur VDC
Bajura	DDC/VDC/REDP and District Agriculture Office	Mycro- Hydro projects at Kolti and Manakot VDCs. DDC and VDCs are collaborated with many School Building project. District Agriculture Office collaborated in two Cellar store projects in Pandusen VDC of Bajura
Jajarkot	AEPC	Mycro- Hydro at Khalanga VDC
	VDC	Birendra Ma. Bi. school Building at Bhagawati VDC
Mahottari	Action Aid	Women Empowerment programme at Balawa & Sarpali VDC
Ramechhap	MEDP	<ul style="list-style-type: none"> <li>Capacity building of CO at Ramechhap, Sukajor, Sunarpani &amp; Manthali VDC</li> </ul>
	District Livestock Dev Office	<ul style="list-style-type: none"> <li>Vaccination and fodder plant distribution at Okhrene VDC</li> <li>Technical support in Livestock Insurance Scheme, Lyang Lyang, Ramechhap VDC.</li> </ul>
	District Education Office	<ul style="list-style-type: none"> <li>Non-Formal Education programme at Ramapur VDC</li> <li>Budget support in School building Construction</li> </ul>
	Cooperative Divisional Office, Dolakha and PAF	<ul style="list-style-type: none"> <li>Registered Cooperative from target COs</li> <li>14 Cooperative Registered.</li> </ul>
	District Health Office	<ul style="list-style-type: none"> <li>Support for Health Kid-box for different CO of Different VDC</li> <li>Collaboration and support fund for the construction of Sub Health Post Building.</li> </ul>

District	Collaborating with	Jointly Supported Activities/ Sub projects
	District Agri Dev Office	<ul style="list-style-type: none"> <li>Fruit saplings of Junar provided to target CO members in subsidy.</li> <li>Agriculture Cooperative registered from target COs like Dairy, Vegetable and Goat raising.</li> </ul>
	Sustainable Soil Management Programme(SSMP)	<ul style="list-style-type: none"> <li>Support for technical assistance for vegetable farming</li> </ul>
	District Electricity Office, District Drinking Water and Sanitation Office, Chisapani VDC, DDC Manthali and PAF	<ul style="list-style-type: none"> <li>Partnership approach and joint venture of budget for the Lift Drinking Water by Electricity cum Solar System. The source of water is Tamakoshi River.</li> <li>About 80% task is successfully completed.</li> </ul>
	ILO, APPSP, District Agri. Dev Office, District Livestock Dev. Office, FECOFUN and PAF	<ul style="list-style-type: none"> <li>Support budget for establishment of Khimti Dairy, Khimti VDC</li> <li>Fodder grasses and fodder trees development in Khimti VDC.</li> </ul>
	District Cottage and Small Industry Dev. Committee and PAF	<ul style="list-style-type: none"> <li>Technical Skill Support for the CO members of Dhaka weaving. this is skill upgrated training in target VDCs.</li> </ul>
	AEPC, RIMREC, DDC, VDCs and PAF	<ul style="list-style-type: none"> <li>This is joint programme for Micro hydro power Projects in Pritee, Gupteswor, Doramba, Daduwa, Phulasi, Kuvukasthali, Banti, Gothagoun and Bijulikot VDCs.</li> </ul>
	District Level PAF Monitoring and Supervision Committee Formed at CDO/DDC Office	<ul style="list-style-type: none"> <li>PAF programmes are jointly monitored by Team of Gov. Chiefs, Political Leaders, DDC, Journalists, NGO federation and others. It is done two times per year.</li> </ul>
	SDC and PAF	<ul style="list-style-type: none"> <li>The programme run without duplication in the same working VDCs in Income generating and Infrastructure sub projects.</li> </ul>
	BASP Nepal(Biogas) and PAF	<ul style="list-style-type: none"> <li>Support in construction of Bio gas Plant.</li> </ul>
Kavre	DDC/ VDC/ CIAM	Lift Drinking Water project at Jamdi VDC
Sindhuli	DDC, VDC, Forest User Groups, DEO, Constituent Assembly members , WDO, DLSO	<p>To construct a mechanized bridge in Tandri VDC, DDC Sindhuli, Tandri VDC, Belshrot VDC of Udaypur district and a few constituent assembly members of Sindhuli and Udayapur districts provided Rs 3284609 out of it's total cost Rs 6784609. Likewise, to construct a drinking water subproject in Pipamadi, VDC provided Rs 500000 To support a school building in Mahendrajhayadi DEO, Sindhuli provided Rs 266055. DLSO Sindhuli has been providing vaccination and other trainings related to livestock in many PAF program VDCs in Sindhuli. WDO, Sindhuli conducted non formal education training classes in 20 COs</p>
Doti	AEPC/DDC/VDC	2 Micro-Hydro at Toleni VDC and 2 in Daud VDC
	Dipayal Silgadhi Nagarpalika & Samuhik Abhiyan	School Building construction at D.S.N.P-5
	VDCs	For constructing school building at Pokhari and Ganjari VDCs



## Annex XIII: Community Institutional Development

### List of CO Federations in Districts

S.N.	District	No of CO Federation	Specific Objectives/Activities
	Accham	18	Five federations have been formed for Pasu Bima Programme, 2 for ICT ( <i>Information and communication technologies</i> ) at Bayalpata, 2 for construction of micro hydro sub projects, 5 for school buildings and 4 for solar school systems at various VDCs.
1	Bajhang	1	Seven COs from Hemantawada and Luyata VDC have been federated to run a Seti Saipal V-SAT Center at Chainpur to promote capacity building, entrepreneurs' skill and knowledge at local level.
2	Bajura	13	13 federations have been formed for following activities in Bajura <ul style="list-style-type: none"> <li>• 9 federations for School building construction</li> <li>• 2 federations for water supply project</li> <li>• 2 federations for Micro Hydro project</li> </ul>
	Dadeldhura	16	16 Federations have been made for the following activities; <ul style="list-style-type: none"> <li>• 9 federations for School building construction in 7 VDCs i.e. Jogbudha, Shirsha, Shirsha, Bhadrapur, Alital, Bhageshwor, Koteli and Manileka.</li> <li>• 5 Federations for Drinking Water Supply Scheme in 5 VDCs i.e. Ghankhet, Bhadrapur, Mastamandu and Nvadurga.</li> <li>• 2 Federations for suspended bridge projects in 2 VDCs i.e. Ajaimeru and Navadurga.</li> </ul>
2	Darchula	14	11 CO federations have been formed to implement micro hydro sub project and three CO federations to implement electric line extension schemes at various VDCs.
3	Doti	10	10 Federations have been made for the following activities; <ul style="list-style-type: none"> <li>• 4 federations for School building construction in 4 VDCs named Pokhari, Ganjari, Gairagaun, Basudevi.</li> <li>• 3 Federations for Drinking Water Supply Scheme in 3 VDCs named Bhumirajmandau, Daud and Toleni.</li> <li>• 2 Federations for micro hydro projects in 2 VDCs named Daud and Toleni.</li> <li>• 1 Federation for constructing a health post building in Ranagaun VDC.</li> <li>• Formed 29 COs networking in 29 VDCs for practicing their higher level organization.</li> <li>• Established a cooperative in Toleni VDC for running &amp; maintaining a micro-hydro projects involving 3 COs.</li> </ul>
4	Kalikot	2	Two CO federations have been formed to implement a micro hydro sub project at Phoi mahadev VDC and a pico hydro sub project at Chilkhaya VDC for rural electrification.
5	Kapilvastu	1	357 buffalo raising farmers of 5 VDCs namely Ganeshpur, Biddhyanagar, Bhagamanpur, Sirshihawa and Ramnagar have been federated and formed Shivam Dugdha Utpadak CO for collecting milk and operating chilling centre and cattle insurance scheme for members.
6	Mugu	3	Two federated COs have been formed for constructing and operating micro hydro scheme for rural electrification and one for micro irrigation.
7	Pyuthan	44	41 CO federations has been formed for implementation of different infrastructure sub projects like link road, drinking water, irrigation, micro hydro, school building in various VDCs. Two CO federations have been formed to operate community livestock Insurance program in Tusara and Bangesal VDC. One CO federation has been formed for the establishment of Vegetable Collection Centre at Lung VDC.
8	Rautahat	9	9 CO federations have been formed in 9 VDCs for livestock management and insurance policy
9	Sindhuli	12	To implement infrastructure schemes like rural road, irrigation, drinking water, mechanized bridge etc.

10	Siraha	9	One federated CO for operating a chilling centre at Bishnupurkalti VDC and another one to run breeding centre at Dhodhana and Bhadaiya VDC Five CO federations have been formed to construct culverts in various VDCs Two CO federations have been formed in Mukshar VDC to construct to construct Agriculture roads
11	Rukum	5	4 Water Users group and 1 school users group
12	Dailekh	9	One federation for Drinking Water Supply Project and 8 Federation for School Building Project.

#### List of Cooperatives formed through CO's initiatives in Districts

S.N.	District	No of Cooperatives	Specific Objectives/Activities
1	Accham	35	To manage all COs within the VDC.
2	Darchula	9	Six cooperatives have been established in 6 VDCs to provide saving and credit services to CO members Three cooperatives established to provide electricity extension and distribution service by leasing agreement with NEA.
3	Kapilvastu	1	A multipurpose cooperative has been established to run agro vet service and milk collection & marketing center
4	Mugu	1	Rara Bahuudesiya cooperative has been established with the joint efforts of 11 COs of three VDCs namely Pina, Karkiwada and Shreenagar to provide agro-vet services to its members, to establish hatchery and make available chicks in district for its members To run dairy at district headquarter collecting milk from its members.
5	Pyuthan	2	Two cooperatives have been established at Arkha and Rajbara VDC to manage revolving fund & saving credit fund, provide micro finance services to its members and for institutional development and sustainability of CO efforts.
6	Rautahat	2	A cooperative has been formed in Bishanpurwar Manpur VDC to establish and operate milk chilling center for marketing milk products produced by the members. A cooperative has been established at Santapur Dostiya VDC to provide saving and credit service for agricultural and livestock management
7	Siraha	1	Three COs in Muskar VDC are in process to register Cooperative to run saving credit and provide technical services to its member
8	Chitwan	1	Eight different COs in Khaireni VDC have teamed up to form a multi-purpose cooperative. 90 per cent of the cooperatives members are women. They are carrying cooperative farming in lease-land, marketing of vegetable products and saving credits, among others.
9	Makwanpur	1	One Cooperative ( Basamadi Agriculture Chepang Cooperative Org.) has been formed with collaborative efforts of 3 Community Organizations at Basamadi VDC.

## Annex XIV: Summary Results of Follow-on Impact Survey

Selected Indicators	Programme area			Control area			% Difference
	2006	2009	Difference	2006	2009	Difference	
<b>1. Consumption and income</b>							
Nominal HH consumption per capita (Rs.)	15,087	17,796	2,709	13,684	15,549	1,865	45.3
HH consumption only for those who received money 2 yrs ago	17,801	21,961	4,160				23.4
Nominal HH income per capita (Rs.)	13,578	15,119	1,541	13,435	14,212	777	98.3
HH income only for those who received money 2 yrs ago	11,517	13,675	2,158				18.7
<b>Bi-variate regression result</b>							
Effect of PAF activities (in month) on consumption	b = 0.074 (p = 0.002); N = 258						
Effect of PAF activities (in month) on income	b = 0.135 (p = 0.004); N = 257						
<b>2. Employment: Average Hours of Work in a Week (hours)</b>	29.9	35.4	5.5	31.1	39.6	8.5	-35.3
<b>3. Migration and remittance</b>							
Migration rate (%)	14.0	15.0	1.0	19.0	18.1	-0.9	-211.1
Remittance sent during last 12 months (%)	39.0	41.1	2.1	28.0	35.4	7.4	-71.6
<b>4. Health and nutrition</b>							
% Women below 18.5 BMI	27.6	22.2	-5.4	15.4	12.5	-2.9	86.2
Under five mortality (per 1000)	10.0	4.3	-5.8	9.0	-	-	-
<b>5. Current schooling</b>							
Ever attended school (%)	51.8	53.0	1.2	57.6	63.8	6.2	-80.6
Currently attending school (%)	60.5	62.9	2.4	58.3	67.5	9.2	-73.9
<b>6. Social environment</b>							
Discrimination faced by HH members (%)	7.6	7.0	-0.6	7.3	7.8	0.5	-220.0
Discrimination faced by community members (%)	15.2	12.8	-2.4	13.1	24.0	10.9	-122.0
Community dispute during last 12 month (%)	13.9	7.4	-6.5	7.3	10.2	2.9	-324.1
<b>7. Women empowerment</b>							
Women participation in social/ development organization (%)	10.9	15.9	5.0	10.7	12.7	2.0	150.0
Collective decision in HH matter (all member)	33.5	16.4	-17.1	50.9	5.9	-45.0	-62.0
Freedom of mobility (%)	55.0	61.3	6.3	52.8	66.6	13.8	-54.3

## Annex XV: Progress and Expenditure in FY 2066/ 067 (2009-10 Only)

<b>Program Physical Implementation Status - FY-2066/67(2009/10)</b>			
<b>Description</b>	<b>Yearly Target</b>	<b>Physical Progress</b>	<b>Progress %</b>
Income Generation Sub Projects	2947	3405	115%
Infrastructure Sub Projects	770	674	87%
Innovative Sub-Projects	206	98	47%
<b>Total Sub-Projects</b>	<b>3923</b>	<b>4177</b>	<b>106%</b>
<b>Partner Organization</b>	<b>400</b>	<b>409</b>	<b>102%</b>
<b>Beneficiary HHs</b>	<b>1,50,000</b>	<b>155,127</b>	<b>103%</b>

Note: District wise progress details are provided in the next page

<b>Program Funding Status of FY-2066/67 (2009/10)</b>			
<b>Descriptions</b>	<b>Target</b>	<b>Progress</b>	
	<b>Yearly Budget in'000' Rs.</b>	<b>Yearly Expenditure</b>	<b>% Expenditure in Budget</b>
<b>Block Grant to Cos</b>			
Income Generation Sub Projects	1,294,183.00	1,390,638.00	107.45
Infrastructure Sub Projects	489,257.00	431,438.00	88.18
Innovative Sub-Projects	77,605.00	28,523.00	36.75
<b>Total Sub-Projects Block Grants (A)</b>	<b>1,861,045.00</b>	<b>1,850,599.00</b>	<b>99.44</b>
Partner Organization	491,297.00	475,826.00	96.85
Goods & Equipment, Vehicle And Furniture	35,633.00	11,703.00	32.84
Consultancy, Training, Workshop, Seminar	229,586.00	50,891.00	22.17
Incremental Operating Expenses	106,156.00	92,030.00	86.69
<b>Sub Total (B)</b>	<b>862,672.00</b>	<b>630,450.00</b>	<b>73.08</b>
<b>Grand Total (A+B)</b>	<b>2,723,717.00</b>	<b>2,481,049.00</b>	<b>91.09</b>

## Annex XV (2): Progress and Expenditure in FY 2066/ 067 (2009-10 Only)

### District Wise Progress Status FY 2066/67 (2009/10)

S.No.	Districts	Target				Actual Progress				Achievement in % of Target			
		No			Rs.	No			Rs.	%			%
		IG	INFRA	Tot	Budget	IG	INFRA	Total	Expenditure	IG	INFRA	Total	Expenditure
1	Darchula	118	67	185	116,565,284	154	156	310	118,447,305	131%	233%	168%	102%
2	Kapilbastu	108	16	124	47,597,000	104	35	139	79,175,959	97%	219%	113%	166%
3	Mugu	15	15	30	25,409,842	55	1	56	25,035,212	367%	7%	188%	99%
4	Pyuthan	92	34	126	118,152,435	68	34	102	133,377,127	74%	99%	81%	113%
5	Ramechhap	90	30	120	63,208,000	183	55	238	140,508,535	203%	183%	198%	222%
6	Siraha	110	10	120	75,337,013	351	3	354	91,428,005	319%	30%	295%	121%
	<b>6 Total</b>	<b>533</b>	<b>172</b>	<b>705</b>	<b>446,269,573</b>	<b>915</b>	<b>284</b>	<b>1,199</b>	<b>587,972,144</b>	<b>172%</b>	<b>165%</b>	<b>170%</b>	<b>132%</b>
1	Achham	100	31	131	57,199,739	73	6	79	35,516,211	73%	19%	60%	62%
2	Baitadi	174	28	201	73,762,036	159	28	187	66,390,969	92%	101%	93%	90%
3	Bajhang	43	46	89	34,450,000	77	68	145	55,154,411	179%	148%	163%	160%
4	Bajura	121	43	165	86,830,543	122	33	155	90,246,863	101%	76%	94%	104%
5	Dadeldhura	35	10	45	22,093,229	134	18	152	53,101,393	383%	175%	336%	240%
6	Dailekh	124	15	139	106,102,722	128	12	140	90,431,125	103%	80%	101%	85%
7	Dolpa	92	20	112	48,791,693	47	4	51	34,873,920	51%	20%	46%	71%
8	Doti	33	11	44	20,672,909	93	7	100	49,430,741	282%	64%	227%	239%
9	Humla	85	19	104	37,118,902	53	9	62	40,175,348	62%	49%	60%	108%
10	Jajarkot	51	14	65	50,275,823	56	11	67	18,776,299	110%	80%	103%	37%
11	Jumla	96	28	124	73,387,369	171	11	182	88,345,675	178%	40%	147%	120%
12	Kalikot	150	55	205	94,869,064	108	10	118	39,890,794	72%	18%	58%	42%
13	Mahottari	80	30	111	62,781,404	94	0	94	54,092,191	117%	0%	85%	86%
14	Rasuwa	40	10	50	16,030,153	43	4	47	81,788	108%	40%	94%	5%
15	Rautahat	260	11	271	187,450,353	233	20	253	195,327,461	90%	190%	94%	104%
16	Rolpa	71	2	73	29,613,596	26	0	26	11,702,146	37%	0%	36%	40%
17	Rukum	51	18	69	22,757,927	90	20	110	23,509,685	176%	111%	159%	103%
18	Sarlahi	100	0	100	28,320,000	353	0	353	143,348,228	353%		353%	506%
19	Sindhuli	63	34	97	64,349,277	152	64	216	108,815,607	241%	188%	223%	169%
	<b>19 Total</b>	<b>1,769</b>	<b>424</b>	<b>2,194</b>	<b>1,116,856,739</b>	<b>2,212</b>	<b>325</b>	<b>2,537</b>	<b>1,199,946,954</b>	<b>125%</b>	<b>77%</b>	<b>116%</b>	<b>107%</b>

	<b>25 District Total</b>	<b>2,302</b>	<b>596</b>	<b>2,898</b>	<b>1,563,126,312</b>	<b>3,127</b>	<b>609</b>	<b>3,736</b>	<b>1,787,919,098</b>	136%	102%	129%	114%
1	Bara	45	8	53	15,975,000	0	0	0		0%	0%	0%	0%
2	Bardiya	46	2	48	10,140,000	0	0	0		0%	0%	0%	0%
3	Dhanusa	78	6	84	20,520,000	0	0	0		0%	0%	0%	0%
4	Dhading	45	44	89	34,403,825	16	1	17	15,432,723	36%	2%	19%	45%
5	Khotang	30	11	41	8,235,000	0	0	0		0%	0%	0%	0%
7	Panchthar	34	3	37	8,964,000	0	0	0		0%	0%	0%	0%
14	Terathum	36	12	48	11,160,000	0	0	0		0%	0%	0%	0%
6	Okhaldhunga	26	0	26	5,418,000	0	0	0		0%		0%	0%
8	Parsa	98	32	130	34,944,000	73	0	73	18,351,561	75%	0%	56%	53%
9	Salyan	16	24	40	10,560,000	6	4	10	4,609,100	38%	17%	25%	44%
10	Saptari	24	3	27	5,040,000	0	0	0		0%	0%	0%	0%
11	Sindhupalchok	48	12	60	13,575,000	0	0	0		0%	0%	0%	0%
12	Solukhumbu	28	2	30	8,865,000	0	0	0		0%	0%	0%	0%
13	Taplejung	50	11	61	13,650,000	0	0	0		0%	0%	0%	0%
15	Udayapur	44	5	49	10,635,000	0	0	0		0%	0%	0%	0%
	<b>15 Total</b>	<b>646</b>	<b>174</b>	<b>819</b>	<b>212,084,825</b>	<b>95</b>	<b>5</b>	<b>100</b>	<b>38,393,383</b>	15%	3%	12%	18%
	<b>40 District Total</b>	<b>2,947</b>	<b>770</b>	<b>3,717</b>	<b>1,775,211,137</b>	<b>3,222</b>	<b>614</b>	<b>3,836</b>	<b>1,826,312,481</b>	109%	80%	103%	103%
1	Chitwan	11	3	14	3,769,600	16	16	32	4,613,163	145%	552%	230%	122%
2	Kanchanpur	0	0	0	0	15	0	15	3,237,600				
3	Kavre	0	0	0	0	0	0	0					
4	Makwanpur	5	8	13	12,349,327	12	9	21	16,435,839	240%	113%	162%	133%
5	Morang	0	0	0	0	17	0	17					
6	Other innovative projects	63	0	63	22,959,936	0	12	12		0%		19%	0%
	<b>Innovative Total</b>	<b>79</b>	<b>11</b>	<b>90</b>	<b>39,078,863</b>	<b>60</b>	<b>37</b>	<b>97</b>	<b>24,286,602</b>	76%		108%	62%
	<b>Overall Total</b>	<b>3,026</b>	<b>781</b>	<b>3,807</b>	<b>1,814,290,000</b>	<b>3,282</b>	<b>651</b>	<b>3,933</b>	<b>1,850,599,083</b>	108%		103%	102%

Note: Since PAF programme is demand driven, the district allocation may vary as per the actual demand

## Annex XVI: Poverty Alleviation Fund Project – II Progress Status

### Performance Indicator vs Status

Sn	Indicator	MID TERM TARGET (On or about 30 June 2010)	FINAL TARGET (On or about 30 Sept 2012)	Present Status (as of 16 Jul 2010)
1	Number of Sub Projects	2500	6000	9954
2	Number of Groups of Beneficiaries	3500	7000	9039
3	Percentage of Women Membership in Groups	25%	40%	77%
4	Percentage of Dalit Membership in Groups	10%	20%	23%
5	Percentage of Indigenous Membership in Groups	10%	20%	26%
6	Percentage of Madhesi Membership in Groups	10%	20%	33%
7	Number of VDCs Covered	600	1200	862
8	Amount of Contribution of Communities (Total) US\$	2,000,000	7,000,000	13,196,851
	Cash			5,753,994
	Kind			7,442,857
9	Number of Beneficiaries Trained	1500	3000	240816

Note: @ \$1 = Rs. 70

### Summary Status

Heading		Number	Amount (NRs.)
Community Organisations(CO) Registered with PAF		9,298	
CO Federation Registration		434	
PAF Investment in CO	Agreement	9,039	5,229,881,948.36
	Income Generating (IG) Activities	8,497	3,991,771,546.12
	Community Infrastructure	1,487	1,238,110,402.24
Partner Organisations (PO)		409	
Districts Covered	Total	35	
	Regular PAF Districts	40	
	Phase I (6 Districts)	6	
	Phase II (19 Districts)	19	
	Phase III (15 Districts)	15	
	Innovative Programme	6	
	NDM-World Bank Innovative Prog.	0	
VDC Covered	POs Working	1,657	
	COs Programme Activity	888	
CO Member HHs			<b>Percentage</b>
Poverty Ranking	Total	240,816	
	Hardcore Poor (Ka)	154,143	64.01%
	Medium Poor (Kha)	64,978	26.98%
	Poor (Ga)	21,669	9.00%
	Marginal Non-Poor (Gha)	26	0.01%
Gender	Male	53,567	22.24%
	Female	187,249	77.76%
Ethnicity	Dalit	54,333	22.56%
	Janajati	62,991	26.16%
	Others	123,492	51.28%
Total Beneficiary HH	Total	356,652	
Ethnicity	Dalit	83,689	
	Janajati	88,972	
	Others	183,991	

## Annex XVII: Ranking of Districts based on Composite Index of 28 Socio-Economic Indicators)

Overall Composite Index
National Value: 0.47269

Group A		
District	Rank	Composite Index
Kathmandu	1	1.00000
Bhaktapur	2	0.94228
Lalitpur	3	0.87434
Chitawan	4	0.71278
Kaski	5	0.70404
Kavre	6	0.64372
Palpa	7	0.61285
Rupandehi	8	0.60565
Syangja	9	0.60197
Tanahu	10	0.58173
Jhapa	11	0.55714
Ilam	12	0.55623
Dhankuta	13	0.55584
Mustang	14	0.55201
Makwanpur	15	0.54841
Baglung	16	0.53291
Parbat	17	0.52436
Kanchanpur	18	0.52062
Sankhuwasabha	19	0.50255
Manang	20	0.49750
Kailali	21	0.49575
Dang	22	0.49242
Sunsari	23	0.49167
Banke	24	0.49080
Gorkha	25	0.48985

Group B		
District	Rank	Composite Index
Nuwakot	26	0.47767
Arghakanchi	27	0.46901
Lamjung	28	0.46694
Morang	29	0.46646
Nawalparasi	30	0.46289
Surkhet	31	0.46244
Bhojpur	32	0.45165
Gulmi	33	0.44916
Myagdi	34	0.44585
Dolakha	35	0.43765
Terhathum	36	0.43174
Dhanusa	37	0.41438
Bardiya	38	0.40130
Parsa	39	0.39876
Taplejung	40	0.38708
Dhading	41	0.38682
Panchthar	42	0.38532
Sindhupalchoke	43	0.37532
Solukhumbu	44	0.36443
Udayapur	45	0.36209
Saptari	46	0.35705
Salyan	47	0.35475
Khotang	48	0.35223
Bara	49	0.35200
Okhaldhunga	50	0.34404

Group C		
District	Rank	Composite Index
Sindhuli	51	0.34369
Sarlahi	52	0.33555
Rautahat	53	0.31535
Pyuthan	54	0.31502
Kapilbastu	55	0.31194
Ramechhap	56	0.30545
Baitadi	57	0.29367
Rukum	58	0.28686
Rasuwa	59	0.28023
Darchula	60	0.27206
Mahotari	61	0.26799
Jajarkot	62	0.26047
Doti	63	0.24781
Siraha	64	0.23094
Dadeldhura	65	0.22553
Rolpa	66	0.21651
Dailekh	67	0.21272
Jumla	68	0.20902
Kalikot	69	0.15247
Dolpa	70	0.13668
Bajura	71	0.11027
Achham	72	0.10632
Bajhang	73	0.05931
Humla	74	0.00414
Mugu	75	0.00000

Source: District Level Indicators of Nepal for Monitoring Overall Development (Based on Selected Socio-Economic Indicators), National Planning Commission Secretariat, Central Bureau of Statistics, 2003



*List of 28 Indicators Used for Aggregation of Indicators for District Ranking*

<b>SN</b>	<b>Indicators</b>	<b>SN</b>	<b>Indicators</b>
1	Access to improved source of drinking water	15	Ratio of girls to boys in primary education
2	Access to toilet facility	16	Student teacher ratio in secondary education
3	Proportion of households having electricity facility	17	Literacy rate of population 15-24 years
4	Proportion of households using solid fuels for cooking	18	Ratio of literate female to literate male 15-24 years
5	Proportion of households having radio facility	19	Share of women in wage employment in non-agriculture sector
6	Telephone lines per thousand population	20	Employment to population of working age ratio
7	Road density (length/sq.km. Area)	21	Proportion of children 10-14 who are working
8	Singletoned mean age at marriage female	22	Proportion of urban population
9	Child dependency ratio	23	Yield of vegetables
10	Incidence of ARI per 1000 children < 5 years	24	Yield of fruits
11	Incidence of diarrhea per 1000 children < 5 years	25	Yield of cash crops
12	Proportion of malnourished children under 3 years	26	Yield of fisheries
13	Reported death per 1,000 population	27	Yield of cereal crops
14	Primary school net enrolment ratio	28	Yield of pulses

## **Annex XVII(1): VDC Prioritization Indicators**

Overall composite indices is calculated as weighted average of these two indices in the ration of 70%:30%.

### **A. Vulnerable Community Specific Composite Index (VCSCI)**

#### **1. Vulnerable Community Population Index (VCPI)**

1. Dalit and Indigenous Population Index (DIPI)
2. Female Headed Household Index (FHI)

#### **2. Empowerment Index (EmI)**

1. Vulnerable Group Participation Index (VGPI)
2. Decision Making Status and Voice Index (DMSVI)
3. Gender Awareness Index (GawI)

### **B. General Poverty Composite Index (GPCI),**

#### **3. Accessibility Index (AI)**

- **4. Social Development Index (SDI)** includes five indicators namely,

1. Education Index (EI)
2. Health (Longevity) Index (HI)
3. Water Supply Index (WSI)
4. Sanitation Index (SI)
5. Other Infrastructure Index(OII)

#### **5. Economic Status Index (Ecl)**

1. HH with Food Sufficiency [Food Sufficiency Index (FSI)]
2. % of Malnutrition Free HHs [Malnutrition Index (MI)]
3. Landless HHs [Landless Index (LI)]
4. HHs having no agricultural possessions (land + poultry + livestock) [Agricultural Possessions Index (API)]
5. HHs not having any economic activities [Economic Activities Index (EAI)]
6. Average Annual Income of HHs [Income Index (Icl)]

## Annex XVIII: Phase wise PAF Programme District Coverage

