

# **Poverty Alleviation Fund (PAF) Program Implementation Status**

**(as of 14 June 2008)**

Poverty Alleviation Fund (PAF) is implementing targeted demand-driven community based program directly supporting the third pillar of Tenth Plan/ Poverty Reduction Strategy Paper-PRSP of the Government of Nepal (GoN), i.e. targeted program (Annex-I: PAF program at a glance). Presently PAF is implementing its program in 45 districts. Initially it selected six districts viz. Darchula, Mugu, Pyuthan, Kapilbastu, Ramechhap and Siraha for programme implementation. From the FY 2062/63 (2005/06 AD), 19 additional districts are selected as PAF special programme districts (Achham, Baitadi, Bajhang, Bajura, Dadeldhura, Dailekh, Dolpa, Doti, Humla, Jajarkot, Jumla, Kalikot, Mahottari, Rasuwa, Rautahat, Rolpa, Rukum, Sarlahi and Sindhuli). With this, PAF now covers all the 25 districts from Group-C categorized as most deprived districts by CBS/NPC based on 28 poverty related social-economic indicators (Annex-X). Besides working in these project districts, PAF is implementing innovative programme in other 20 districts as well under the special innovative window programme to capture replicable innovative initiatives to reach to the poor. The current PAF program districts are shown in Annex-II.

## **Program Implementation through Community Organizations: Demand-Driven Community Proposal and Direct Funding**

Till date 7,857 community organizations (COs) are registered in PAF (3,059 in Initial 6 Districts, 4,526 in Additional 19 Districts and rest 272 are through Innovative Window Programme Districts). Accordingly, community proposals are also prepared with participatory planning process. Out of total registrations, PAF made agreement with 7,258 COs (2,932 are in Initial 6 Districts, 4,066 in Additional 19 Districts and rest 260 in Innovative Window Programme Districts) and community are implementing the sub-project (The district wise details on CO registration and agreement are shown in Annex-V). Based on community demand, several different activities related to Income Generation and Infrastructure sub-projects are proposed and included in the program implementation. Income generation activities are related to agriculture, livestock, cottage industries, trade and services. Similarly, infrastructure are related to micro-irrigation, link road, culvert/bridges, micro-hydro, water supply, sanitation, school and health post buildings. Program activities, in general, being implemented by the community are listed in Annex-III.

The agreement made with 7,258 COs amounts to NRs. 3,334,394,621 and it is in the process of disbursement to Community Accounts. Till date NRs 2,652,704,193 is disbursed to community non-operating account and NRs 2,043,690,987 is disbursed to community operating account. The community fund flow modality is shown in Annex-IV and details on CO agreement and disbursement status is shown in Annex-V.

In FY 2061/62 (2004/05), the agreements were made with 595 COs amounting to NRs. 240,197,944 in the FY 2062/63 (2005/06), the agreement was made with 1,070 additional COs amounting to NRs 526,156,592, in FY 2063/64 (2006/07), the agreement is made with 3,311 additional COs amounting to Rs. 1,347,157,549 and in this FY 2064/65 (2007/08), the agreement is made with 2881 additional COs amounting to Rs. 1,220,882,536 till date.

The community sub projects are in different stages of implementation. Second level of demand and proposals are also started receiving upon completion of first sub projects. A list of sub-projects completed and Physical achievements of sub-projects are provided in Annex-VI.

Additionally, PAF considered financing 12 out of 20 winning innovative proposals of Nepal Development Market Place (NDM)-World Bank. Agreements are made with those 12 POs that amounts NRs. 14,758,416 to work in 25 VDC of Bajura, Chitwan, Dolakha, Kailali, Kanchanpur, Kathmandu, Myagdi, Morang, Panchthar, Parsa, Saptari, and Syangja districts serving about 8,634 poor households. Till date, NRs. 14,298,492 is disbursed and implementation is in different stages. Furhter PAF is monitoring the World Bank financed remaining 8 NDM projects in Dang, Khotang and Tanahun districts.

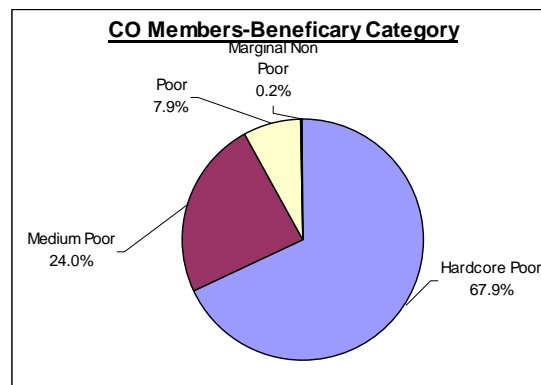
## Facilitation and Community Support through Partner Organizations

The objectives of PAF to select Partner Organizations (POs) are to facilitate Community Organisations (COs). The facilitation shall be in organising COs, their capacity development, planning activities, carryout detailed survey design & estimates, proposal submission, as well as technical assistance and monitoring during implementation. As such, 221 Partner Organizations (POs) are working with communities (68 for Initial 6 Districts, 129 for Additional 19 Districts, 12 for Innovative Window program and 12 for Innovative NDM-World Bank Programme). Eleven POs are dropped due to their poor performance and inability to work. Till date POs facilitated in total 808 VDCs (278 in Initial 6 Districts, 445 in Additional 19- Districts, 60 in Innovative Window Programme Districts and 25 in NDM-World Bank Programmes) and Community Organizations (COs) are working in those VDCs. Till date 266,236 households in those VDCs are served. A detailed district wise PO, COs and coverage are shown in Annex-VII.

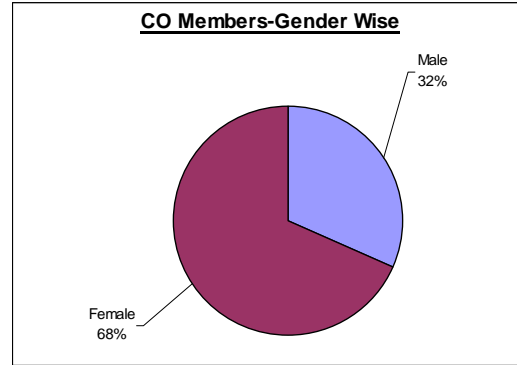
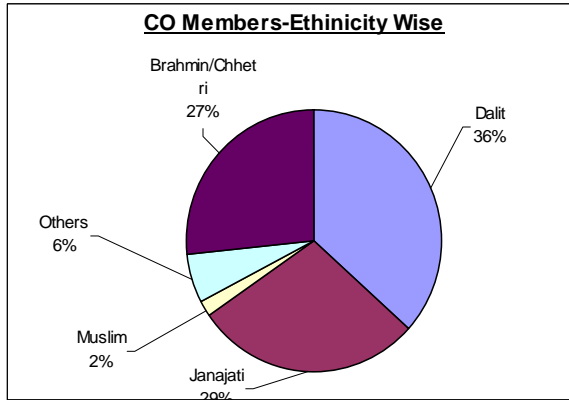
## Reaching out to Excluded Poor Community Beneficiaries and Social Inclusion

PAF has taken the strategy to support the idea that poor community should be organized themselves to prepare, implement and manage their program and they should be in the driving seat, with decision making authorities. A social inclusion strategy to reach out to the poor specifically poor women, dalit and janjati are taken (Annex-VIII). Participatory community well- being ranking process identified the poor community members as primary beneficiaries at the settlement level. They are organized into community organization to plan, implement and manage the sub-projects.

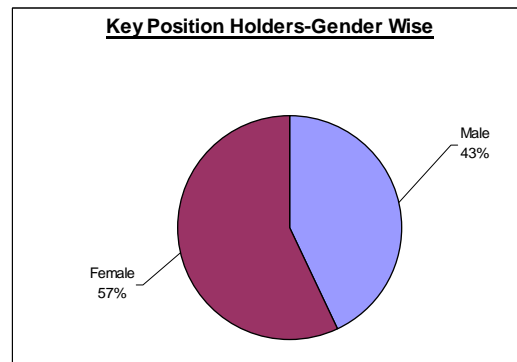
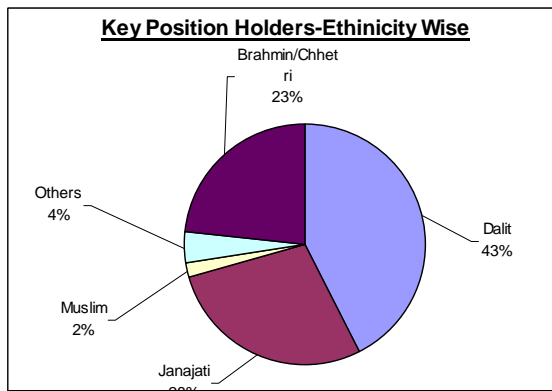
Among beneficiaries members in Community Organizations (COs), 67.9% members falls under hardcore poor category (food sufficiency less than 3 months among criteria fix by community), 24% members falls under medium poor category (food sufficiency more than 3 months but less than 6 months among criteria set by the community), 7.9% members falls under poor category (food sufficiency more than 6 months but less than a year among criteria set by the community) and 0.2% members falls under marginal Non-poor Category.



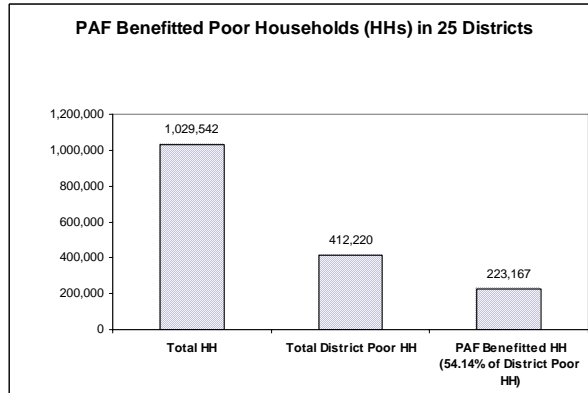
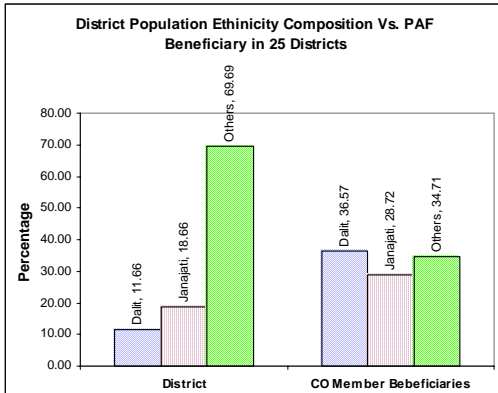
Likewise, CO member households constitutes 36% dalit, 29% janajati, 2% Muslim, 27% Brahmin/Chhetri and 6% Other ethnicity. Gender wise, 68% are female members in Community Organizations (COs).



Similarly, the key position holders in the community organisation such as President, Treasurer, Secretary constitutes, 43% Dalit, 28% Janajati, and 2% Muslim and 22% Brahman/Chhettri, and 4% other ethnicity. Gender wise, 57% are female key position holders in Community Organizations (COs).



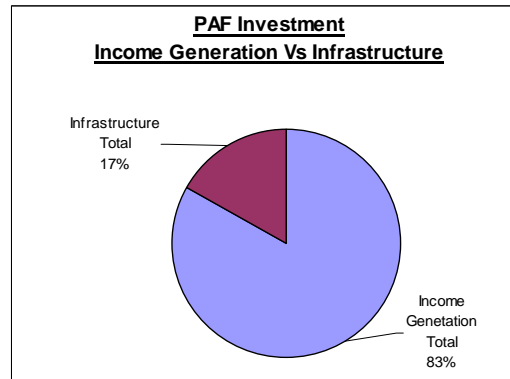
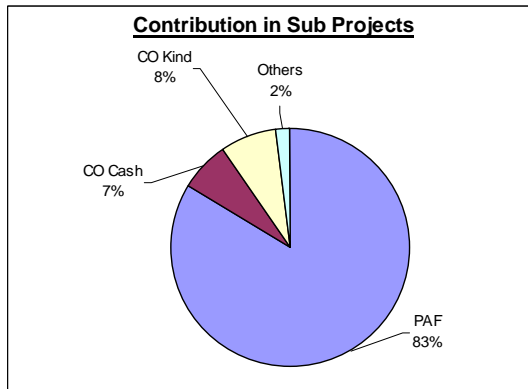
When percentage beneficiary of PAF by ethnicity is compared with district percentage ethnicity composition as shown in the graph below it is clear that PAF is focusing on socially excluded group such as Dalit and Janajati. In an overall, PAF till now benefited 54.14% of poor households in 25 districts.



## Program Cost Sharing

PAF is investing 83% of the total sub-project cost. Community sharing is 15% (7% in Cash and 8% in Kind) of the total sub-project costs whereas other organizations mainly VDC/DDC are sharing 2% in total sub-project cost. In Income Generating sub projects, community is sharing 9% in cash and 3% in kind whereas in Infrastructure sub projects, it is 1% in cash and 23% in kind.

Out of the total PAF investment, 83% is in Income Generating sub-projects and 17% is in Infrastructure sub-projects. The sub-project activities undertaken are shown in Annex-III.



## Community Institutional Development

Community institutionalization process is also emerging in some of the pilot districts where community felt need to federate themselves for certain function. Multi-purpose co-operatives, co-operatives for single function and federation of COs are formed as per communities felt need. The following table shows institutions formed and objectives of those institutions.

District	Type Institutions Formed (Federations/Cooperative)	Specific objectives/activities
Mugu	Cooperative: One cooperative has been registered in Shrawan 2064, in Joint efforts of 11 COs members of three VDCs, namely Shreenagar, Karkiwada, Pina	To provide agro-vet services to its members To establish hatchery and make available chicks in district for its members To run dairy at district headquarter collecting milk from its members.
Siraha	Federation 6 COs in Bishnupurkalti VDC has been federated to run a chilling Center  COs in Dhodhana and Bhadaiya VDCs  Cooperative 3Cos in Muskar VDC is in process to register cooperative.	To establish & run Chilling Center for marketing of milk products from its member  To run Breeding Center  To run saving credit and provide technical services to its members
Kapilvastu	Cooperative: One cooperative has been registered in joint efforts of COs at Dhankauli and Rajpur VDCs.  Federation 357 buffalo raising farmers of five VDCs namely Ganeshpur, Biddhyanagar, Bhagamanpur, Sirshihawa and Ramnagar have been federated and formed. Shivam Dugdha Utpadak Community Organization	Multipurpose cooperative, it is in process to run agro-vet services and collection & marketing of milks from its members  Collection, Chilling and produce milk product as well as marketing. (Plant and Machinery of Chilling Center is under installation)  To run community insurance scheme for its members.

## Collaboration in sub-project Implementation at districts

The collaborative efforts are going on to supplement and complement with different program running in the district to bring discernible impact in considerably less time. There are several examples of collaboration with line agencies, local governments and donor agencies to implement the program and sub-projects in the communities at district level. Some of the collaboration efforts are shown in the table provided in Annex-IX.

Several MoU has also been signed with different organizations at central level to facilitate different task as well as to facilitate collaboration in implementation of sub-projects at community level.

- MoU with Rastriya Banijya Bank (RBB), as a PAF development partner, is renewed and made arrangements with Nepal Bank Limited in 5 districts (Dolpa, Jajarkot, Rasuwa, Rolpa and Rukum) where RBB branch do not exists for enabling efficient fund flow to the accounts of community organizations of the poor.
- MoU is signed between South Asia Foundation, CTEVT and Dhulikhel Hospital in order to utilize Madanjeet Singh Scholarship for ANM in PAF pilot districts
- MoU is signed with Alternate Energy Promotion Centre (AEPC) on August 10, 2007 for mutual collaboration in PAF and AEPC program area to enable poor access to micro-hydro and other alternative energy projects
- MoU is signed with WINROCK on October 27, 2007 for the implementation of ICT GDA project in Bajhang and Achham districts.
- MoU is signed with ROTARY Club and Kavre Health Training Institute for utilizing ROTARY ANM Scholarship and follow-up support program in PAF districts.
- MoU is signed with Winrock International's (WI) Renewable Energy Project Support Office (REPSO) Nepal on April 21, 2008 to promote Jatropha oil based pump irrigation systems for improving income generation of poor farmers through increased agricultural productivity in Siraha district.
- MoU is signed between Department of National Parks and Wildlife Conservation (DNPWC) and PAF on May 2, 2008 in order to collaborate and enable to implement PAF program in protected areas.

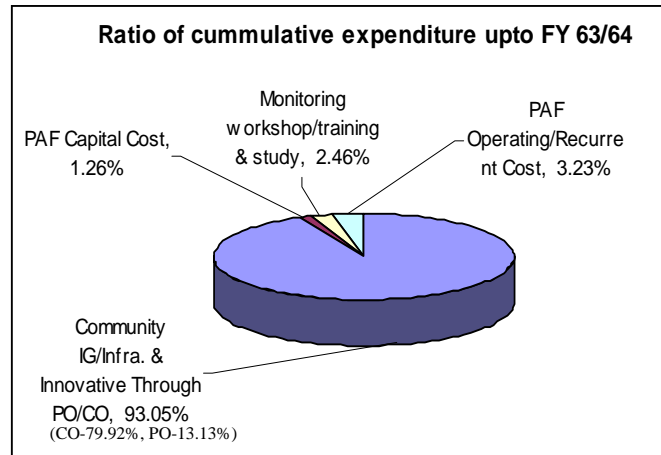
Recently an understanding is signed by PAF in a meeting at Ministry of Finance with Ministry of Local Development (MLD) to further enhance co-ordination with Local Bodies at district on April 1, 2008.

Further PAF is taking initiative to collaborate with Ministry of Education and Centre for Non-Formal Education; Department of Livestock and Department of Agriculture under the Ministry of Agriculture and Co-operatives. Similarly effort is going on to collaborate with Department of Irrigation; Leasehold Forestry and Livestock Programme-Department of Forest; World Food Program (WFP); and USAID project Education for Income Generation.

## Budget Expenditure

The total expenditure in FY 2060/61 (2003-04), FY 2061/62 (2004-05), FY 2062/63 (2005-06) and FY 2063/64 (2006-07) were NRs.5,781,379, NRs. 247,322,606, NRs. 493,505,927 and NRs 1,210,296,385 respectively. Last FY 2063/64 (2006-07), the expenditure is NRs 1,210,296,385 which is 96.51% of total budget of NRs 1,254,070,000.00. Total expenditure of PAF till FY 2063/64 is NRs. 1,956,906,297.

Out of the total PAF expenditure of NRs. 1,956,906,297 till FY 2063/64 (2006-07), 93.05% was in Program Implementation through CO & PO (CO 79.92% and PO 13.13%), 2.46% in Monitoring, Training, Studies and Other Program Support, 1.26% in capital investment for PAF and 3.23% in PAF operation/ recurrent cost. Of the total expenditure 94.6% was from the World Bank IDA Grant and rest 5.4% from GoN source.



In this FY 2064/65 (2007-08), the expenditure till date is NRs 1,352,563,333.35 which is 76.38 % of total budget of NRs 1,770,723,000.

Currently the PAF Project is funded by IDA Grant with US\$ 40.0 M for four years till January 2009. This constitutes initial US\$ 15.0 M and additional US\$ 25.0 M. IDA disbursement to this PAF project till date is 75% i.e. equivalent to about US\$ 31.51M (equivalent to about \$ 14.67 M out of initial \$ 15 M and equivalent to about \$ 16.84 M out of US\$ 25 M).

IDA grant for PAF Project II of US\$ 100.0 M has been made effective on January 31, 2008. Likewise, IFAD grant for PAF II of US\$ 4 M is in Pipeline.

## Lessons and Challenges

There is a high demand for the programme as the sub-projects originate at grass-root levels. Communities have demonstrated their keen interest to undertake the programme and make necessary contributions. The current challenge is to make a trade-off between rapid implementation and institution building enhancing the technical capability of the community organizations. In view of the wide varieties of activities undertaken within the sub-project, the challenges faced for sustainability of the sub-projects are:

- Linkage with market for sustaining income-generating activities.
- Providing appropriate technology support for different activities including linkages with existing service structure
- Availing Insurance Safety-Net particularly for livestock
- Exploring an alternative to livestock based activities for landless poor
- Building Community Capacity to Manage Revolving Fund and Operate the Sub-Projects
- Raise awareness of community through functional literacy

While working towards above challenges, it is inevitable to work with diversified groups of poor communities supporting each other and network for linkages and collaboration with other programmes and line agencies to support communities in different areas of strength of these programmes. Further, legal institutionalization of Community Organizations through coalition or formation of functional co-operatives and establishment of strong linkages with VDC/ DDC are also important for sustainability and long-term support to these community groups.

PAF is working with its exit strategy focusing on its strategic thrust to enable community to go to sustained path to get out of poverty within a stipulated 5-6 years of time.

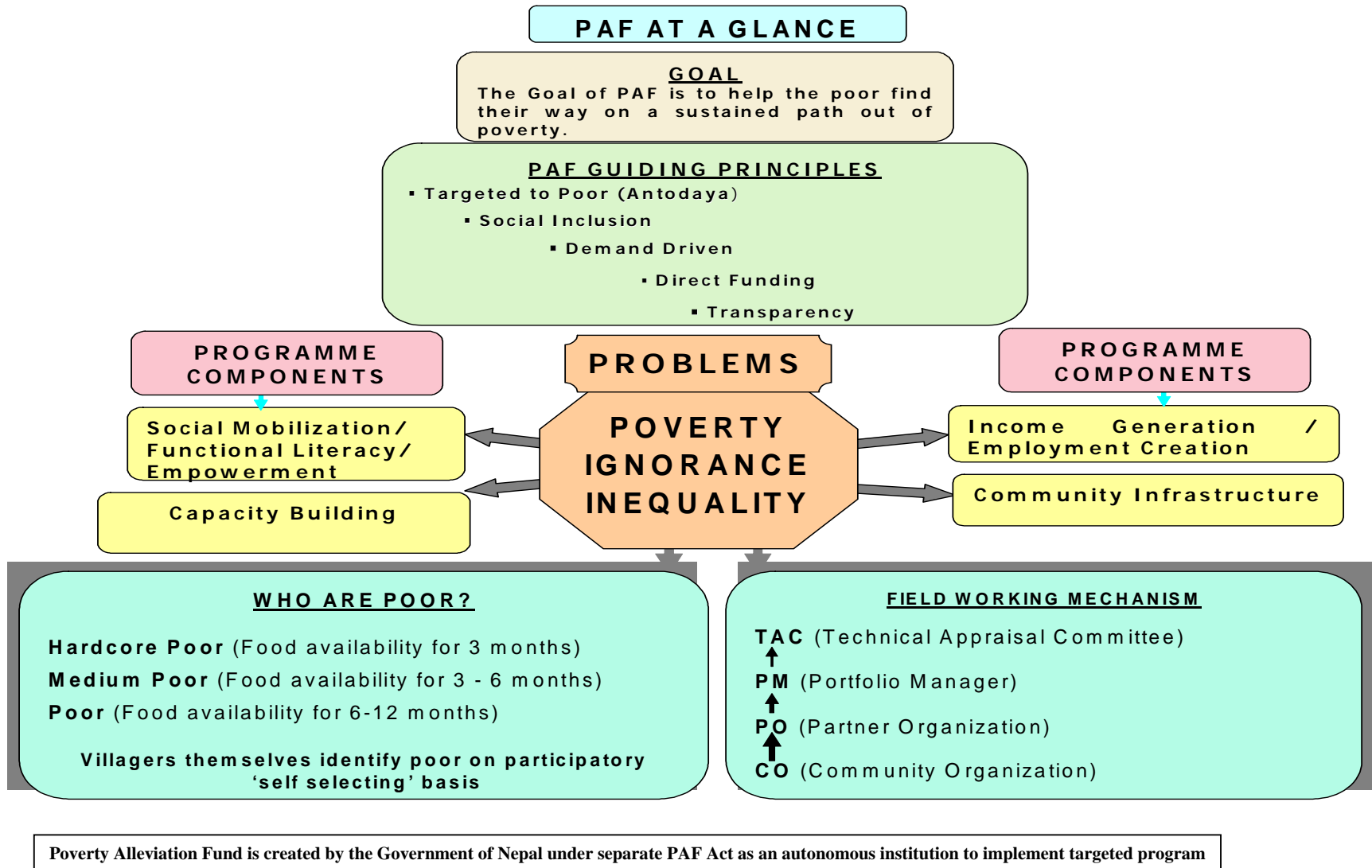
Monitoring, Research and Development needs to be strengthened further to support the implementation including capacity building of main actors i.e. CO, PO, Local Bodies and PAF.

## **Future Program District Coverage Plan**

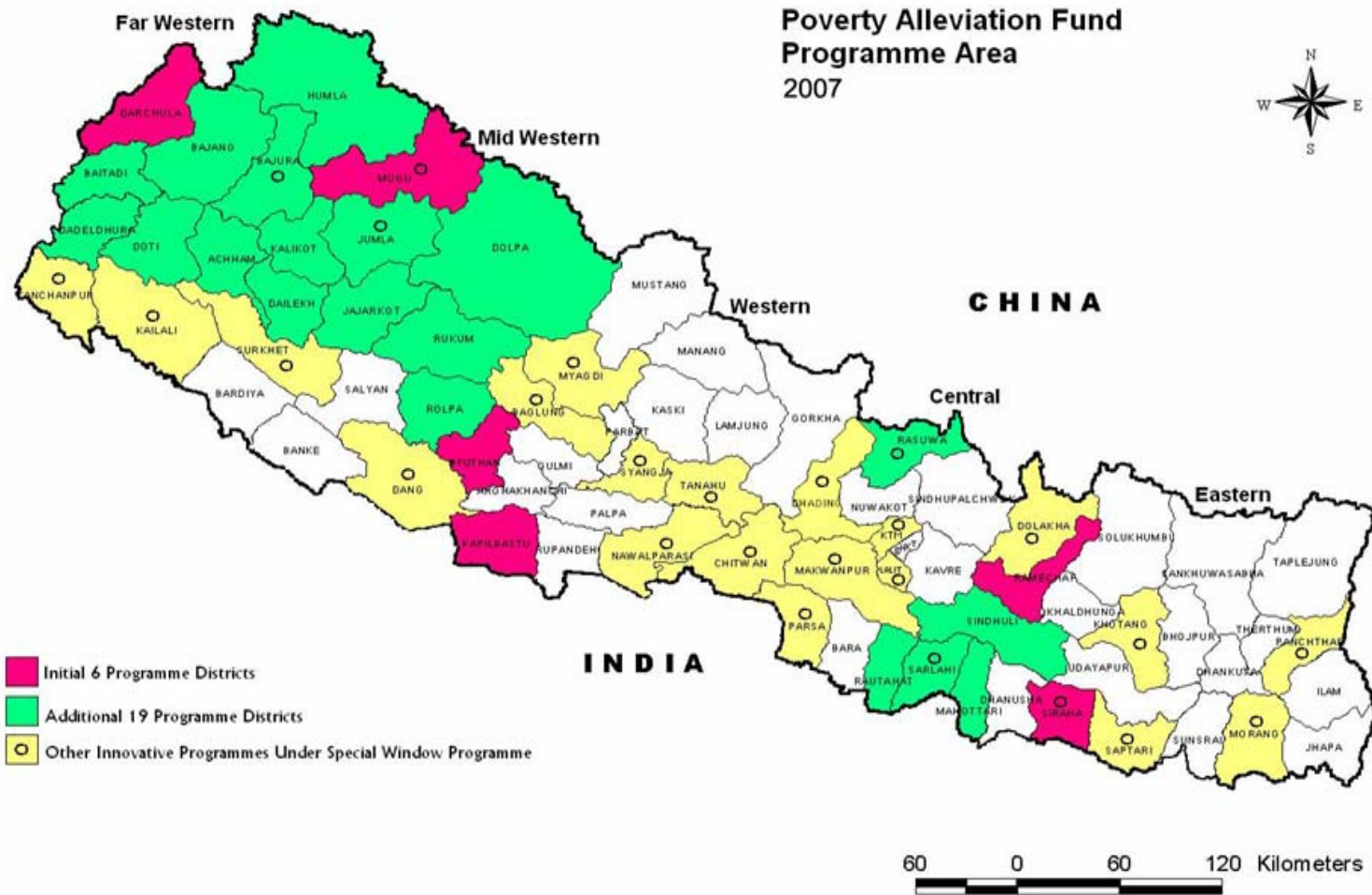
PAF has planned to cover all 75 districts in future. Program expansion in additional 15 districts is initiated in the Fiscal Year 2064/65 (2007/08) and identification of Partner Organization (POs) is ongoing. Program will be expanded in additional 15 districts in FY 2065/66 (2008/09) from the list of deprived districts categorized by CBS/NPC based on 28 poverty related socio-economic indicators (Annex-X). Remaining 20 districts will be covered through poverty pocket approach. The phasewise PAF program district coverage plan are shown in the map in Annex-XI.



# Annex I: PAF Program at a Glance



## Annex II: PAF Programme Districts



## Annex III: Sub Project Activities

### Agriculture & Others

- Agro Forestry
- Apple Farming
- Asparagus Farming
- Badam Farming
- Banana Farming
- Bee Keeping
- Boring Pump
- Cereal Crops Farming
- Cloth Udhog
- Dairy Firm
- Dhaki Okhal
- Dhikki Pump
- Fertilizer Production
- Fishery
- Fruit Purify Center
- Fruits Farming
- Ginger Farming
- Green House
- Herbal Nursery
- Herbs Farming
- Juice Production
- Lokta Farming
- Maize Cultivation
- Milk Chilling Center
- Mushroom Farming
- Nursery
- Off Season Veg. Farming
- Power Treller (Tractor)
- Rice Cultivation
- Seeds Business
- Spray Machine
- Sugarcane
- Tree Contract
- Vegetable Farming

### Total of Agriculture & Animal Husbandary

#### Activity

- Animal Insurance
- Animal Treatment Fund
- Badel Raising
- Buffalo Raising
- Chicken Cage Construction
- Cow Raising
- Donkey Raising
- Duck Raising
- Fooder
- Goat Raising
- He Bufallo Raising
- Horse Raising
- Muel Raising
- Ox Raising
- Pari Raising
- Pasture Land
- Pig Raising
- Pigeon Keeping
- Poultry
- Rabbit Keeping
- Sheep Raising
- Yak Raising

### Total of Animal Capacity Building

#### Activity

- Aamchi Training
- Account And Store Mgt
- Account Keeping Training
- Agro Forestry Training

- Agrovet Training
- Animal And Market Dev
- Animal Health Training
- Animal Health Worker Training
- Animal Husbandary Training
- Animal Insurance Training
- Animal Raising Training
- Asparagus Managemet
- Asparagus Marketing Training
- Awareness Training
- Banana Farming Training
- Beauty Parlor Training
- Bee Keeping Training
- Buffalo Raising Training
- Candle Making Training
- Carpentry Training
- Carpet Making Training
- Cemented Ring Making
- Child Development
- Child Literacy Class
- CO Management Training
- Commuity Awareness Training
- Communication Training
- Compost Fertilizer
- Computer Maintenance
- Computer Training
- Cottage Industry Training
- Cow Raising Training
- Cycle Maintenance Training
- Dairy Technician Training
- Dalmoth Making Training
- Diseases Prevention Training
- Driving Training
- Editing Training
- Electronics Training
- Environment Conservation &
- Fertilizer Prodn Training
- First Aid Training
- Fish Business Training
- Fishery Training
- Forest Management Taining
- Fruits Farming Training
- Fruits Purify & Mgmt. Training
- Furniture Training
- Gender Equality & Dev. Trg
- Ghatta Mgmt. Training
- Ginger Cultivation Training
- Goat Raising Training
- Goldsmith Training
- Group Mgmt. And Leadership
- Health And Sanitation
- Herbal Nursery Management
- Horse Raising Training
- Hotel Mgmt. Training
- House Wiring Training
- Improved Stove Training
- JTA Training
- Kitchen Grdening Training
- Leadership Training
- Literacy Class
- Market Management Training
- Masson Training
- Mechanical Training
- Medical Mgmt. Training
- Metal Tools Making Training
- Metal Work Training
- Micro Enterprise Training
- Milk Business Training
- Misc. Capacity Building
- Nanglo Making Training
- Noodles Making Training
- Nursery Management
- Off Season Veg Farming

- Organisation Management
- Painting Training
- Pasture Land Mgt. Training
- Photographer Training
- Pig Raising Training
- Pickle Making Training
- Plantation Training
- Plumber Training
- Pond Maintenance Training
- Poultry Training
- Power Troller Mgmt. Training
- Project Management Training
- Pump Operation Training
- Rabbit Keeping Training
- Radio TV Maintenance Training
- Radipakhi Bunai Training
- Repair And Maintenance
- Retail Business Training
- Rikshwa Maintenance
- Saloon Training
- Saving & Credit Mgmt. Trg.
- Seed Development Training
- Sewing Cutting Training
- Sheep Raising Training
- Shoe Making Training
- Skill Development Training
- Soap Making Training
- Solar Maintenance &
- Stamp Making Training
- Study Tour
- Sudeni Training
- Tailoring Training
- Tap Maintenance Training
- Tapari Training
- Toilet Construction Training
- Vegetable Farming Training
- Vegetable Storage Training
- Vehicle Maintenance Training
- Vetnery Training
- Water Supply Maintenance
- Women Health Training
- Women Skill Development
- Wood Craft Training

#### **Infrastructure-IG**

- Canal
- Community Building
- Culvert
- Culvert And Dam
- Deep Boring
- Duck, Pegin, Chicken
- Ghatta
- Irrigation
- Irrigation Rehabilitation
- Motor
- Plastic Pond
- Pond
- Pond Maintenance
- Pump Set
- Rice Mill
- Road
- Road And Culvert
- Solar System
- Strecher
- Water Harvest Tank
- Water Pump
- Well
- Wooden Bridge

#### **Infrastructure-Social**

- Bridge Construction
- Building Construction
- Drain

- Dumping Site
- Electricity
- Fensing
- Hand Pump
- Hume Pipe
- Micro Hydro
- Micro Irrigation
- River Training Work
- Road And Well
- Road Gravel And Hume Pipe
- Road Maintenance
- School Boundary Wall
- School Building/Room
- School Maintenance
- Suspension Bridge
- Toilet
- Tube Well
- Water Intake Repair
- Water Supply And Micro Irrigation
- Water Supply And Sanitation
- Water Supply Maintenance
- Water Supply/Drinking Water
- Wire Bridge

#### **Manufacturing & Others**

- Agri Tools
- Bag
- Bread Udyog
- Candle Udhoyog
- Carpentry
- Carpet
- Chiura Udyog
- Clay Utensils
- Cottage Industry
- Dalmoth Udhoyag
- Doko Namlo Rope
- Essence
- Farma
- Fiber Material Making
- Furniture Business
- Garment
- Improved Stove Making
- Madal Making
- Metal Products Production
- Muda
- Nanglo
- Pickle Udhoyog
- Potato Chips
- Pottery (Manufacture)
- Rope Making
- Shoe Making
- Sweater Udyog
- Sweet Shop
- Tapari
- Thanka
- Titaura
- Tyle Industry
- Umbrella Udyog

#### **Service Sector**

- Agrovot
- Auto Rickshaw
- Band Baaja
- Bicycle And Motorcycle
- Bus Truck Maintenance
- Cart Service
- Communication Service
- Computer Maintenance
- Cycle Maintenance
- Dhalan Pharma
- Goods Transportation
- Help To Disable People
- Hotel
- Improved Aran

- Laundry
- Loud Speaker
- Masson Instruments
- Mechanical Workshop
- Mill (Kutani Pisani)
- Motorcycle Maintenance
- Painting
- PCO
- Photo Studio
- Plumber Instruments
- Radio TV Maintenance
- Resturant
- Rikshwa
- Rikshwa Maintenance
- Saloon
- Screen Print
- Sewing Machine
- Sheltering Business
- Solar Repairing &
- Tailoring
- Tea Shop
- Tent House
- Thela Gada
- Transportation Service
- Vehical Maintenance
- Washing Machine
- Welding Shop

#### **Social Service**

- Birth Certificate And
- First Aid Instruments
- Health And Sanitation
- Health Post
- Improved Stove
- Scholarship
- School Furniture
- Tripal

#### **Trading**

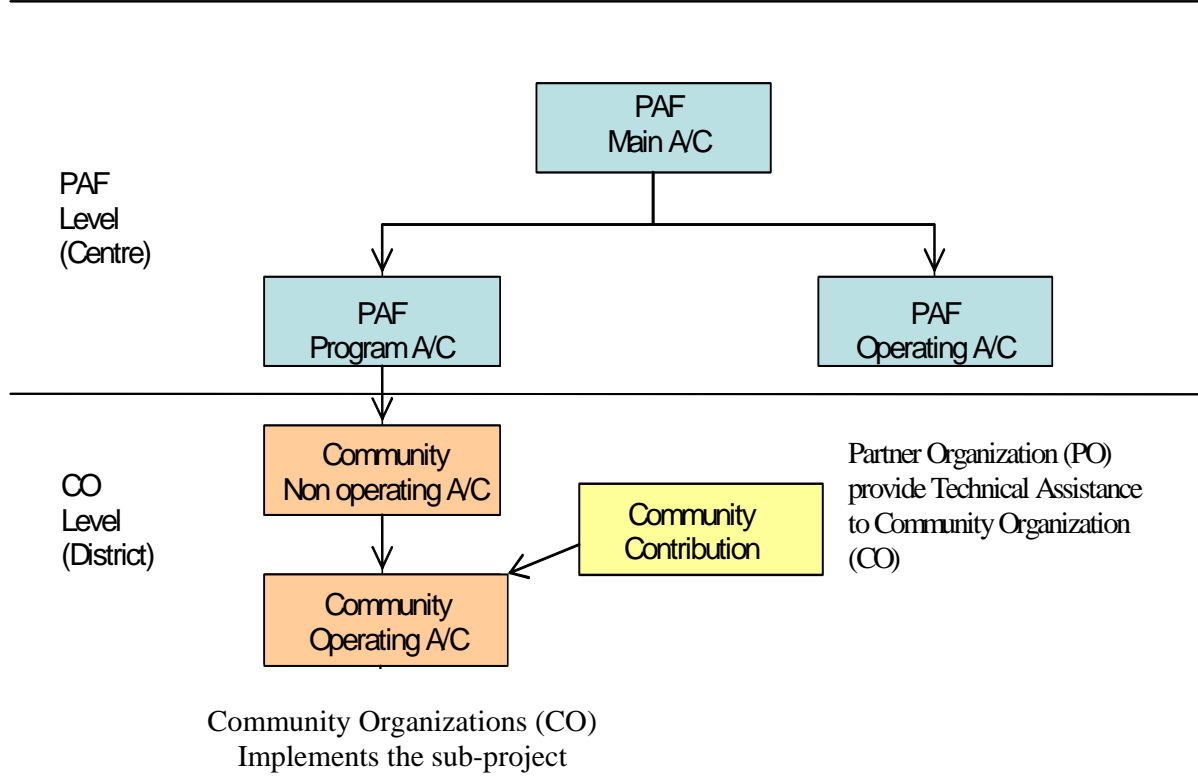
- Aggregate
- Agricultural Input Business
- Animal Business
- Bamboo Business
- Beauty Parlor
- Bhujiya Shop
- Book Shop
- Chuna Business
- Cloth Business
- Cooperative Shop
- Dhaka Bunai
- Dry Fish Business
- Egg Business
- Electric Shop
- Fancy Shop
- Fish Business
- Fruits And Vegetable Shop
- Fruits Shop
- Galla
- General Stores
- Gold & Silver Shop
- Herbs Business
- House Wiring
- Ice Crea, Kulfi, Chaat

- Jewelry Shop
- Kawadi Business
- Kerosene Shop
- Leather Business
- Lohari Giri
- Manihara Business
- Masala Udyog
- Meat Shop
- Medicine Shop
- Metal Business
- Micro Enterprise
- Milk Business
- Mobile Retail Shop
- Nepali Paper Udyog
- Noodles Business
- Paan Shop
- Plastic Shop
- Pottery Shop
- Purse, Belt Shop
- Radipakhi Bunai
- Retail Business
- Rice Business
- Shoe Shop
- Soap Industry
- Stamp Making Shop
- Stationary
- Thela Business
- Tobacco Business
- Utensial Shop
- Vegetable Shop
- Vetnary Shop
- Watch Shop
- Wood Business

#### ***INNOVATIVE ACTIVITIES***

- Water supply cum Micro-irrigation and integrated agriculture in hills
- Improved Wire Bridge (Tar Pool)
- Support poor for inclusion in micro-hydro project through IG
- Support community effort to complete irrigation project for vegetable farming
- Micro-financing and subsidy scheme for Arsenic Filters to the community
- Pigeon keeping
- Fish cultivation in lake and rice fields
- Rice intensification
- Cardamom cultivation in community forest
- Briquette Production
- Integrated Approach in agro based IG
- Orange and Coffee production and marketing management
- Healthy women for sustainable development
- Introducing Wi-Fi Technology in rural areas
- Evaporative cooling technology for food preservation

# Annex IV: Funds Flow Modality



## Annex V: CO registration, agreement for sub-project and disbursement status

District	CO Registered w/ PAF (No.)	Agreement			Disbursement			
		With CO	No.	Amount (NRs.)	Non Operating		Operating	
					Sub Project No.	Amount (NRs.)	Sub Project No.	Amount (NRs.)
<b>Initial 6 Districts</b>								
Darchula	550	533	625	215,315,400.81	506	169,172,817.50	490	147,293,378.68
Kapilbastu	601	600	610	303,572,281.02	942	286,329,141.02	838	209,985,288.19
Mugu	163	151	202	72,510,093.00	215	69,085,568.00	211	59,715,553.50
Pyuthan	433	431	465	187,365,803.00	315	111,714,338.67	291	85,122,184.16
Ramechhap	545	511	542	192,730,050.39	472	155,638,732.39	467	128,635,378.86
Siraha	767	706	716	277,539,908.09	871	244,279,064.85	765	188,320,758.69
<b>6 Dist. Tot</b>	<b>3,059</b>	<b>2,932</b>	<b>3160</b>	<b>1,249,033,536</b>	<b>3321</b>	<b>1,036,219,662.43</b>	<b>3062</b>	<b>819,072,542.08</b>
<b>19 Additional Districts</b>								
Achham	268	266	287	117,036,751.00	245	92,314,988.00	244	61,457,131.60
Baitadi	462	235	274	122,514,673.14	200	90,373,782.80	196	79,797,447.01
Bajhang	123	119	150	50,807,844.35	149	50,807,844.35	148	44,973,967.00
Bajura	134	134	160	79,615,234.86	141	71,090,098.86	138	60,433,062.59
Dadeldhura	222	215	216	94,146,715.99	215	75,068,385.99	134	47,754,036.00
Dailekh	192	192	193	93,094,567.00	137	56,363,077.00	137	49,334,834.20
Dolpa	119	119	119	57,048,364.00	117	55,905,427.60	117	47,188,277.00
Doti	256	239	242	107,431,699.00	192	83,387,102.00	186	69,844,433.00
Humla	259	253	271	109,974,712.00	197	73,686,885.00	197	61,387,287.20
Jajarkot	226	205	228	149,285,514.57	170	92,328,148.65	109	44,383,719.35
Jumla	222	221	232	154,903,898.00	276	141,660,611.00	217	71,371,768.00
Kalikot	209	208	208	93,994,221.00	104	47,580,539.00	103	28,012,982.40
Mahottari	342	318	320	117,521,021.00	283	97,930,936.00	276	65,970,192.40
Rasuwa	217	204	214	85,999,678.97	184	69,594,687.80	173	62,313,572.30
Rautahat	337	296	304	162,768,619.90	290	150,860,346.75	290	131,716,906.75
Rolpa	20	20	20	11,535,250.00	20	11,535,250.00	20	8,026,710.00
Rukum	199	104	105	40,616,196.50	70	27,183,039.00	69	22,749,672.00
Sarlahi	364	363	364	135,933,013.00	186	65,239,531.20	180	54,062,207.21
Sindhuli	355	355	397	188,419,239.02	331	151,001,688.26	314	117,683,888.68
<b>19 Dist. Tot</b>	<b>4,526</b>	<b>4,066</b>	<b>4304</b>	<b>1,972,647,213</b>	<b>3507</b>	<b>1,503,912,369.26</b>	<b>3248</b>	<b>1,128,462,094.69</b>
<b>25 Dist. Tot</b>	<b>7,585</b>	<b>6,998</b>	<b>7464</b>	<b>3,221,680,750</b>	<b>6828</b>	<b>2,540,132,031.69</b>	<b>6310</b>	<b>1,947,534,636.77</b>
<b>Innovative Programme Districts</b>								
Baglung	1	1	1	722,165.00	1	722,165.00	1	361,000.00
Chitawan	17	17	21	5,790,434.00	21	5,790,434.00	16	4,048,820.00
Dhading	56	56	66	24,708,062.00	66	25,027,212.00	66	18,892,479.60
Kanchanpur	80	79	79	25,626,092.00	79	25,626,092.00	76	21,284,426.00
Kavrepalan	1	1	1	1,735,037.00	1	1,735,037.00	1	1,561,533.00
Lalitpur	2	2	2	6,784,220.00	2	6,784,220.00	2	6,105,798.00
Makwanpur	52	41	41	10,692,876.52	41	10,232,016.52	41	8,242,584.02
Morang	61	61	61	32,087,754.87	61	32,087,754.87	61	32,087,754.47
Nawalparasi	1	1	1	1,551,248.00	1	1,551,248.00	1	1,551,248.00
Surkhet	1	1	1	3,015,982.00	1	3,015,982.00	1	2,020,708.00
<b>Innovative Total</b>	<b>272</b>	<b>260</b>	<b>274</b>	<b>112,713,871.4</b>	<b>274</b>	<b>112,572,161.39</b>	<b>266</b>	<b>96,156,351.09</b>
<b>Total =</b>	<b>7,857</b>	<b>7,258</b>	<b>7738</b>	<b>3,334,394,621</b>	<b>7102</b>	<b>2,652,704,193.08</b>	<b>6576</b>	<b>2,043,690,987.86</b>

## Annex VI: Completed Sub Projects (1)

<u>Income Genetation</u>		<u>Infrastructure</u>		<b>2,876</b>
Achham	49	<b>Registered As</b>	Special	
Baitadi	145	Achham		5
Bajhang	3	Bajura		9
Bajura	45	Humla		17
Dadeldhura	132	Jumla		12
Dailekh	85	Rasuwa		6
Dolpa	72	Sindhuli		2
Doti	117			<b>51</b>
Humla	159	<b>Registered As</b>	Regular	
Jumla	22	Darchula		82
Mahottari	52	Kapilbastu		247
Rasuwa	147	Mugu		49
Rautahat	207	Pyuthan		5
Rolpa	7	Ramechhap		17
Rukum	66	Siraha		177
Sarlahi	21			<b>577</b>
Sindhuli	224	<b>Registered As</b>	Innovative	
	<b>1,553</b>	Chitawan		4
<b>Registered As</b>	Regular	Dhading		8
Darchula	202	Makwanpur		12
Kapilbastu	284	Morang		45
Mugu	78	Nawalparasi		1
Pyuthan	95	<b>Infrastructure Total</b>		<b>698</b>
Ramechhap	212	<b>Total</b>		<b><u>3,574</u></b>
Siraha	338			
	<b>1,209</b>			
<b>Registered As</b>	Innovative			
Chitawan	11			
Dhading	29			
Kanchanpur	13			
Morang	61			
	<b>114</b>			
<b>Income Generation Total</b>	<b>2,876</b>			

### No of Completed Infrastructures by Types

<b>Infrastructure-IG</b>		Building	54
Boring Pump	23	Culvert	26
Dhikki Pump	41	Drainage	3
Ghatta	30	Dumping Site	56
Infrastructure Design-IG	2	Electricity Line	11
Irrigation	1280	Hume Pipe	2
Plastic Pond	1	Infrastructure Design-Social	15
Pond	2	Micro Hydro	12
Pond Maintenance	2	School Maintenance	6
Pump Set/Motor	29	Solar System	193
Rice Mill	5	Toilet	1475
Road	29	Water Supply	907
Water Pump	20	Water Supply Maintenance	1
<b>Total of Infrastructure-IG</b>	<b>1464</b>	<b>Total of Infrastructure-Social</b>	<b>2767</b>



## Annex VI: Sub-Project Physical Achievement (2)

SN	Activities	No. of HH
<b>A</b>	<b>Income Generating Activities</b>	<b>201,499</b>
	Agriculture & Others	19960
	Livestock	141747
	Manufacturing & Others	6105
	Service Sector	6570
	Social Service	5086
	Trading	22031
<b>B</b>	<b>Infrastructure</b>	<b>67,808</b>
<b>i</b>	<b>Infrastructure-IG</b>	<b>28,016</b>
	Boring Pump	386
	Canal	97
	Dhikki Pump	645
	Ghatta	709
	Infrastructure Design-IG	39
	Irrigation	7908
	Irrigation Rehabilitation	166
	Milk Chilling Centre	357
	Plastic Pond	107
	Pond	85
	Pond Maintenance	169
	Pump Set/Motor	255
	Rice Mill	28
	Road	16773
	Road Maintenance	223
	Water Pump	69
<b>ii</b>	<b>Infrastructure-Social</b>	<b>39,792</b>
	Bridge	3416
	Building	7359
	Culvert	6816
	Dumping Site	107
	Electricity Line	2210
	Fencing	23
	Hume Pipe	232
	Infrastructure Design-Social	424
	Micro Hydro	3346
	River Training	104
	School Boundary Wall	202
	School Maintenance	404
	Solar System	657
	Toilet	3425
	Water Supply	10612
	Water Supply Maintenance	455
	<b>Capacity Building</b>	<b>175,459</b>

## Annex-VII: POs, COs and Coverage

District	No. of Working Pos	Total VDC + Municipality in District	PO Committed No. of VDC	CO Working VDC	Sub Proj. No.		Beneficiary	
					IG	Infra	CO Member	Total Beneficiary
<b>Initial 6 Districts</b>								
Darchula	10	41	41	41	452	181	13,739	18,245
Kapilbastu	11	78	59	49	598	384	16,897	26,350
Mugu	6	24	21	22	131	87	6,627	9,032
Pyuthan	12	49	37	38	420	54	13,577	14,095
Ramechhap	11	55	48	41	503	74	13,436	15,055
Siraha	18	108	72	54	688	246	17,469	20,276
<b>6 Dist. Tot</b>	<b>68</b>	<b>355</b>	<b>278</b>	<b>245</b>	<b>2,792</b>	<b>1,026</b>	<b>81,745</b>	<b>103,053</b>
<b>19 Additional Districts</b>								
Achham	8	75	35	27	270	18	8,495	11,431
Baitadi	7	63	30	31	218	56	9,809	9,906
Bajhang	3	47	18	18	96	55	3,602	4,752
Bajura	4	27	20	20	134	26	5,119	6,196
Dadeldhura	9	21	18	16	215	1	6,394	6,275
Dailekh	5	56	25	25	193		7,345	7,345
Dolpa	3	23	12	12	119		3,714	3,712
Doti	5	51	26	21	239	3	7,818	7,901
Humla	5	27	22	22	253	18	6,490	6,526
Jajarkot	8	30	26	26	221	7	8,525	17,271
Jumla	7	30	21	20	220	75	8,894	8,954
Kalikot	6	30	22	22	208		6,619	6,589
Mahottari	12	77	23	22	320		8,268	7,934
Rasuwa	7	18	15	15	206	9	6,181	6,513
Rautahat	9	97	44	28	290	14	8,497	11,828
Rolpa	1	51	4	4	20		732	732
Rukum	3	43	12	12	105		3,150	3,171
Sarlahi	17	100	40	37	364		10,697	10,589
Sindhuli	10	54	32	24	350	47	12,928	15,570
<b>19 Dist. Tot</b>	<b>129</b>	<b>920</b>	<b>445</b>	<b>402</b>	<b>4,041</b>	<b>329</b>	<b>133,277</b>	<b>153,195</b>
<b>25 Dist. Tot</b>	<b>197</b>	<b>1,275</b>	<b>723</b>	<b>647</b>	<b>6,833</b>	<b>1,355</b>	<b>215,022</b>	<b>256,248</b>
<b>Innovative Programme Districts</b>								
Baglung	0	60	0	1		1	13	142
Chitawan	1	38	5	5	17	4	534	531
Dhading	1	50	6	5	57	9	1,919	1,980
Kanchanpur	1	20	20	8	79		1,893	1,956
Kavrepalanchok	1	90	1	1	1	1	11	125
Lalitpur	2	42	4	2		2	416	516
Makwanpur	2	44	18	14	29	12	1,038	1,068
Morang	3	65	4	3	61	45	2,301	2,310
Nawalparasi	0	74	0	1		1	11	705
Surkhet	0	48	0	1		1	9	655
Siraha	1		2					
<b>Innovative Total</b>	<b>12</b>	<b>531</b>	<b>60</b>	<b>41</b>	<b>244</b>	<b>76</b>	<b>8,145</b>	<b>9,988</b>
<b>NDM</b>	<b>12</b>		<b>25</b>					
<b>Total =</b>	<b>221</b>	<b>1,806</b>	<b>808</b>	<b>688</b>	<b>7,077</b>	<b>1,431</b>	<b>223,167</b>	<b>266,236</b>

Note: 11 POs worked in 25 districts were dropped due to poor performance and inability to work.

## Annex VIII: Social Inclusion Strategy Reaching the Poor

<u>Targeting Sequence</u>	<u>Key Actor</u>	<u>Tools/Methods</u>
<b>Districts</b>	PAF Management	District Level Indicators (CBS/NPC)
↓		
<b>VDCs</b>	PAF Management Portfolio Manager	VDC Prioritization DDC-Level Stakeholders' Consultation
↓		
<b>Wards</b>	Partner Organization (PO)	VDC-Level Interaction
↓		
<b>Settlements</b>	Partner Organization (PO) Community	Ward-Level Interaction Settlement-Level Sensitization Settlement Social Mapping Social Assessment/ Wellbeing Ranking
↓		
<b>Community</b>	Community Community Org. (CO)	Identification of Target Households Formation of COs Registration of COs
↓		
<b>Target Beneficiaries</b>	Community Org. (CO)	Project Development Link with District DDC plan Community Action Planning

## Annex IX: Collaboration at Districts

District	Collaborating with	Jointly Supported Activities/ Sub projects	
Kapilvasatu	District Education Office (DEO)	School Building at Dharampaniya VDC	
	DDC	Wooden Bridge at Maharajanj VDC	
	UNICEF	Construction of rooms for Child Class at Niglehawa VDC	
	VDCS	Almost all VDCs has contributed for road, culverts and bridge sub-projects	
	NEA	Rural electrification at Dharamganj VDC, Niglihawa VDC	
	BPC/APPSP	Lift Irrigation project at Dhakhaquadi VDC	
	BPC/ LFP	Lift Irrigation project at Ramdi VDC	
Pyuthan	BPC/VDC	Lift Irrigation project at Ramdi VDC	
	BPC/VDC	Lift Irrigation project at Gothibang VDC	
	REDP/DDC/VDC	Micro-hydro project at Rajawara VDC	
	VDC/ DDC	Link Road at Tusara VDC	
	VDC	Link Road at Majkot VDC	
	DEO	Bal Bikash Bhawan at Bijuwar	
	DFID/CSP, VDC	Tirpa Gad Micro-hydro at Rugha VDCs	
Mugu	DDC/RCIW, SNV	Brushu Sinchai - Kotdanda	
	DAO	Apple farming in Rugha VDCS	
	PCP/UNDP	Jhyari khola MHP- Pina	
	DFDP, DDC	Sera lekh Drinking Water Supply- Seri VDC	
	VDCs	In all infrastructures projects (water supply, micro-hydro, irrigation, buildings sub-projects VDCs has made cash contribution	
	Baitadi	REDP/UNDP, DDC, VDC	Patharkot MHP 17kw- Shikharpur
		REDP/UNDP, DDC, VDC	Irana Gad MHP 15 kw- Ganjari VDC
VDCs		Shrebhawar DWSS. Chaukham VDCs	
Siraha		SRI extension in PAF supported COs in all DADO program VDCs.	
	DAO, Siraha	Pilot project of Onion Farming in Bhabanipur VDC	
	NEA, VDCS	Electricity Extension for Irrigation in Phulkahakati, Padariya VDCs.	
	District Veterinary Office	Technical assistance to all PAF COs in Dhodna VDC	
	Dabour Nepal/ANSAB	Asparagus farming and marketing	
	WINROCK	Bio- Diesel demonstration	
DADO	Collaboration for all district agriculture programme		

District	Collaborating with	Jointly Supported Activities/ Sub projects
Darchula	DDC/ VDC	Drinking water supply project at Ranishikar, Eyarkut, Khandeshwori, Shankarapur, Lali VDC
	REDP	Micro-hydro project at Gokuleshowr VDC
	CARE	Micro-hydro project at Byans VDC
	VDC	School Building at Dhap, Gokuleshwar, Khar, Rithachupata VDC
Dadeldhura	REDP	Railgad MHP 15kw Kailpalmandu VDCs
Humla	AEPC, GEF, Nepal Trust and VDC	Syada MHP 26 kW- Syada
Bajhang	Winrock Nepal	Establishment of VSAT internet center, Hemantawada, Iyaya VDCs
Jumla	AEPC, VDCs	Microhydro -11kW at Talium VDC, Micro-hydra 22kW at Patarsi VDC
	District Agriculture Office/ Veterinary Office	Livestock and Agricultural Training
Rasuwa	District Agriculture Office	Japanese Trout Fish Farming at Gatlyang VDC
	DDC/VDC, German NRN	Phalagu Khola Bagatetar Irrigation at Laharepauwa VDC
Dhading	Room to Read, DDC, VDC	Construction of School Building at Pida VDC
Baglung	AEPC	Micro-hydro scheme 17 kW at Amarbhumi VDC
Achham	WINROCK	Information Center ( V- Sat) at Bailpata VDC
	DDC/ VDC/ REDP	Micro- Hydro project at Thandi & Kaskot VDC
Morang	Cottage & Small Industry Office	3 Month House Wearing Training for Community Members, Tankisunwari & Baujanathpur VDC
Bajura	DDC/VDC/REDP	Myco- Hydro at Kalli VDC
Jajarkot	AEPC	Myco- Hydro at Khalanga VDC
	VDC	Birendra Ma. Bi. school Building at Bhagawati VDC
Mahottari	Action Aid	Women Empowerment programme at Balawa & Sarpali VDC
Ramechhap	MEDP	Capacity building of CO at Ramechap, Sukajor, Funarpani & Manthali VDC
	District Veterinary Office	Vaccination and fodder plant distribution at Okhrenei VDC
	District Education Office	Informal Education programme at Ramapur VDC
	District Health Office	Support for Health Kid-box for different CO of Different VDC
Kavre	DDC/ VDC/ CIAM	Lift Drinking Water project at Jamdi VDC

## Annex X: Ranking of Districts based on Composite Index of 28 Socio-Economic Indicators)

Overall Composite Index

National Value: 0.47269

Group A		
District	Rank	Composite Index
Kathmandu	1	1.00000
Bhaktapur	2	0.94228
Lalitpur	3	0.87434
Chitawan	4	0.71278
Kaski	5	0.70404
Kavre	6	0.64372
Palpa	7	0.61285
Rupandehi	8	0.60565
Syangja	9	0.60197
Tanahu	10	0.58173
Jhapa	11	0.55714
Ilam	12	0.55623
Dhankuta	13	0.55584
Mustang	14	0.55201
Makwanpur	15	0.54841
Baglung	16	0.53291
Parbat	17	0.52436
Kanchanpur	18	0.52062
Sankhuwasabha	19	0.50255
Manang	20	0.49750
Kailali	21	0.49575
Dang	22	0.49242
Sunsari	23	0.49167
Banke	24	0.49080
Gorkha	25	0.48985

Group B		
District	Rank	Composite Index
Nuwakot	26	0.47767
Arghakanchi	27	0.46901
Lamjung	28	0.46694
Morang	29	0.46646
Nawalparasi	30	0.46289
Surkhet	31	0.46244
Bhojpur	32	0.45165
Gulmi	33	0.44916
Myagdi	34	0.44585
Dolakha	35	0.43765
Terhathum	36	0.43174
Dhanusa	37	0.41438
Bardiya	38	0.40130
Parsa	39	0.39876
Taplejung	40	0.38708
Dhading	41	0.38682
Panchthar	42	0.38532
Sindhupalchoke	43	0.37532
Solukhumbu	44	0.36443
Udayapur	45	0.36209
Saptari	46	0.35705
Salyan	47	0.35475
Khotang	48	0.35223
Bara	49	0.35200
Okhaldhunga	50	0.34404

Group C		
District	Rank	Composite Index
Sindhuli	51	0.34369
Sarlahi	52	0.33555
Rautahat	53	0.31535
Pyuthan	54	0.31502
Kapilbastu	55	0.31194
Ramechhap	56	0.30545
Baitadi	57	0.29367
Rukum	58	0.28686
Rasuwa	59	0.28023
Darchula	60	0.27206
Mahotari	61	0.26799
Jajarkot	62	0.26047
Doti	63	0.24781
Siraha	64	0.23094
Dadeldhura	65	0.22553
Rolpa	66	0.21651
Dailekh	67	0.21272
Jumla	68	0.20902
Kalikot	69	0.15247
Dolpa	70	0.13668
Bajura	71	0.11027
Achham	72	0.10632
Bajhang	73	0.05931
Humla	74	0.00414
Mugu	75	0.00000

Source: District Level Indicators of Nepal for Monitoring Overall Development (Based on Selected Socio-Economic Indicators), National Planning Commission Secretariat, Central Bureau of Statistics, 2003

# Annex XI: Phase wise PAF Programme District Coverage Plan

