

# **Poverty Alleviation Fund (PAF)**

## **Program Implementation Status**

**(as of 17 October 2007)**

Poverty Alleviation Fund (PAF) is implementing targeted demand-driven community based program directly supporting the third pillar of Tenth Plan/ Poverty Reduction Strategy Paper-PRSP of the Government of Nepal (GoN), i.e. targeted program (Annex-I: PAF program at a glance). Presently PAF is implementing its program in 45 districts. Initially it selected six districts viz. Darchula, Mugu, Pyuthan, Kapilbastu, Ramechhap and Siraha for programme implementation. From the FY 2062/63 (2005/06 AD), 19 additional districts are selected as PAF special programme districts (Achham, Baitadi, Bajhang, Bajura, Dadeldhura, Dailekh, Dolpa, Doti, Humla, Jajarkot, Jumla, Kalikot, Mahottari, Rasuwa, Rautahat, Rolpa, Rukum, Sarlahi and Sindhuli). With this, PAF now covers all the 25 districts from Group-C categorized as most deprived districts by CBS/NPC based on 28 poverty related social-economic indicators (Annex-IX). Besides working in these project districts, PAF is implementing innovative programme in other 20 districts as well under the special innovative window programme to capture replicable innovative initiatives to reach to the poor. The current PAF program districts are shown in Annex-II.

### **Demand-Driven Community Proposal and Direct Funding**

Till date 5,820 community organizations (COs) are registered in PAF (2,172 in Initial 6 Districts, 3,364 in Additional 19 Districts and rest 284 are through Innovative Window Programme Districts). Accordingly, community proposals are also prepared with participatory planning process. Out of total registrations, PAF made agreement with 5,323 COs (2,018 are in Initial 6 Districts, 3,024 in Additional 19 Districts and rest 281 in Innovative Window Programme Districts) and community are implementing the sub-project (The district wise details on CO registration and agreement are shown in *Annex-V*). Based on community demand, several different activities related to Income Generation and Infrastructure sub-projects are proposed and included in the program implementation. Income generation activities are related to agriculture, livestock, cottage industries, trade and services. Similarly, infrastructure are related to micro-irrigation, link road, culvert/bridges, micro-hydro, water supply, sanitation, school and health post buildings. Program activities, in general, being implemented by the community are listed in *Annex-III*.

The agreement made with 5,323 COs amounts to NRs. 2,319,909,601 and it is in the process of disbursement to Community Accounts. Till date NRs 1,999,889,195 is disbursed to community non-operating account and NRs 1,329,841,975 is disbursed to community operating account. The community fund flow modality is shown in Annex-IV and details on CO agreement and disbursement status is shown in Annex-V.

In FY 2061/62 (2004/05), the agreements were made with 595 COs amounting to NRs. 240,197,944, in the FY 2062/63 (2005/06), the agreement was made with 1,070 additional COs amounting to NRs 526,156,592, in FY 2063/64 (2006/07), the agreement is made with 3,311 additional COs amounting to Rs. 1,347,157,549 and in this FY 2064/65 (2007/08), the agreement is made with 347 additional COs amounting to Rs. 206,397,516 till date.

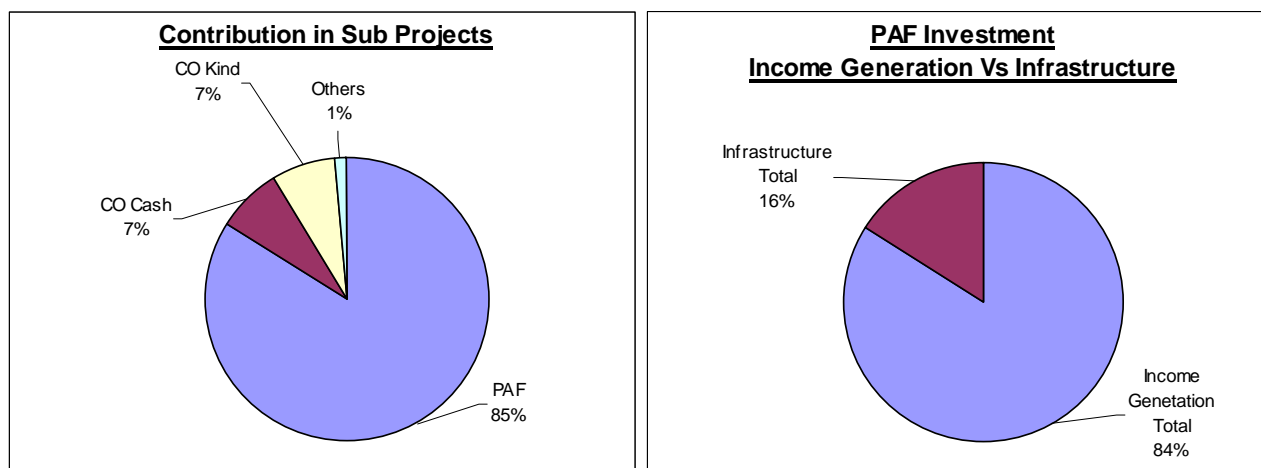
The community sub projects are in different stages of implementation. Second level of demand and proposals are also started receiving upon completion of first sub projects. A list of sub-projects completed and Physical achievements of sub-projects are provided in *Annex-VI*.

Additionally, PAF considered financing 12 out of 20 winning innovative proposals of Nepal Development Market Place (NDM)-World Bank. Agreements are made with those 12 POs that amounts NRs. 14,758,416 to work in 22 VDC of Bajura, Chitwan, Dolakha, Kailali, Kanchanpur, Kathmandu, Myagdi, Morang, Panchthar, Parsa, Saptari, and Syangja districts serving about 8,634 poor households. Till date, NRs. 14,298,492 is disbursed and implementation is in different stages.

Furhter PAF is monitoring the World Bank financed remaining 8 NDM projects in Dang, Khotang and Tanahun districts.

## Community Cost Sharing

PAF is investing 85% of the total sub-project cost. Community sharing is 14% (7% in Cash and 7% in Kind) of the total sub-project costs whereas other organizations mainly VDC/DDC are sharing 1% in total sub-project cost. In Income Generating sub projects, community is sharing 9% in cash and 3% in kind whereas in Infrastructure sub projects, it is 1% in cash and 25% in kind.



Out of the total PAF investment, 84% is in Income Generating sub-projects and 16% is in Infrastructure sub-projects. The sub-project activities undertaken are shown in Annex-III.

## Partner Organization Supporting Community

The objectives of PAF to select Partner Organizations (POs) are to facilitate Community Organisations (COs). The facilitation shall be in organising COs, their capacity development, planning activities, carryout detailed survey design & estimates, proposal submission, as well as technical assistance and monitoring during implementation. As such, 221 Partner Organizations (POs) are working with communities (71 for Initial 6 Districts, 126 for Additional 19 Districts, 12 for Innovative Window program and 12 for Innovative NDM-World Bank Programme). 6 Pos are dropped due to their poor performance. Till date POs facilitated in total 768 VDCs (268 in Initial 6 Districts, 414 in Additional 19- Districts, 64 in Innovative Window Programme Districts and 22 in NDM-World Bank Programmes) and Community Organizations (COs) are working in those VDCs. Till date 182,812 poor households in those VDCs are served. A detailed district wise PO, COs and coverage are shown in *Annex-VII*.

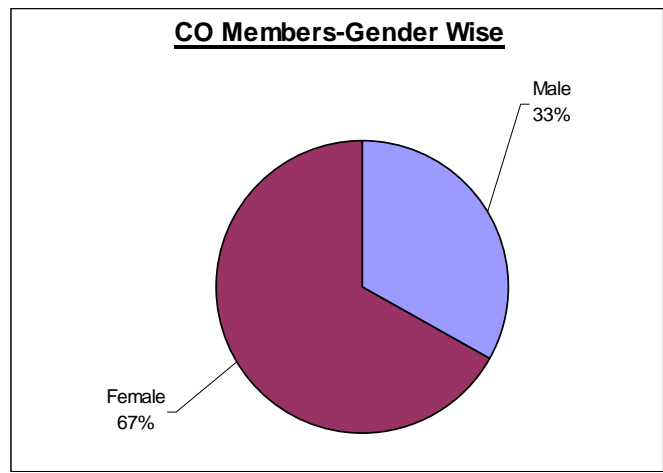
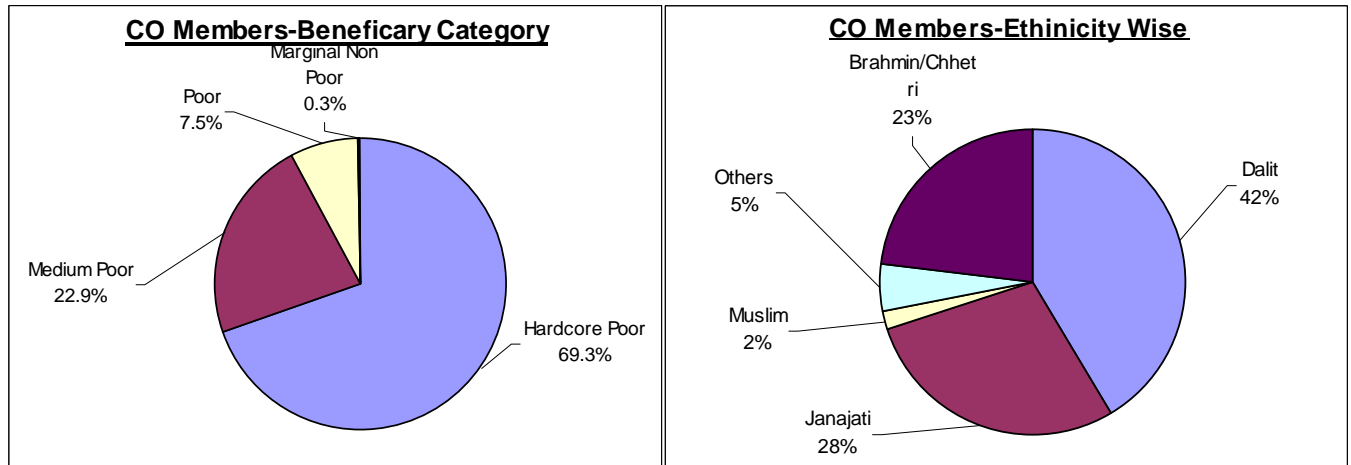
## Reach out to Excluded Poor Community Beneficiaries

PAF has taken the strategy to support the idea that poor community should be organized themselves to prepare, implement and manage their program and they should be in the driving seat, with decision making authorities. A social inclusion strategy to reach out to the poor specifically poor women, dalit and janjati are taken (*Annex-VIII*). Participatory community well- being ranking process identified the poor community members as primary beneficiaries at the settlement level. They are organized into community organization to plan, implement and manage the sub-projects.

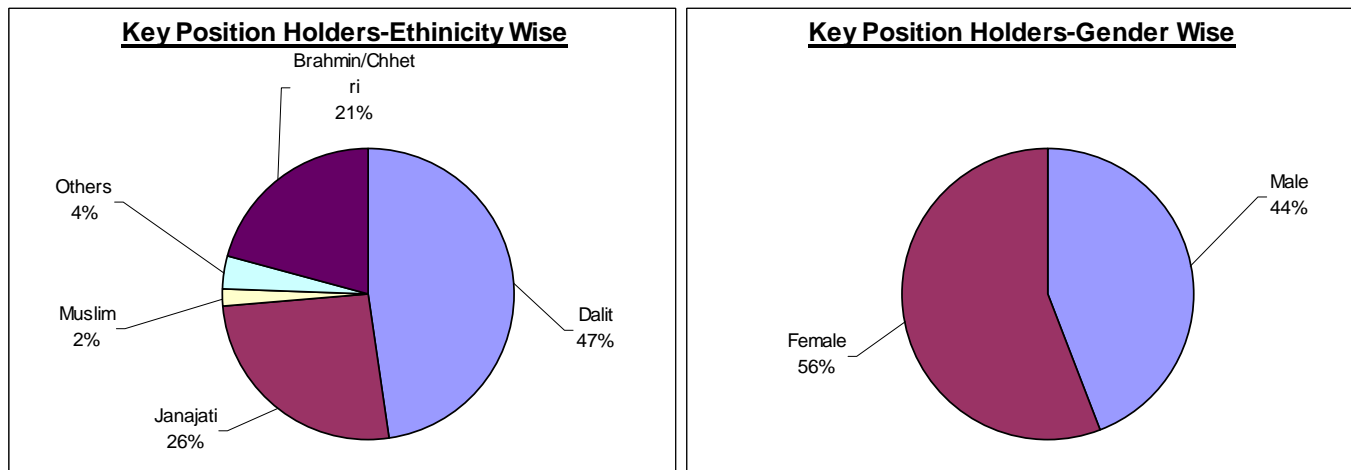
Among beneficiaries members in Community Organizations (COs), 69.3% members falls under hardcore poor category (food sufficiency less than 3 months among criteria fix by community), 22.9% members falls under medium poor category (food sufficiency more than 3 months but less than 6

months among criteria set by the community), 7.5% members falls under poor category (food sufficiency more than 6 months but less than a year among criteria set by the community) and 0.3% members falls under marginal Non-poor Category.

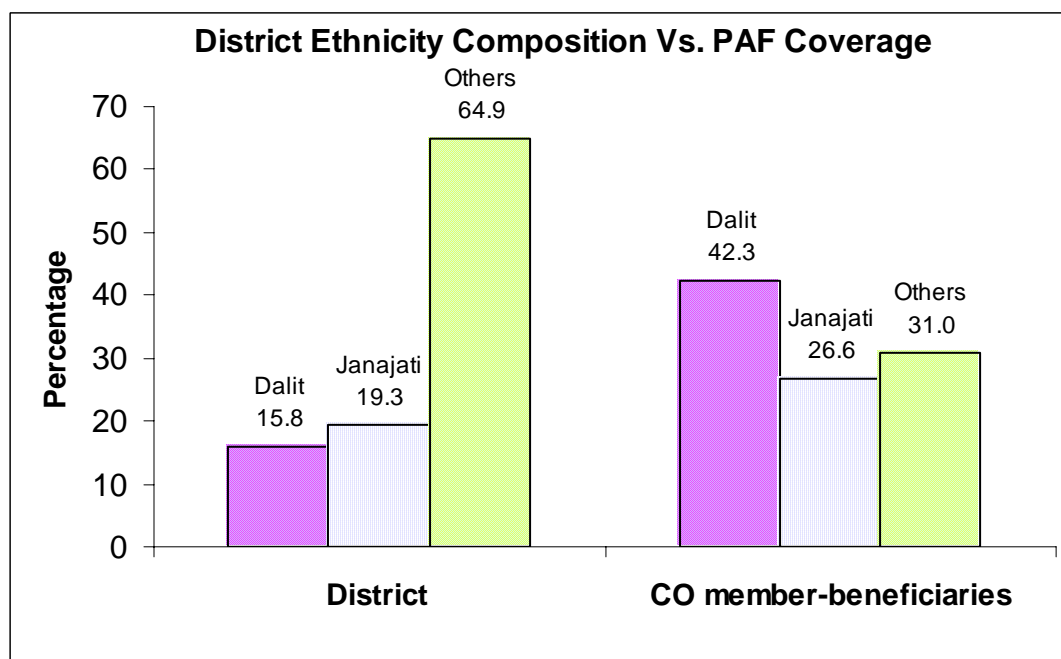
Likewise, CO member households constitutes 42% dalit, 28% janajati, 2% Muslim, 23% Brahmin/Chhetri and 5% other ethnicity. Gender wise, 67% are female members in Community Organizations (COs).



Similarly, the key position holders in the community organisation such as President, Treasurer, Secretary constitutes, 47% Dalit, 26% Janajati, and 2% Muslim and 21% Brahman/Chhetri, and 4% other ethnicity. Gender wise, 56% are female key position holders in Community Organizations (COs).



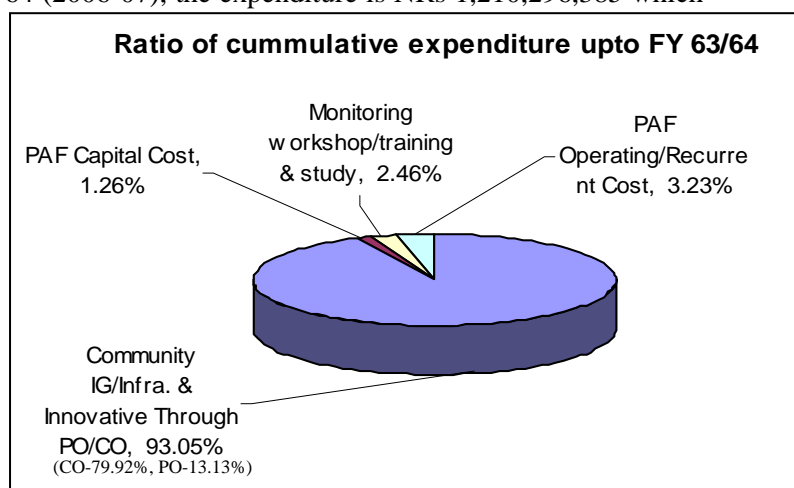
When percentage beneficiary of PAF by ethnicity is compared with district percentage ethnicity composition as shown in the graph below it is clear that PAF is focusing on socially excluded group such as Dalit and Janajati. PAF till now, however, covered about 36% of poor households in 25 districts.



## Budget Expenditure

The total expenditure in FY 2060/61 (2003-04), FY 2061/62 (2004-05), FY 2062/63 (2005-06) and FY 2063/64 (2006-07) were NRs.5,781,379, NRs. 247,322,606, NRs. 493,505,927 and NRs 1,210,296,385 respectively. Last FY 2063/64 (2006-07), the expenditure is NRs 1,210,296,385 which is 96.51% of total budget of NRs 1,254,070,000.00. Total expenditure of PAF till FY 2063/64 is NRs. 1,956,906,297.

Out of the total PAF expenditure of NRs. 1,956,906,297 till FY 2063/64 (2006-07), 93.05% was in Program Implementation through CO & PO (CO 79.92% and PO 13.13%), 2.46% in Monitoring, Training, Studies and Other Program Support, 1.26% in capital investment for PAF and 3.23% in PAF operation/ recurrent cost. Of the total expenditure 94.6% was from the World Bank IDA Grant and rest 5.4% from GoN source.



In this FY 2064/65 (2007-08), the expenditure till date is NRs 513,968,626 which is 29% of total budget of NRs 1,770,723,000.

Currently the PAF Project is funded by IDA Grant with US\$ 40.0 M for four years till February 2009 (This constitutes initial US\$ 15.0 M and additional US\$ 25.0 M). IDA grant of US\$ 100.0 M and IFAD Grant of US\$ 4.0 M are in pipeline.

## Lessons and Challenges

There is a high demand for the programme as the sub-projects originate at grass-root levels. Communities have demonstrated their keen interest to undertake the programme and make necessary contributions. The current challenge is to make a trade-off between rapid implementation and institution building enhancing the technical capability of the community organizations. In view of the wide varieties of activities undertaken within the sub-project, the challenges faced for sustainability of the sub-projects are:

- Linkage with market for sustaining income-generating activities.
- Providing appropriate technology support for different activities including linkages with existing service structure
- Availing Insurance Safety-Net particularly for livestock
- Exploring an alternative to livestock based activities for landless poor
- Building Community Capacity to Manage Revolving Fund and Operate the Sub-Projects
- Raise awareness of community through functional literacy

While working towards above challenges, it is inevitable to work with diversified groups of poor communities supporting each other and network for linkages and collaboration with other programmes and line agencies to support communities in different areas of strength of these programmes. Further, legal institutionalization of Community Organizations through coalition or formation of functional co-operatives and establishment of strong linkages with VDC/ DDC are also important for sustainability and long-term support to these community groups.

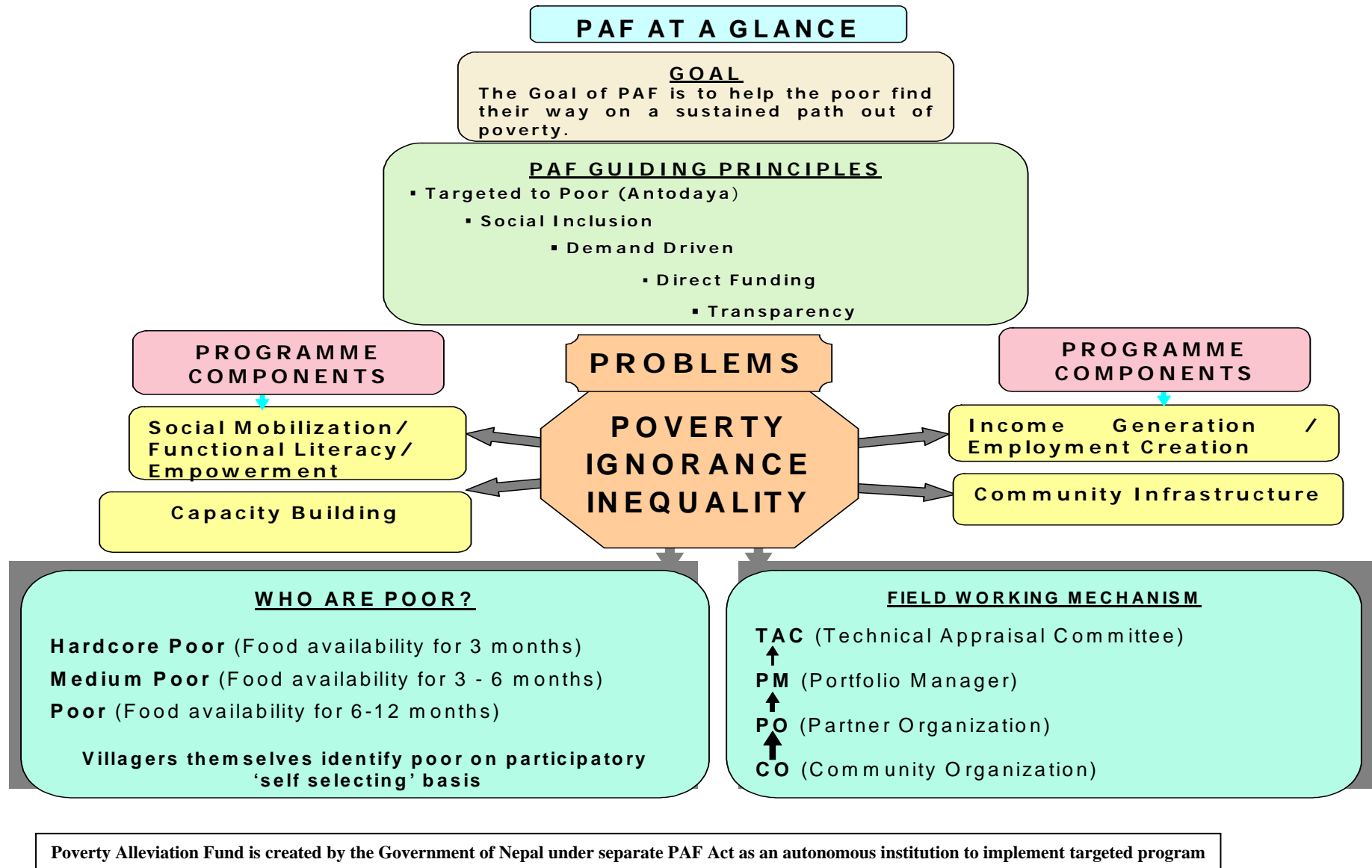
PAF is working with its exit strategy focusing on its strategic thrust to enable community to go to sustained path to get out of poverty within a stipulated 5-6 years of time.

Monitoring, Research and Development needs to be strengthened further to support the implementation including capacity building of main actors i.e. CO, PO, Local Bodies and PAF.

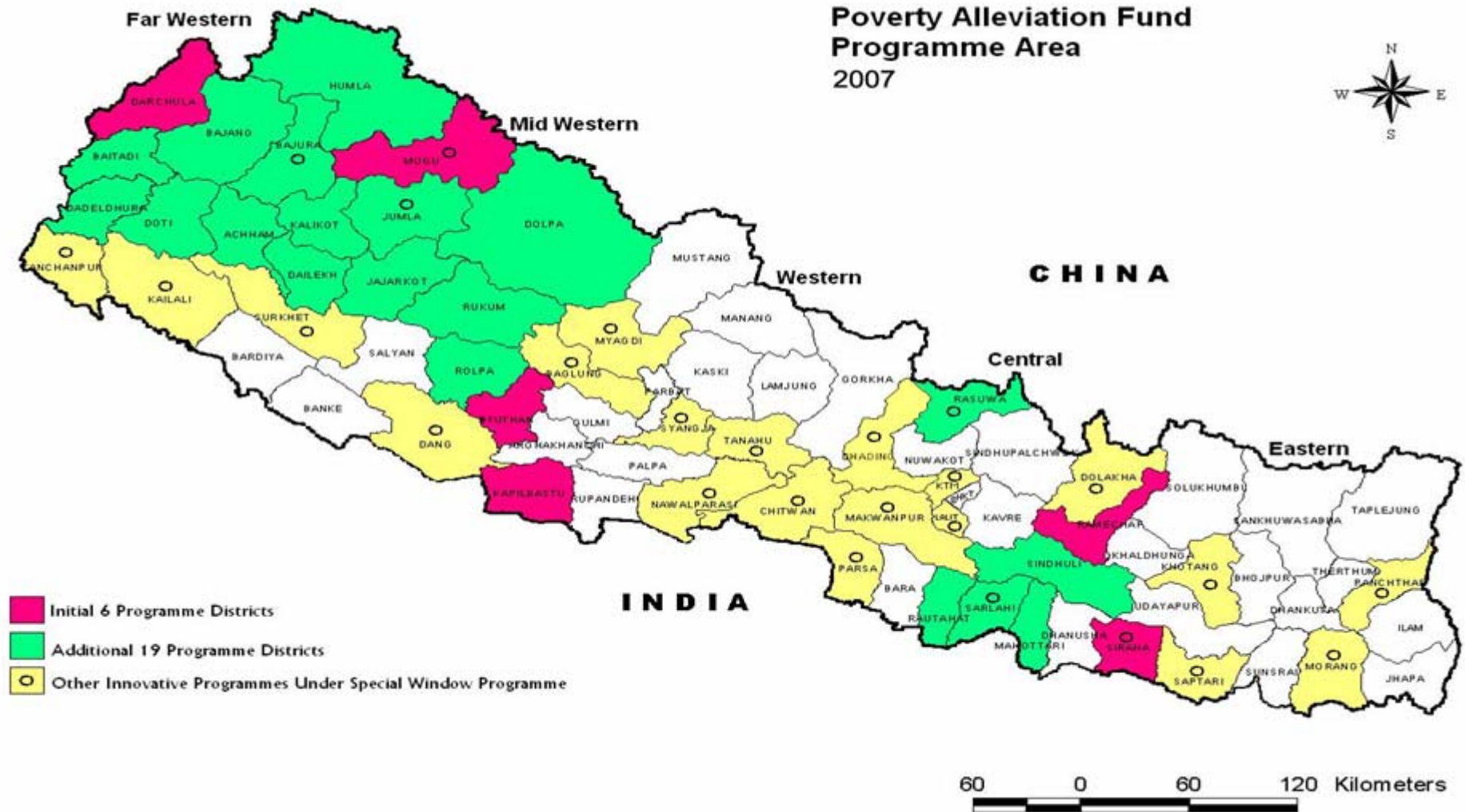
## Future Program District Coverage Plan

PAF has planned to cover all 75 districts in future. Program will be expanded in additional 15 districts in the Fiscal Year 2064/65 (2007/08) and additional 15 districts in FY 2065/66 (2008/09) from the list of deprived districts categorized by CBS/NPC based on 28 poverty related socio-economic indicators (Annex-IX). Remaining 20 districts will be covered through poverty pocket approach. The phasewise PAF program district coverage plan are shown in the map in Annex-X.

# Annex I: PAF Program at a Glance



# Annex II: PAF Programme Districts



## Annex III: Sub Project Activities

### Agriculture & Others

- Agro Forestry
- Apple Farming
- Asparagus Farming
- Badam Farming
- Banana Farming
- Bee Keeping
- Boring Pump
- Cereal Crops Farming
- Cloth Udhog
- Dairy Firm
- Dhaki Okhal
- Dhikki Pump
- Fertilizer Production
- Fishery
- Fruit Purify Center
- Fruits Farming
- Ginger Farming
- Green House
- Herbal Nursery
- Herbs Farming
- Juice Production
- Lokta Farming
- Maize Cultivation
- Milk Chilling Center
- Mushroom Farming
- Nursery
- Off Season Veg. Farming
- Power Treller (Tractor)
- Rice Cultivation
- Seeds Business
- Spray Machine
- Sugarcane
- Tree Contract
- Vegetable Farming

### Total of Agriculture & Animal Husbandary Activity

- Animal Insurance
- Animal Treatment Fund
- Badel Raising
- Buffalo Raising
- Chicken Cage Construction
- Cow Raising
- Donkey Raising
- Duck Raising
- Fooder
- Goat Raising
- He Bufallo Raising
- Horse Raising
- Muel Raising
- Ox Raising
- Pari Raising
- Pasture Land
- Pig Raising
- Pigeon Keeping
- Poultry
- Rabbit Keeping
- Sheep Raising
- Yak Raising

### Total of Animal Capacity Building Activity

- Aamchi Training
- Account And Store Mgt
- Account Keeping Training
- Agro Forestry Training

- Agrovat Training
- Animal And Market Dev
- Animal Health Training
- Animal Health Worker Training
- Animal Husbandary Training
- Animal Insurance Training
- Animal Raising Training
- Asparagus Managemet
- Asparagus Marketing Training
- Awareness Training
- Banana Farming Training
- Beauty Parlor Training
- Bee Keeping Training
- Buffalo Raising Training
- Candle Making Training
- Carpentry Training
- Carpet Making Training
- Cemented Ring Making
- Child Development
- Child Literacy Class
- CO Management Training
- Commuity Awareness Training
- Communication Training
- Compost Fertilizer
- Computer Maintenance
- Computer Training
- Cottage Industry Training
- Cow Raising Training
- Cycle Maintenance Training
- Dairy Technician Training
- Dalmoth Making Training
- Diseases Prevention Training
- Driving Training
- Editing Training
- Electronics Training
- Environment Conservation &
- Fertilizer Prodn Training
- First Aid Training
- Fish Business Training
- Fishery Training
- Forest Management Taining
- Fruits Farming Training
- Fruits Purify & Mgmt. Training
- Furniture Training
- Gender Equality & Dev. Trg
- Ghatta Mgmt. Training
- Ginger Cultivation Training
- Goat Raising Training
- Goldsmith Training
- Group Mgmt. And Leadership
- Health And Sanitation
- Herbal Nursery Management
- Horse Raising Training
- Hotel Mgmt. Training
- House Wiring Training
- Improved Stove Training
- JTA Training
- Kitchen Grdening Training
- Leadership Training
- Literacy Class
- Market Management Training
- Masson Training
- Mechanical Training
- Medical Mgmt. Training
- Metal Tools Making Training
- Metal Work Training
- Micro Enterprise Training
- Milk Business Training
- Misc. Capacity Building
- Nanglo Making Training
- Noodles Making Training
- Nursery Management
- Off Season Veg Farming



- Organisation Management
- Painting Training
- Pasture Land Mgt. Training
- Photographer Training
- Pig Raising Training
- Pickle Making Training
- Plantation Training
- Plumber Training
- Pond Maintenance Training
- Poultry Training
- Power Treller Mgmt. Training
- Project Management Training
- Pump Operation Training
- Rabbit Keeping Training
- Radio TV Maintenance Training
- Radipakhi Bunai Training
- Repair And Maintenance
- Retail Business Training
- Rikshwa Maintenance
- Saloon Training
- Saving & Credit Mgmt. Trg.
- Seed Development Training
- Sewing Cutting Training
- Sheep Raising Training
- Shoe Making Training
- Skill Development Training
- Soap Making Training
- Solar Maintenance &
- Stamp Making Training
- Study Tour
- Sudeni Training
- Tailoring Training
- Tap Maintenance Training
- Tapari Training
- Toilet Construction Training
- Vegetable Farming Training
- Vegetable Storage Training
- Vehicle Maintenance Training
- Vetnery Training
- Water Supply Maintenance
- Women Health Training
- Women Skill Development
- Wood Craft Training

### **Infrastructure-IG**

- Canal
- Community Building
- Culvert
- Culvert And Dam
- Deep Boring
- Duck, Pigion, Chicken
- Ghatta
- Irrigation
- Irrigation Rehabilitation
- Motor
- Plastic Pond
- Pond
- Pond Maintenance
- Pump Set
- Rice Mill
- Road
- Road And Culvert
- Solar System
- Strecher
- Water Harvest Tank
- Water Pump
- Well
- Wooden Bridge

### **Infrastructure-Social**

- Bridge Construction
- Building Construction
- Drain

- Dumping Site
- Electricity
- Fensing
- Hand Pump
- Hume Pipe
- Micro Hydro
- Micro Irrigation
- River Training Work
- Road And Well
- Road Gravel And Hume Pipe
- Road Maintenance
- School Boundary Wall
- School Building/Room
- School Maintenance
- Suspension Bridge
- Toilet
- Tube Well
- Water Intake Repair
- Water Supply And Micro Irrigation
- Water Supply And Sanitation
- Water Supply Maintenance
- Water Supply/Drinking Water
- Wire Bridge

### **Manufacturing & Others**

- Agri Tools
- Bag
- Bread Udyog
- Candle Udhoyog
- Carpentry
- Carpet
- Chiura Udyog
- Clay Utensils
- Cottage Industry
- Dalmoth Udhoyag
- Doko Namlo Rope
- Essence
- Farma
- Fiber Material Making
- Furniture Business
- Garment
- Improved Stove Making
- Madal Making
- Metal Products Production
- Muda
- Nanglo
- Pickle Udhoyog
- Potato Chips
- Pottery (Manufacture)
- Rope Making
- Shoe Making
- Sweater Udyog
- Sweet Shop
- Tapari
- Thanka
- Titaura
- Tyle Industry
- Umbrella Udyog

### **Service Sector**

- Agrovat
- Auto Rickshaw
- Band Baaja
- Bicycle And Motorcycle
- Bus Truck Maintenance
- Cart Service
- Communication Service
- Computer Maintenance
- Cycle Maintenance
- Dhalan Pharma
- Goods Transportation
- Help To Disable People
- Hotel
- Improved Aran

- Laundry
- Loud Speaker
- Masson Instruments
- Mechanical Workshop
- Mill (Kutani Pisani)
- Motorcycle Maintenance
- Painting
- PCO
- Photo Studio
- Plumber Instruments
- Radio TV Maintenance
- Restaurant
- Rikshwa
- Rikshwa Maintenance
- Saloon
- Screen Print
- Sewing Machine
- Sheltering Business
- Solar Repairing &
- Tailoring
- Tea Shop
- Tent House
- Thela Gada
- Transportation Service
- Vehical Maintenance
- Washing Machine
- Welding Shop

#### **Social Service**

- Birth Certificate And
- First Aid Instruments
- Health And Sanitation
- Health Post
- Improved Stove
- Scholarship
- School Furniture
- Tripal

#### **Trading**

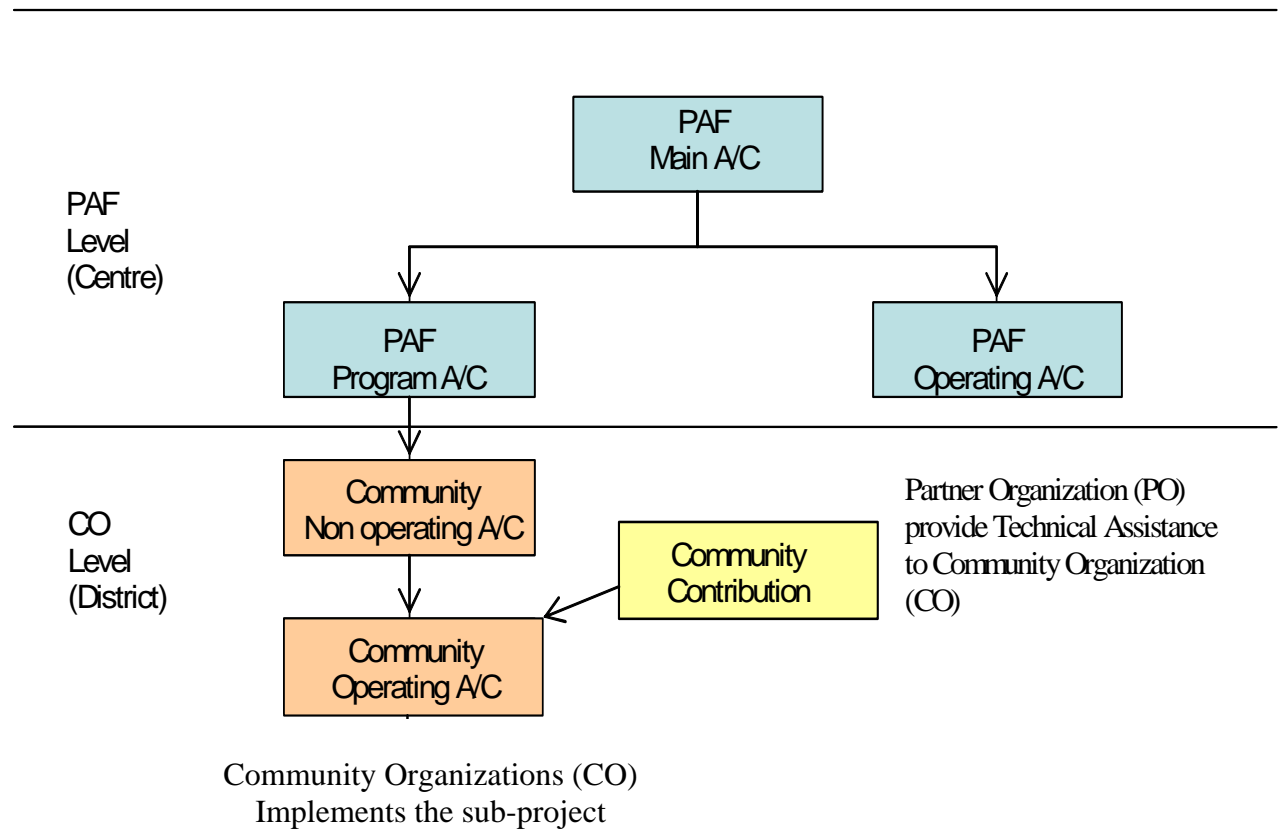
- Aggregate
- Agricultural Input Business
- Animal Business
- Bamboo Business
- Beauty Parlor
- Bhujiya Shop
- Book Shop
- Chuna Business
- Cloth Business
- Cooperative Shop
- Dhaka Bunai
- Dry Fish Business
- Egg Business
- Electric Shop
- Fancy Shop
- Fish Business
- Fruits And Vegetable Shop
- Fruits Shop
- Galla
- General Stores
- Gold & Silver Shop
- Herbs Business
- House Wiring
- Ice Crea, Kulfi, Chaat

- Jewelry Shop
- Kawadi Business
- Kerosene Shop
- Leather Business
- Lohari Giri
- Manihara Business
- Masala Udyog
- Meat Shop
- Medicine Shop
- Metal Business
- Micro Enterprise
- Milk Business
- Mobile Retail Shop
- Nepali Paper Udhog
- Noodles Business
- Paan Shop
- Plastic Shop
- Pottery Shop
- Purse, Belt Shop
- Radipakhi Bunai
- Retail Business
- Rice Business
- Shoe Shop
- Soap Industry
- Stamp Making Shop
- Stationary
- Thela Business
- Tobacco Business
- Utensial Shop
- Vegetable Shop
- Vetnary Shop
- Watch Shop
- Wood Business

#### ***INNOVATIVE ACTIVITIES***

- Water supply cum Micro-irrigation and integrated agriculture in hills
- Improved Wire Bridge (Tar Pool)
- Support poor for inclusion in micro-hydro project through IG
- Support community effort to complete irrigation project for vegetable farming
- Micro-financing and subsidy scheme for Arsenic Filters to the community
- Pigeon keeping
- Fish cultivation in lake and rice fields
- Rice intensification
- Cardamom cultivation in community forest
- Briquette Production
- Integrated Approach in agro based IG
- Orange and Coffee production and marketing management
- Healthy women for sustainable development
- Introducing Wi-Fi Technology in rural areas
- Evaporative cooling technology for food preservation

# Annex IV: Funds Flow Modality



## Annex V: CO registration, agreement for sub-project and disbursement status

District	CO Registered w/ PAF (No.)	Agreement			Disbursement			
		With CO	No.	Amount (NRs.)	Non Operating		Operating	
					Sub Project No.	Amount (NRs.)	Sub Project No.	Amount (NRs.)
<b>Special Programme</b>								
Achham	227	225	239	85,847,481.00	232	80,086,894.00	142	26,177,577.40
Baitadi	397	167	187	84,690,843.72	161	69,919,133.44	119	32,549,784.45
Bajhang	123	119	150	50,807,844.35	138	46,911,892.35	61	13,765,186.00
Bajura	134	134	159	79,082,461.86	136	68,095,831.45	102	39,472,725.62
Dadeldhura	136	135	136	48,710,733.99	135	48,208,623.99	134	45,895,201.97
Dailekh	137	137	137	56,363,077.00	137	49,334,834.20	107	25,766,450.00
Dolpa	117	117	117	55,743,374.00	70	22,167,465.60	70	22,167,465.40
Doti	192	177	179	78,387,752.00	177	77,386,582.00	152	52,095,166.00
Humla	153	153	171	62,544,098.00	137	45,798,599.00	131	29,085,639.80
Jajarkot	206	160	160	91,045,667.95	103	54,438,030.24	96	39,581,869.25
Jumla	169	168	172	122,158,937.00	181	108,915,650.00	105	39,775,721.60
Kalikot	104	104	104	47,580,539.00	104	28,548,323.40	93	25,093,643.40
Mahottari	309	306	308	111,139,156.00	258	83,058,224.60	203	46,138,878.40
Rasuwa	185	166	177	65,694,029.97	155	55,965,970.30	147	44,131,761.44
Rautahat	266	258	258	133,468,041.75	258	105,170,913.15	258	88,909,674.15
Rolpa	7	7	7	2,763,900.00	7	1,658,340.00	7	1,658,340.00
Rukum	81	70	71	27,494,239.00	69	20,091,567.00	34	7,187,287.00
Sarlahi	159	159	159	57,426,782.00	154	55,946,246.20	34	10,861,092.00
Sindhuli	262	262	286	121,187,472.50	286	118,864,068.13	166	52,366,638.80
<b>19 Dist. Tot</b>	<b>3,364</b>	<b>3,024</b>	<b>3,177</b>	<b>1,382,136,431.09</b>	<b>2898</b>	<b>1,140,567,189.05</b>	<b>2161</b>	<b>642,680,102.68</b>
<b>Regular Programme</b>								
Darchula	414	400	441	149,469,235.33	437	140,265,312.50	426	114,343,597.93
Kapilbastu	482	479	480	248,141,358.02	846	245,255,655.52	827	192,397,964.22
Mugu	145	132	149	49,807,343.00	164	48,403,406.80	144	37,574,536.50
Pyuthan	264	262	287	106,912,540.07	253	85,595,101.85	252	67,655,926.87
Ramechhap	292	289	292	88,330,909.29	326	80,764,996.29	327	64,401,935.90
Siraha	575	456	460	183,905,142.04	641	172,636,376.19	610	138,563,884.23
<b>6 Dist. Tot</b>	<b>2,172</b>	<b>2,018</b>	<b>2,109</b>	<b>826,566,527.75</b>	<b>2667</b>	<b>772,920,849.15</b>	<b>2586</b>	<b>614,937,845.65</b>
<b>25 Dist. Tot</b>	<b>5,536</b>	<b>5,042</b>	<b>5,286</b>	<b>2,208,702,959</b>	<b>5,565</b>	<b>1,913,488,038</b>	<b>4,747</b>	<b>1,257,617,948</b>
<b>Innovative Programme</b>								
Baglung	1	1	1	722,165.00	1	722,165.00	1	361,000.00
Chitawan	12	12	16	4,111,820.00	16	4,111,820.00	12	2,347,000.00
Dhading	56	56	57	21,669,467.00	29	9,590,375.00	29	9,465,836.00
Kanchanpur	80	79	79	25,626,092.00	76	24,573,692.00	76	20,509,826.00
Kavrepalan	1	1	1	1,735,037.00	1	1,735,037.00	1	1,214,526.00
Makwanpur	43	41	41	10,692,876.52	41	10,232,016.52	40	8,092,721.02
Morang	61	61	61	32,087,754.87	46	20,874,621.87	46	19,081,511.87
Nawalparasi	1	1	1	1,551,248.00	1	1,551,248.00	1	1,551,248.00
Rasuwa	1	1	1	2,181,450.00	1	2,181,450.00	1	2,181,450.00
Sarlahi	27	27	27	7,812,750.00	27	7,812,750.00	27	5,398,200.00
Surkhet	1	1	1	3,015,982.00	1	3,015,982.00	1	2,020,708.00
<b>Sub Total</b>	<b>284</b>	<b>281</b>	<b>286</b>	<b>111,206,642.39</b>	<b>240</b>	<b>86,401,157.39</b>	<b>235</b>	<b>72,224,026.89</b>
<b>Total =</b>	<b>5,820</b>	<b>5,323</b>	<b>5,572</b>	<b>2,319,909,601.23</b>	<b>5805</b>	<b>1,999,889,195.59</b>	<b>4982</b>	<b>1,329,841,975.22</b>

## Annex VI: Completed Sub Projects (1)

<u>District</u>	No	<u>District</u>	No
<b><u>Income Genetation</u></b>		<b><u>Infrastructure</u></b>	
<b>Registered As</b>	Special	<b>Registered As</b>	Special
Baitadi	1	<u>Jumla</u>	4
Bajhang	1	<u>Rasuwa</u>	4
Dadeldhura	118		8
Dolpa	14	<b>Registered As</b>	Regular
Doti	17	<u>Darchula</u>	57
Jumla	11	<u>Kapilbastu</u>	190
Mahottari	9	<u>Mugu</u>	37
Rasuwa	78	<u>Pyuthan</u>	5
Rautahat	63	<u>Ramechhap</u>	14
Rukum	13	<u>Siraha</u>	126
Sarlahi	4		429
Sindhuli	52	<b>Registered As</b>	Innovative
	<b>381</b>	<u>Makwanpur</u>	12
<b>Registered As</b>	Regular	<u>Morang</u>	45
Darchula	103	<u>Nawalparasi</u>	1
Kapilbastu	195		58
Mugu	64	<b><u>Infrastructure Total</u></b>	495
Pyuthan	43	<b><u>Total Investment</u></b>	1,659
Ramechhap	55		
Siraha	248		
	<b>708</b>		
<b>Registered As</b>	Innovative		
Dhading	29		
Morang	46		
	<b>75</b>		
<b>Income Genetation Total</b>	<b>1,164</b>		

### **No of Completed Infrastructures by Types**

<b>Infrastructure-IG</b>		<b>Infrastructure-Social</b>	
Boring Pump	15	Bridge	3
Dhikki Pump	13	Building	
Ghatta		Culvert	19
Irrigation	1660	Drainage	3
Plastic Pond	1	Dumping Site	56
Pond	1	Electricity Line	10
Pump Set/Motor	26	Hume Pipe	2
Rice Mill	4	Micro Hydro	4
Road	27	School Maintenance	3
Water Pump	5	Solar System	1
		Toilet	1133
		Water Supply	661
		Water Supply Maintenance	1
		<b><u>Total of Infrastructure-Social</u></b>	<b><u>1955</u></b>

## Annex VI: Sub-Project Physical Achievement (2)

SN	Activities	No. of Beneficiary HH
<b>A</b>	<b>Income Generating Activities</b>	<b>177,211</b>
	Agriculture & Others	14,887
	Livestock	97,438
	Manufacturing & Others	40,975
	Service Sector	4,787
	Social Service	4,744
	Trading	14,380
<b>B</b>	<b>Infrastructure</b>	<b>56,993</b>
<b>i</b>	<b>Infrastructure-IG</b>	<b>24,178</b>
	Boring Pump	364
	Canal	97
	Dhikki Pump	129
	Ghatta	437
	Irrigation	6,485
	Irrigation Rehabilitation	166
	Milk Chilling Centre	357
	Plastic Pond	91
	Pond	54
	Pond Maintenance	169
	Pump Set/Motor	177
	Rice Mill	17
	Road	15,382
	Road Maintenance	223
	Water Pump	30
<b>ii</b>	<b>Infrastructure-Social</b>	<b>32,815</b>
	Bridge	2,989
	Building	5,481
	Culvert	6,819
	Dam	
	Drainage	0
	Dumping Site	107
	Electricity Line	1,404
	Fencing	22
	Hume Pipe	232
	Micro Hydro	2,414
	River Training Work	104
	School Boundary Wall	76
	School Maintenance	297
	Solar System	657
	Toilet	3,410
	Water Supply	8,406
	Water Supply Maintenance	397
<b>C</b>	<b>Capacity Building</b>	<b>130,570</b>

## Annex-VII: POs, COs and Coverage

District	No. of Working Pos	Total VDC + Municipality in District	PO Committed No. of VDC	CO Working VDC	Sub Proj. No.		Beneficiary	
					IG	Infra	CO Member	Total Beneficiary
<b>Initial 6 Districts</b>								
Darchula	11	41	41	41	314	136	8,886	13,580
Kapilbastu	11	78	55	47	477	374	13,384	22,858
Mugu	6	21	20	21	104	61	4,166	5,515
Pyuthan	12	49	37	35	254	42	7,922	8,812
Ramechhap	11	55	44	40	289	38	7,632	7,555
Siraha	20	108	71	49	439	239	11,696	13,263
<b>Sub Totl (6 Dist.)=</b>	<b>71</b>	<b>352</b>	<b>268</b>	<b>233</b>	<b>1,877</b>	<b>890</b>	<b>53,686</b>	<b>71,583</b>
<b>19 Additional Districts</b>								
Achham	7	75	33	27	228	11	6,683	7,820
Baitadi	7	63	30	31	147	40	6,177	6,506
Bajhang	3	47	18	18	97	54	2,758	4,752
Bajura	4	27	20	20	134	25	4,274	6,164
Dadeldhura	8	21	16	16	135	1	3,756	3,714
Dailekh	5	56	25	25	137		4,992	4,992
Dolpa	3	19	12	12	117		3,622	3,620
Doti	5	51	21	21	176	3	5,727	5,892
Humla	5	27	22	15	153	18	3,592	4,075
Jajarkot	8	30	26	26	160		5,929	6,059
Jumla	7	30	21	18	166	69	6,477	6,631
Kalikot	6	30	22	18	104		3,735	3,735
Mahottari	12	77	23	22	308		7,844	7,572
Rasuwa	7	18	15	14	170	8	4,633	4,867
Rautahat	9	97	27	26	258		7,382	7,376
Rolpa	1	51	4	1	7		210	210
Rukum	4	43	12	10	71		2,133	2,170
Sarlahi	15	100	35	36	159		4,767	4,633
Sindhuli	10	54	32	24	255	31	8,897	10,340
<b>Sub Tot (19 Dist.)=</b>	<b>126</b>	<b>916</b>	<b>414</b>	<b>380</b>	<b>2,982</b>	<b>260</b>	<b>93,588</b>	<b>101,128</b>
<b>Sub Tot (25 Dist.)=</b>	<b>197</b>	<b>1,268</b>	<b>682</b>	<b>613</b>	<b>4,859</b>	<b>1,150</b>	<b>147,274</b>	<b>172,711</b>
<b>Innovative Programme Districts</b>								
Baglung	0	60	0	1		1	13	142
Nawalparasi	0	74	0	1		1	11	705
Rasuwa	0	18	0	1		1	11	384
Surkhet	0	48	0	1		1	9	655
Chitawan	1	38	5	4	12	4	295	409
Dhading	1	50	5	5	57		1,641	1,613
Jumla	0	30	5					
Kanchanpur	1	20	20	8	79		1,893	1,956
Kavrepalanchok	1	90	1	1	1	1	11	125
Lalitpur	1	42	1					
Makwanpur	2	44	17	14	29	12	1,038	1,068
Morang	3	65	3	3	61	45	2,301	2,310
Sarlahi	1	100	5	5	27			734
Siraha	1	108	2				665	
<b>Sub Total =</b>	<b>12</b>	<b>787</b>	<b>64</b>	<b>44</b>	<b>266</b>	<b>66</b>	<b>7,888</b>	<b>10,101</b>
<b>NDM</b>	<b>12</b>		<b>22</b>					
<b>Total =</b>	<b>221</b>	<b>2,055</b>	<b>768</b>	<b>657</b>	<b>5,125</b>	<b>1,216</b>	<b>155,162</b>	<b>182,812</b>

Note: 6 POs worked in initial 25 districts were dropped due to poor performance

## Annex VIII: Social Inclusion Strategy Reaching the Poor

<u>Targeting Sequence</u>	<u>Key Actor</u>	<u>Tools/Methods</u>
<b>Districts</b> ↓	PAF Management	District Level Indicators (CBS/NPC)
<b>VDCs</b> ↓	PAF Management Portfolio Manager	VDC Prioritization DDC-Level Stakeholders' Consultation
<b>Wards</b> ↓	Partner Organization (PO)	VDC-Level Interaction
<b>Settlements</b> ↓	Partner Organization (PO) Community	Ward-Level Interaction Settlement-Level Sensitization Settlement Social Mapping Social Assessment/ Wellbeing Ranking
<b>Community</b> ↓	Community Community Org. (CO)	Identification of Target Households Formation of COs Registration of COs
<b>Target Beneficiaries</b>	Community Org. (CO)	Project Development Link with District DDC plan Community Action Planning



## Annex IX: Ranking of Districts based on Composite Index of 28 Socio-Economic Indicators)

Overall Composite Index

National Value: 0.47269

Group A		
District	Rank	Composite Index
Kathmandu	1	1.00000
Bhaktapur	2	0.94228
Lalitpur	3	0.87434
Chitawan	4	0.71278
Kaski	5	0.70404
Kavre	6	0.64372
Palpa	7	0.61285
Rupandehi	8	0.60565
Syangja	9	0.60197
Tanahu	10	0.58173
Jhapa	11	0.55714
Ilam	12	0.55623
Dhankuta	13	0.55584
Mustang	14	0.55201
Makwanpur	15	0.54841
Baglung	16	0.53291
Parbat	17	0.52436
Kanchanpur	18	0.52062
Sankhuwasabha	19	0.50255
Manang	20	0.49750
Kailali	21	0.49575
Dang	22	0.49242
Sunsari	23	0.49167
Banke	24	0.49080
Gorkha	25	0.48985

Group B		
District	Rank	Composite Index
Nuwakot	26	0.47767
Arghakanchi	27	0.46901
Lamjung	28	0.46694
Morang	29	0.46646
Nawalparasi	30	0.46289
Surkhet	31	0.46244
Bhojpur	32	0.45165
Gulmi	33	0.44916
Myagdi	34	0.44585
Dolakha	35	0.43765
Terhathum	36	0.43174
Dhanusa	37	0.41438
Bardiya	38	0.40130
Parsa	39	0.39876
Taplejung	40	0.38708
Dhading	41	0.38682
Panchthar	42	0.38532
Sindhupalchoke	43	0.37532
Solukhumbu	44	0.36443
Udayapur	45	0.36209
Saptari	46	0.35705
Salyan	47	0.35475
Khotang	48	0.35223
Bara	49	0.35200
Okhaldhunga	50	0.34404

Group C		
District	Rank	Composite Index
Sindhuli	51	0.34369
Sarlahi	52	0.33555
Rautahat	53	0.31535
Pyuthan	54	0.31502
Kapilbastu	55	0.31194
Ramechhap	56	0.30545
Baitadi	57	0.29367
Rukum	58	0.28686
Rasuwa	59	0.28023
Darchula	60	0.27206
Mahotari	61	0.26799
Jajarkot	62	0.26047
Doti	63	0.24781
Siraha	64	0.23094
Dadeldhura	65	0.22553
Rolpa	66	0.21651
Dailekh	67	0.21272
Jumla	68	0.20902
Kalikot	69	0.15247
Dolpa	70	0.13668
Bajura	71	0.11027
Achham	72	0.10632
Bajhang	73	0.05931
Humla	74	0.00414
Mugu	75	0.00000

Source: District Level Indicators of Nepal for Monitoring Overall Development (Based on Selected Socio-Economic Indicators), National Planning Commission Secretariat, Central Bureau of Statistics, 2003

# Annex X: Phase wise PAF Programme District Coverage Plan

