

Poverty Alleviation Fund (PAF)

Program Implementation Status

(as of 28 February 2007)

Poverty Alleviation Fund (PAF) is implementing targeted demand-driven community based program directly supporting the third pillar of Tenth Plan/ Poverty Reduction Strategy Paper-PRSP of the Government of Nepal (GoN), i.e. targeted program. Presently PAF is implementing its program in 44 districts. Initially it selected six districts viz. Darchula, Mugu, Pyuthan, Kapilbastu, Ramechhap and Siraha for programme implementation. From the FY 2062/63 (2005/06 AD), 19 additional districts are selected as PAF special programme districts (Achham, Baitadi, Bajhang, Bajura, Dadelhdhura, Dailekh, Dolpa, Doti, Humla, Jajarkot, Jumla, Kalikot, Mahottari, Rasuwa, Rautahat, Rolpa, Rukum, Sarlahi and Sindhuli). With this, PAF now covers all the 25 districts from Group-C categorized as most deprived districts by CBS/NPC based on 28 poverty related social-economic indicators. Besides working in these project districts, PAF is implementing innovative programme in other 19 districts as well under the special innovative window programme to capture replicable innovative initiatives to reach to the poor. The current PAF program districts are shown in *Annex-I*.

Demand-Driven Community Proposals and Direct Funding

Till date 4,254 community organizations (COs) are registered in PAF (1,638 in Initial 6 Districts, 2,358 in Additional 19 Districts and rest 258 are through Innovative Window Programme Districts). Accordingly, community proposals are also prepared with participatory planning process. Out of total registrations, PAF made agreement with 3,769 COs (1,555 are in Initial 6 Districts, 1,975 in Additional 19 Districts and rest 239 in Innovative Window Programme Districts) and community are implementing the sub-project (The district wise details on CO registration and agreement are shown in Annex-IV). Based on community demand, several different activities related to Income Generation and Infrastructure sub-projects are proposed and included in the program implementation. Income generation activities are related to agriculture, livestock, cottage industries, trade and services. Similarly, infrastructure are related to micro-irrigation, link road, culvert/bridges, micro-hydro, water supply, sanitation, school and health post buildings. Program activities, in general, being implemented by the community are listed in Annex-II.

The agreement made with 3,769 COs amounts to NRs. 1570136238.31 and it is in the process of disbursement to Community Accounts. Till date NRs 1,139,129,719.45 is disbursed to community non-operating account and NRs 670,599,120.04 is disbursed to community operating account. The community fund flow modality is shown in Annex-III and details on CO agreement and disbursement status is shown in Annex-IV.

In FY 2061/62, the agreements were made with 595 COs amounting to NRs. 240,197,944 and out of this NRs. 199,652,928 was disbursed to community non-operating account and NRs. 64,098,744 is disbursed to community operating account. In the FY 2062/63, the agreement was made with 1070 additional COs amounting to NRs 526,156,592 out of which NRs. 383,883,292 was disbursed to community non-operating account of which NRs. 226,342,822 was disbursed to community operating account. In this FY 2063/64, till date the agreement is made with 465 additional COs amounting to 132,888,299.68 of which NRs. 555,593,500.05 was disbursed to community Non Operating Account and NRs. 380,157,552.81 was disbursed to operating account of COs.

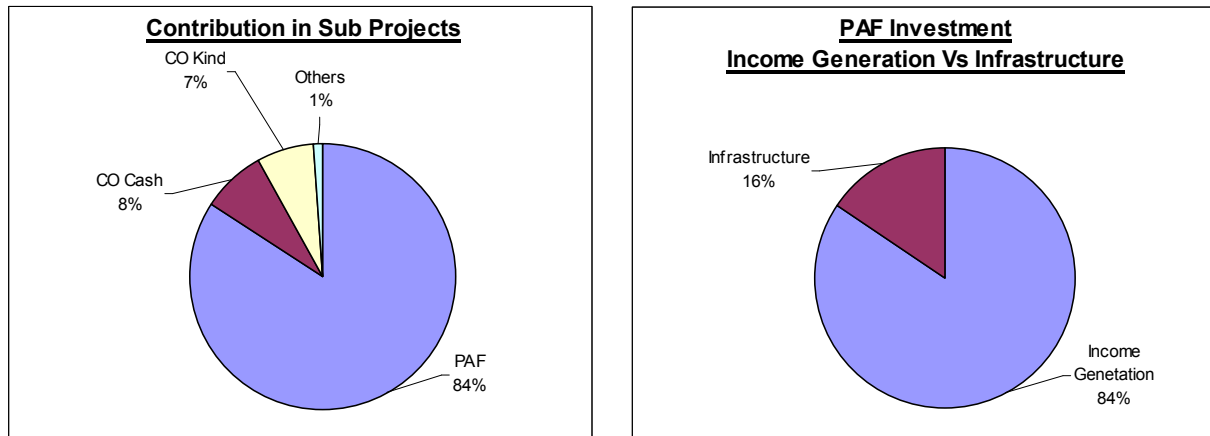
The community sub projects are in different stages of implementation. Second level of demand and proposals are also started receiving upon completion of first sub project activities. A list of completed sub project activities are listed in Annex-V.

Additionally, PAF considered financing 12 out of 20 winning innovative proposals of Nepal Development Market Place (NDM)-World Bank. Agreements are made with those 12 POs that amounts NRs. 14,758,416 to work in 22 VDC of Bajura, Chitwan, Dolakha, Kailali, Kanchanpur, Kathmandu,

Myagdi, Morang, Panchthar, Parsa, Saptari, and Syangja districts serving about 8,634 poor households. Till date, NRs. 13,878,493.00 is disbursed and implementation is in different stages. Further PAF is monitoring the World Bank financed NDM projects in Dang, Khotang and Tanahun districts.

Community Cost Sharing

PAF is investing 84% of the total sub-project cost. Community sharing is 15% (8% in Cash and 7% in Kind) of the total sub-project costs whereas other organizations are sharing 1% in total sub-project cost. In Income Generating sub projects, community is sharing 9% in cash and 2% in kind whereas in Infrastructure sub projects, it is 1% in cash and 26% in kind.



Out of the total PAF investment, 84% is in Income Generating sub-projects and 16% is in Infrastructure sub-projects. The sub-project activities undertaken are shown in Annex-II.

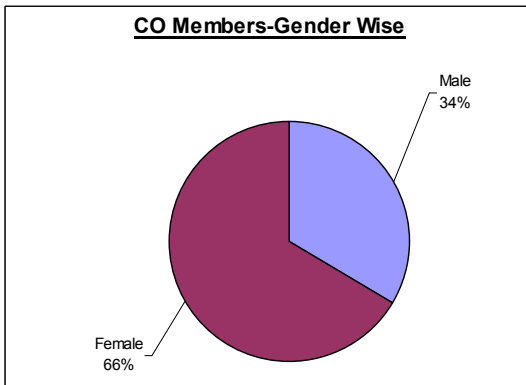
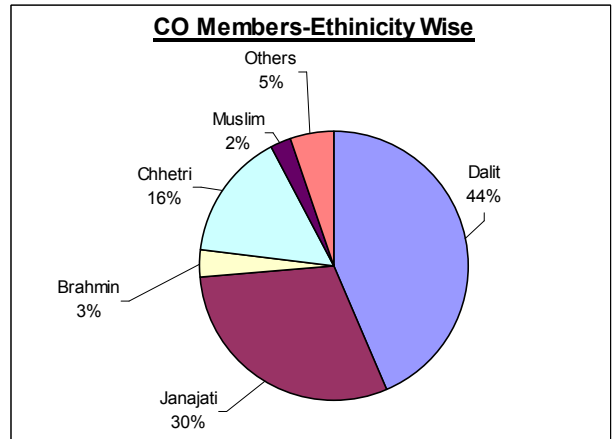
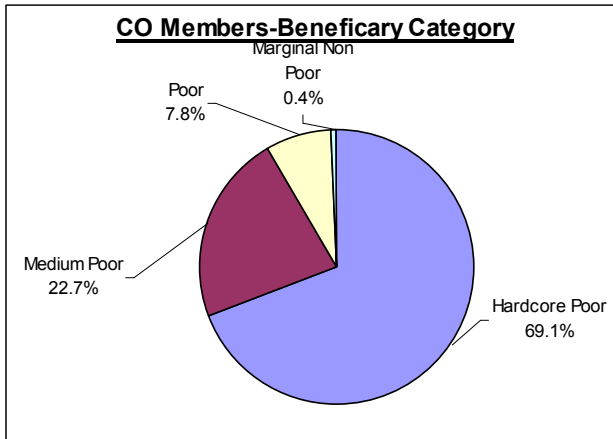
Partner Organization Supporting Community

The objectives of PAF to select Partner Organizations (POs) are to facilitate Community Organisations (COs). The facilitation shall be in organising COs, their capacity development, planning activities, carryout detailed survey design & estimates, proposal submission, as well as technical assistance and monitoring during implementation. As such, 222 Partner Organizations (POs) are working with communities (74 for Initial 6 Districts, 124 for Additional 19 Districts, 12 for Innovative Window program and 12 for Innovative NDM-World Bank Programme). Till date POs facilitated communities in total 703 VDCs (243 in Initial 6 Districts, 375 in Additional 19 Districts, 63 in Innovative Window Programme Districts and 22 in NDM-World Bank Programmes) and Community Organizations (COs) are implementing in 557 VDCs. Till date 126,950 poor households in those VDCs are served, out of which 107,170 households are member of Community Organization. A detailed district wise PO, COs and coverage are shown in Annex-VI.

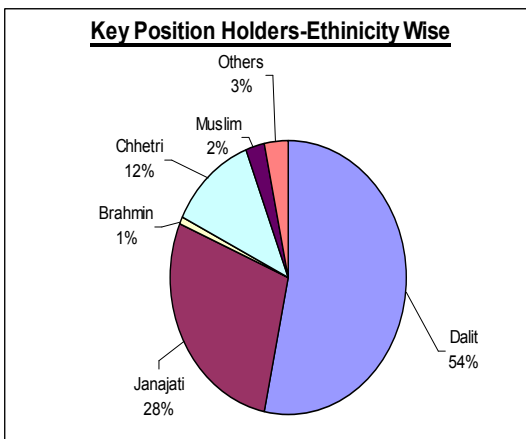
Reach out to Excluded Poor Community Beneficiaries

PAF has taken the strategy to support the idea that poor community should be organized themselves to prepare, implement and manage their program and they should be in the driving seat, with decision making authorities. A social inclusion strategy to reach out to the poor specifically poor women, dalit and janjati are taken (Annex-VII). Participatory community well-being ranking process identified the poor community members as primary beneficiaries at the settlement level. They are organized into community organization to plan, implement and manage the sub-projects.

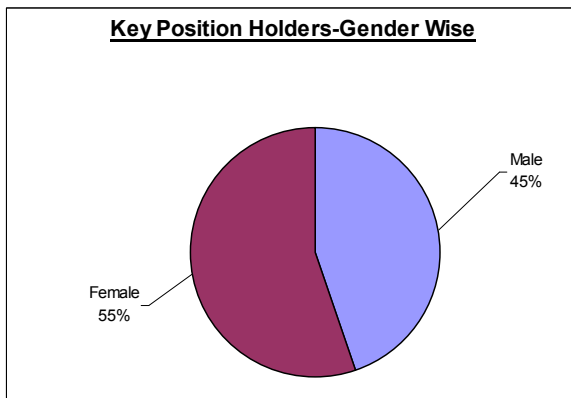
Among beneficiaries members in Community Organizations (COs), 69.1% members falls under hardcore poor category (food sufficiency less than 3 months among criteria fix by community), 22.7% members falls under medium poor category (food sufficiency more than 3 months but less than 6 months among criteria set by the community), 7.8% members falls under poor category (food sufficiency more than 6 months but less than a year among criteria set by the community) and 0.4% members falls under marginal Non-poor Category.



Likewise, CO member households constitutes 44% dalit, 30% janajati, and 26% other ethnicity (3% Brahman, 16% Chettri, 2% muslim and 5% other ethnicity). Gender wise, 66% are female members in Community Organizations (COs).



Similarly, the key position holders in the community organisation such as President, Treasurer, Secretary constitutes, 54% dalit, 28% janajati, and 18% other ethnicity (13% Brahman/Chettri, 2% muslim and 3% other ethnicity). Gender wise, 55% are female key position holders in Community Organizations (COs).



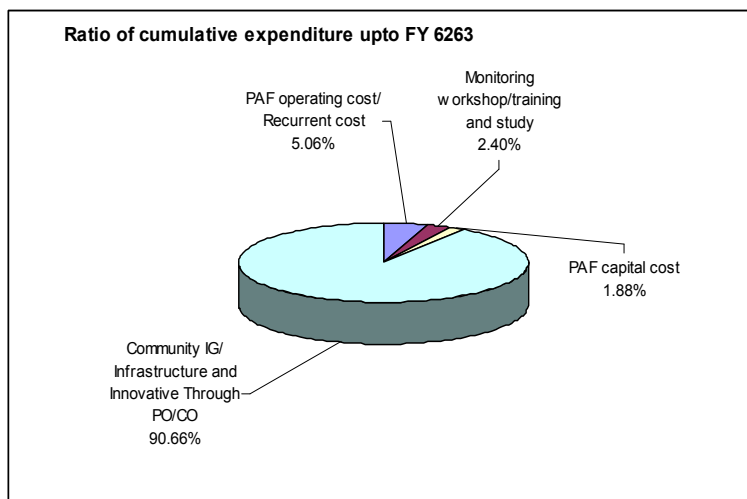
Budget Expenditure

The total expenditure in FY 2060/61, FY 2061/62 and FY 2062/63 was NRs.5,781,379, NRs. 247,322,606 and NRs. 493,505,927 respectively.

Out of the total PAF expenditure of NRs. 74,66,09,912 till FY 2062/63, 90.66% was in Program Implementation through CO & PO (CO 78.22% and PO 12.44%), 2.40 % in Monitoring, Training, Studies and Other Support, 1.88 % in capital investment for PAF, 5.06 % in PAF operation/ recurrent cost. Of the total expenditure 87% was from the World Bank IDA Grant and rest 13% from GoN source.

In this FY 2063/64, the expenditure till date is NRs 682,775,010.29 which is 54.44% of total budget of NRs 1,254,070,000.00. Total expenditure of PAF till date is NRs. 1,429,384,922.

Currently the PAF Project is funded by IDA Grant with US\$ 40.0 M for four years till January 2009 (This constitutes initial US\$ 15.0 M and additional US\$ 25.0 M).



Lessons and Challenges

There is a high demand for the programme as the sub-projects originate at grass-root levels. Communities have demonstrated their keen interest to undertake the programme and make necessary contributions. The current challenge is to make a trade-off between rapid implementation and institution building enhancing the technical capability of the community organizations. In view of the wide varieties of activities undertaken within the sub-project, the challenges faced for sustainability of the sub-projects are:

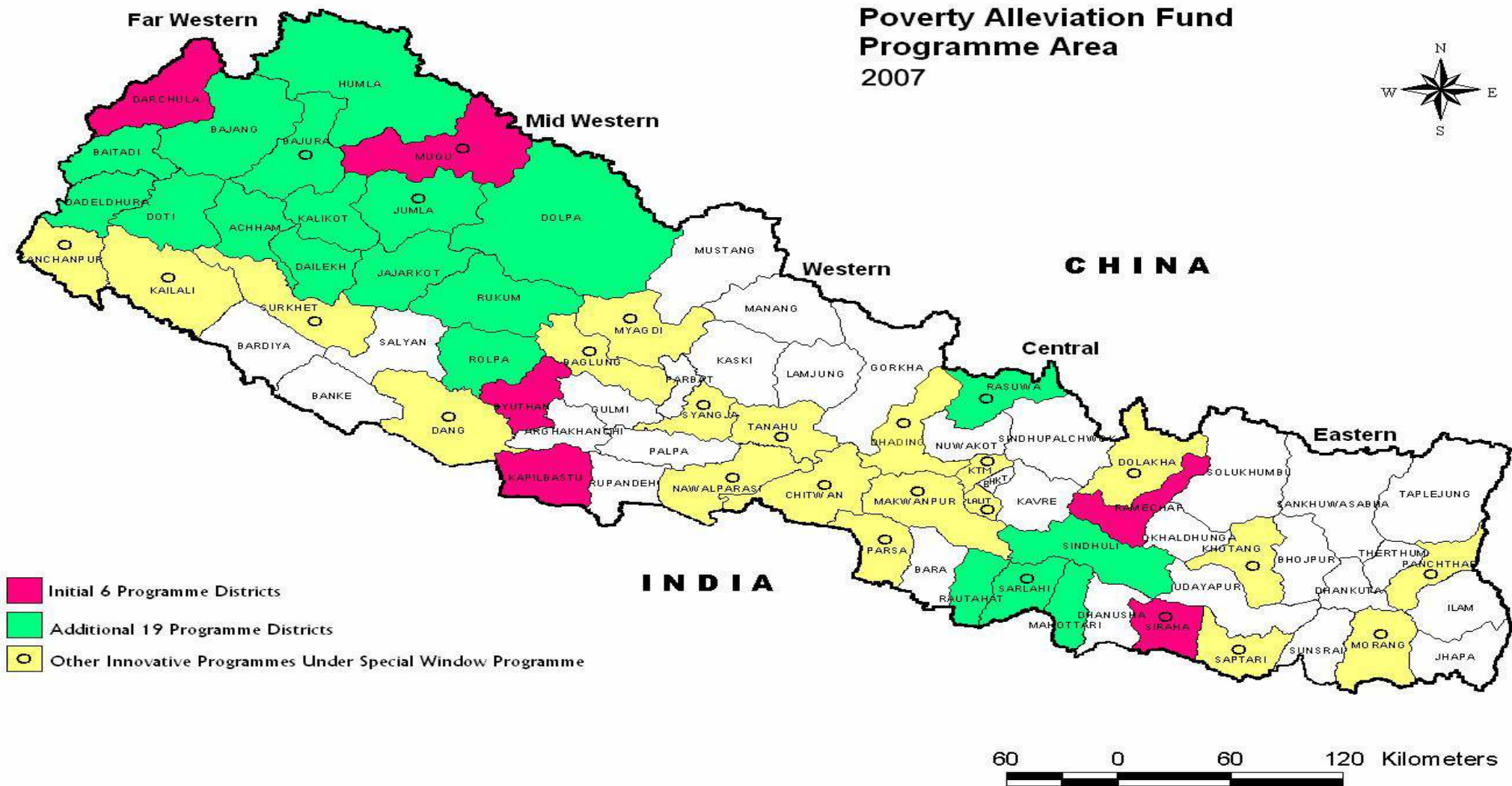
- Linkage with market for sustaining income-generating activities.
- Providing appropriate technology support for different activities including linkages with existing service structure
- Availing Insurance Safety-Net particularly for livestock
- Exploring an alternative to livestock based activities for landless poor
- Building Community Capacity to Manage Revolving Fund

It is inevitable to work with diversified groups of poor communities supporting each other and network for linkages and collaboration with other programmes and line agencies to support communities in different areas of strength of these programmes. Further, legal institutionalization of Community Organizations and establishment of strong linkages with VDC/ DDC are also important for sustainability and long-term support to these community groups.

Monitoring, Research and Development needs to be strengthened to support the implementation including capacity building of main actors i.e. CO, PO, Local Bodies and PAF.

PAF should work on its exit strategy focusing on its strategic thrust to enable community to go to sustained path to get out of poverty within a stipulated time.

Annex I: PAF Programme Districts



Annex II: Sub Project Activities

INCOME GENERATION ACTIVITIES

Agriculture Related

Agro Forestry
Apple Farming
Asparagus Farming
Badam Cultivation
Banana Farming
Bee Keeping
Cereal Crops Farming
Fertilizer Production
Fishery
Fruits Farming
Ginger Cultivation
Green House
Herbs Farming
Lokta Farming
Maize Cultivation
Milk Chilling Center
Mushroom Farming
Nursery
Off Season Veg. Farming
Seeds Business
Sugarcane Cultivation
Vegetable Farming

Livestock Related

Agri Tools
Animal Insurance
Animal Treatment Fund
Badel Raising
Bag
Bread Udyog
Buffalo Raising
Candle Udhyog
Carpentary
Carpentary Instruments
Carpet
Chiura Udyog
Cloth Udhyog
Cottage Industry
Cow Raising
Dairy Firm
Dalmoth Udhyog
Dhaka Bunai
Doko Namlo Rope
Duck Raising
Essence
Farma
Fiber Material Making
Fruit Purify Center
Garment
Goat Raising
He Buffalo Raising
Horse Raising
Improved Stove Making
Juice Production
Madal Making

Manufacturing/ Cottage Industries

Metal Products Production
Muda
Muel Raising
Nanglo
Nepali Paper Udhyog
Noodles Industry
Ox Raising
Pig Raising
Pigeon Keeping
Pikkle Udhyog
Potato Chips
Pottery (Manufacture)
Poultry
Rabbit Keeping
Radipakhi Bunai
Rope Making
Sheep Raising
Shoe Making
Soap Industry
Sweater Udyog
Sweet Shop
Tapari
Titaura
Tyle Industry
Umbrella Udyog
Yak Raising

Service Sector

Band Baaja
Bus Truck Maintenance
Cart Service
Communication Service
Computer Maintenance Center
Cycle Maintenance
Dhalan Pharma
Goods Transportation
House Wiring
Laundry
Loud Speaker
Mechanical Workshop
Mill (Kutani Pisani)
Motercycle Maintainance
Painting
PCO
Photo Studio
Plumber Instruments
Radio TV Maintenance
Resturant
Rikshwa
Rikshwa Maintainance
Saloon
Screen Print
Sewing Machine
Solar Repairing & Maintenance Shop
Tailoring
Tea Shop
Tent House
Thela Gada
Transportation Service
Tripal
Vehical Maintenance
Washing Machine
Welding Shop

Trading

Aggregate
Agricultural Input Business
Agrovet
Animal Business
Bamboo Business
Bhujiya Shop
Book Shop
Cloth Business
Cooperative Shop
Dry Fish Business
Egg Business
Electric Shop
Fancy Shop
Fish Business
Fruits And Vegetable Shop
Fruits Shop
Furniture Business
General Stores
Gold & Silver Shop
Herbs Business
Ice Crea, Kulfi, Chaat
Jewelry Shop
Kawadi Business
Kerosene Shop
Manihara Business
Masala Udyog
Masson Instruments
Meat Shop
Medicine Shop
Metal Business
Milk Business
Paan Shop
Pottery Shop
Purse, Belt Shop
Retail Business
Rice Business
Shoe Shop
Stamp Making Shop
Stationary
Thela Business
Utensial Shop
Vegetable Shop
Vetnary Shop
Watch Shop
Wood Business

INFRASTRUCTURE ACTIVITIES

Infrastructure

Boring Pump
Bridge Construction
Canal
Culvert
Dam
Deep Boring
Dhaki Okhal
Dhikki Pump
Electricity
Ghatta
Hand Pump
Hume Pipe
Irrigation
Micro Hydro
Micro Irrigation
Plastic Pond

Pond
Pond Maintenance
Pump Set
Rice Mill
River Training Work
Road
Road Maintenance
Solar System
Suspension Bridge
Water Harvest Tank
Water Pump
Well
Wire Bridge
Wooden Bridge

Social Environmental Infrastructure

Building Construction
Building Maintenance
Drain
Dumping Site
Health Post
Improved Stove
School Boundary Wall
School Building/Room
School Maintenance
Toilet
Tube Well
Water Supply And Sanitation
Water Supply Maintenance

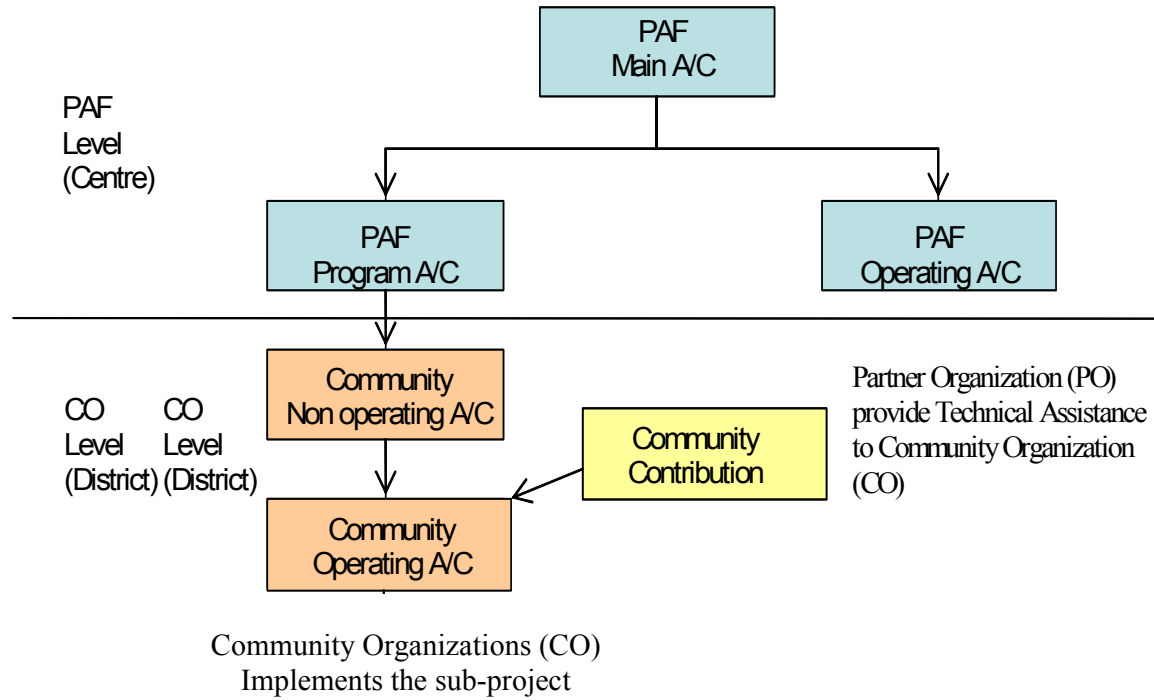
Social and Environmental Basic Service

Birth Certificate and Citizenship Regd.
First Aid Instruments
Health And Sanitation
School Furniture

INNOVATIVE ACTIVITIES

- Water supply cum Micro-irrigation and integrated agriculture in hills
- Improved Wire Bridge (Tar Pool)
- Support poor for inclusion in micro-hydro project through IG
- Support community effort to complete irrigation project for vegetable farming
- Micro-financing and subsidy scheme for Arsenic Filters to the community
- Pigeon keeping
- Fish cultivation in lake and rice fields
- Rice intensification
- Cardamom cultivation in community forest
- Briquette Production
- Integrated Approach in agro based IG
- Orange and Coffee production and marketing management
- Healthy women for sustainable development
- Introducing Wi-Fi Technology in rural areas
- Evaporative cooling technology for food preservation
- Use of local resources for sustainable self independence

Annex III: Funds Flow Modality



Annex IV: CO registration, agreement for sub-project and disbursement status

District	CO Registered w/ PAF (No.)	Agreement			Disbursement			
		CO No.	Agreement No.	Amount (NRs.)	Non Operating		Operating	
					Agreement No.	Amount (NRs.)	Agreement No.	Amount (NRs.)
Initial 6 Districts								
Darchula	277	248	261	80,547,145.83	253	73,948,049.00	244	58,484,551.50
Kapilbastu	443	429	430	229,353,467.52	751	210,390,830.52	743	155,467,286.88
Mugu	113	111	127	41,996,954.00	138	41,063,767.00	129	33,150,302.50
Pyuthan	114	114	114	34,911,866.92	118	33,80,516.92	102	20,755,012.81
Ramechhap	251	248	252	75,906,963.29	248	66,031,210.29	245	51,782,458.30
Siraha	440	405	408	165,640,197.19	593	158,658,820.19	547	113,304,919.13
Sub Total	1,638	1,555	1,592	628,356,594.75	2101	593,946,193.92	2010	432,944,531.12
19 Additional Districts								
Achham	187	165	177	57,510,676.00	125	37,832,241.00	40	6,868,649.80
Baitadi	160	69	69	32,847,600.00	32	14,798,149.00	11	3,019,950.00
Bajhang	48	48	55	17,413,773.35	55	17,413,773.35	48	6,432,783.00
Bajura	134	96	117	58,080,772.84	6	2,142,425.00	6	1,713,940.00
Dadeldhura	136	135	135	47,675,725.00	134	47,373,615.00	0	0
Dailekh	107	107	107	38,792,470.00	22	6,227,420.00	22	6,227,420.00
Dolpa	67	50	50	25,326,178.00	14	5,239,122.00	14	3,143,473.00
Doti	181	151	152	63,648,602.00	133	54,937,962.00	16	4,550,721.60
Humla	99	99	116	39,220,358.00	116	39,350,865.00	108	22,077,525.80
Jajarkot	181	114	114	60,897,293.15	100	53,099,725.65	96	39,581,869.25
Jumla	35	32	32	26,704,264.00	12	7,021,215.00	7	2,507,774.00
Kalikot	48							
Mahottari	240	219	219	77,724,499.00	144	50,132,121.00	45	8,739,918.00
Rasuwa	184	141	148	53,140,845.47	52	20,330,525.53	36	9,354,300.00
Rautahat	258	258	258	133,468,041.75	123	55,161,357.50	90	25,845,562.70
Rolpa	7	7	7	2,763,900.00				
Rukum	51	49	50	19,164,929.00	13	5,203,395.00	11	2,647,557.00
Sarlahi	58	58	58	19,209,516.00	28	10,632,130.00	28	9,028,892.00
Sindhuli	177	177	177	68,782,937.50	85	35,034,561.00	75	21,803,885.10
Sub Total	2,358	1,975	2,041	842,372,381.06	1194	461,930,603.03	653	173,544,221.25
Innovative Programme Districts								
Baglung	1	1	1	722,165.00	1	722,165.00	1	361,000.00
Chitawan	12	8	8	2,464,420.00	12	3,782,420.00	12	2,347,000.00
Dhading	30	29	29	9,590,375.00	29	9,590,375.00	29	5,754,225.00
Jumla	37	37	37	24,126,786.00	37	24,126,786.00	23	9,272,978.00
Kanchanpur	78	76	76	24,573,692.00	50	17,101,352.00	47	15,133,302.00
Makwanpur	24	12	12	2,867,816.52	12	2,867,816.52	12	2,867,816.52
Morang	46	46	46	20,874,621.87	46	20,874,621.87	46	17,596,484.04
Nawalparasi	1	1	1	1,551,248.00	1	1,551,248.00	1	1,551,248.00
Rasuwa	1	1	1	1,807,406.11	1	1,807,406.11	1	1,807,406.11
Sarlahi	27	27	27	7,812,750.00	27	7,812,750.00	27	5,398,200.00
Surkhet	1	1	1	3,015,982.00	1	3,015,982.00	1	2,020,708.00
Sub Total	258	239	239	99,407,262.50	217	93,252,922.50	200	64,110,367.67
Total =	4,254	3,769	3,872	1,570,136,238.31	3512	1,139,129,719.45	2863	670,599,120.04

Annex V: Completed Activities

District	Activity Group	Activity	No
Darchula	Agriculture & Others	Herbal Nursery	199
		Vegetable Farming	143
		Total of Agriculture &	342
	Animal Husbandary	Cow Raising	103
		Goat Raising	298
		Yak Raising	9
		Total of Animal	410
	Capacity Building	Aamchi Training	1
		Account And Store Mgt	2
		Account Keeping Training	10
		Animal Husbandary Training	0
		Capacity Building Training	11
		First Aid Training	9
		Forest Management Taining	2
		Goat Raising Training	1
		Herbal Nursery Management	4
		Improved Stove Training	2
		Leadership Training	2
		Pasture Land Mgt. Training	4
		Vegetable Farming Training	7
		Wood Craft Training	1
		Total of Capacity Building	56
	Infrastructure-IG	Ghatta	1
		Irrigation	2
		Total of Infrastructure-IG	3
	Infrastructure-Social	Toilet	86
		Water Supply And Sanation	6
		Water Supply/Drinking Water	1
		Total of Infrastructure-	93
		Manufacturing & Others	Carpentary
		Carpet	46
	Total of Manufacturing &	46	
Social Service	Improved Stove	42	
	School Furniture	290	
	Total of Social Service	332	

Kapilbastu	Agriculture & Others	Bee Keeping	1
		Boring Pump	11
		Cereal Crops Farming	9
		Dhikki Pump	339
		Fishery	11,209
		Fruits Farming	
		Off Season Veg. Farming	11,725.00
		Vegetable Farming	451
		Total of Agriculture &	12,020

Kapilbastu	Animal Husbandary	Badel Raising	
		Buffalo Raising	580
		Cow Raising	7
		Duck Raising	72
		Goat Raising	2,108
		Ox Raising	4
		Pig Raising	415
		Poultry	3,932
		Sheep Raising	19
		Total of Animal	7,137
	Capacity Building	Agrovet Training	5
		Animal And Market Dev	1
		Animal Husbandary Training	17
		Bee Keeping Training	1
		Buffalo Raising Training	32
		Capacity Building Training	4
		Carpentary Training	1
		Cemented Ring Making	1
		Child Development	3
		Child Literacy Class	11
		Commuity Awareness Training	1
		Computer Training	13
		Driving Training	2
		Electronics Training	3
		Fish Business Training	2
		Fishery Training	5
		Goat Raising Training	32
		House Wiring Training	4
		Literacy Class	25
		Market Management Training	1
		Masson Training	4
		Mechanical Training	1
		Painting Training	2
		Pig Raising Training	15
		Poultry Training	13
		Radio TV Maintenance Training	1
		Tailoring Training	13
		Tapari Training	1
		Vegetable Farming Training	86
		Vetnery Training	9
		Total of Capacity Building	309
	Infrastructure-IG	Culvert	9
		Deep Boaring	9
		Ghatta	1
		Road	6
		Road And Culvert	1
		Total of Infrastructure-IG	26

Kapilbastu	<u>Infrastructure-Social</u>	Dumping Site	56
		Hand Pump	251
		Hume Pipe	2
		Road And Well	1
		School Maintenance	1
		Toilet	443
		Total of Infrastructure-	754
	<u>Manufacturing & Others</u>		
		Activity	No
		Agri Tools	1
		Bag	1
		Carpentary Instruments	1
		Furniture Business	8
		Metal Products Production	2
		Tapari	12
		Total of Manufacturing &	25
	<u>Service Sector</u>	Agrovet	3
		Bicycle And Motorcycle	3
		Cart Service	21
		Cycle Maintenance	16
		Dhalan Pharma	2
		Hotel	1
		Laundry	1
		Loud Speaker	1
		Masson Instruments	1
		Photo Studio	1
		Plumber Instruments	1
		Radio TV Maintenance	4
		Rikshwa	45
		Saloon	5
		Tailoring	23
		Tea Shop	2
		Vehical Maintenance	1
		Washing Machine	1
		Welding Shop	1
		Total of Service Sector	133
	<u>Social Service</u>	Improved Stove	59
		School Furniture	1
		Total of Social Service	60

Kapilbastu	Trading	Agricultural Input Business	12
		Animal Business	7
		Cloth Business	1
		Electric Shop	1
		Fancy Shop	3
		Fish Business	3
		Fruits And Vegetable Shop	1
		Fruits Shop	1
		Galla	13
		Kawadi Business	1
		Manihara Business	4
		Retail Business	239
		Shoe Shop	1
		Tobacco Business	1
		Vegetable Shop	3
		Total of Trading	291
Makwanpur	Infrastructure-IG	Irrigation	5
		Total of Infrastructure-IG	5
	Infrastructure-Social	Water Supply And Sanation	7
		Total of Infrastructure-	7
Morang	Agriculture & Others	Agro Forestry	2
		Bee Keeping	1
		Boring Pump	1
		Fertilizer Production	10
		Spray Machine	3
		Vegetable Farming	312
		Total of Agriculture &	329
	Animal Husbandary	Animal Treatment Fund	1
		Buffalo Raising	42
		Cow Raising	198
		Fooder Management	5
		Goat Raising	893
		Goat Shade	24
		Ox Raising	273
		Pig Raising	550
		Pig Shade	23
		Poultry	479
		Total of Animal	2,488
	Capacity Building	Agro Forestry Training	6
		Animal Health Training	9
		Animal Husbandary Training	14
		Awareness Training	5
		Capacity Building Training	65
		Electronics Training	10
		Fertilizer Prodn Training	11
		Literacy Class	2
		Metal Work Training	1
		Sewing Cutting Training	1
		Skill Development Training	9
		Study Tour	1
		Vegetable Farming Training	3

Kapilbastu		Total of Capacity Building	137
	Infrastructure-IG	Deep Boaring	1
		Duck, Pegion, Chicken	16
		Motor	1
		Pump Set	2
		Total of Infrastructure-IG	20
	Infrastructure-Social	Building Construction	6
		Drain	3
		School Building/Room	20
		Toilet	154
		Tube Well	72
		Total of Infrastructure-	255
	Manufacturing & Others	Dalthoth Udhoyag	4
		Total of Manufacturing &	4
	Service Sector	Cycle Maintenance	1
		Help To Disable People	4
		Hotel	3
		Motercycle Maintainance	6
		Radio TV Maintenance	5
		Rikshwa	28
		Rikshwa Maintainance	2
		Saloon	1
		Sewing Machine	5
		Sheltering Business	1
		Tailoring	2
		Tea Shop	2
		Total of Service Sector	60
	Social Service	Improved Stove	6
		School Furniture	40
		Total of Social Service	46
		Trading	
		Activity	No
		Animal Business	1
		Bamboo Business	10
		Cloth Business	1
		Manihara Business	6
		Meat Shop	2
		Medicine Shop	7
		Metal Business	1
		Milk Business	1
		Paan Shop	2
		Retail Business	63
		Vegetable Shop	16
		Total of Trading	110

Mugu	Agriculture & Others	Badam Cultivation	1
		Bee Keeping	11
		Dhaki Okhal	19
		Green House	9
		Vegetable Farming	99
		Total of Agriculture &	139

Mugu	Animal Husbandary	Buffalo Raising	73
		Goat Raising	2,409
		Goat Shade	19
		Poultry	2,010
		Sheep Raising	40
		Yak Raising	60
		Total of Animal	4,611
	Capacity Building	Account Keeping Training	1
		Animal Husbandary Training	6
		Animal Raising Training	6
		Bee Keeping Training	1
		Buffalo Raising Training	7
		Capacity Building Training	72
		Goat Raising Training	17
		Micro Enterprise Training	13
		Plumber Training	3
		Poultry Training	4
		Pump Operation Training	1
		Repair And Maintenance	1
		Retail Business Training	1
		Vegetable Farming Training	9
		Total of Capacity Building	142
	Infrastructure-IG	Ghatta	1
		Irrigation	664
		Road	1
		Water Harvest Tank	7
		Wooden Bridge	2
		Total of Infrastructure-IG	675
	Infrastructure-Social	Electricity	1
		Micro Hydro	3
		School Building/Room	1
		Water Supply And Mico	1
		Water Supply And Sanation	2
		Water Supply/Drinking Water	6
		Total of Infrastructure-	14
	Manufacturing & Others	Carpet	11
		Furniture Business	1
		Potato Chips	1
		Total of Manufacturing &	13
	Service Sector	Agrovet	1
		Tailoring	15
		Total of Service Sector	16
	Social Service	Improved Stove	133
		Total of Social Service	133
	Trading	Metal Business	1
		Micro Enterprise	4
		Retail Business	11
		Total of Trading	16
Nawalparasi	Infrastructure-Social	Wire Bridge	1
		Total of Infrastructure-	1

Ramechhap	Agriculture & Others	Bee Keeping	8
		Juice Production	1
		Nursery	1
		Vegetable Farming	48
		Total of Agriculture &	58
	Animal Husbandary	Animal Insurance	3
		Buffalo Raising	54
		Fooder Management	24
		Goat Raising	651
		Pig Raising	130
		Poultry	1,068
		Total of Animal	1,930
	Capacity Building	Animal Husbandary Training	16
		Capacity Building Training	9
		Total of Capacity Building	25
	Infrastructure-IG	Pond	1
		Total of Infrastructure-IG	1
	Infrastructure-Social	Building Construction	5
		Toilet	101
		Total of Infrastructure-	106
	Manufacturing & Others	Dalthoth Udhoyag	7
		Fiber Material Making	5
		Furniture Business	2
		Metal Products Production	1
		Total of Manufacturing &	15
	Service Sector	Hotel	2
		Photo Studio	1
		Radio TV Maintenance	1
		Tailoring	6
		Total of Service Sector	10
	Trading	Animal Business	3
		Cloth Business	2
		Electric Shop	1
		Metal Business	2
		Retail Business	37
		Wood Business	1
		Total of Trading	46
Rasuwa	Infrastructure-IG	Irrigation	1
		Total of Infrastructure-IG	1

Siraha	Agriculture & Others		
		Asparagus Farming	12
		Boring Pump	14
		Dhikki Pump	52
		Fishery	1
		Fruits Farming	3
		Herbs Farming	2
		Tree Contract	1
		Vegetable Farming	205
		Total of Agriculture &	290
	Animal Husbandary	Animal Insurance	1
		Animal Treatment Fund	18
		Buffalo Raising	754
		Cow Raising	478
		Goat Raising	3,682
		He Bufallo Raising	14
		Ox Raising	195
		Pasture Land	3
		Pasture Land Support	1
		Pig Raising	371
		Pigeon Keeping	60
		Poultry	2,325
		Total of Animal	7,902
	Capacity Building	Account And Store Mgt	28
		Account Keeping Training	2
		Agro Forestry Training	2
		Animal And Market Dev	3
		Animal Health Training	7
		Animal Husbandary Training	56
		Animal Raising Training	1
		Asparagus Managemet	2
		Asparagus Marketing Training	2
		Buffalo Raising Training	2
		Capacity Building Training	18
		Child Literacy Class	33
		CO Management Training	34
		Commuity Awareness Training	3
		Cycle Maintenance Training	1
		Driving Training	2
		Fertilizer Prodn Training	8
		Gender Equality & Dev. Trg	47
		Goat Raising Training	26
		Group Mgmt. And Leadership	55
		Health And Sanitation	17
		JTA Training	120
		Leadership Training	7
		Literacy Class	52
		Market Management Training	7
		Nanglo Making Training	1
		Nursery Management	8
		Off Season Veg Farming	8
		Organisation Management	5

Siraha	Pasture Land Mgt. Training	5
	Pig Raising Training	3
	Plantation Training	1
	Retail Business Training	2
	Rikshwa Maintenance	1
	Saving & Credit Mgmt. Trg.	75
	Skill Development Training	1
	Study Tour	10
	Tapari Training	1
	Vegetable Farming Training	24
	Vegetable Storage Training	4
	Vetnery Training	1
	Women Health Training	2
	Women Skill Development	1
	Total of Capacity Building	688
	Infrastructure-IG	
	Culvert	1
	Infrastructure Design-IG	3
	Irrigation	1
	Rice Mill	2
	Road	4
	Water Pump	4
	Well	2
	Total of Infrastructure-IG	17
	Infrastructure-Social	
	Electricity	1
	Hand Pump	33
	Infrastructure Design-Social	14
	Road Estimate Cost	6
	School Building/Room	1
	Toilet	1
	Tube Well	11
	Total of Infrastructure-	67
	Manufacturing & Others	
	Doko Namlo Rope	5
	Furniture Business	7
	Metal Products Production	2
	Muda	1
	Nanglo	2
	Sweet Shop	1
	Tapari	4
	Titaura	1
	Total of Manufacturing &	23
	Service Sector	
	Band Baaja	1
	Bicycle And Motorcycle	6
	Bus Truck Maintenance	1
	Cart Service	4
	Cycle Maintenance	8
	Hotel	4
	Plumber Instruments	5
	Radio TV Maintenance	1
	Rikshwa	221
	Rikshwa Maintainance	1
	Saloon	1

Siraha		Screen Print	1
		Sewing Machine	10
		Sheltering Business	1
		Tailoring	29
		Tea Shop	2
		Total of Service Sector	296
	Social Service	Birth Certificate And	2
		Health And Sanitation	43
		Revolving Fund	6
		Scholarship	5
		Total of Social Service	56
	Trading	Aggregate	13
		Agricultural Input Business	1
		Animal Business	152
		Bamboo Business	3
		Cloth Business	2
		Egg Business	100
		Fancy Shop	3
		Fish Business	3
		Fruits And Vegetable Shop	5
		Fruits Shop	1
		Herbs Business	1
		Jewelry Shop	10
		Manihara Business	5
		Masala Udyog	1
		Meat Shop	1
		Medicine Shop	2
		Micro Enterprise	16
		Paan Shop	1
		Retail Business	577
		Rice Business	27
		Shoe Shop	1
		Thela Business	2
		Tobacco Business	1
		Vegetable Shop	10
		Wood Business	3
		Total of Trading	941

Annex-VI: POs, COs and Coverage

District	No. of Working POs	Total VDC + Municipality in District	PO Facilitating/ Community Planning No. of VDC	CO Implementing VDC	Sub Proj. No.		Beneficiary	
					IG	Infra	CO Member	Total Beneficiary
Initial 6 Districts								
Darchula	14	41	41	40	178	91	5,532	8,235
Kapilbastu	11	78	47	47	427	374	12,133	21,529
Mugu	6	21	19	19	87	56	3,507	5,008
Pyuthan	12	49	36	25	114	9	3,317	3,323
Ramechhap	11	55	43	36	249	38	6,584	6,650
Siraha	20	108	57	46	402	224	10,441	11,714
Sub Total =	74	352	243	213	1,457	792	41,514	56,459
19 Additional Districts								
Achham	7	75	27	27	168	9	4,882	4,776
Baitadi	7	63	30	26	68		2,531	2,390
Bajhang	3	47	18	11	34	21	1,162	2,150
Bajura	4	27	20	20	95	22	3,134	4,705
Dadeldhura	8	21	16	16	135		3,743	3,725
Dailekh	5	56	10	10	107		3,705	3,705
Dolpa	3	19	12	8	50		1,565	1,566
Doti	5	51	21	21	151	1	4,816	4,857
Humla	5	27	17	10	98	18	2,310	2,774
Jajarkot	8	30	26	26	114		4,113	4,172
Jumla	7	30	21	11	32	18	1,170	1,165
Kalikot	5	30	18	8				
Mahottari	12	77	23	22	218		5,592	5,348
Rasuwa	7	18	14	14	140	8	3,868	3,983
Rautahat	9	97	27	24	258		7,382	7,376
Rolpa	1	51	4	1	7		210	210
Rukum	4	43	12	5	50		1,364	1,401
Sarlahi	15	100	35	27	58		1,717	1,625
Sindhuli	9	54	24	19	172	5	5,744	5,801
Sub Total =	124	916	375	306	1,955	102	59,008	61,729
Innovative Programme Districts								
Baglung		60		1		1	13	142
Nawalparasi		74		1		1	11	705
Rasuwa		18		1		1	11	384
Surkhet		48		1		1	9	655
Chitawan	1	38	5	4	8		196	196
Dhading	1	50	5	5	29		835	784
Jumla	1	30	5	2	37	33	1,344	1,344
Kanchanpur	1	20	20	8	76		1,808	1,871
Lalitpur	1	42	1					
Makwanpur	2	44	17	7		12	146	329
Morang	3	65	3	3	46	45	1,610	1,618
Sarlahi	1	100	5	5	27		665	734
Siraha	1	108	2					
Sub Total =	12	697	63	38	185	94	6,648	8,762
NDM	12		22					
Total =	222	1,965	703	557	3,597	988	107,170	126,950

Annex VII: Social Inclusion Strategy Reaching the Poor

<u>Targeting Sequence</u>	<u>Key Actor</u>	<u>Tools/Methods</u>
Districts ↓	PAF Management	Development Indicators (CBS)
VDCs ↓	Service Agency Portfolio Manager	VDC Prioritization District-Level Stakeholders' Consultation
Wards ↓	Partner Organization (PO)	VDC-Level Interaction
Settlements ↓	Partner Organization (PO)	Ward-Level Interaction Settlement-Level Sensitization Settlement Social Mapping Social Assessment/ Wellbeing Ranking
Community Organizations ↓	Community Org. (CO)	Identification of Target Households Formation of COs Registration of COs
Target Beneficiaries	Community Org. (CO)	Project Development Community Action Plan