

Poverty Alleviation Fund (PAF) Program Implementation Status (as of October 17, 2006)

Poverty Alleviation Fund (PAF) is implementing targeted demand-driven community based program directly supporting the third pillar of Tenth Plan/ Poverty Reduction Strategy Paper-PRSP of the Government of Nepal (GoN), i.e. targeted program. Presently PAF is implementing its program in 44 districts. Initially it selected six districts viz. Darchula, Mugu, Pyuthan, Kapilbastu, Ramechhap and Siraha for programme implementation. From the FY 2062/63 (2005/06 AD), 19 additional districts are selected as PAF special programme districts (Achham, Baitadi, Bajhang, Bajura, Dadeldhura, Dailekh, Dolpa, Doti, Humla, Jajarkot, Jumla, Kalikot, Mahottari, Rasuwa, Rautahat, Rolpa, Rukum, Sarlahi and Sindhuli). With this, PAF now covers all the 25 districts from Group-C categorized as most deprived districts by CBS/NPC based on 28 poverty related social-economic indicators. Besides working in these project districts, PAF is implementing innovative programme in other 19 districts as well under the special innovative window programme to capture replicable innovative initiatives to reach to the poor. The current PAF program districts are shown in *Annex-I*.

Demand-Driven Community Proposals and Direct Funding

Till date 2,417 community organizations (COs) are registered in PAF (1,307 in Initial 6 Districts, 927 in Additional 19 Districts and rest 183 are through Innovative Window Programme Districts). Accordingly, community proposals are also prepared with participatory planning process. Community Proposals for implementation began to receive from April 2005. Out of total registrations, PAF made agreement with 1,812 COs (1,140 are in Initial 6 Districts, 492 in Additional 19 Districts and rest 180 in Innovative Window Programme Districts) and community are implementing the sub-project (Table-1). Based on community demand, several different activities related to Income Generation and Infrastructure sub-projects are proposed and included in the program implementation. Income generation activities are related to agriculture, livestock, cottage industries, trade and services. Similarly, infrastructure are related to micro-irrigation, link road, culvert/bridges, micro-hydro, water supply, sanitation, school and health post buildings. Program activities, in general, being implemented by the community are listed in *Annex-II*. Further proposals receiving form COs are also continuing.

Table 1: CO registration, agreement for sub-project and disbursement status

District	CO Registered w/ PAF (No.)	Agreement Made (No.)			Disbursement			
		CO No	Sub Proj No.	Amount (NRs.)	Non Operating		Operating	
					Sub Proj No.	Amount (NRs.)	Sub Proj No.	Amount (NRs.)
Initial 6 Districts								
Darchula	206	177	186	57,934,361.83	184	57,596,621.00	156	36,655,854.00
Kapilbastu	394	380	381	213,323,587.51	367	196,875,008.52	324	118,793,830.38
Mugu	110	105	121	39,879,326.00	111	38,720,034.00	99	25,645,384.50
Pyuthan	59	31	31	9,731,341.41	23	7,803,613.41	16	3,215,001.50
Ramechhap	103	98	98	29,550,204.72	98	29,570,204.72	98	25,071,783.47
Siraha	435	349	351	145,281,029.29	347	143,745,122.29	332	110,150,664.73
Sub Total	1,307	1,140	1,168	495,699,850.76	1,130.00	474,310,603.94	1,025.00	319,532,518.58
Additional 19 Districts								
Achham	37	37	37	8,839,636.00	35	8,461,316.00	-	-
Baitadi	160	2	2	870,911.00	2	767,700.00	-	-
Bajhang	45	45	50	16,138,303.00	45	16,138,303.00	38	5,806,025.00
Bajura	13	7	7	2,505,645.00	6	2,142,425.00	6	1,713,940.00
Dailekh	23	22	22	6,227,420.00	22	6,227,420.00	21	2,977,227.50

District	CO Registered w/ PAF (No.)	Agreement Made (No.)			Disbursement			
		CO No	Sub Proj No.	Amount (NRs.)	Non Operating		Operating	
					Sub Proj No.	Amount (NRs.)	Sub Proj No.	Amount (NRs.)
Dolpa	14	14	14	5,239,122.00	14	5,239,122.00	11	2,510,353.00
Doti	31	17	17	6,019,942.00	17	6,019,942.00	6	1,129,207.20
Humla	89	52	69	18,813,072.00	52	18,943,579.00	-	-
Jajarkot	104	89	89	45,766,666.45	89	45,766,665.65	44	21,010,000.05
Jumla	16	13	13	7,912,465.00	12	7,021,215.00	4	1,505,474.00
Mahottari	115	25	25	7,070,352.00	9	3,142,272.00	9	1,628,231.00
Rasuwa	127	50	57	21,994,153.97				
Rautahat	98	66	66	32,126,715.00	-	-	-	-
Rukum	15	13	13	5,203,395.00	-	-	-	-
Sarlahi	28	28	28	10,632,130.00	28	10,632,130.00	28	8,206,257.00
Sindhuli	12	12	12	6,205,647.00	12	6,205,647.00	7	2,851,182.60
Sub Total	927	492	521	201,565,575.42	343.00	136,707,736.65	174.00	49,337,897.35
Innovative Window Programme Districts								14
Baglung	1	1	1	722,165.00	1	722,165.00	1	361,000.00
Dhading	15	14	14	4,251,930.00	14	4,251,930.00	14	2,551,158.00
Jumla	37	37	37	24,126,786.00	37	24,126,786.00	20	7,694,060.00
Kanchanpur	40	40	40	13,425,112.00	40	13,425,112.00	39	12,274,562.00
Makwanpur	14	12	12	2,867,816.52	12	2,867,816.52	12	2,560,590.12
Morang	46	46	46	20,874,621.87	46	20,874,621.87	46	17,596,484.04
Nawalparasi	1	1	1	1,551,248.00	1	1,551,248.00	1	1,551,248.00
Rasuwa	1	1	1	1,807,406.11	1	1,807,406.11	1	438,295.36
Sarlahi	27	27	27	7,812,750.00	27	7,812,750.00	12	2,162,250.00
Surkhet	1	1	1	3,015,982.00	1	3,015,982.00	1	2,020,708.00
Sub Total	183	180	180	80,455,817.50	180.00	80,455,817.50	147.00	49,210,355.52
Total =	2,417	1,812	1,869	777,721,243.68	1,653.00	691,474,158.09	1,346.00	418,080,771.45

The agreement made with 1,812 COs amounts to NRs. 777,721,243.68 and it is in the process of disbursement to Community Accounts. Till date NRs.691,474,158.09 is disbursed to community non-operating account and NRs 41,80,80,571.45 is disbursed to community operating account. The community fund flow modality is shown in Annex-III.

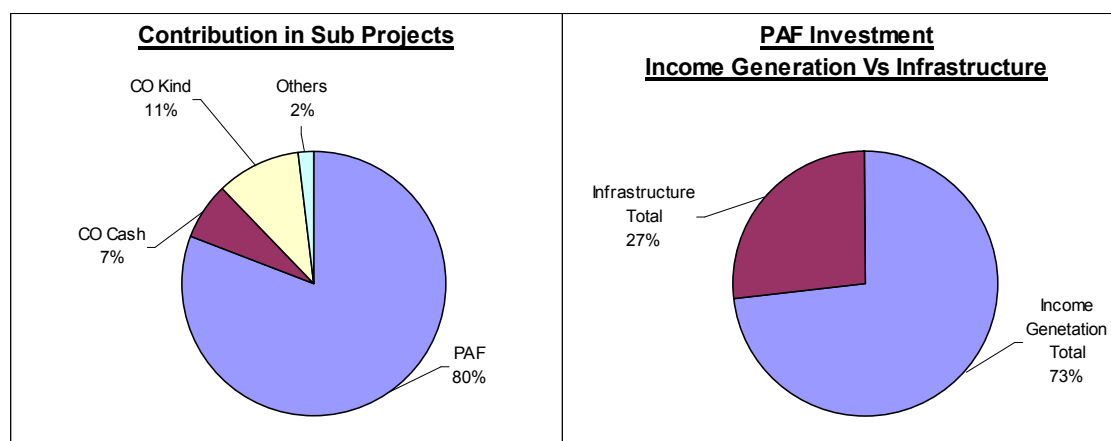
In Fy 2061/62, the agreements were made with 595 COs amounting to NRs. 24,01,97,944 and out of this NRs. 19,96,52,928 was disbursed to community non-operating account and NRs. 6,40,98,744 is disbursed to community operating account. In the FY 2062/63, the agreement was made with 1070 additional COs amounting to NRs 526,156,592 out of which NRs. 383,883,292 was disbursed to community non-operating account of which NRs. 226,342,822 was disbursed to community operating account. In this FY 2063/64, till date the agreement is made with 147 additional COs amounting to 64,797,802.38 of which NRs. 10,7473,744.69 was disbursed to community Non Operating Account and NRs. 12,76,39,004.22 was disbursed to operating account of COs.

The community sub projects are in different stages of implementation. Second level of demand and proposals are also started receiving upon completion of first sub projects. A list of completed sub projects are listed in Annex-IV.

Additionally, PAF considered financing 12 out of 20 winning innovative proposals of Nepal Development Market Place (NDM)-World Bank. Agreements are made with those 12 POs that amounts NRs. 14,758,416 to work in 22 VDC of Bajura, Chitwan, Dolakha, Kailali, Kanchanpur, Kathmandu, Myagdi, Morang, Panchthar, Parsa, Saptari, and Syangja districts serving about 8,634 poor households. Till date, NRs. 12,887,114 is disbursed and implementation is in different stages.

Furhter PAF is monitoring the World Bank financed NDM projects in Dang, Khotang and Tanahun districts.

Community Cost Sharing



PAF is investing 80% of the total sub-project cost. Community sharing is 18% (11% in Kind and 7% in Cash) of the total sub-project costs whereas other organizations are sharing 2% in total sub-project cost. In infrastructure subprojects, community cost sharing is 27% in kind and in income generating sub projects, community cost sharing is 13% (10% in cash and 3% in Kind).

Out of the total PAF investment, 72% is in Income Generating sub-projects and 28% is in Infrastructure sub-projects. The sub-project activities undertaken are shown in Annex-II.

Partner Organization Supporting Community

The objectives of PAF to select Partner Organizations (POs) are to facilitate Community Organisations (COs). The facilitation shall be in organising COs, their capacity development, planning activities, carryout detailed survey design & estimates, proposal submission, as well as technical assistance and monitoring during implementation. As such, 219 Partner Organizations (POs) are working with communities (73 for Initial 6 Districts, 123 for Additional 19 Districts, 11 for Innovative Window program and 12 for Innovative NDM-World Bank Programme). Till date POs facilitated in total 447 VDCs (188 in Initial 6 Districts, 203 in Additional 19 Districts, 34 in Innovative Window Programme Districts and 22 in NDM-World Bank Programmes) and Community Organizations (COs) are working in those VDCs. Till date 75,940 poor households in those VDCs are served (Table-2).

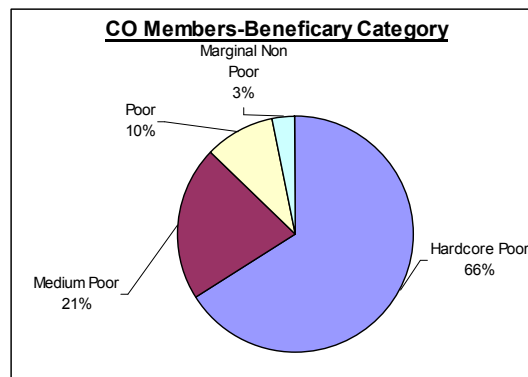
Table 2: POs, COs and Coverage

District	No. of Working Pos	Total VDC + Municipality in District	PO Committed and Working VDC	CO Working VDC	Sub Proj. No.	Present Beneficiary HH
Initial 6 Districts						
Darchula	14	41	41	40	186	6,517
Kapilbastu	11	78	47	46	381	19,221
Mugu	6	21	19	19	121	4,696
Pyuthan	9	49	30	17	31	1,025
Ramechhap	13	55	42	19	98	2,680
Siraha	20	108	57	47	351	10,399
Sub Total =	73		236	188	1,168	44,538
Additional 19 Districts						

District	No. of Working Pos	Total VDC + Municipality in District	PO Committed and Working VDC	CO Working VDC	Sub Proj. No.	Present Beneficiary HH
Achham	7	75	27	17	37	756
Baitadi	7	63	30	26	2	36
Bajhang	3	47	18	11	50	1,930
Bajura	4	27	20	9	7	201
Dadeldhura	8	21	16			
Dailekh	5	56	10	10	22	639
Dolpa	3	19	9	8	14	353
Doti	5	51	21	17	17	478
Humla	5	27	14	10	69	1,639
Jajarkot	8	30	23	26	89	3,209
Jumla	6	30	14	7	13	517
Kalikot	5	30	2			
Mahottari	12	77	23	19	25	597
Rasuwa	7	18	14	11	57	1,629
Rautahat	9	97	27	11	66	1,820
Rolpa	1	51	4			
Rukum	4	43	12	2	13	418
Sarlahi	15	100	35	13	28	854
Sindhuli	9	54	24	6	12	464
Sub Total =	123		343	203	521	15540
Innovative						
Baglung				1	1	142
Chitawan	1		5			
Dhading	1		5	5	14	364
Jumla	1		5	2	37	1,344
Kanchanpur	1		20	8	40	953
Lalitpur	1		1			
Makwanpur	1		10	7	12	329
Morang	3		3	3	46	1,618
Nawalparasi				1	1	705
Rasuwa				1	1	384
Sarlahi	1		5	5	27	734
Siraha	1		2			
Surkhet				1	1	655
Sub Total =	11		56	34	180	7228
NDM-WB	12		22	22		8634
Total =	219		657	447	1,869	75940

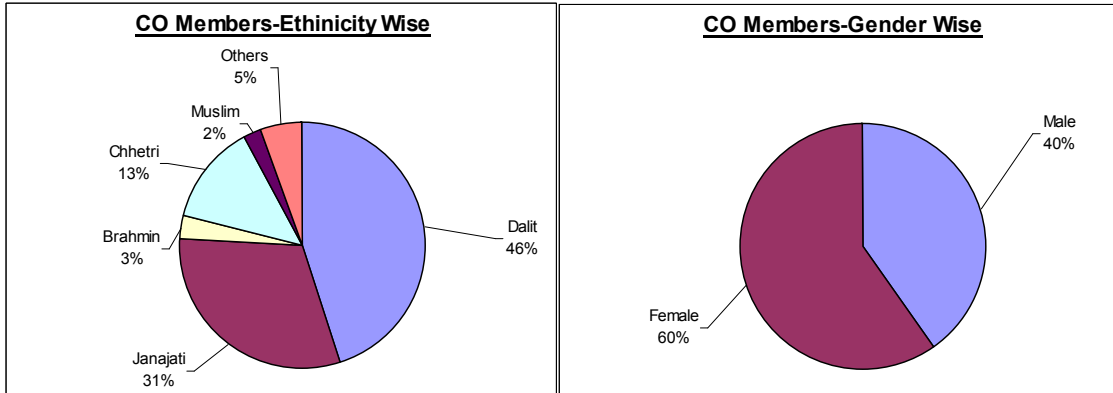
Reach out to Excluded Poor Community Beneficiaries

PAF has taken the strategy to support the idea that poor community should be organized themselves to prepare, implement and manage their program and they should be in the driving seat, with decision making authorities. A social inclusion strategy to reach out to the poor specifically poor women, dalit and janjati are taken (Annex-V). Participatory community well-being ranking process identified the poor community members as primary beneficiaries at the settlement level. They

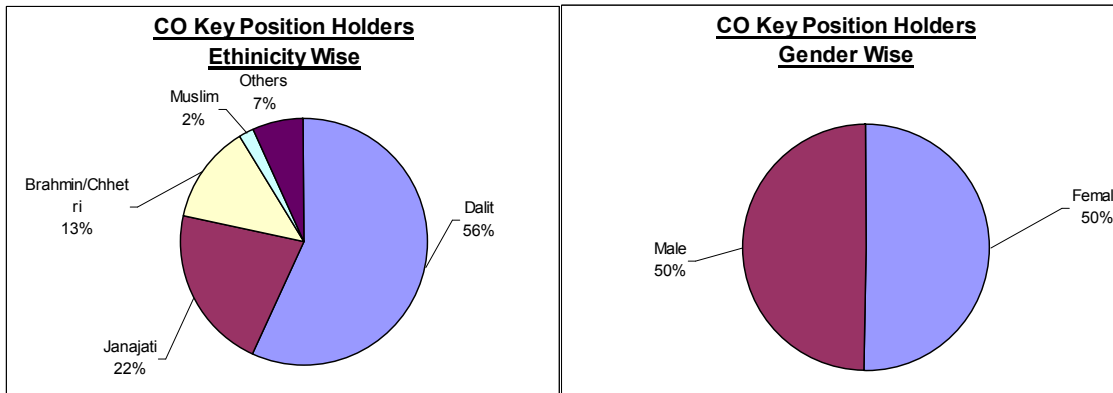


are organized into community organization to plan, implement and manage the sub-projects.

Among beneficiaries members in Community Organizations (COs), 66% members falls under hardcore poor category (food sufficiency less than 3 months among criteria fix by community), 21% members falls under medium poor category (food sufficiency more than 3 months but less than 6 months among criteria set by the community), 10% members falls under poor category (food sufficiency more than 6 months but less than a year among criteria set by the community) and 3% members falls under marginal Non-poor Category.



Likewise, CO member households constitutes 46% dalit, 31% janajati, and 23% other ethnicity (3% Brahman, 13% Chhetri, 2% muslim and 5% other ethnicity). Gender wise, 60% are female members in Community Organizations (COs).

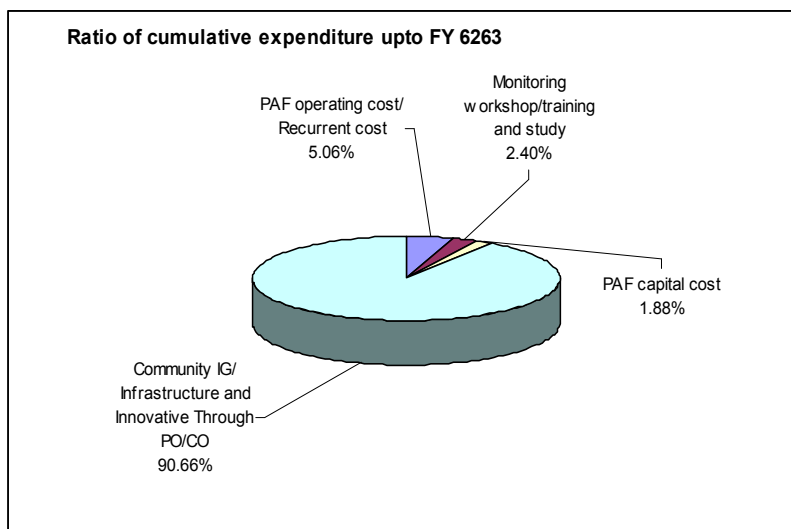


Similarly, the key position holders in the community organisation such as President, Treasurer, Secretary constitutes, 56% dalit, 22% janajati, and 23% other ethnicity (13% Brahman/Chhetri, 2% muslim and 7% other ethnicity). Gender wise, 50% are female key position holders in Community Organizations (COs).

Budget Expenditure

The total expenditure in FY 2060/61, FY 2061/62 and FY 2062/63 was NRs.5,781,379, NRs. 247,322,606 and NRs. 493,505,927 respectively.

Out of the total PAF expenditure of NRs. 74,66,09,912 till FY 2062/63, 90.66% was in Program Implementation through CO & PO (CO 78.22% and PO 12.44%), 2.40 % in Monitoring, Training, Studies and Other Support, 1.88 % in capital investment for



PAF, 5.06 % in PAF operation/ recurrent cost. Of the total expenditure 87% was from the World Bank IDA Grant and rest 13% from GoN source.

In this FY 2063/64, the expenditure till date is NRs 15,11,49,543 which is 12.05% of total budget of NRs 1,25,40,70,000.

Currently the PAF Project is funded by IDA Grant with US\$ 15.0 M for four years till January 2009. Recently, the Government of Nepal (GoN) has negotiated with the World Bank for additional funds to the PAF project of IDA Grant US\$ 25 Million.

Lessons and Challenges

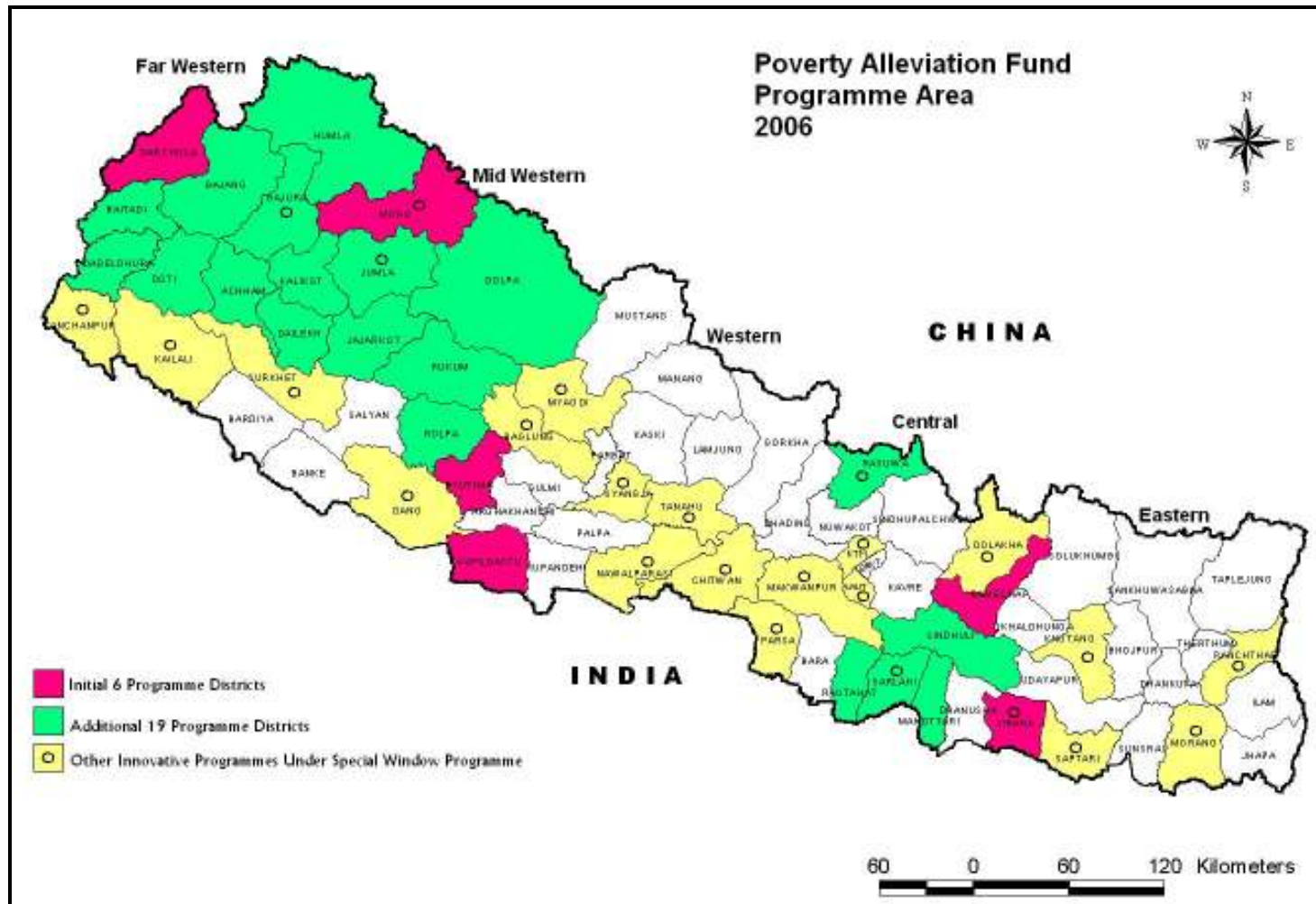
There is a high demand for the programme as the sub-projects originate at grass-root levels. Communities have demonstrated their keen interest to undertake the programme and make necessary contributions. The current challenge is to make a trade-off between rapid implementation and institution building enhancing the technical capability of the community organizations. In view of the wide varieties of activities undertaken within the sub-project, the challenges faced for sustainability of the sub-projects are:

- Linkage with market for sustaining income-generating activities.
- Providing appropriate technology support for different activities including linkages with existing service structure
- Availing Insurance Safety-Net particularly for livestock
- Exploring an alternative to livestock based activities for landless poor
- Building Community Capacity to Manage Revolving Fund

It is inevitable to work with diversified groups of poor communities supporting each other and network for linkages and collaboration with other programmes and line agencies to support communities in different areas of strength of these programmes. Further, legal institutionalization of Community Organizations and establishment of strong linkages with VDC/ DDC are also important for sustainability and long-term support to these community groups.

Monitoring, Research and Development needs to be strengthened to support the implementation including capacity building of main actors i.e. CO, PO, Local Bodies and PAF.

Annex I: PAF Programme Districts



Annex II: Sub Project Activities

INCOME GENERATION ACTIVITIES

Agriculture Related

Agro Forestry
Apple Farming
Asparagus Farming
Badam Cultivation
Banana Farming
Bee Keeping
Cereal Crops Farming
Fertilizer Production
Fishery
Fruits Farming
Ginger Cultivation
Herbs Farming
Lokta Farming
Maize Cultivation
Milk Chilling Center
Mushroom Farming
Nursery
Off Season Veg. Farming
Seeds Business
Sugarcane Cultivation
Vegetable Farming

Livestock Related

Agri Tools
Animal Insurance
Animal Treatment Fund
Badel Raising
Bag
Bread Udyog
Buffalo Raising
Candle Udyog
Carpentary
Carpentary Instruments
Carpet
Chiura Udyog
Cloth Udyog
Cottage Industry
Cow Raising
Dairy Firm
Dalmoth Udhyog
Dhaka Bunai
Doko Namlo Rope
Duck Raising
Essence
Farma
Fiber Material Making
Fruit Purify Center
Garment
Goat Raising
He Bufallo Raising
Horse Raising
Improved Stove Making
Juice Production
Madal Making

Manufacturing/ Cottage Industries

Metal Products Production
Muda

Muel Raising
Nanglo
Nepali Paper Udyog
Noodles Industry
Ox Raising
Pig Raising
Pigeon Keeping
Pikkle Udyog
Potato Chips
Pottery (Manufacture)
Poultry
Rabbit Keeping
Radipakhi Bunai
Rope Making
Sheep Raising
Shoe Making
Soap Industry
Sweater Udyog
Sweet Shop
Tapari
Titaura
Tyle Industry
Umbrella Udyog
Yak Raising

Service Sector

Band Baaja
Bus Truck Maintenance
Cart Service
Communication Service
Computer Maintenance Center
Cycle Maintenance
Dhalan Pharma
Goods Transportation
House Wiring
Laundry
Loud Speaker
Mechanical Workshop
Mill (Kutani Pisani)
Motercycle Maintainance
Painting
PCO
Photo Studio
Plumber Instruments
Radio TV Maintenance
Resturant
Rikshwa
Rikshwa Maintainance
Saloon
Screen Print
Sewing Machine
Solar Repairing & Maintenance Shop
Tailoring
Tea Shop
Tent House
Thela Gada
Transportation Service
Tripal
Vehical Maintenance
Washing Machine

Welding Shop

Trading

Aggregate
Agricultural Input Business
Agrovet
Animal Business
Bamboo Business
Bhujija Shop
Book Shop
Cloth Business
Cooperative Shop
Dry Fish Business
Egg Business
Electric Shop
Fancy Shop
Fish Business
Fruits And Vegetable Shop
Fruits Shop
Furniture Business
General Stores
Gold & Silver Shop
Herbs Business
Ice Crea, Kulfi, Chaat
Jewelry Shop
Kawadi Business
Kerosene Shop
Manihara Business
Masala Udyog
Masson Instruments
Meat Shop
Medicine Shop
Metal Business
Milk Business
Paan Shop
Pottery Shop
Purse, Belt Shop
Retail Business
Rice Business
Shoe Shop
Stamp Making Shop
Stationary
Thela Business
Utensial Shop
Vegetable Shop
Vetnary Shop
Watch Shop
Wood Business

INFRASTRUCTURE ACTIVITIES

Infrastructure

Boring Pump
Bridge Construction
Canal
Culvert
Dam
Deep Boring
Dhaki Okhal
Dhikki Pump
Electricity
Ghatta
Hand Pump
Hume Pipe
Irrigation
Micro Hydro

Micro Irrigation
Plastic Pond
Pond
Pond Maintenance
Pump Set
Rice Mill
River Training Work
Road
Road Maintenance
Solar System
Suspension Bridge
Water Harvest Tank
Water Pump
Well
Wire Bridge
Wooden Bridge

Social Environmental Infrastructure

Building Construction
Building Maintenance
Drain
Dumping Site
Health Post
Improved Stove
School Boundary Wall
School Building/Room
School Maintenance
Toilet
Tube Well
Water Supply And Sanitation
Water Supply Maintenance

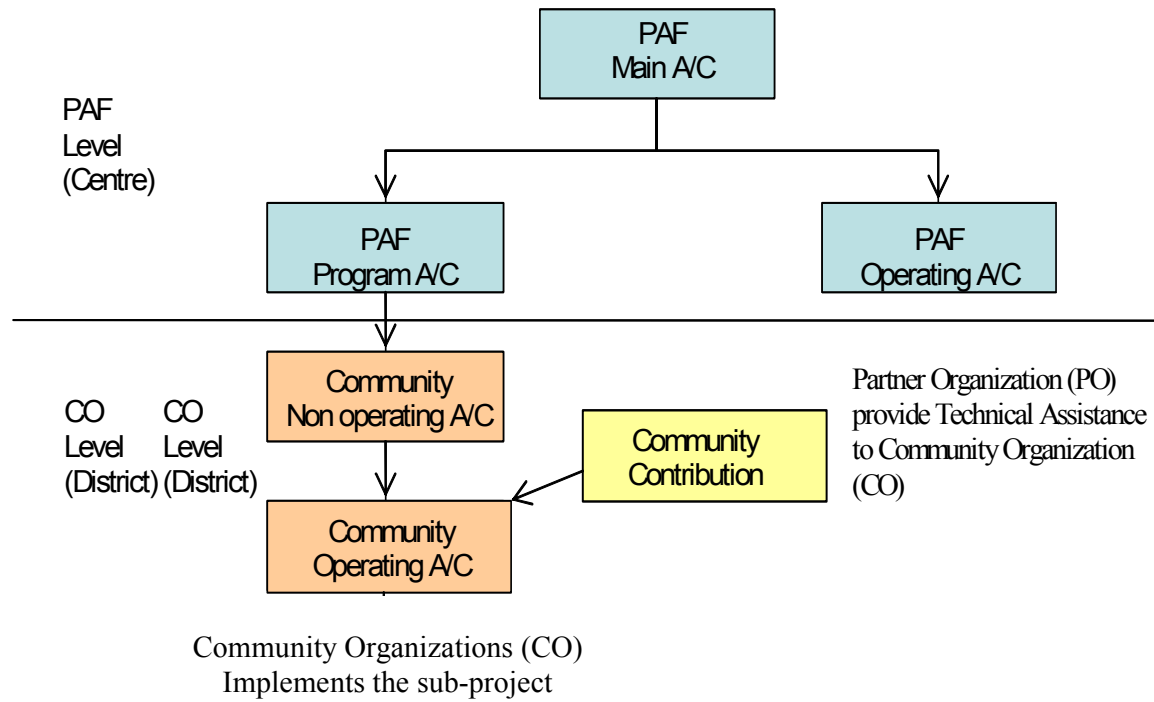
Social and Environmental Basic Service

Birth Certificate and Citizenship Regd.
First Aid Instruments
Health And Sanitation
School Furniture

INNOVATIVE ACTIVITIES

- Water supply cum Micro-irrigation and integrated agriculture in hills
- Improved Wire Bridge (Tar Pool)
- Support poor for inclusion in micro-hydro project through IG
- Support community effort to complete irrigation project for vegetable farming
- Micro-financing and subsidy scheme for Arsenic Filters to the community
- Pigeon keeping
- Fish cultivation in lake and rice fields
- Rice intensification
- Cardamom cultivation in community forest
- Briquette Production
- Integrated Approach in agro based IG
- Orange and Coffee production and marketing management
- Healthy women for sustainable development
- Introducing Wi-Fi Technology in rural areas
- Evaporative cooling technology for food preservation
- Use of local resources for sustainable self independence

Annex III: Funds Flow Modality



Annex IV: Completed Sub Projects

District	Activity Group	Activity	No
Darchula	Agriculture Related	Vegetable Farming	1
	Livestock Related	Cow Raising	8
		Goat Raising	6
		Yak Raising	10
	Manufacturing/Cottage Industries	Carpet	3
	Social and Environmental Basic Services	Health And Sanitation	1
		School Furniture	2
	Infrastructure	Irrigation	1
	Social and Environmental Infrastructure	Micro Irrigation	2
		School Maintenance	1
		Toilet	4
		Water Supply And Sanitation	3
		Improved Stove	3
Sub Total			45
Kapilbastu	Agriculture Related	Dhikki Pump	13
		Fishery	1
		Vegetable Farming	15
	Livestock Related	Buffalo Raising	18
		Duck Raising	1
		Goat Raising	21
		Pig Raising	11
		Poultry	8
		Sheep Raising	2
	Manufacturing/Cottage Industries	Agri Tools	2
		Dalmoth Udhoyag	1
	Service Sector	Cart Service	1
		Cycle Maintenance	1
		Laundry	1
		Plumber Instruments	1
		Radio TV Maintenance	1
		Rikshwa	2
		Tailoring	5
	Trading	Agricultural Input Business	3
		Furniture Business	1
		Retail Business	16
		Shoe Shop	1
	Infrastructure	Culvert	2
		Road	1
	Social and Environmental Infrastructure	Hand Pump	15
		Hume Pipe	1
		Toilet	10
Sub Total			155
Mugu	Agriculture Related	Bee Keeping	2
		Dhaki Okhal	2
		Vegetable Farming	9
	Livestock Related	Goat Raising	25
		Goat Shade	1
		Poultry	11

		Sheep Raising	1
	Manufacturing/Cottage Industries	Carpet	1
	Infrastructure	Ghatta	1
		Road	1
		Water Harvest Tank	3
		Wooden Bridge	2
	Social and Environmental Infrastructure	Water Supply And Sanitation	1
		Water Supply/Drinking Water	2
		Improved Stove	5
	Social and Environmental Basic Services	School Furniture	1
	Sub Total		68
Ramechhap	Agriculture Related	Bee Keeping	3
		Fruits Farming	1
		Vegetable Farming	5
	Livestock Related	Buffalo Raising	10
		Goat Raising	24
		Pig Raising	16
		Poultry	5
	Service Sector	Tailoring	6
		Tea Shop	2
	Trading	Animal Business	1
		Retail Business	10
		Furniture Business	1
	Infrastructure	Pond	2
	Social and Environmental Infrastructure	Toilet	7
	Sub Total		93
Siraha	Agriculture Related	Asparagus Farming	3
		Herbs Farming	2
		Tree Contract	1
		Vegetable Farming	21
	Livestock Related	Animal Treatment Fund	5
		Buffalo Raising	62
		Cow Raising	60
		Goat Raising	72
		He Buffalo Raising	2
		Ox Raising	20
		Pig Raising	28
		Pigeon Keeping	1
		Poultry	9
	Manufacturing/Cottage Industries	Doko Namlo Rope	2
		Muda	1
		Nanglo	1
		Tapari	2
		Titaura	1
	Service Sector	Bicycle And Motorcycle Maintenance	3
		Bus Truck Maintenance	1
		Cart Service	1
		Cycle Maintenance	1
		Hotel	1
		Radio TV Maintenance	1
		Rikshwa	29

		Rikshwa Maintainance	1
		Saloon	1
		Screen Print	1
		Sewing Machine	4
		Sheltering Business	1
		Tailoring	6
		Tea Shop	2
	Social and Environmental Basic Services	Birth Certificate And Citizenship Regd.	1
		Health And Sanitation	1
	Trading	Aggregate	3
		Animal Business	19
		Bamboo Business	1
		Egg Business	1
		Fancy Shop	3
		Fruits And Vegetable Shop	2
		Fruits Shop	1
		Furniture Business	5
		Herbs Business	1
		Jewellery Shop	4
		Retail Business	62
		Rice Business	1
		Sweet Shop	1
		Thela Business	1
		Vegetable Shop	3
		Wood Business	2
	Infrastructure	Culvert	1
		Dam	1
		Irrigation	1
		Road	4
		Boring Pump	3
		Dhikki Pump	7
		Water Pump	3
		Electricity	1
	Social and Environmental Infrastructure	Building Maintenance	3
		School Building/Room	1
		Toilet	2
		Tube Well	4
		Water Supply/Drinking Water	5
	Sub Total		494
	Total		855

Annex V: Social Inclusion Strategy

PAF's Social Inclusion Framework for Reaching the Target Beneficiaries

<u>Targeting Sequence</u>	<u>Key Actor</u>	<u>Tools/Methods</u>
Districts	PAF Management	Development Indicators
↓		
VDCs	Service Agency Portfolio Manager	VDC Prioritization District-Level Stakeholders' Consultation
↓		
Wards	Partner Organization	VDC-Level Interaction
↓		
Settlements	Partner Organization	Ward-Level Interaction Settlement-Level Sensitization Social Mapping Social Assessment
↓		
Community Organizations	CO	Identification of Target Households Formation of COs Registration of COs
↓		
Target Beneficiaries	CO	Project Development Community Action Plan Project Implementation